



# Lumabuilt

## PRODUCT DATA SHEET

### ACM A2000 4MM FRAME

### WET SEAL SYSTEM

Visage  
Aluminum Composite Material

#### Product Name

A2000 4MM Frame Wet Seal System

#### Manufacturer

Lumabuilt  
Lumabuilt.com

#### Product Description

A2000 4MM Wet Seal System is fully integrated and tested. It can use Visage ACM sheets or one of our manufacturing partners' ACM sheets. It is also available for field fabrication.

Finishes: Solid, Mica Pearlescent and Woodgrain Available

#### Installation

Our A2000 Wet Seal System is an alternative to the rainscreen system and requires backer rods and approved caulk sealant to obtain a sealed joint cladding system to resist all air and water infiltration. Visage ACM is easy to install and requires no special tools with the exception of standard installation tools. Visage panels will arrive with the Frame and Stiffener Extrusions pre-mounted (if required), and each panel will have an angle brace mounted on the backside corners to strengthen the assembly. Sill, Wall Clip, and Modified Extrusions should have been pre-ordered and shipped with panel assemblies.

#### Technical Data

- Fully ICC certified (ESR-5448)
- Product Testing: Fire and Physical Performance NFPA 285, ASTM D-1929, ASTM E-8, ASTM E-84, ASTM D-635, ASTM D-1781, ASTM C-297
- Product Testing: Air, Water and Structure ASTM E-283-04, ASTM E-331-00, ASTM E-330-02

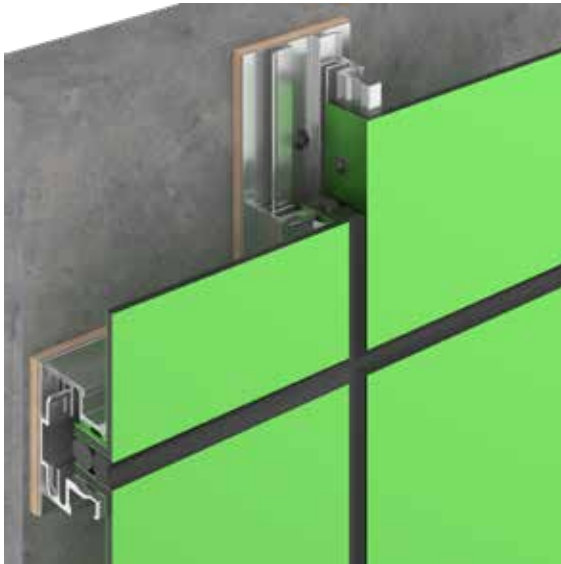
#### Warranty

PPG Paint Finish 20 Year Warranty / Panel 10 Year Warranty

#### Maintenance

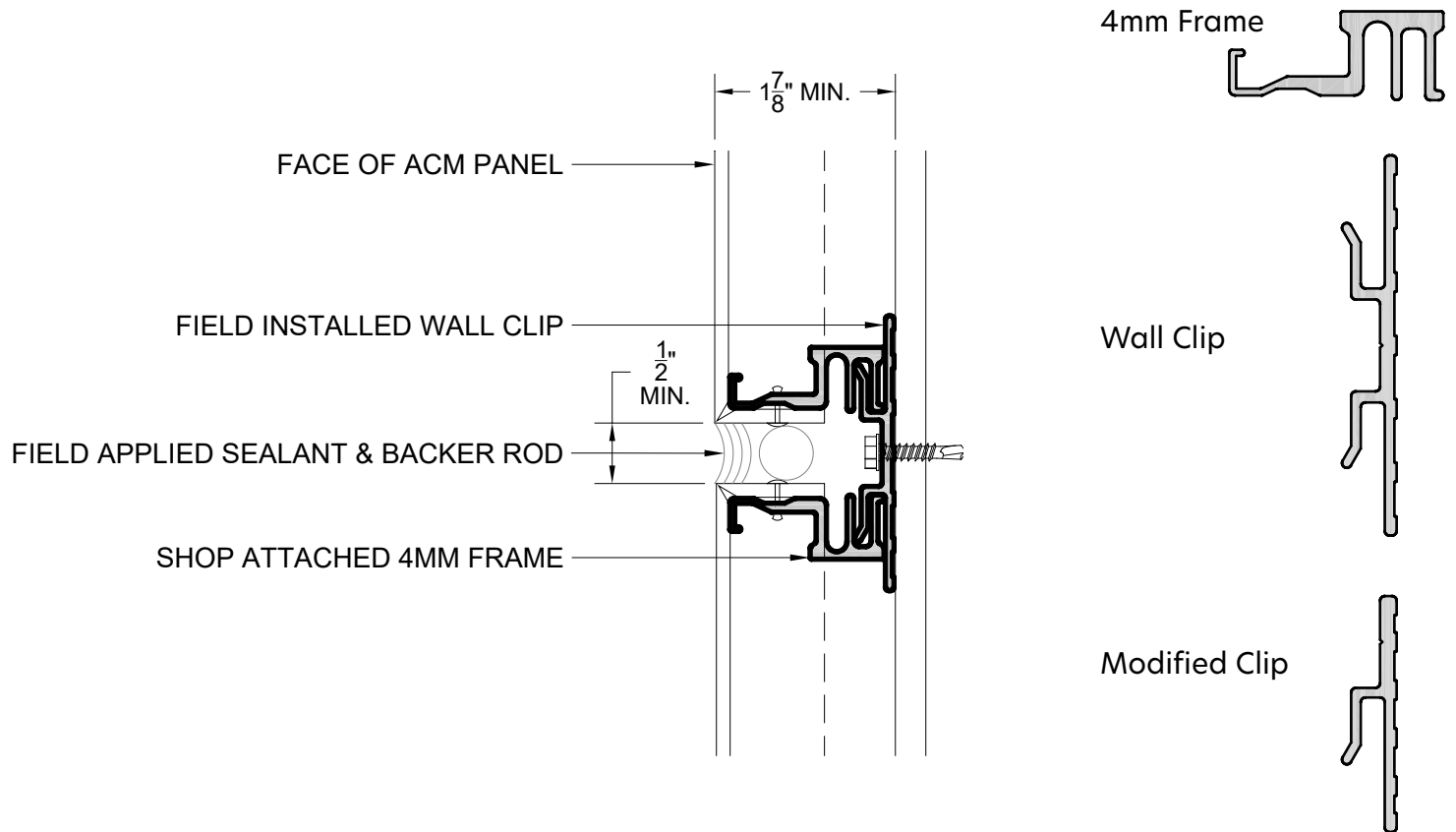
Lumabuilt's Visage aluminum composite panels come with organic coatings designed for premium aesthetic appearance and minimum maintenance. We do recommend cleaning the painted surface to maintain the best appearance. Visage warranties require the purchaser to implement a regular cleaning schedule in order to preserve the appearance of the product. Refer to cleaning instructions for full details.





### Product Information

- Architectural Rainscreen Panel for interior or exterior applications
- FR (Fire Resistant mineral core) is standard
- Available in 4mm and 6mm thickness also available in Copper, Stainless Steel and Zinc
- 0.5mm (0.0197") face and backer sheet standard in A3000 (series alloy)
- Finishes: Pro finish 500 (PPG Industries Duranar) Standard, Mica and Metallic with clear coat
- Maximum fabricated panel is 60" x 194"
- Matching flat sheets available in 36" x 120" x 0.032, 0.040, & 0.050 Aluminum (min order qty 85 sheets/color-gauge)



For additional information on Visage please visit us online at [Lumabuilt.com](http://Lumabuilt.com)



Approved Continuing Education

