



# Lumabuilt

## PRODUCT DATA SHEET VENTED PLANK

**Mosaic**  
Planks and Battens

### Product Name

Mosaic Vented Plank

### Manufacturer

Lumabuilt  
Lumabuilt.com

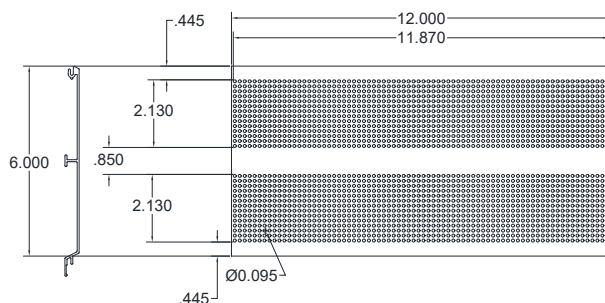
### Product Description

Mosaic works beautifully on exteriors as well as interiors and has a wide variety of profiles for use for cladding, soffits, enclosure screens, ceilings, walls, partitions, and a variety of custom solutions. The design capabilities are endless with the versatility of Mosaic. The product is lightweight, durable and our licensed proprietary sublimation process will make its low maintenance beauty last for years.

Finishes: Woodgrains, solid colors and specialty finishes available.

### Installation

Mosaic is installed utilizing a stainless-steel floating panel clip. This allows for panel movement during thermal changes. Applied over open framing or solid substrate. All materials may require a fresh square cut due to the manufacturing process. Refer to installation instructions for full details.



### Technical Data

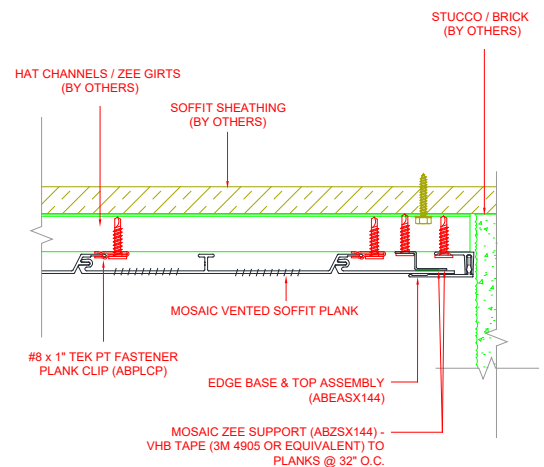
- System testing with CA & PA stamps: ASTM E2768/ E84, ASTM E136, AAMA 1402
- Class "A" Fire Rating
- Paint finish testing: AAMA 2605
- Available in .062" (nominal) thick aluminum
- Custom coverage area, custom system depth (we recommend 3/4" system panel depth with a shim)
- 3/4" long stainless-steel clips - allows for thermal expansion
- Standard panel length is 144"
- Open Area on exposed vented plank face: (20.3% Open Area)
- See Plank Extrusions & Accessories Line Card for additional components

### Warranty

Wood grains 15 year standard warranty. Wood Grains 20 year specialty warranties on request. Solid Colors 20 year standard warranty. Refer to warranty form for full details.

### Maintenance

To preserve the original beauty of Mosaic products a regular cleaning schedule is suggested. Clean the finish surface with water and a soft cloth or sponge until it is free of debris. If required the finish surface may be also cleaned with a mild detergent (pH 5-9) or a cleaning agent diluted to 1:50 parts of water. Refer to cleaning instructions for full details.





### Product Information

- Architectural Soffit and Wall Application
- Applied over open framing or solid substrate
- Finishes: Solid colors, woodgrains and specialty finishes available.
- Available in .062" (nominal) thick aluminum.
- System testing with CA & PA stamps: ASTM E2768/E84, ASTM E136, AAMA 1402
- Class "A" Fire Rating
- Paint finish testing: AAMA 2605
- Custom coverage area, custom system depth (we recommend ¾" system panel depth with a shim)
- ¾" long stainless steel clips- allows for thermal expansion
- Standard panel length is 14", factory cut end(s) may require a square cut.
- See Plank Extrusions & Accessories Line Card for additional profiles and components

This ventilation serves several important purposes, contributing to the overall health and efficiency of a building. Here are some benefits of venting a soffit:

**Moisture Control** - Venting helps to prevent the buildup of moisture in the attic space. Moisture can accumulate due to activities within the living space below, such as cooking, bathing, and breathing. Proper ventilation allows moisture to escape, reducing the risk of condensation and potential mold or mildew growth.

**Temperature Regulation** - Soffit vents contribute to temperature control in the attic by allowing hot air to escape during warmer months. This helps to prevent the attic space from becoming excessively hot, reducing the strain on the cooling system and potentially extending the lifespan of roofing materials.

**Energy Efficiency** - By promoting proper airflow, soffit vents assist in maintaining a more consistent temperature in the attic. This can result in lower energy costs as the HVAC system doesn't have to work as hard to cool or heat the living space. Adequate ventilation can also contribute to a more comfortable indoor environment.

**Prevention of Ice Dams** - In colder climates, proper soffit ventilation is crucial to preventing the formation of ice dams on the roof. Adequate ventilation helps to keep the attic temperature closer to the outside temperature, reducing the likelihood of snow melting on the roof and refreezing at the eaves, leading to ice dam formation.

**Extended Roof Lifespan** - Proper ventilation helps to reduce the risk of damage to roofing materials caused by excessive heat and moisture. By preventing the accumulation of heat and moisture in the attic, the lifespan of roofing materials, such as shingles and underlayment, may be extended.

**Improved Air Quality** - Adequate ventilation promotes the exchange of indoor and outdoor air, helping to maintain good indoor air quality. This can be particularly important for homes with combustion appliances, as proper ventilation prevents the buildup of pollutants and ensures the safe removal of combustion byproducts.

**Code Compliance** - Building codes often require proper attic ventilation to ensure the health and safety of the occupants. Venting a soffit helps meet these code requirements, ensuring that the building is constructed in a way that minimizes the risk of moisture-related issues and other problems associated with poor ventilation.

**Determine Venting Space (ft<sup>2</sup>) needed-** To determine how many vented soffit planks you will need, the first step is to check your local building code requirements, and if there is no existing information available, then the general rule is to calculate the square footage of venting space needed.

Total Area of Venting Needed (ft<sup>2</sup>) = (Vented Space Area (ft<sup>2</sup>)/150) Half of the area should be vented via Vented Planks, the other half of vented area should utilize other venting elements located on the roof.



Approved  
Continuing  
Education

