



GUIDE SPECIFICATION

Manufacturer:
Lumabuilt
Formerly Rollfab RMP Architectural
Solutions
2529 W. Jackson St.
Phoenix, AZ 85009
P: 602.275.1676
www.lumabuilt.com
info@lumabuilt.com

SECTION 07 42 93 EXTRUDED ALUMINUM WALL OR SOFFIT PANELS

This guide specification has been prepared by Lumabuilt, in printed and electronic media, as an aid to specifiers in preparing written construction documents for the Mosaic (Alumaboard) extruded aluminum wall panel system with a variety of finishes including wood grains, solid colors, and specialty finishes.

Edit entire master to suit project requirements. Modify or add items as necessary. Delete items which are not applicable. Words and sentences within brackets [] reflect a choice to be made regarding inclusion or exclusion of a particular item or statement. This section may include performance, proprietary, and descriptive type specifications. Edit to avoid conflicting requirements. Editor notes to guide the specifier are included between lines of asterisks to assist in choices to be made. Remove these notes before final printing of specification.

This guide specification is written around the Construction Specifications Institute (CSI), Section Format standards references to section names and numbers are based on MasterFormat 2020.

For specification assistance on specific product applications, please contact our offices above or any of our 50 local service centers throughout the country.

Lumabuilt reserves the right to modify these guide specifications at any time. Updates to this guide specification will be posted to the manufacturer=s web site and/or in printed matter as they occur. Lumabuilt makes no expressed or implied warranties regarding content, errors, or omissions in the information presented.

PART 1 - GENERAL

- 1.1 SUMMARY
 - A. Section Includes:
 - 1. Extruded metal wall panel cladding installed using a “drained back ventilated rainscreen” method of installation, relying on air/moisture barrier behind panels to provide secondary moisture management and drainage to the exterior.
 - 2. Trim and accessories to complete installation.
- 1.2 PREINSTALLATION MEETINGS
 - A. Preinstallation Conference: Conduct conference at project site.

1. Meet with Contractor, Architect, metal wall and/or soffit panel Installer, metal wall panel manufacturer's representative, and related parties.
2. Review and finalize construction schedule and verify availability of materials, Installer's personnel, equipment, and facilities needed to make progress and avoid delays.
3. Review methods and procedures related to metal wall and/or soffit panel installation, including manufacturer's written instructions.
4. Examine support conditions for compliance with requirements, including alignment between and attachment to structural members.
5. Review flashings, special siding details, wall penetrations, openings, and condition of other construction that affect metal material panels.
6. Review governing regulations and requirements for insurance, certificates, and tests and inspections if applicable.
7. Review procedures for repair of panels damaged after installation.
8. Document proceedings, including corrective measures and actions required, and furnish copy of record to each participant.

1.3 ACTION SUBMITTALS

- A. Product Data: For each type of product.
 1. Include construction details, material descriptions, dimensions of individual components and profiles, and finishes for each type of cladding and accessory.
- B. Shop Drawings as required:
 1. Include fabrication and installation layouts of metal cladding; details of edge conditions, joints, cladding profiles, corners, anchorages, attachment system, trim, flashings, closures, and accessories; and special details.
 2. Accessories: Include details of flashing, trim, and anchorage systems, at a scale of not less than 1-1/2 inches per 12 inches.
 3. Delegated Design: Provide shop drawings signed and sealed by a structural engineer licensed to practice in the location of the project, indicating ability of system and attachment to supporting construction to resist indicated or code required loads.

C. LEED or Environmentally Required Documents:

1. Use primary and secondary 6XXX series aluminum alloys. Approximately 40% extruded products are produced with recycled secondary aluminum (32% post-consumer content and 8% pre-consumer content); material received and recycled by local suppliers. The remaining percentage of our production is to be processed from primary billet which typically contains 3 - 5% recycled aluminum. Aluminum products shall be 100% recyclable with no downgrading of the material qualities.

- a) MR2.1 and 2.2: Construction waste management: 1-2 points
 - Aluminum recycling
- b) MR4.1 and 4.2: Recycled Content: 1-2 points
 - Recycled content in aluminum extrusions
- c) MR5.1 and 5.2: Regional Materials: 1-2 points
 - Recycled content recovered, reprocessed near project
- d) ID1: Innovation in Design: 1 point
 - For use of Cradle-to-Cradle certified materials

D. Samples:

1. Selection Samples: For each finish product specified, two complete sets of color chips representing manufacturer's full range of available colors and patterns (typical 3"x6")(76 mm x 152mm). Include similar Samples of trim and accessories involving color selection (typical 6" length) (152 mm).
2. Verification Samples: 6 inches (152 mm) long by actual panel width. Include fasteners, closures, and other metal panel accessories.

E. Manufacturer's Certificates: Certify products meet or exceed specified requirements.**1.4 INFORMATIONAL SUBMITTALS**

- A. Sample Warranties.
- B. Submit sustainability documentation for recycled content and other pertinent attributes in support of project's sustainability goals.

1.5 CLOSEOUT SUBMITTALS

- A. Maintenance Data: For metal cladding to be included in maintenance manuals.

1.6 QUALITY ASSURANCE

- A. Installer Qualifications: An entity that employs installers and supervisors who are trained and approved by the manufacturer.
- B. **[Mockups]:** Build mockups to verify selections made under Sample submittals, to demonstrate aesthetic effects, and to set quality standards for fabrication and installation.
 1. Build mockup of typical wall as indicated on Drawings; approximately four units wide (such as four 6" planks), including attachments and accessories.
 2. Approval of mockups does not constitute approval of deviations from the Contract Documents contained in mockups unless Architect specifically approves such deviations in writing.
 3. Subject to compliance with requirements, approved mockups may become part of the completed Work if undisturbed at time of Substantial Completion.

1.7 DELIVERY, STORAGE, AND HANDLING

- A. Deliver components, aluminum planks, and other manufactured items so as not to be damaged or deformed. Package aluminum planks for protection during transportation and handling.
- B. Unload, store, and erect aluminum planks in a manner to prevent bending, warping, twisting, and surface damage.
- C. Stack planks horizontally on platforms or pallets, covered with suitable weathertight and ventilated covering. Store planks to ensure dryness, with positive slope for drainage of water. Do not store planks in contact with other materials that might cause staining, denting, or other surface damage.

1.8 FIELD CONDITIONS

- A. Weather Limitations: Proceed with installation only when existing and forecasted weather conditions permit assembly of aluminum plan to be performed in accordance with manufacturers' written instructions and warranty requirements.

1.9 COORDINATION

1. Coordinate plank installation with rain drainage work, flashing, trim, construction of walls, and other adjoining work to provide a leakproof, secure, and noncorrosive installation.

1.10 WARRANTY

1. Special Warranty: Manufacturer's standard form in which manufacturer agrees to repair or replace components of metal cladding systems that fail in materials or workmanship within specified warranty period. Warranty terms and conditions, found in Lumabuilt warranty, apply.
 - a. Failures include, but are not limited to, the following:
 - b. Buckling not associated with the substrate and/or structure to which the Mosaic system is attached. Defined as 1/16" out of plane per linear foot.
2. Warranty on Cladding Finishes: Manufacturer's standard form in which manufacturer agrees to repair finish or replace metal cladding that show evidence of deterioration of factory-applied finishes within specified warranty period. Warranty terms and conditions, found in Lumabuilt warranty, apply.
 - a. **[Solid Color Finish]** Deterioration includes, but is not limited to, the following:
 - i. Color Retention: Color fading more than 7 units from the original color, when tested in accordance with ASTM D2244.
 - ii. Gloss Retention: Finish will exhibit gloss retention of a minimum of 50% of the original gloss when measured in accordance to ASTM D523 at a 60° angle.
 - iii. Chalking Resistance: Chalking in excess of a No. 8 rating when tested in accordance with ASTM D4214 Test Method A.
 - iv. Checking and Cracking: Will not visibly check or crack in such a way as to significantly adversely affect the appearance of the surface.
 - v. **Finish Warranty Period: 20 years.**
 - b. **[Woodgrain Finish Standard]** Deterioration includes, but is not limited to, the following:
 - i. Color Retention: Color fading more than 5 units from the original color, when tested in accordance with ASTM D2244.
 - ii. Gloss Retention: The coated surface will exhibit gloss retention to a minimum of 30% from the original gloss.
 - iii. Chalking Resistance: Chalking in excess of a No. 8 rating when tested in accordance with ASTM D4214.
 - iv. Checking and Cracking: There will be no clearly visible checking or cracking of the painted finish on the products installed on the building.
 - v. Paint Adhesion: Adhesion of Painted Finish when initially applied to test panels and measured by reference to AAMA 2604-02; Clause 7.4.2 will show no evidence of film removal.
 - vi. **Finish Warranty Period: Standard 15 years.**
 - c. **[Woodgrain Finish Optional]** Deterioration includes, but is not limited to, the following:
 - i. Color Retention: Color fading more than 5 units from the original color, when tested in accordance with ASTM D2244.
 - ii. Gloss Retention: The coated surface will exhibit gloss retention to a minimum of 30% from the original gloss.
 - iii. Chalking Resistance: Chalking in excess of a No. 8 rating when tested in accordance with ASTM D4214.
 - iv. Checking and Cracking: There will be no clearly visible checking or cracking of the painted finish on the products installed on the building.
 - v. Paint Adhesion: Adhesion of Painted Finish when initially applied to test panels and measured by reference to AAMA 2604-02; Clause 7.4.2 will show no evidence of film removal.
 - vi. Finish Warranty Period: **[Enhanced 20 years] [AAMA 2604 10-year or AAMA 2605 20-year American Standard]**

PART 2 - PRODUCTS

2.1 PERFORMANCE REQUIREMENTS

- A. Structural Performance: Provide metal cladding systems capable of withstanding the effects of the following loads, based on testing in accordance with AAMA 1402 (static pressure testing).
 - 1. Wind Loads: As indicated on Drawings or as required to meet applicable building codes.
- B. Thermal Movements: Allow for thermal movements from ambient and surface temperature changes by preventing buckling, opening of joints, overstressing of components, failure of joint sealants, failure of connections, and other detrimental effects. Base calculations on surface temperatures of materials due to both solar heat gain and nighttime-sky heat loss.
 - 1. Temperature Change (Range): 120 deg F, ambient; 180 deg F, material surfaces.
- C. Drainage: Provide positive drainage to exterior for moisture entering or condensation occurring within panel system.
- D. Flame Spread: Meets ATM E84, Class A.

2.2 METAL WALL OR SOFFIT CLADDING

- A. Provide metal wall or soffit claddings designed to be installed by interconnecting side edges of adjacent cladding and mechanically attaching through cladding clips to supports using concealed fasteners into the side lap clips. Include accessories required for a complete rainscreen system.
- B. Metal Wall or Soffit Cladding: Extruded shapes with flush or v-groove joints as indicated.
 - 1. Acceptable Manufacturer and Product: Lumabuilt Mosaic (Alumaboard); www.lumabuilt.com.
 - 2. Substitutions: Submit in accordance with Section 01 60 00.
- C. Materials: Extruded aluminum meeting ASTM B221, Alloy 6063-T6, of 0.063 inch thickness nominal.
 - 1. Standard Panel Length: 24 feet (7.2 M).
 - 2. Panel Thickness: 1/2 inch (12 mm).
 - 3. System Depth: 5/8 inch (16 mm).

In 6 below, make panel width and joint type selection.



[Select size] remove if not applicable

- 4. Size and Joint Configuration:
 - a. [4 inch (100 mm) wide V groove]
 - b. [6 inch (150 mm) wide V groove]
 - c. [6 inch (150 mm) wide flush joint]
 - d. [8 inch (200 mm) wide V groove]
 - e. [10 inch (250 mm) wide V groove]

2.3 MISCELLANEOUS MATERIALS

- A. Panel Attachment Clips: Stainless steel with not less than 14% chromium content, alloy 304-2b (1/4 hard), 0.035 inch (0.889 mm) thickness.
- B. Miscellaneous Metal Sub framing and Furring: ASTM C645, cold-formed, metallic-coated steel sheet, ASTM A653/A653M, G90 hot-dip galvanized coating designation or ASTM A792/A792M, Class AZ50 aluminum-zinc-alloy coating designation unless otherwise indicated.
- C. Cladding Accessories: Provide components required for a complete cladding system including trim, clips, sealants, and similar items. Match material and finish of metal cladding unless otherwise indicated.
- D. Flashing and Trim: Provide aluminum flashing as required to seal against weather and to provide finished appearance. Match material and finish of metal cladding unless otherwise indicated.
- E. Cladding Fasteners: Screws (#8 screws) designed to withstand design loads.

2.4 FABRICATION

- A. Fabricate and finish metal cladding and accessories at the factory, by manufacturer's standard procedures and processes, as necessary to fulfill indicated performance requirements demonstrated by laboratory testing. Comply with indicated profiles and with dimensional and structural requirements.
- B. Sheet Metal Flashing: Fabricate flashing and trim to comply with manufacturer's written instructions and recommendations.

2.5 FINISHES

- A. Appearance of Finished Work: Variations in appearance of abutting or adjacent pieces are acceptable. Noticeable variations in same piece are acceptable and typical.

In B below, select desired panel finish(s), and if known, specific color. Type of finish and color has a significant impact on cost, so as much detail as possible is encouraged.

- B. Aluminum Panels, Soffits or Accessories:

- 1. Pretreatment: Chrome Free five stage aluminum pretreatment system. Complies with AAMA 2603 AAMA 2604 and AAMA 2605 Superior Performance Standard and meets EPA, OSHA, State and Local environmental requirements and contains no chromates, cyanides or other heavy metals. Waste treatment is usually a simple pH neutralization and disposal to the sanitary sewer.

[Select finish] Remove if not applicable.

- a) [Wood Grains]: Premium wood finishes using a polyurethane powder coat with ink-based wood grain patterns sublimated into the base powder. The combined effect creates all the aesthetic aspects of real wood. Color:[_____]
- b) [Solid Colors]: Premium finishes using a polyurethane powder coat available in smooth or fine textured finish. Color: [_____]
- c) [Specialty Finishes]: Premium finishes using a polyurethane powder coat with ink-based patterns sublimated into the base powder. The combined effect creates all the aesthetic aspects of finishes such as weathered steel, concrete, stone, marble, and other offerings. Color: [_____]

- 2. Contact Lumabuilt for available wood grains, solid color options, and texture finishes.

PART 3 - EXECUTION

3.1 EXAMINATION

- A. Examine substrates, areas, and conditions, with Installer present, for compliance with requirements for installation tolerances, metal cladding supports, and other conditions affecting performance of the Work.
 - 1. Examine framing to verify that girts, angles, channels, studs, and other structural cladding support members and anchorage have been installed within alignment tolerances of 1/4" within 20 feet, as required by metal cladding manufacturer.
 - 2. Examine sheathing to verify that sheathing joints are supported by framing or blocking, and that installation is within flatness tolerances required by metal cladding manufacturer.
 - a. Verify that air- or water-resistive barriers have been installed over sheathing or backing substrate to prevent air infiltration or water penetration.
- B. Examine roughing-in for components and systems penetrating metal cladding to verify actual locations of penetrations relative to seam locations of metal cladding before installation.
- C. Proceed with installation only after unsatisfactory conditions have been corrected.

3.2 PREPARATION

- A. Miscellaneous Supports (by others): Install sub framing, furring, and other miscellaneous cladding support members and anchorages in accordance with ASTM C754 (standard specification for steel framing) and metal cladding manufacturer's written recommendations.

3.3 INSTALLATION

- A. Install metal cladding in accordance with manufacturer's written instructions in orientation, sizes, and locations indicated. Install cladding perpendicular to supports unless otherwise indicated. Anchor metal cladding and other components of the Work securely in place, with provisions for thermal and structural movement.
 1. Shim or otherwise plumb substrates receiving metal cladding.
 2. Flash and seal metal cladding at perimeter of all openings. Fasten with self-tapping screws. Do not begin installation until air- or water-resistive barriers and flashings that will be concealed by metal cladding are installed.
 3. Install trims according to manufacturer's guidelines.
 4. Install planks using stainless steel fastening clips and #8 screws, in accordance with manufacturer's guidelines, hard pinning in certain conditions may be required.
 5. Locate and space fastenings in uniform vertical and horizontal alignment.
 6. Install flashing and trim as metal cladding work proceeds.
 7. Provide weathertight escutcheons for pipe- and conduit-penetrating cladding.

3.4 CLEANING AND PROTECTION

- A. On completion of metal cladding installation, clean finished surfaces as recommended by metal cladding manufacturer. Maintain a clean condition during construction
- B. Replace metal cladding that has been damaged or has deteriorated beyond successful repair by finish touchup or similar minor repair procedures.

END OF SECTION 07 42 13.14



Lumabuilt

Cavasson Nationwide Building

Mosaic

Planks and Battens

Mosaic works beautifully on exteriors as well as interiors and has a wide variety of profiles for use for cladding, soffits, enclosure screens, ceilings, walls, partitions, and a variety of custom solutions. The design capabilities are endless with the versatility of Mosaic. The product is lightweight, durable and our licensed proprietary sublimation process will make its low maintenance beauty last for years.

USES:

Soffits, Cladding, Privacy, Enclosure Screens, Ceilings, Walls, Battens, Decorative Elements, Signage, Vertical or Horizontal Installations

WOOD FINISHES

 WHITE OAK V1   	 LIGHT MAPLE V2	 DRIFTWOOD V3    	 LIGHT PECAN V3	 RED OAK V3   	 LIGHT SUPER WIDE GRAIN V3	 WEATHERED TEAK V3	 COASTLINE V3	 BASSWOOD V3	 CREAM FIR V1
 WHITE BAMBOO V1	 BLACK WALNUT V1   	 DARK NATIONAL WALNUT V1	 LIGHT NATIONAL WALNUT V1	 AMERICAN WALNUT V2	 LIGHT AMERICAN WALNUT V2	 TABLE WALNUT V3	 LIGHT TABLE WALNUT V3	 WHITE AMERICAN WALNUT V2	 SUPER OAK V3
 DARK SUPER OAK V3	 DARK SUPER WIDE GRAIN V3	 SUPER WIDE GRAIN V3	 AMBER BAMBOO V1	 DARK AMBER BAMBOO V1	 AFRICAN ROSEWOOD V1	 LIGHT AFRICAN ROSEWOOD V1	 LIGHT HAZELNUT BROWN V1	 HAZELNUT BROWN V1	 DARK FIR V1
 LIGHT FIR V1	 COLONY MAPLE V3	 DARK COLONY MAPLE V3	 DARK KNOTTY PINE V2	 EXTRA DARK KNOTTY PINE V2	 MEDIUM CHERRY V3	 DARK CHERRY V3	 PHOENIX COPPER    	<p>V-RATING V1 - MINIMAL VARIANCE V2- COLOR OR PATTERN VARIANCE V3- COLOR AND PATTERN VARIANCE</p>     	

SMOOTH & TEXTURE FINISHES

 OIL RUBBED BRONZE	 DARK BRONZE	 BLACK	 SERIOUS GRAY	 GRAPHITE   	 CHARCOAL	 SIGNAL WHITE	 SIERRA TAN	 RUST SPICE   	 WEATHERING STEEL   
 ARIZONA BLUE	 TURMERIC	 RED BRICK	 BURNT GARNET	 LUCKY GREEN	 INK BLACK	 DEEP OLIVE	 AEGEAN BLUE	 SUMMER SAGE   	 CALIFORNIA BRONZE  

FEATURES & BENEFITS:

- Lightweight & Durable
- Time & Labor Savings with Ease of Installation
- 100% Recyclable
- Matching End Caps in Solid Colors or Wood Grain Finishes (Battens)
- Architectural Soffit & Wall Applications
- Installed Over Open Framing or Solid Substrate
- Battens Mechanically Attached with Internal Fastening
- 15 Year Finish Warranty, 20 Year Specialty Warranties on Request
- Perfect for Exterior or Interior Applications
- Paint Finish Testing: AAMA 2604 & Class "A" Fire Rating
- Custom Colors & Color Matching Available
- Ask us about our other product lines; Cor, AP400 & Rollfab

DIMENSIONS:

PLANKS (12' OR 24' LENGTHS)

- 2.5" V-GROOVE
- 4" V-GROOVE
- 6" V-GROOVE
- 8" V-GROOVE
- 10" V-GROOVE
- 6" FLUSH PLANK

SOLID BATTENS (24' LENGTHS)

- 1"×3"
- 1"×4"
- 1"×5"
- 1"×6"
- 1"×8"
- 2"×8" (2 or 6 screw bosses)

BATTEN ASSEMBLIES (24' LENGTHS)

- 2"×2"
 - 2"×3"
 - 2"×4"
 - 2"×6"
 - 2"×8"
 - 2"×10"
 - 2"×12"
 - 4"×2"
 - 6"×1"
 - 1"×3" L-Connect
 - 1"×4" L-Connect
 - 1"×5" L-Connect
 - 1"×6" L-Connect
 - 4"×8" L Connect
- Some batten assemblies are available in various configurations*

Lumabuilt

2529 W. Jackson St. | Phoenix, AZ 85009
602.275.1676 | Info@Lumabuilt.com
For more info visit: Lumabuilt.com

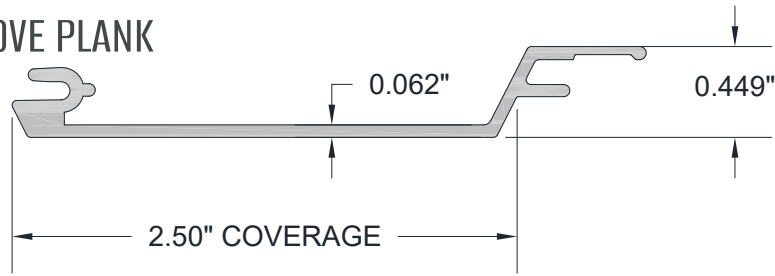
For accurate color selections
please request color samples.



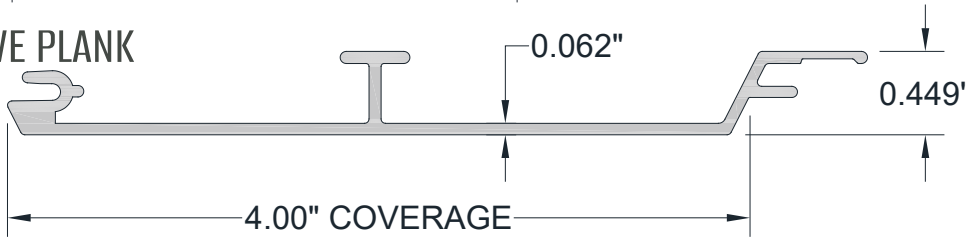
MOSAIC PANEL PROFILES

Mosaic Planks are a 6063-T6 extruded aluminum alloy, this particular alloy is most used for architectural products. Mosaic comes in two different widths and is powder coated with a variety of wood grain or solid color finishes. The standard length for all planks is 24'-0". Custom lengths less than the standard lengths above are available upon request please inquire with a sales representative for additional information.

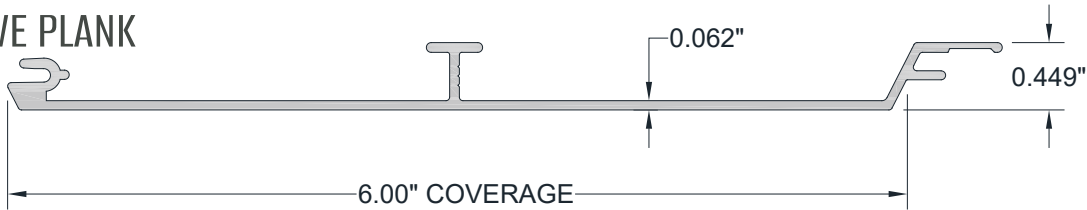
2.5" V-GROOVE PLANK



4" V-GROOVE PLANK



6" V-GROOVE PLANK



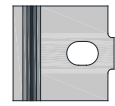
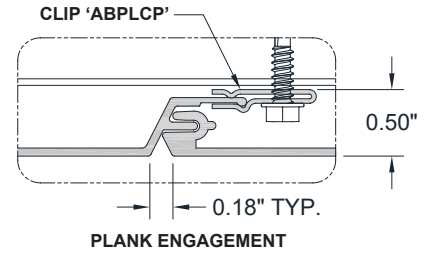
8" V-GROOVE PLANK



10" V-GROOVE PLANK



6" FLUSH PLANK



3/4" long stainless-steel clips - allows for thermal expansion.

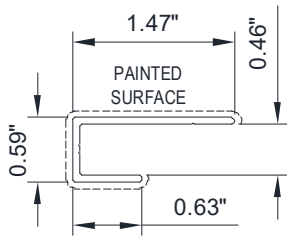


CLIPS (ABPLCP)

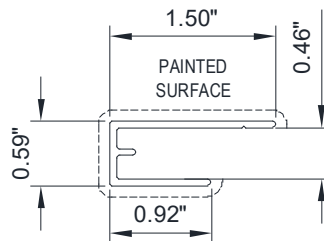
MOSAIC TRIM PROFILES

Mosaic has a variety of extruded aluminum components available that can be painted to match the panels in order to complete an installation. These parts include Starter, J-Starter, J-Closure, Edge Assembly Termination, Joint Assembly, Joint Assembly Reveal, Outside Corner, Inside Corner, 2-Piece Corner Assembly and components.

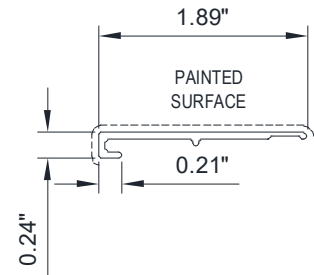
Mosaic panels are open-backed and the plank clips which are made from 304-2B x .035" thick stainless steel allow for both thermal expansion and moisture weep which complies with National Building Code Standards for Rainscreen applications by providing a continuous airspace for the entire width of the panel. Clips are fastened at 16" or 32" on center based on design windload criteria.



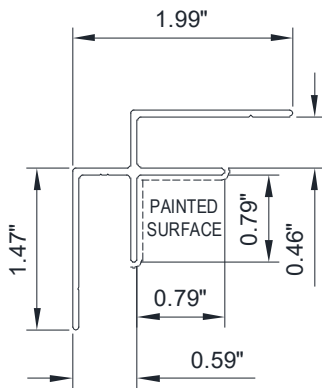
J CLOSURE



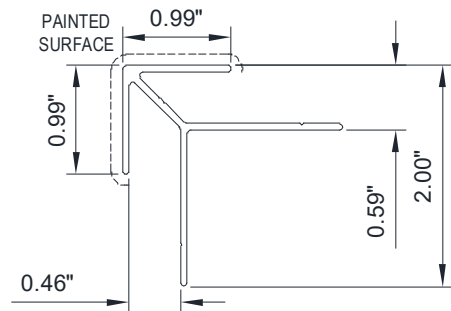
J STARTER



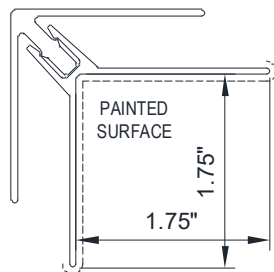
STARTER



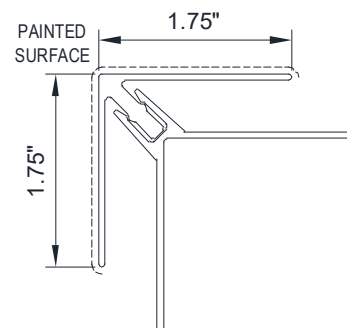
INSIDE CORNER



OUTSIDE CORNER

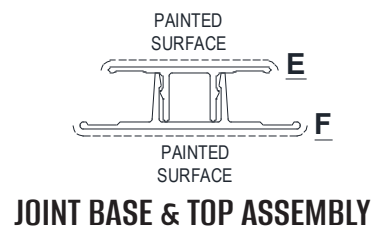
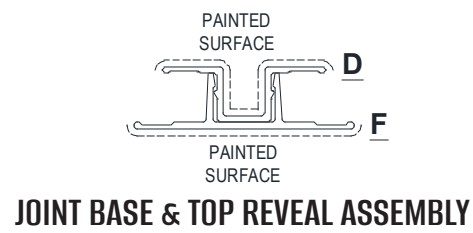
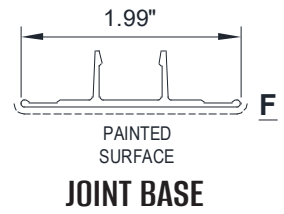
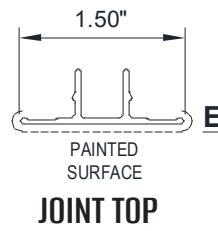
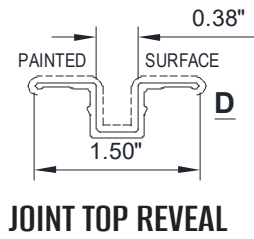
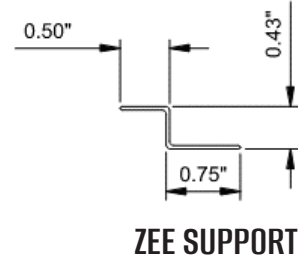
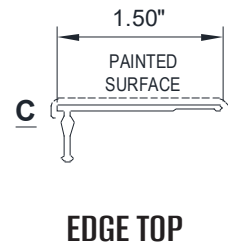


2 PC INSIDE CORNER



2 PC OUTSIDE CORNER

MOSAIC TRIM PROFILES



MOSAIC FINISHES

The pre-treatment chemicals used to prep the product for painting are a Chrome Free five stage aluminum pretreatment system, which complies with AAMA 2603, AAMA 2604 and AAMA 2605 Superior Performance Standard and meets EPA, OSHA, State and Local environmental requirements and contains no chromates, cyanides or other heavy metals. Waste treatment is usually a simple pH neutralization and disposal to the sanitary sewer.

Mosaic wood grain finishes are created by means of a US Patented process and coated with an extremely durable Powder Coating which is a blend of polyurethane powder coat mixed with an ink based wood grain pattern that is sublimated into a base powder coat. A light grainy texture may also be applied during the powder coating process to create the aesthetic effect of real wood while offering the longevity and same environmental advantage of powder coated aluminum finishes.

TECHNICAL DATA

- System testing with CA & PA stamps: ASTM E2768/E84, ASTM E136, AAMA 1402
- Class "A" Fire Rating.
- Paint finish testing: AAMA 2605
- Available in .062" (nominal) extruded aluminum.
- 2.5" coverage, system depth is 9/16" (we recommend 3/4" system panel depth with a shim)
- 3/4" long stainless-steel clips - allows for thermal expansion.



Lumabuilt

2529 W. Jackson St. | Phoenix, AZ 85009

602.275.1676 | Info@Lumabuilt.com

For more info visit: Lumabuilt.com

LB24-027 ©2024 Lumabuilt. All Rights Reserved. Revised 04.30.2024



INDEX

MISC. MOSAIC DETAILS.

I - INDEX

E4- ACCESS PANEL

E4A- ACCESS PANEL

400- 2PC. OUTSIDE CORNER @ HORIZONTAL

401- 2PC. OUTSIDE CORNER @ VERTICAL

402- 2PC. INSIDE CORNER @ HORIZONTAL

403- 2PC INSIDE CORNER @ VERTICAL

404- OUTSIDE CORNER @ HORIZONTAL

405- OUTSIDE CORNER @ VERTICAL

406- INSIDE CORNER @ HORIZONTAL

407- INSIDE CORNER @ VERTICAL

408- COW TONGUE PENETRATION (1)

409- COW TONGUE PENETRATION (2)

410- MOSAIC ACCESS PANEL

411- MOSAIC ACCESS PANEL

412- MOSAIC ACCESS PANEL

413- MOSAIC ACCESS PANEL



2529 W. Jackson St.
Phoenix, AZ 85298

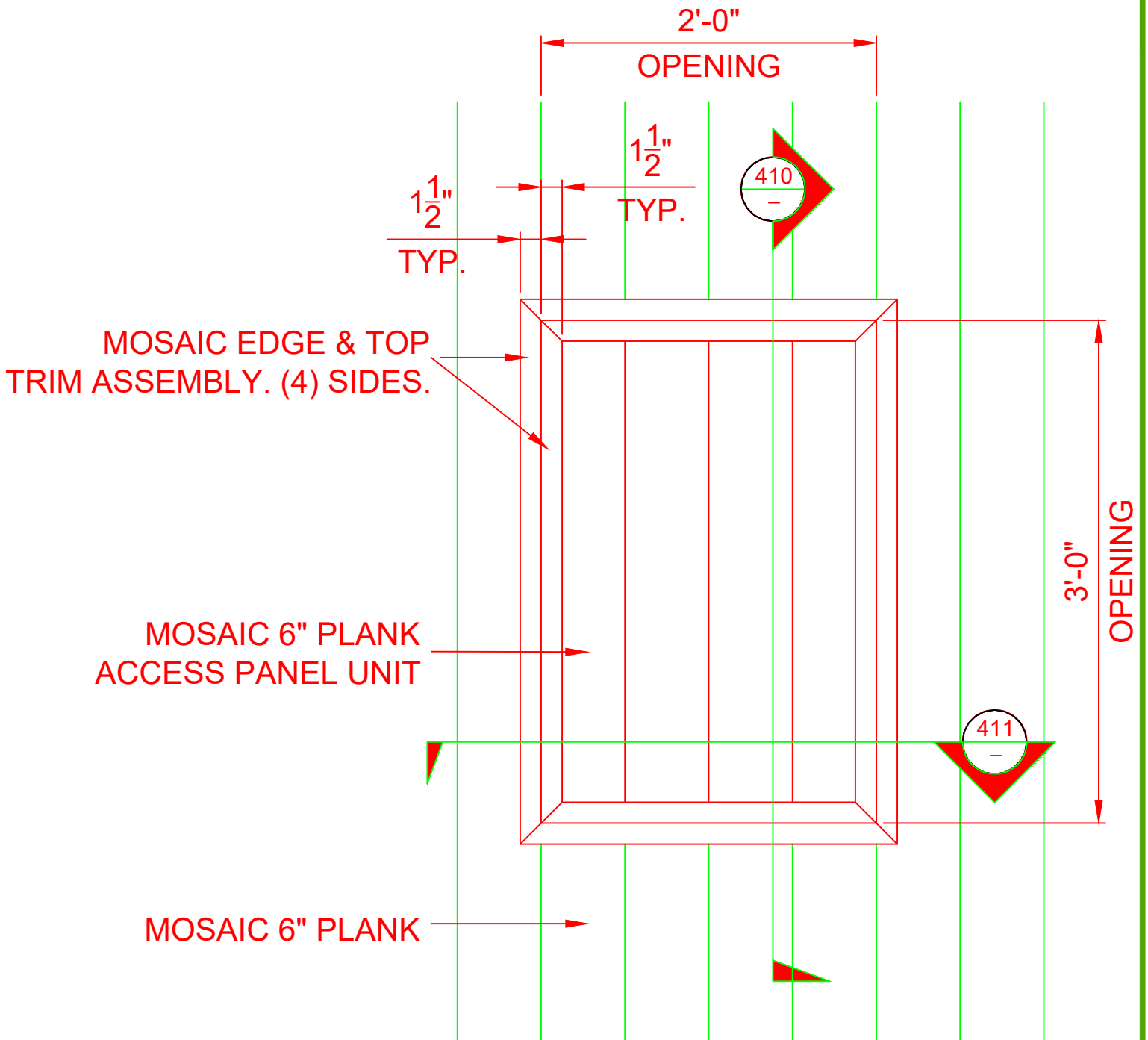
PHONE: (602) 275-1676
FAX: (602) 275-1739

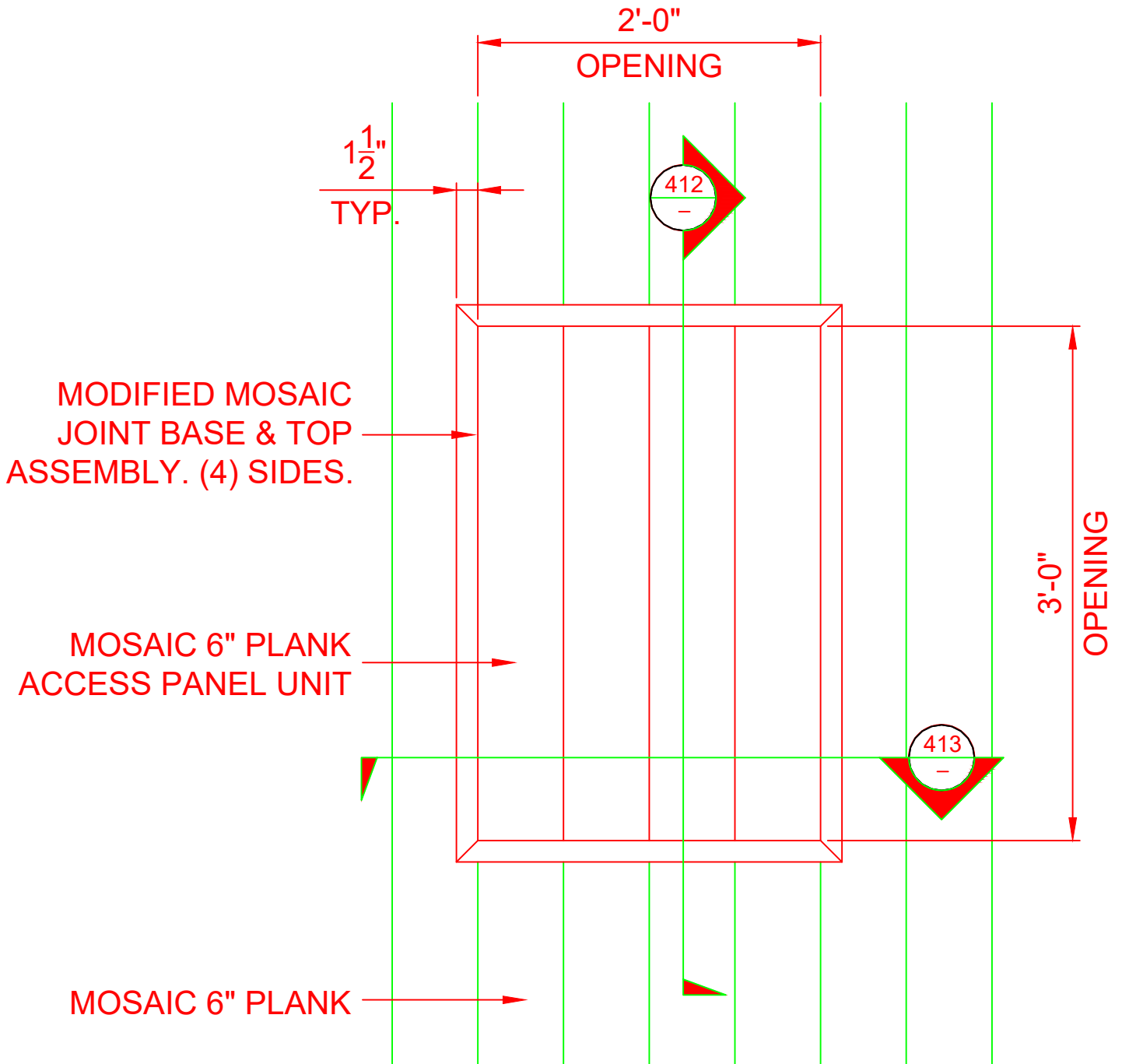
MOSAIC DETAIL INDEX

SCALE: NTS

10/18/23

SYSTEM = MOSAIC





2529 W. Jackson St.
Phoenix, AZ 85298
PHONE: (602) 275-1676
FAX: (602) 275-1739

ACCESS PANEL

E4A

SCALE: NTS

10/18/23

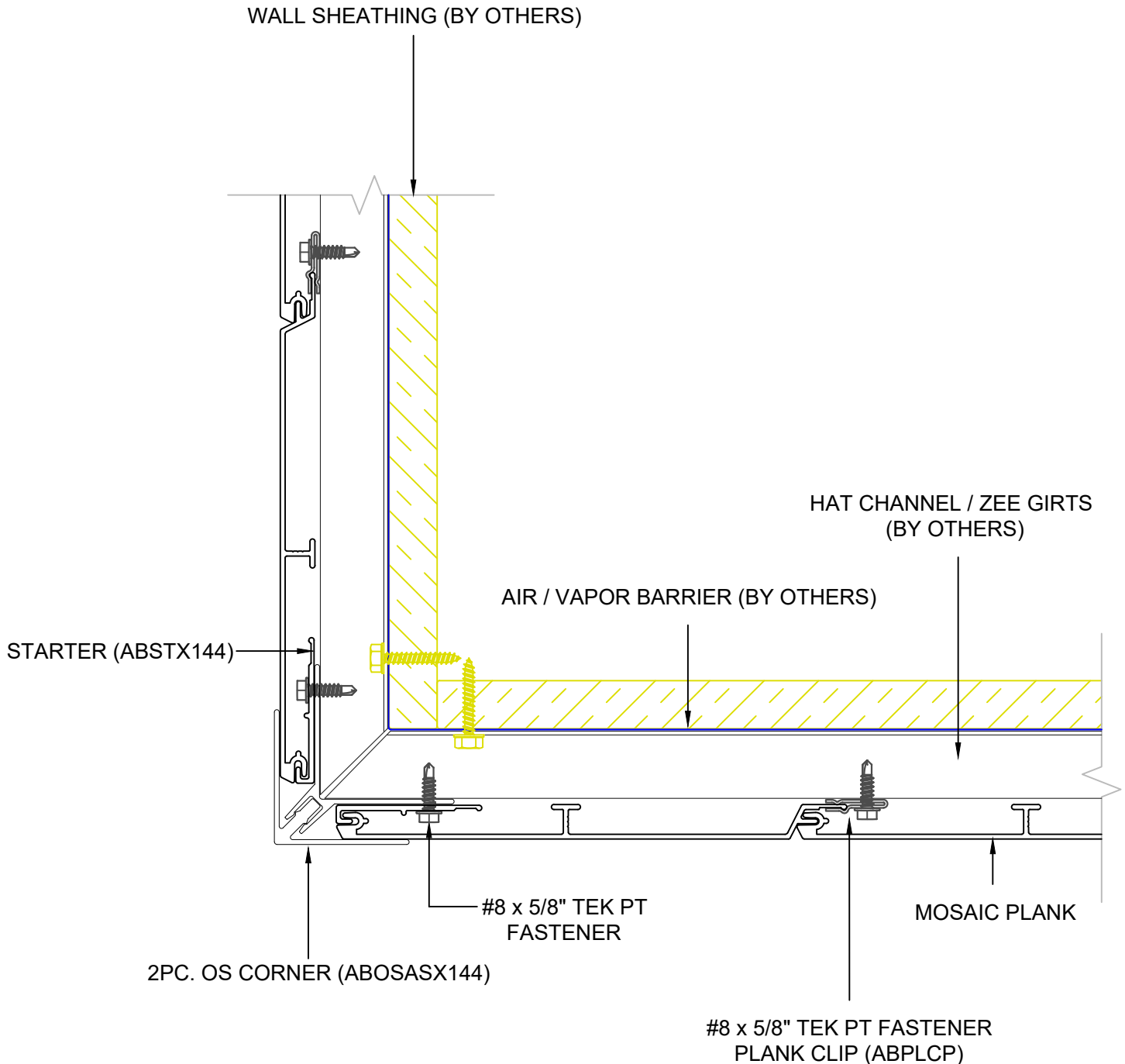
SYSTEM = MOSAIC

****ALL DETAILS SHOW MOSAIC ATTACHED TO HAT CHANNELS OVER SOLID SUBSTRATE****

****REFERENCE LOAD SPAN TABLES FOR ALL ATTACHMENT TYPES, ANCHOR TYPES, & ANCHOR SPACING****

INSTALLATION OPTIONS ARE:

- 1) OPEN FRAMING - WOOD OR METAL STUDS
- 2) WOOD SHEATHING
- 3) HAT CHANNEL OVER SHEATHING WITHOUT OR WITH A *VAPOR BARRIER (*RECOMMENDED FOR WALLS)



2529 W. Jackson St.
Phoenix, AZ 85298

PHONE: (602) 275-1676

FAX: (602) 275-1739

2PC. OUTSIDE CORNER @ HORIZ.

SCALE: NTS

10/25/23

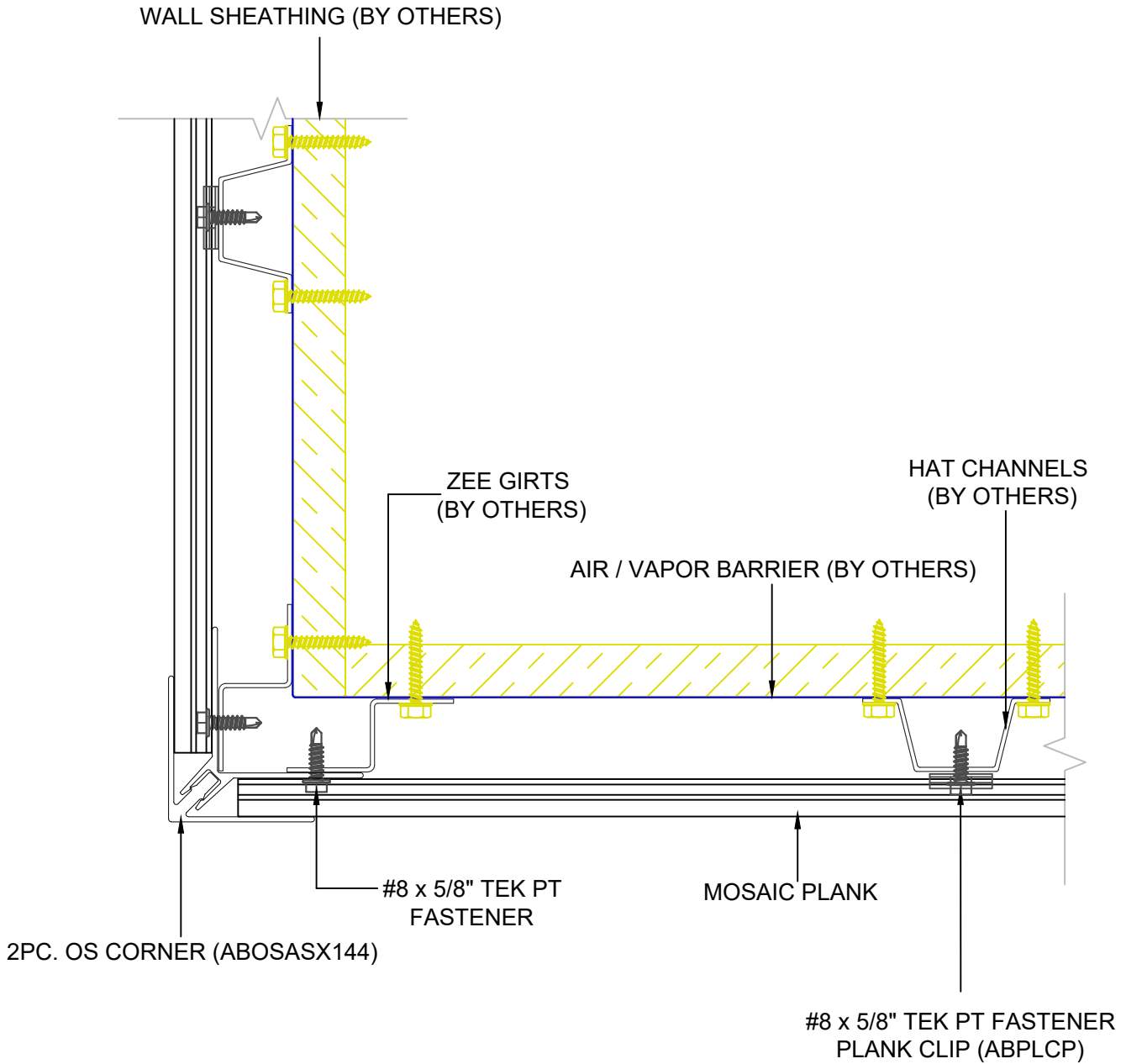
SYSTEM = MOSAIC

400

****ALL DETAILS SHOW MOSAIC ATTACHED TO HAT CHANNELS OVER SOLID SUBSTRATE****
****REFERENCE LOAD SPAN TABLES FOR ALL ATTACHMENT TYPES, ANCHOR TYPES, & ANCHOR SPACING****

INSTALLATION OPTIONS ARE:

- 1) OPEN FRAMING - WOOD OR METAL STUDS
- 2) WOOD SHEATHING
- 3) HAT CHANNEL OVER SHEATHING WITHOUT OR WITH A *VAPOR BARRIER (*RECOMMENDED FOR WALLS)



2529 W. Jackson St.
 Phoenix, AZ 85298
 PHONE: (602) 275-1676
 FAX: (602) 275-1739

2PC. OUTSIDE CORNER @ VERT

SCALE: NTS

10/25/23

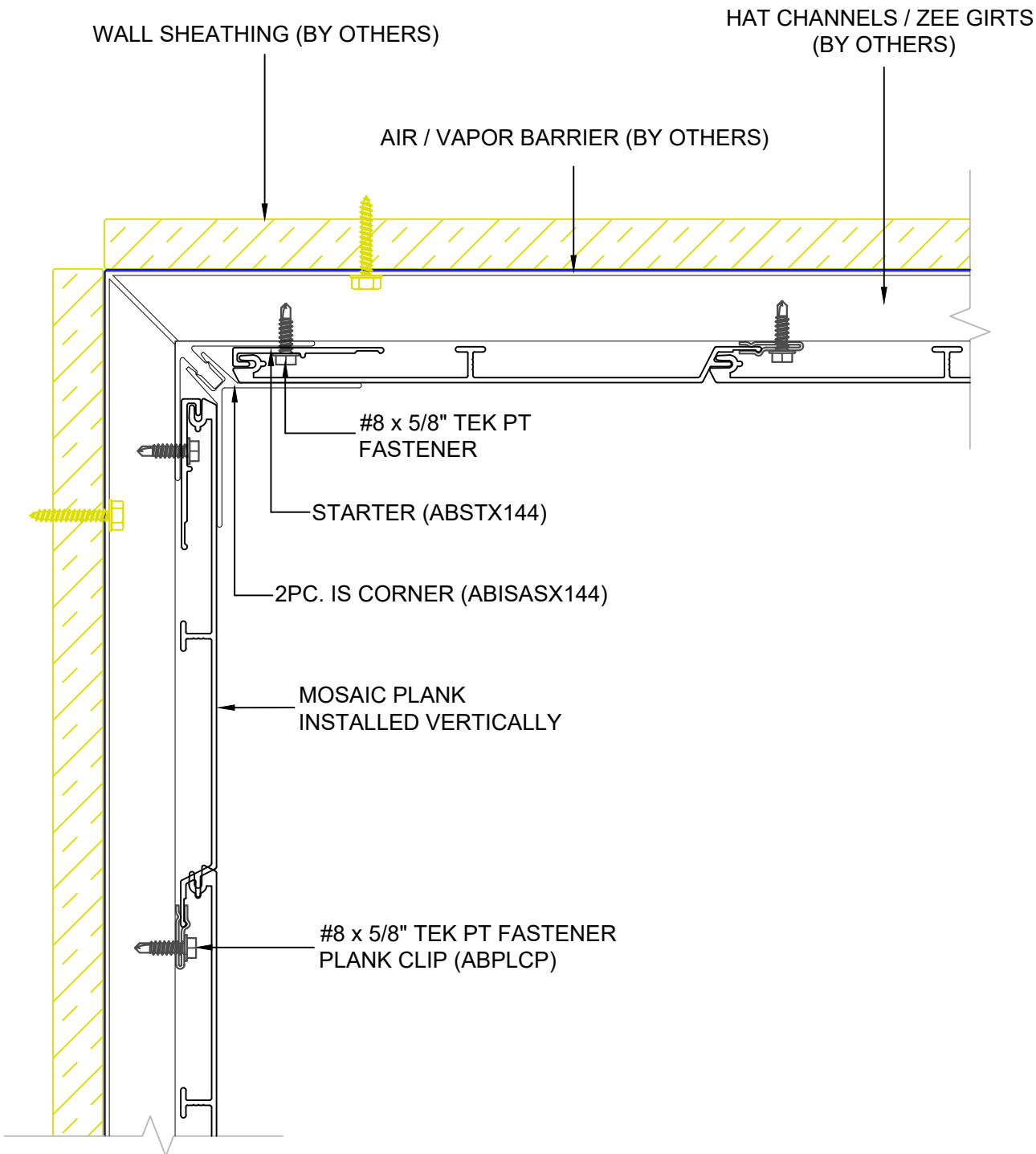
SYSTEM = MOSAIC

401

****ALL DETAILS SHOW MOSAIC ATTACHED TO HAT CHANNELS OVER SOLID SUBSTRATE****
****REFERENCE LOAD SPAN TABLES FOR ALL ATTACHMENT TYPES, ANCHOR TYPES, & ANCHOR SPACING****

INSTALLATION OPTIONS ARE:

- 1) OPEN FRAMING - WOOD OR METAL STUDS
- 2) WOOD SHEATHING
- 3) HAT CHANNEL OVER SHEATHING WITHOUT OR WITH A *VAPOR BARRIER (*RECOMMENDED FOR WALLS)



2529 W. Jackson St.
 Phoenix, AZ 85298
 PHONE: (602) 275-1676
 FAX: (602) 275-1739

2PC. INSIDE CORNER @ HORIZ

402

SCALE: NTS

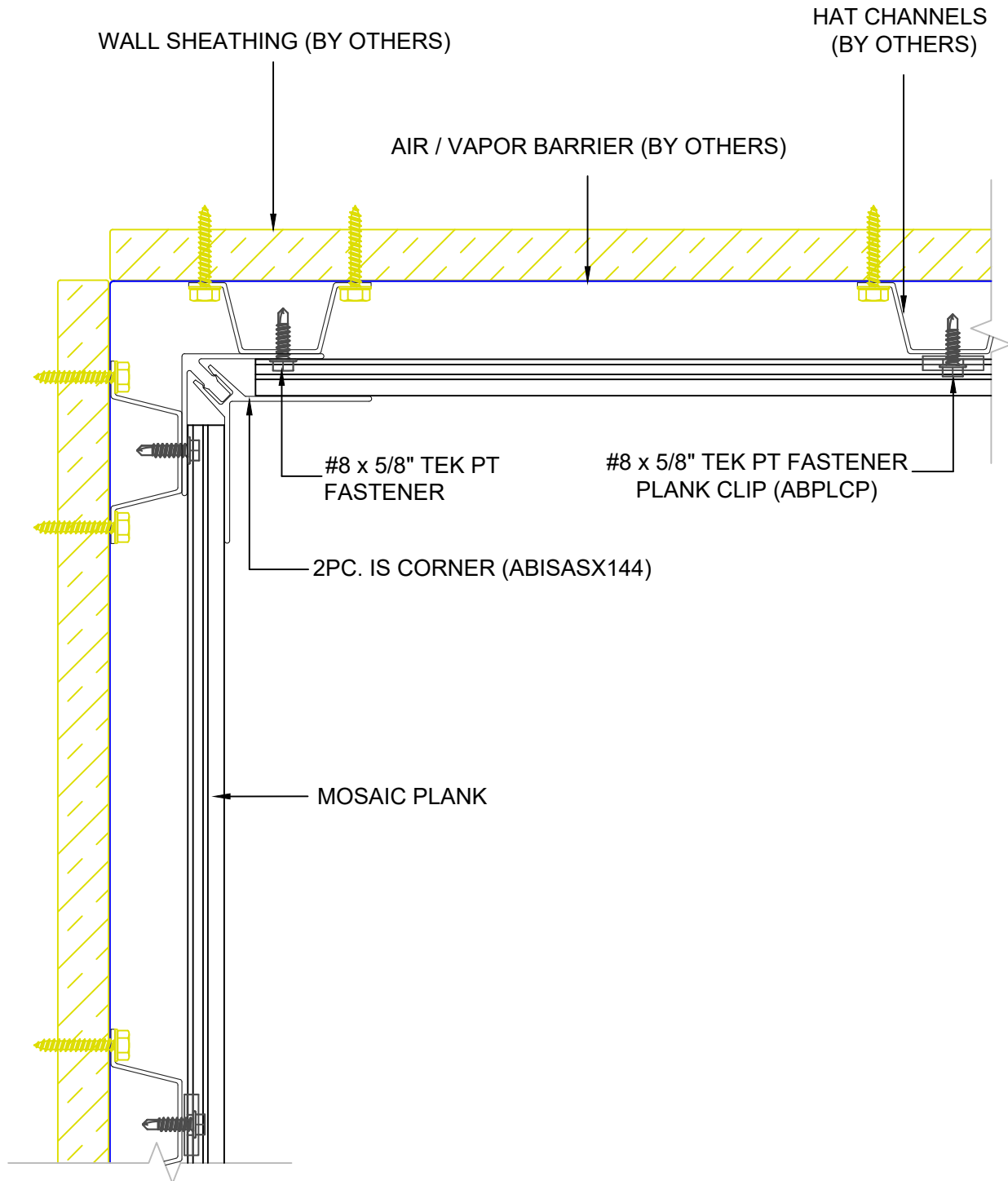
10/25/23

SYSTEM = MOSAIC

****ALL DETAILS SHOW MOSAIC ATTACHED TO HAT CHANNELS OVER SOLID SUBSTRATE****
****REFERENCE LOAD SPAN TABLES FOR ALL ATTACHMENT TYPES, ANCHOR TYPES, & ANCHOR SPACING****

INSTALLATION OPTIONS ARE:

- 1) OPEN FRAMING - WOOD OR METAL STUDS
- 2) WOOD SHEATHING
- 3) HAT CHANNEL OVER SHEATHING WITHOUT OR WITH A *VAPOR BARRIER (*RECOMMENDED FOR WALLS)



2529 W. Jackson St.
Phoenix, AZ 85298

PHONE: (602) 275-1676
FAX: (602) 275-1739

2PC. INSIDE CORNER @ VERT

SCALE: NTS

10/25/23

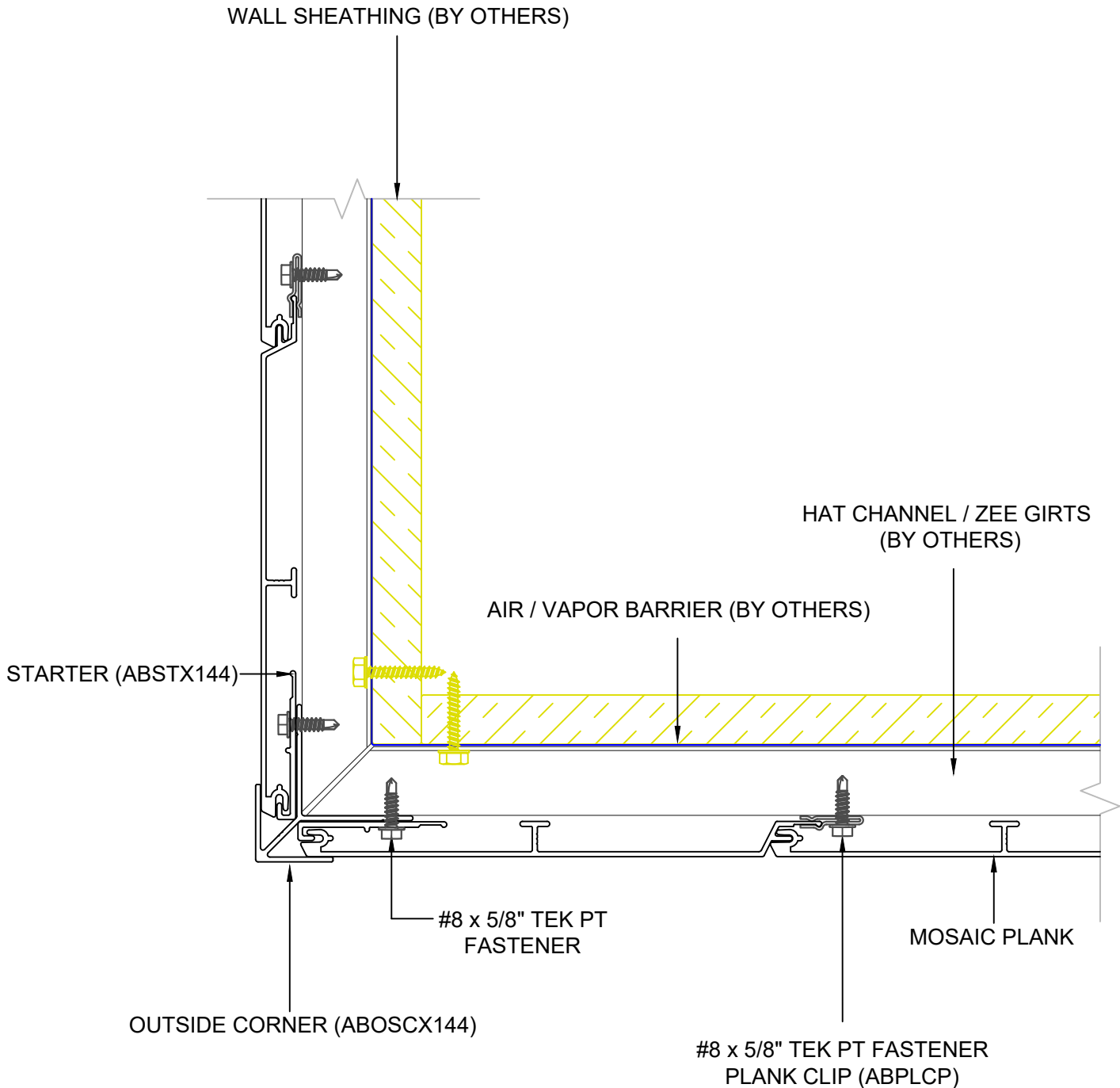
SYSTEM = MOSAIC

403

****ALL DETAILS SHOW MOSAIC ATTACHED TO HAT CHANNELS OVER SOLID SUBSTRATE****
****REFERENCE LOAD SPAN TABLES FOR ALL ATTACHMENT TYPES, ANCHOR TYPES, & ANCHOR SPACING****

INSTALLATION OPTIONS ARE:

- 1) OPEN FRAMING - WOOD OR METAL STUDS
- 2) WOOD SHEATHING
- 3) HAT CHANNEL OVER SHEATHING WITHOUT OR WITH A *VAPOR BARRIER (*RECOMMENDED FOR WALLS)



2529 W. Jackson St.
Phoenix, AZ 85298
PHONE: (602) 275-1676
FAX: (602) 275-1739

OUTSIDE CORNER @ HORIZ

404

SCALE: NTS

10/25/23

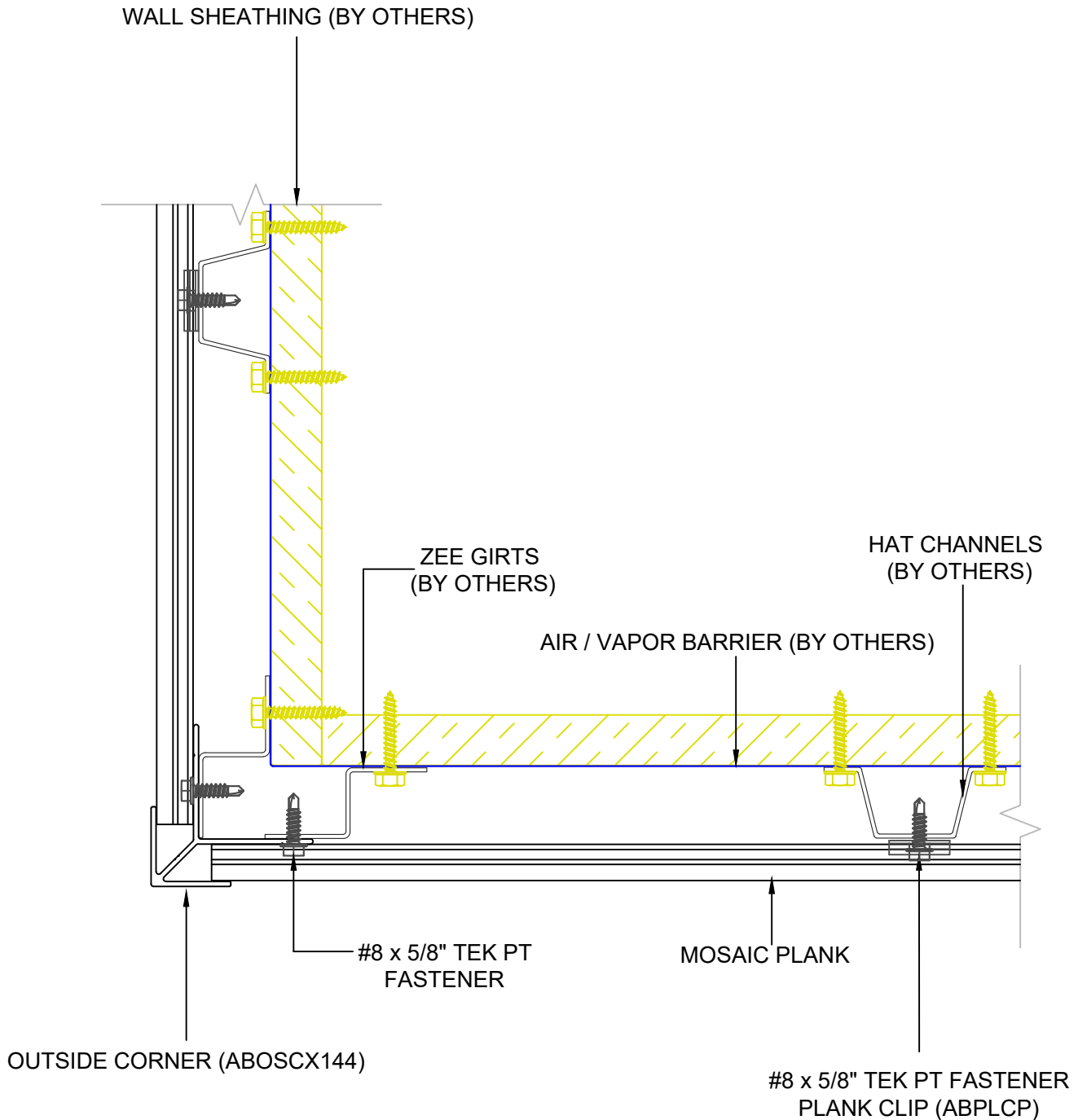
SYSTEM = MOSAIC

****ALL DETAILS SHOW MOSAIC ATTACHED TO HAT CHANNELS OVER SOLID SUBSTRATE****

****REFERENCE LOAD SPAN TABLES FOR ALL ATTACHMENT TYPES, ANCHOR TYPES, & ANCHOR SPACING****

INSTALLATION OPTIONS ARE:

- 1) OPEN FRAMING - WOOD OR METAL STUDS
- 2) WOOD SHEATHING
- 3) HAT CHANNEL OVER SHEATHING WITHOUT OR WITH A *VAPOR BARRIER (*RECOMMENDED FOR WALLS)



2529 W. Jackson St.
Phoenix, AZ 85298

PHONE: (602) 275-1676
FAX: (602) 275-1739

OUTSIDE CORNER @ VERT

SCALE: NTS

10/25/23

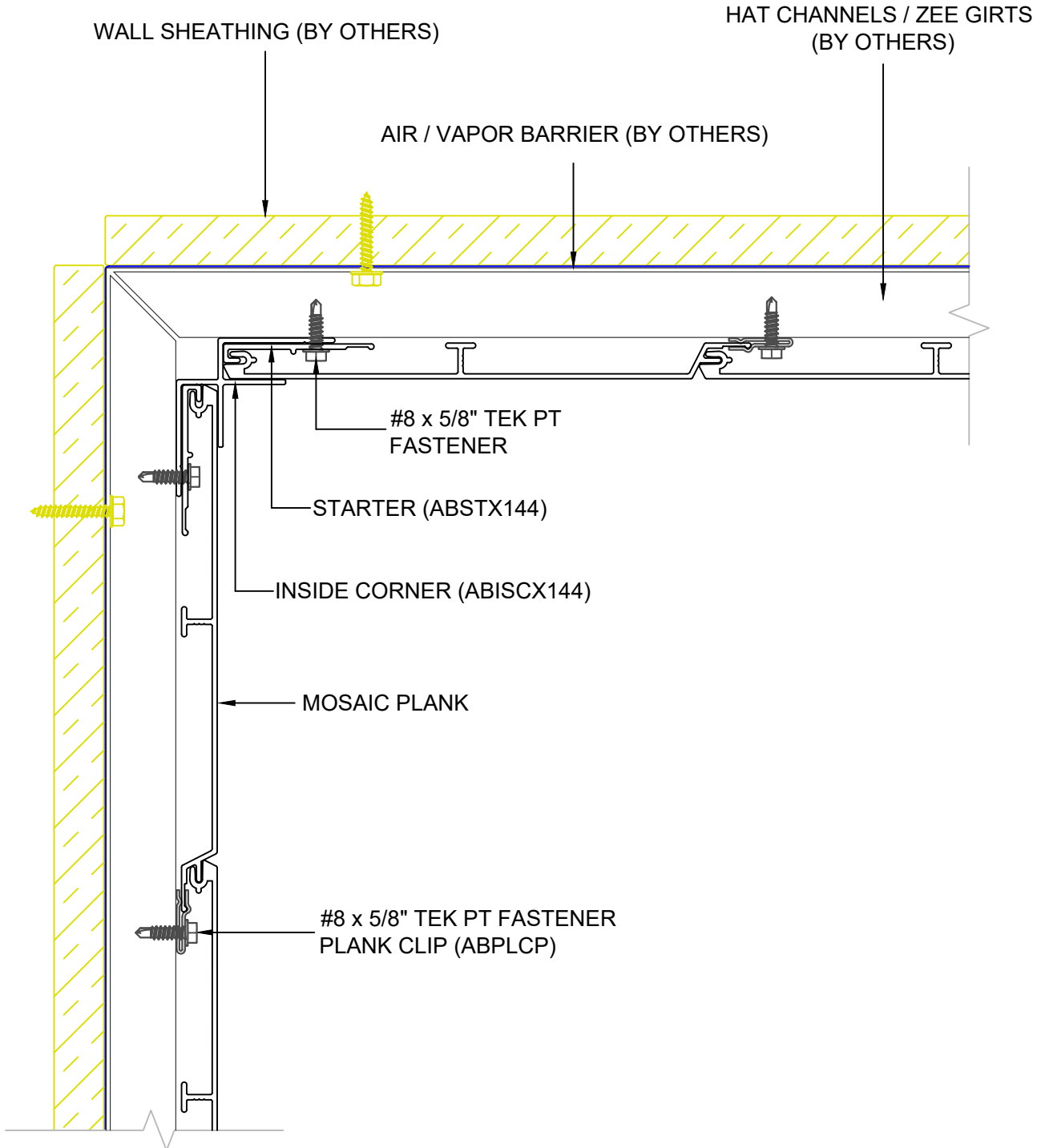
SYSTEM = MOSAIC

405

****ALL DETAILS SHOW MOSAIC ATTACHED TO HAT CHANNELS OVER SOLID SUBSTRATE****
****REFERENCE LOAD SPAN TABLES FOR ALL ATTACHMENT TYPES, ANCHOR TYPES, & ANCHOR SPACING****

INSTALLATION OPTIONS ARE:

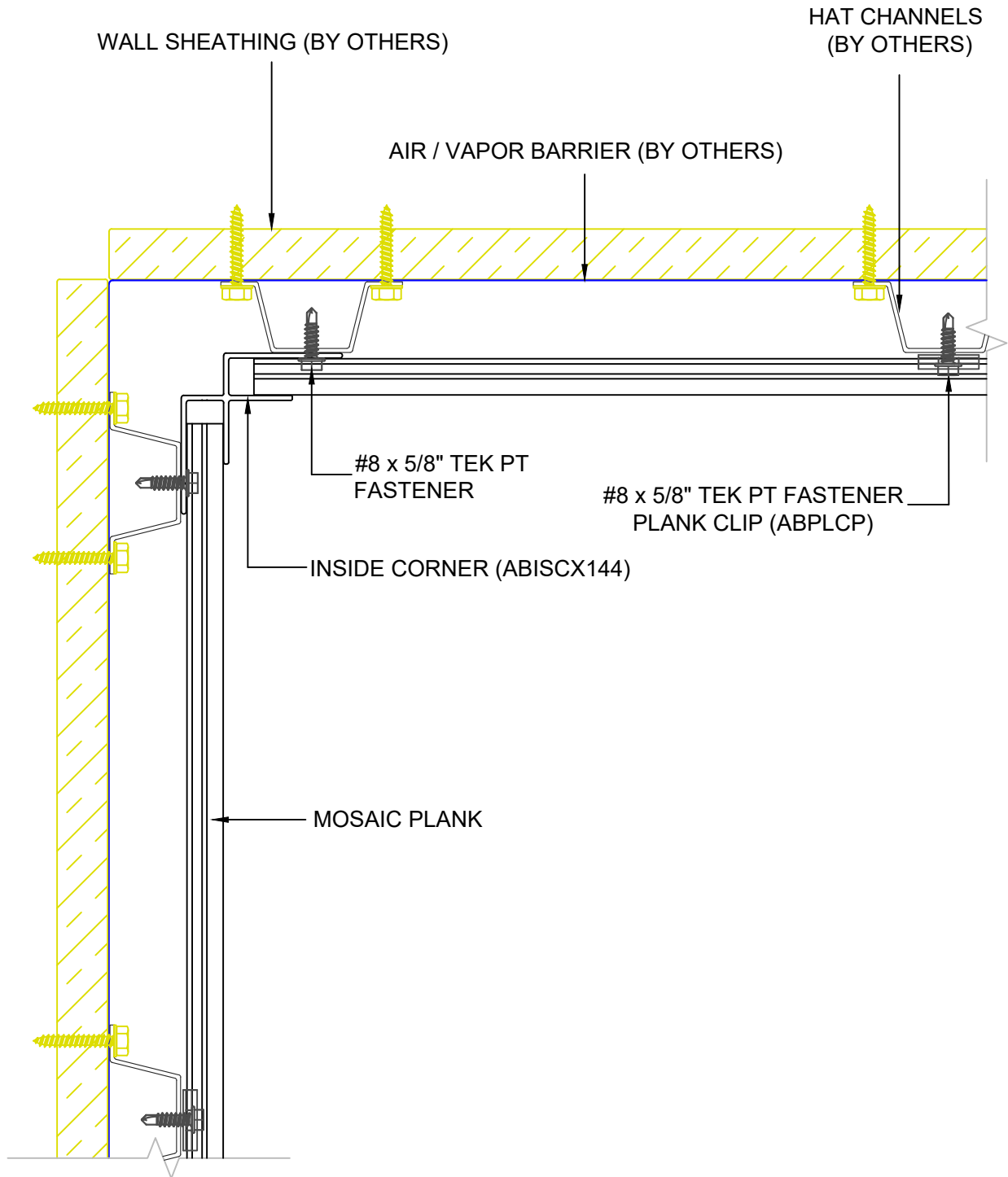
- 1) OPEN FRAMING - WOOD OR METAL STUDS
- 2) WOOD SHEATHING
- 3) HAT CHANNEL OVER SHEATHING WITHOUT OR WITH A *VAPOR BARRIER (*RECOMMENDED FOR WALLS)



****ALL DETAILS SHOW MOSAIC ATTACHED TO HAT CHANNELS OVER SOLID SUBSTRATE****
****REFERENCE LOAD SPAN TABLES FOR ALL ATTACHMENT TYPES, ANCHOR TYPES, & ANCHOR SPACING****

INSTALLATION OPTIONS ARE:

- 1) OPEN FRAMING - WOOD OR METAL STUDS
- 2) WOOD SHEATHING
- 3) HAT CHANNEL OVER SHEATHING WITHOUT OR WITH A *VAPOR BARRIER (*RECOMMENDED FOR WALLS)



2529 W. Jackson St.
Phoenix, AZ 85298

PHONE: (602) 275-1676
FAX: (602) 275-1739

INSIDE CORNER @ VERT

SCALE: NTS

10/25/23

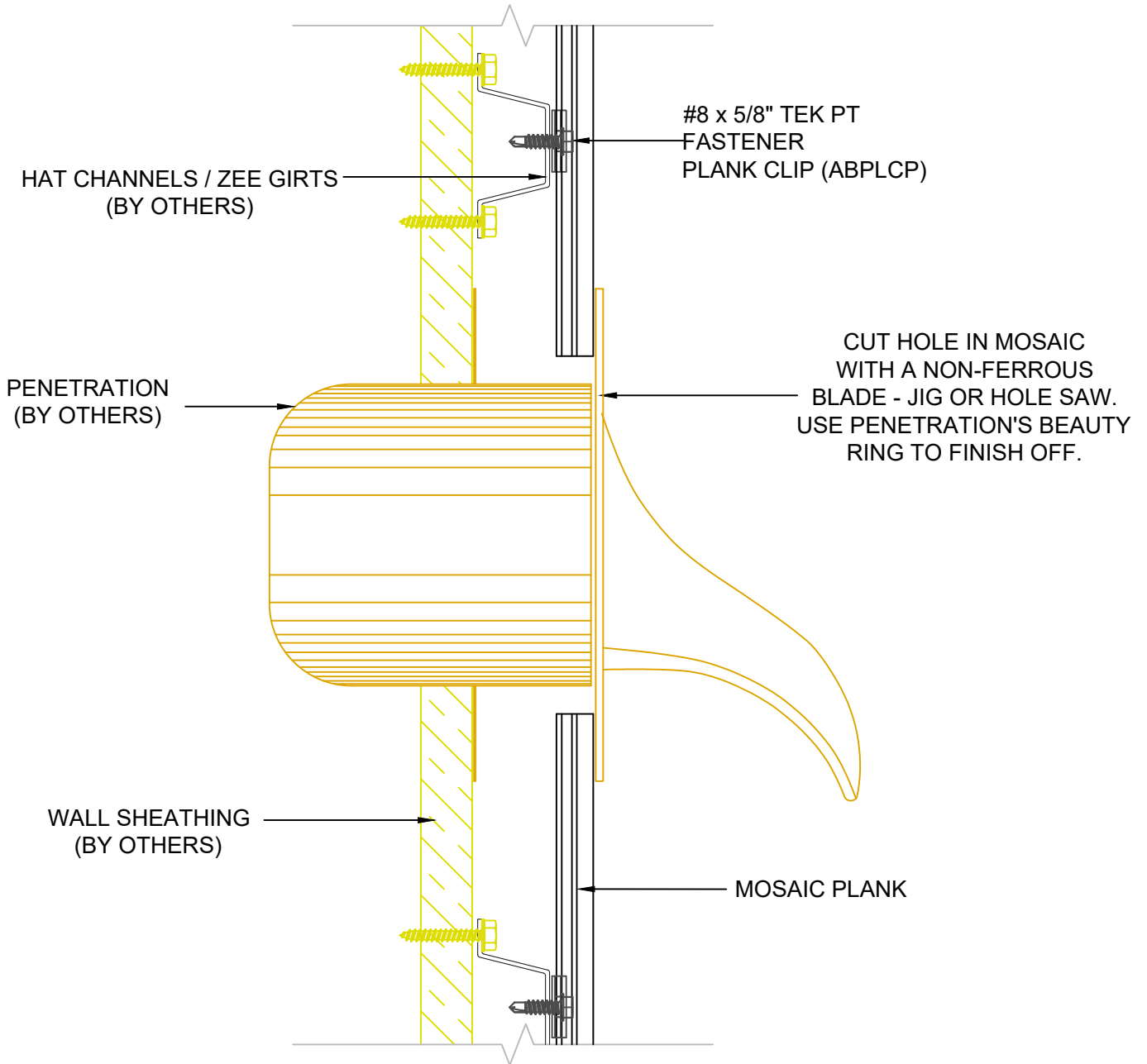
SYSTEM = MOSAIC

407

****ALL DETAILS SHOW MOSAIC ATTACHED TO HAT CHANNELS OVER SOLID SUBSTRATE****
****REFERENCE LOAD SPAN TABLES FOR ALL ATTACHMENT TYPES, ANCHOR TYPES, & ANCHOR SPACING****

INSTALLATION OPTIONS ARE:

- 1) OPEN FRAMING - WOOD OR METAL STUDS
- 2) WOOD SHEATHING
- 3) HAT CHANNEL OVER SHEATHING WITHOUT OR WITH A *VAPOR BARRIER (*RECOMMENDED FOR WALLS)



2529 W. Jackson St.
Phoenix, AZ 85298
PHONE: (602) 275-1676
FAX: (602) 275-1739

COW TONGUE PENETRATION (1)

SCALE: NTS

10/25/23

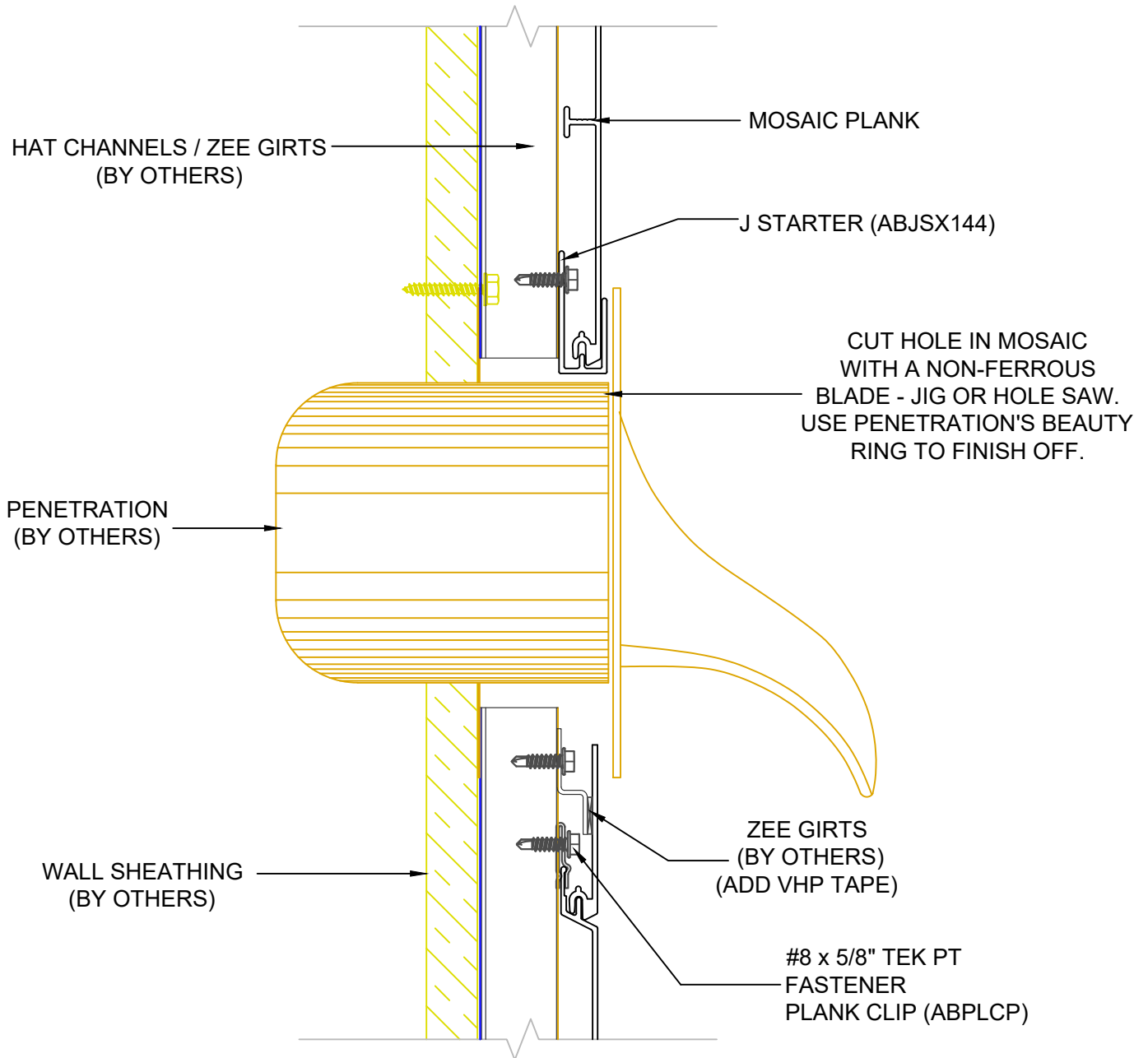
SYSTEM = MOSAIC

408

****ALL DETAILS SHOW MOSAIC ATTACHED TO HAT CHANNELS OVER SOLID SUBSTRATE****
****REFERENCE LOAD SPAN TABLES FOR ALL ATTACHMENT TYPES, ANCHOR TYPES, & ANCHOR SPACING****

INSTALLATION OPTIONS ARE:

- 1) OPEN FRAMING - WOOD OR METAL STUDS
- 2) WOOD SHEATHING
- 3) HAT CHANNEL OVER SHEATHING WITHOUT OR WITH A *VAPOR BARRIER (*RECOMMENDED FOR WALLS)



2529 W. Jackson St.
 Phoenix, AZ 85298
 PHONE: (602) 275-1676
 FAX: (602) 275-1739

COW TONGUE PENETRATION (2)

409

SCALE: NTS

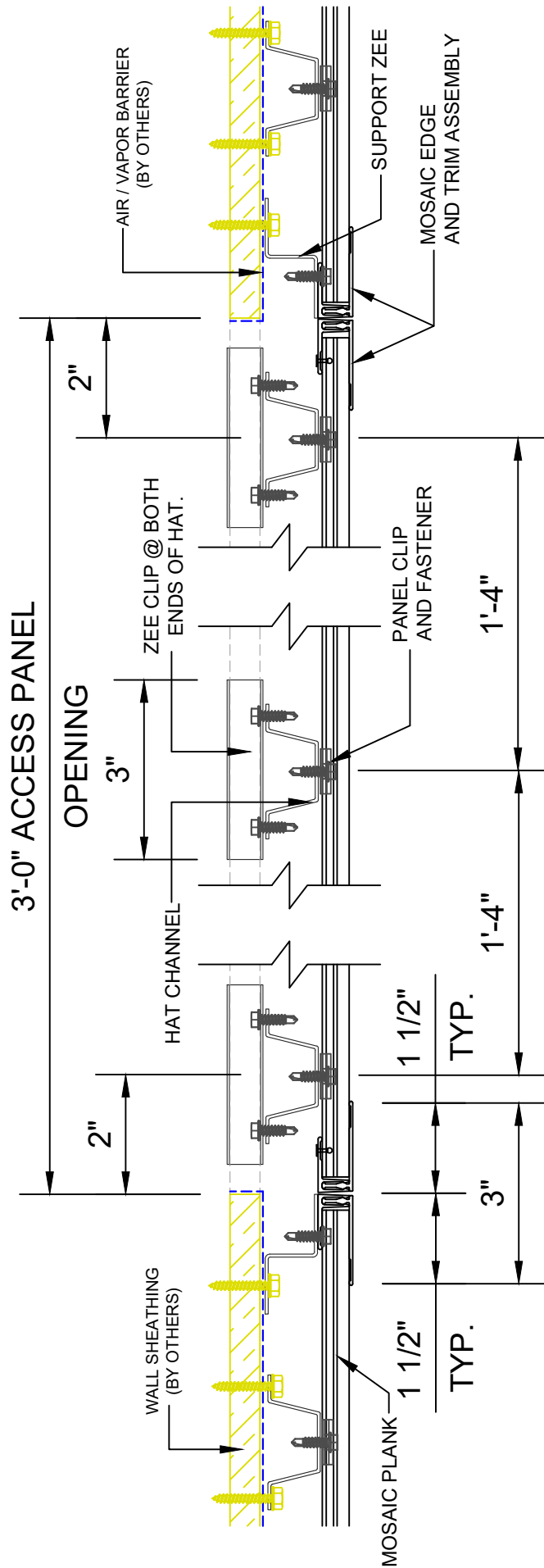
10/25/23

SYSTEM = MOSAIC

ALL DETAILS SHOW MOSAIC ATTACHED TO HAT CHANNELS OVER SOLID SUBSTRATE
 REFERENCE LOAD SPAN TABLES FOR ALL ATTACHMENT TYPES, ANCHOR TYPES, & ANCHOR SPACING

INSTALLATION OPTIONS ARE:

- 1) OPEN FRAMING - WOOD OR METAL STUDS
- 2) WOOD SHEATHING
- 3) HAT CHANNEL OVER SHEATHING WITHOUT OR WITH A *VAPOR BARRIER (*RECOMMENDED FOR WALLS)



2529 W. Jackson St.
 Phoenix, AZ 85298
 PHONE: (602) 275-1676
 FAX: (602) 275-1739

MOSAIC ACCESS PANEL

SCALE: NTS

10/25/23

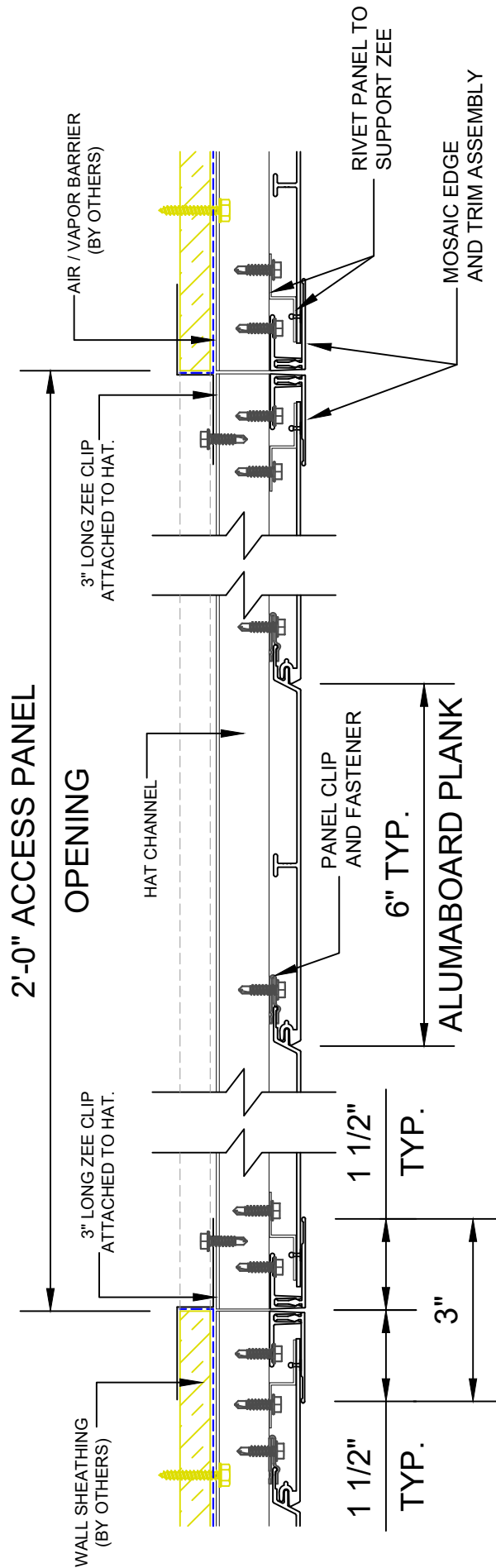
SYSTEM = MOSAIC

410

ALL DETAILS SHOW MOSAIC ATTACHED TO HAT CHANNELS OVER SOLID SUBSTRATE
 REFERENCE LOAD SPAN TABLES FOR ALL ATTACHMENT TYPES, ANCHOR TYPES, & ANCHOR SPACING

INSTALLATION OPTIONS ARE:

- 1) OPEN FRAMING - WOOD OR METAL STUDS
- 2) WOOD SHEATHING
- 3) HAT CHANNEL OVER SHEATHING WITHOUT OR WITH A *VAPOR BARRIER (*RECOMMENDED FOR WALLS)



2529 W. Jackson St.
 Phoenix, AZ 85298
 PHONE: (602) 275-1676
 FAX: (602) 275-1739

MOSAIC ACCESS PANEL

SCALE: NTS

10/25/23

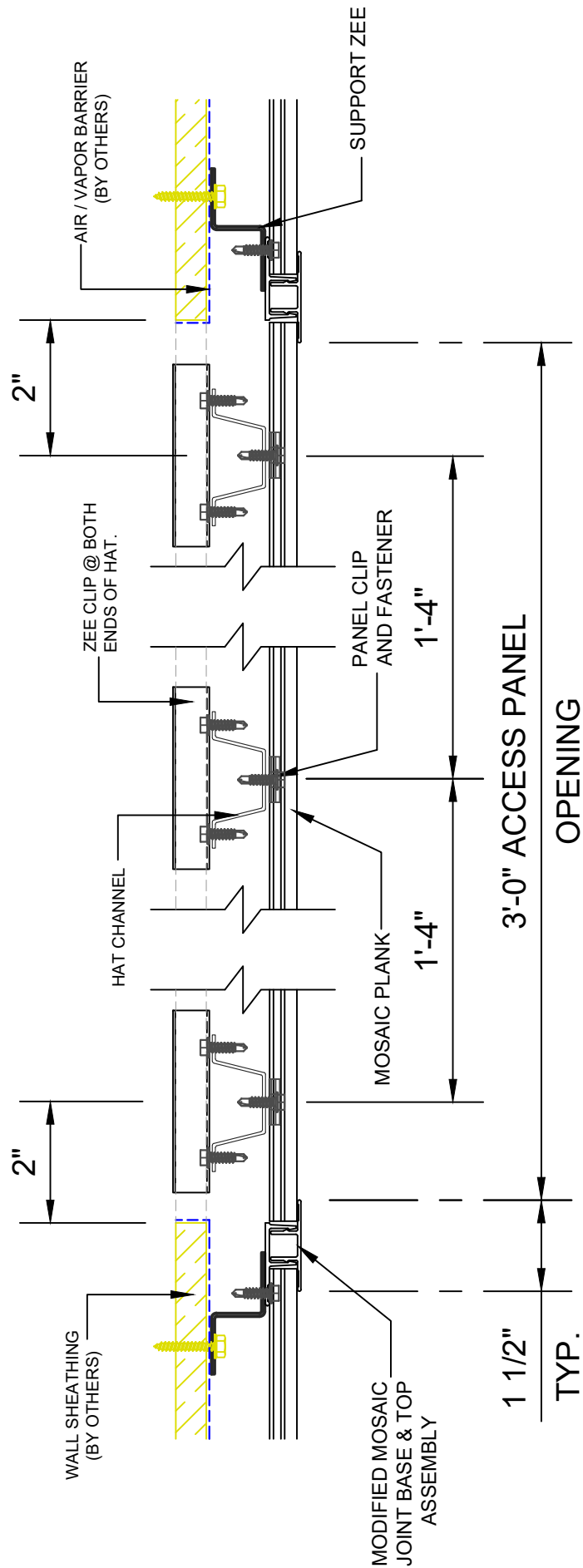
SYSTEM = MOSAIC

411

ALL DETAILS SHOW MOSAIC ATTACHED TO HAT CHANNELS OVER SOLID SUBSTRATE
 REFERENCE LOAD SPAN TABLES FOR ALL ATTACHMENT TYPES, ANCHOR TYPES, & ANCHOR SPACING

INSTALLATION OPTIONS ARE:

- 1) OPEN FRAMING - WOOD OR METAL STUDS
- 2) WOOD SHEATHING
- 3) HAT CHANNEL OVER SHEATHING WITHOUT OR WITH A *VAPOR BARRIER (*RECOMMENDED FOR WALLS)



2529 W. Jackson St.
 Phoenix, AZ 85298
 PHONE: (602) 275-1676
 FAX: (602) 275-1739

MOSAIC ACCESS PANEL

412

SCALE: NTS

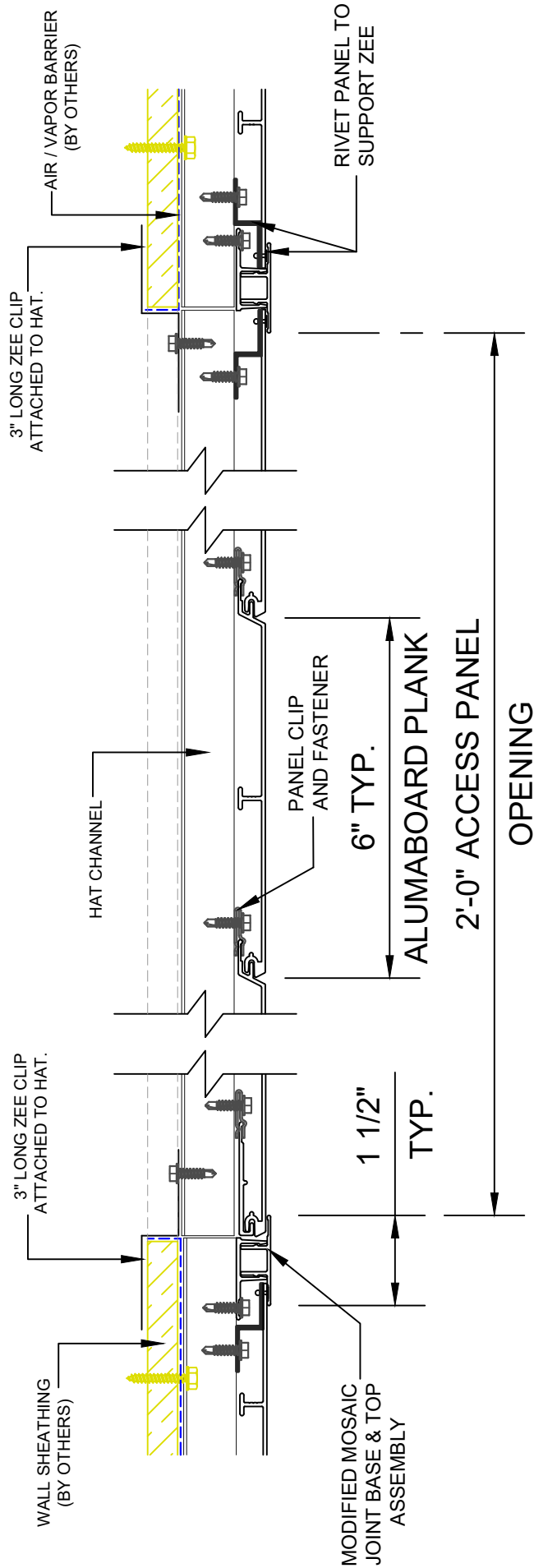
10/25/23

SYSTEM = MOSAIC

****ALL DETAILS SHOW MOSAIC ATTACHED TO HAT CHANNELS OVER SOLID SUBSTRATE****
****REFERENCE LOAD SPAN TABLES FOR ALL ATTACHMENT TYPES, ANCHOR TYPES, & ANCHOR SPACING****

INSTALLATION OPTIONS ARE:

- 1) OPEN FRAMING - WOOD OR METAL STUDS
- 2) WOOD SHEATHING
- 3) HAT CHANNEL OVER SHEATHING WITHOUT OR WITH A *VAPOR BARRIER (*RECOMMENDED FOR WALLS)



2529 W. Jackson St.
 Phoenix, AZ 85298
 PHONE: (602) 275-1676
 FAX: (602) 275-1739

MOSAIC ACCESS PANEL

413

SCALE: NTS

10/25/23

SYSTEM = MOSAIC



Design Guidelines



Luma*built*



The instructions in the Design Guidelines are strictly for illustration purposes and may not be applicable to all building designs or product installations. All projects should conform to applicable building codes for that area. It is recommended to follow all building regulations and standard industry practices. Lumabuilt reserves the right to modify, without notice, any details, recommendations, or suggestions contain heir in.

It is recommended that Mosaic is to be installed by a professional erector who is specifically experienced with the installation of aluminum soffits and siding materials and who utilizes the correct practices and techniques to safely and properly handle any equipment and materials required to complete the installation of this product.

Mosaic has a durable, yet unique wood grain/solid color powder coating applied to it which must be handled, cut, and installed in an appropriate manner as to not damage the finish.



DESIGN DETERMINATION

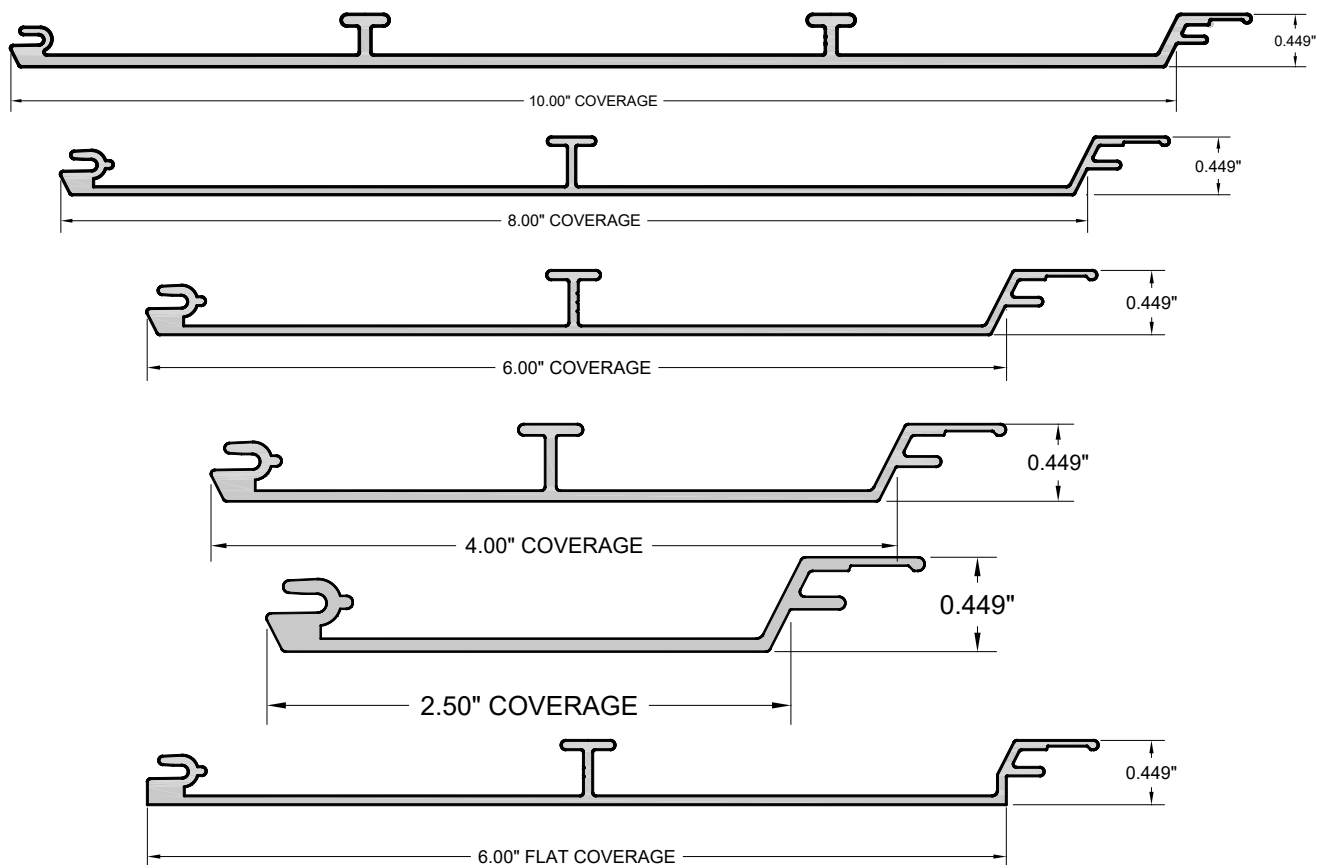
As you work through the design process it is important to plan the overall layout of the installation. Consult the architectural drawings to aid you in the intended finished look. At this time, you must define several items that will impact the finished look of your installation.

PLANK DIRECTION CONSIDERATIONS

- The direction of the planks is very comparable to the requirements for the plank supports. How will you make the required panel attachments?
- Will additional framing be required?
- Plank layout needs to be balanced from edge to edge. Define the desired look (what is the focal point)
- Penetrations and the impact of them should be taken into consideration; (doors, windows, lighting, fire sprinklers, access panels, signage etc.).

PANEL END JOINT LAYOUTS

- Minimizing the joints is the best practice (thermal movement happens)
- If area and size allow, no exposed panel end joints are best
- Panel end joint trims can be used to conceal joints and cut edges
- Panel end joints can be staggered to present an effect (Wood grains will be interrupted)
- Panel end joints can be aligned to present an effect (Wood grains will be interrupted)

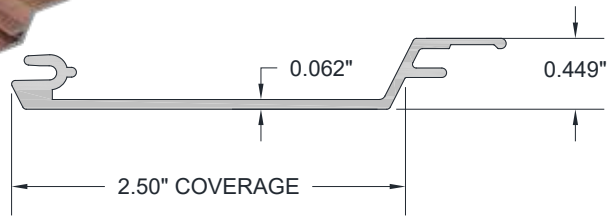




PLANKS & PLANK CLIP



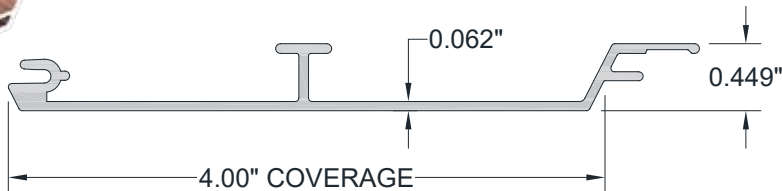
2.5" V-GROOVE PLANK



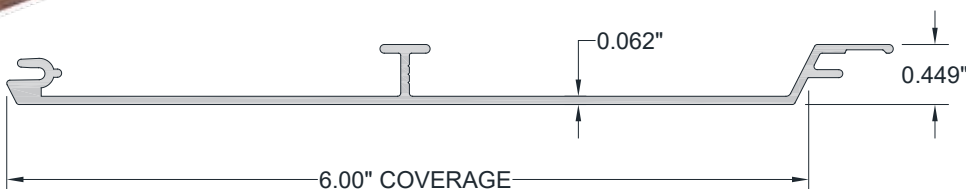
3/4" long stainless steel clips - allows for thermal expansion.



4" V-GROOVE PLANK

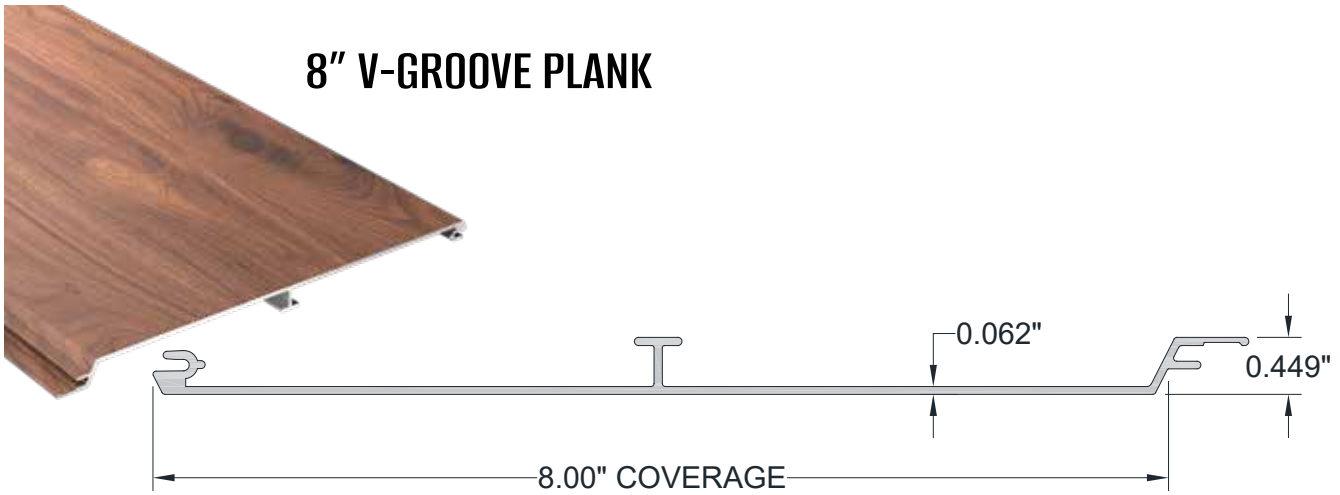


6" V-GROOVE PLANK

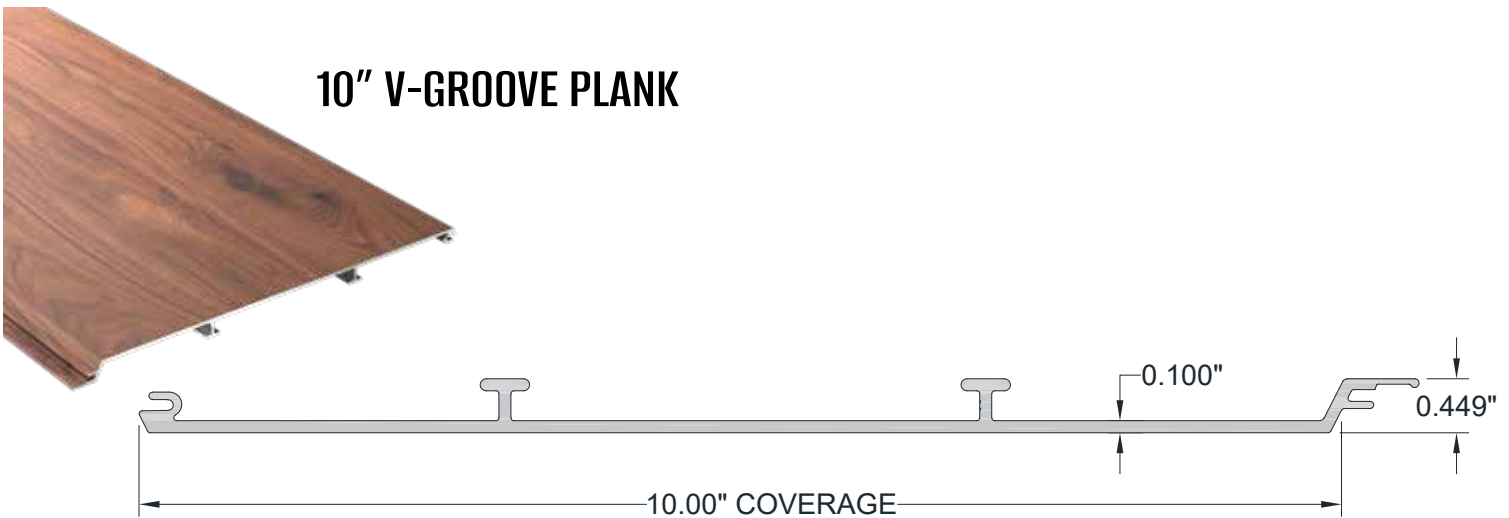


PLANKS & PLANK CLIP

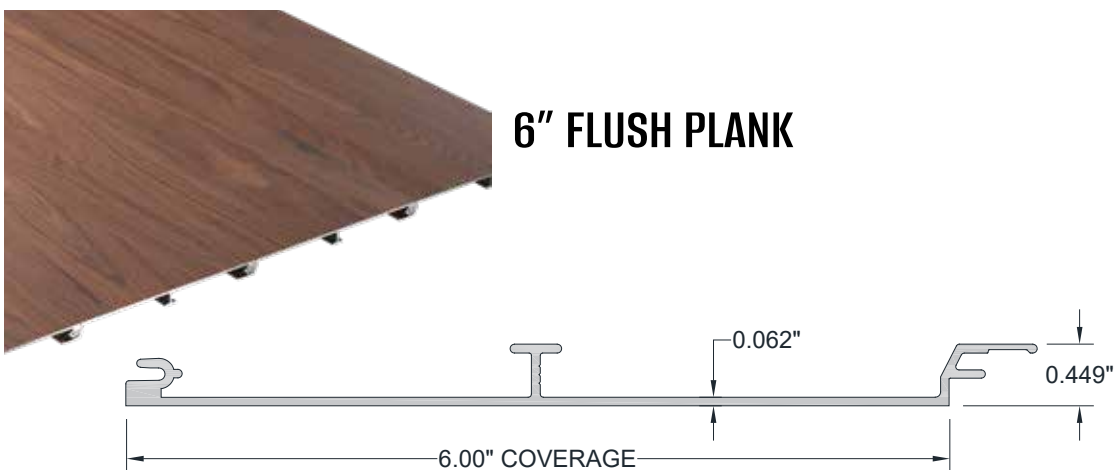
8" V-GROOVE PLANK



10" V-GROOVE PLANK



6" FLUSH PLANK





WOOD GRAIN VARIATIONS

Wood grain patterns offer a natural variation to simulate a wood product.

- Patterns will vary within the width and length of the part
- Patterns will repeat over a certain distance on a part

To ensure the best aesthetic desired look, you must layout the materials on a surface large enough to identify the finish variations prior to install. Make product adjustments to each area by moving the planks to other locations to achieve the desired look.

Trim wood grains will vary on the trims like the planks. You must ensure the trim wood grains provide you the desired look at time of layout. You can control this look by selecting another trim part or shifting its location within the layout.

SUB-FRAMING REQUIREMENTS - Mosaic planks can be installed over a solid surface provided it meets the flatness and attachment criteria. They can also be installed over open framing or furring (hat channels) to aid in achieving a flat surface.

DRY-IN - Mosaic is a rain-screen system. If your application requires a watertight result, you must prepare your substrate with the proper underlayment's to meet the desired results.

FACTORY PLANK ENDS - Mosaic is a nominal 24' long plank. Due to production limitations your installation may require a fresh cut at one end, or both ends of each plank to meet the aesthetic values of the install. Please ensure you plan for the fresh cut in your measuring prior to final cuts.

TOUCH UP CUT ENDS - As you perform the install element of each project you may find the need to darken the fresh cut ends of the planks and the trim elements. Lumabuilt offers two colored touch pens for this use (Dark and Light Brown). The application is best used to select the closest color to your project. If neither color is a match, then you may mix to a desired consistency to best fit your application.

CUSTOM TRIM PARTS - Lumabuilt offers a complete trim package for this system. However, at times the design may require a special size or shape of trim. We offer the ability to fabricate .050 aluminum custom trim shapes and apply the same finish to match the system.



UNDERSTANDING EXPANSION & CONTRACTION

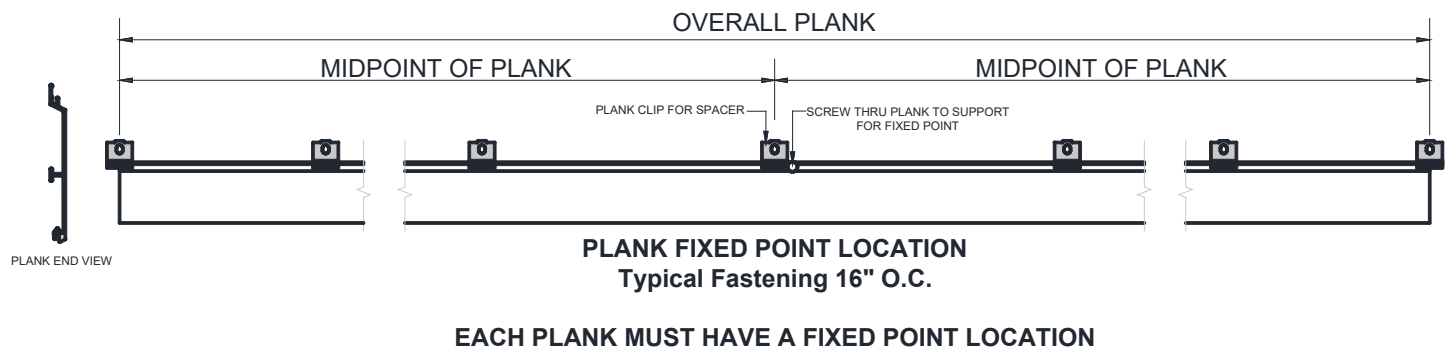
The expansion coefficient for aluminum will cause thermal movement over the length of each plank: ($\frac{3}{16}$ " inch over 24' feet) per 100° fahrenheit of temperature change. Panel attachment locations are critical to direct the panel movement to be concealed in a successful installation. Mosaic is installed utilizing a stainless-steel floating panel clip. This allows for panel movement during thermal changes.

The planks will both expand and contract by the same amount. Mosaic should be installed so that the end of the plank is at the midpoint in the trim components. This will allow for the plank to both expand and contract without being constrained by the trim pieces.

Do not fasten Mosaic planks to the trim components as this will inhibit thermal movement.

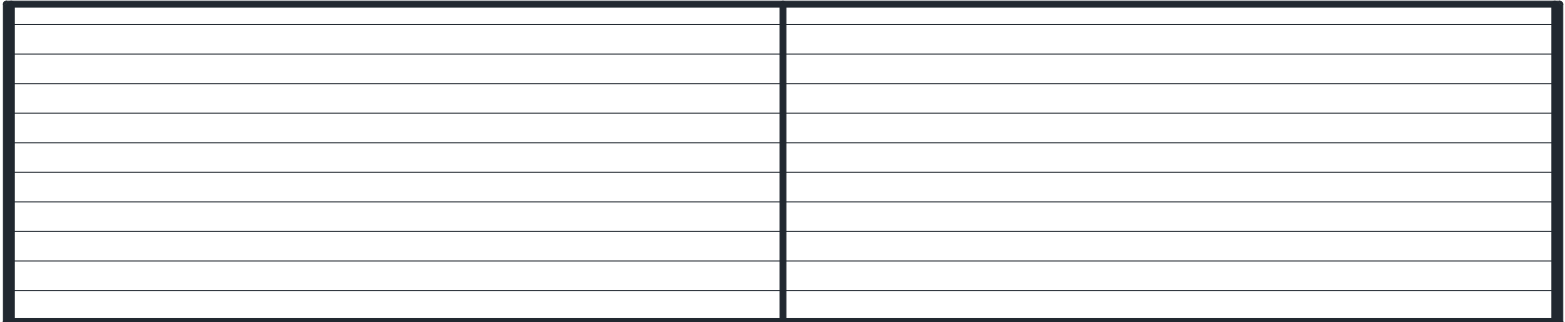
TYPICAL SINGLE 24' LONG PLANK ATTACHMENT:

Plank clips and fasteners are to be installed at 16" on center (review load span tables to confirm spacing). A fixed point is required for each plank, best located at the midpoint of the plank. One fastener should be installed at the plank's midpoint directly through the clip attachment surface to provide a fixed attachment and prevent plank migration to the left or right.



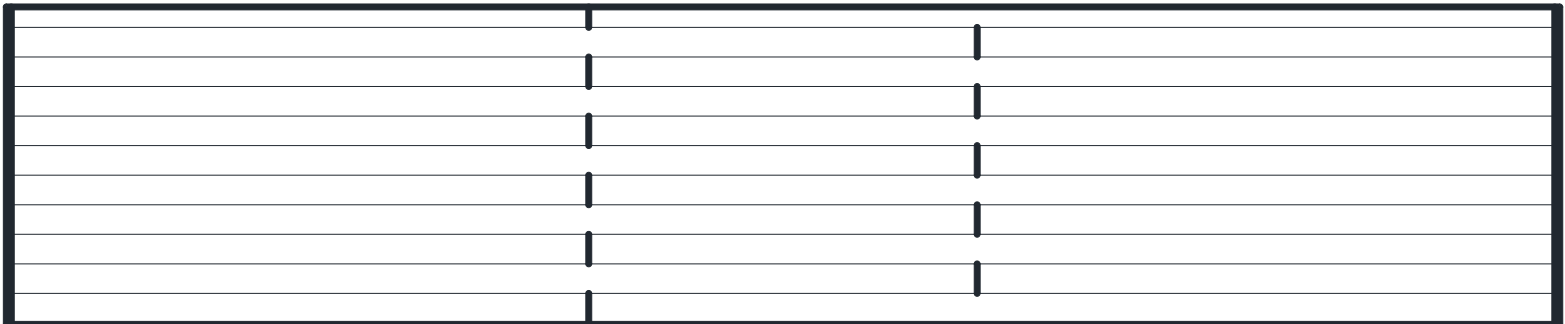


PLANK LAYOUT OPTIONS



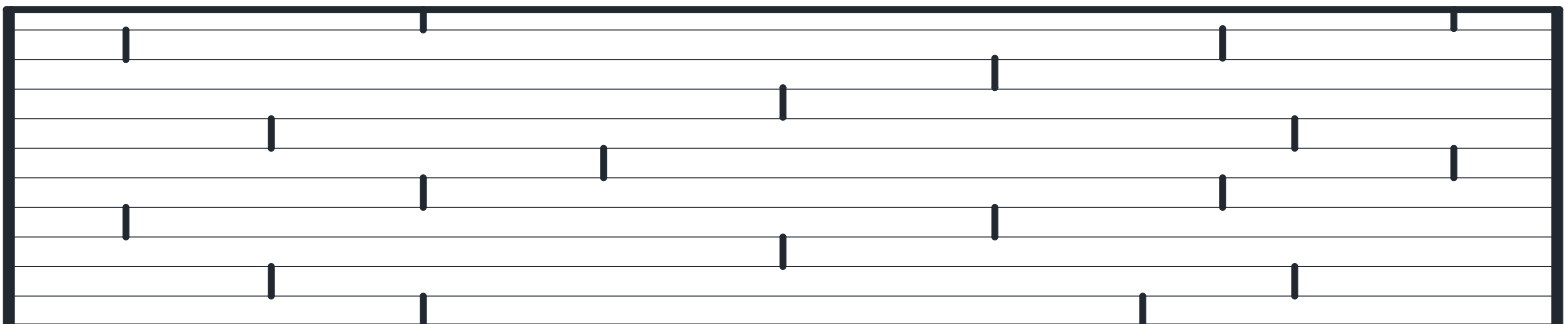
LAYOUT 24' LONG PLANKS
JOINTS ALIGNED AT 24'

(6" PLANKS SHOWN IN A 40' LONG RUN)



STAGGERED JOINT LAYOUT 24' LONG PLANKS
STAGGERED JOINT

(6" PLANKS SHOWN IN A 40' LONG RUN)

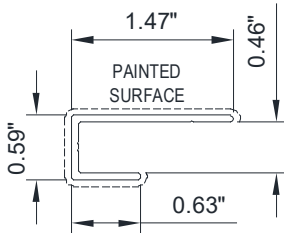


RUNNING BOND LAYOUT 24' LONG PLANKS
STAGGERED JOINT 4'

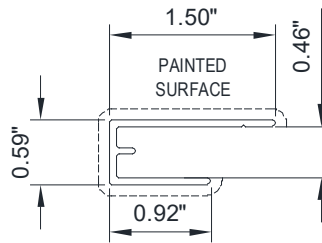
(6" PLANKS SHOWN IN A 40' LONG RUN)



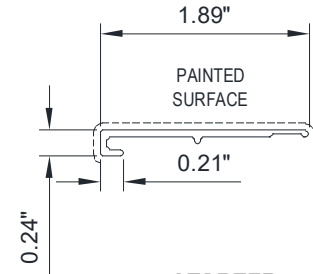
TRIM PROFILES



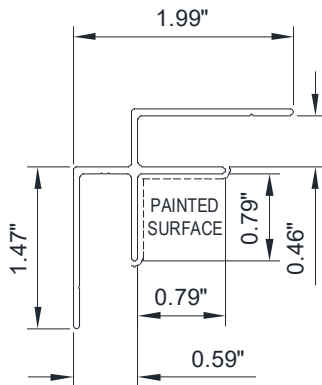
J CLOSURE



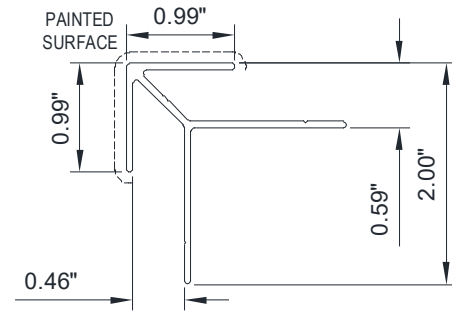
J STARTER



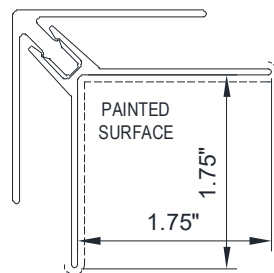
STARTER



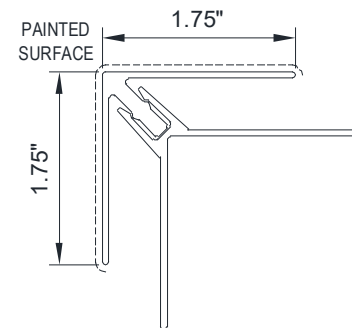
INSIDE CORNER



OUTSIDE CORNER



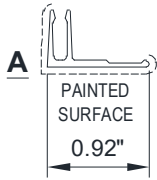
2 PC INSIDE CORNER



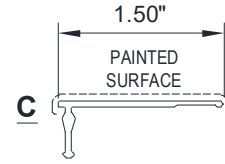
2 PC OUTSIDE CORNER



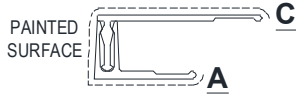
TRIM PROFILES



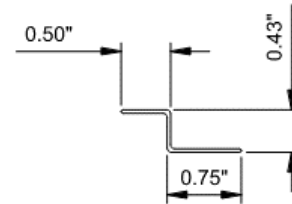
EDGE BASE



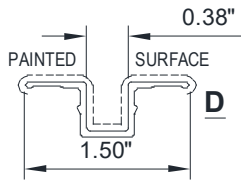
EDGE TOP



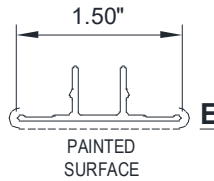
EDGE BASE & TOP ASSEMBLY



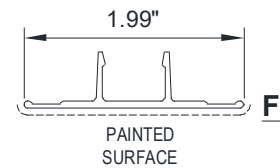
ZEE SUPPORT



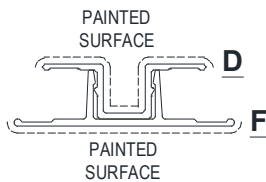
JOINT TOP REVEAL



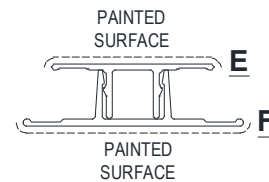
JOINT TOP



JOINT BASE



JOINT BASE & TOP REVEAL ASSEMBLY



JOINT BASE & TOP ASSEMBLY



TRIM APPLICATION

Prior to panel installation it is required to understand the best applications for the trims. Trim components are sold in 12' lengths only, they are intended to be field cut to fit each specific application. Using a square cut or miter cut you can complete the layout appearance you desire. You can use the trim to cover the ends of each plank. Additionally, you can use the trim to create a element of design. The main purpose for the trim components is to provide for the thermal expansion and cover the necessary field cuts to the planks.



STARTER - Used at the starting point of installation, generally this is a bare finish extruded aluminum part designed to hold the non-clip leg of the panel in place. This part will need to be installed prior to planks. This is to be used in a continuous manner.



J- CLOSURE - Is a universal part designed to have the plank slid into its shape. This can be used parallel or perpendicular to the plank. This part is finished to match the planks.



J-STARTER -Is a universal part designed to have the plank slid into its shape specifically used to replace the need for a stand alone starter and J-closure combination. This can be used parallel or perpendicular to the plank. This part is finished to match the planks.



TRIM PROFILES



EDGE ASSEMBLY TERMINATION - This is two-part trim element to be used at the edge or perimeter of the planks. The base trim will need to be installed prior to the plank installation. When the planks are completely installed you then can insert in the top part of the assembly. Both parts are finished to match the planks.

Special Instructions: this assembly can be reversed in the installation to accommodate an alternate face dimension width.



JOINT ASSEMBLY - This is two-part trim element to be used when you need to bring two ends of planks together. This can be at any angle (Directional Transitions, Miters etc.). The base trim will need to be installed prior to the plank installation. When the planks are completely installed you then can insert in the top part of the assembly. Both parts are finished to match the planks.

Special Instructions: this assembly can be reversed in the installation to accommodate an alternate face dimension width.



JOINT ASSEMBLY REVEAL - This is two-part trim element to be used when you need to bring two ends of planks together. This can be at any angle (directional transitions, miters etc.). The base trim will need to be installed prior to the plank installation. When the planks are completely installed you then can insert in the top part of the assembly. Both parts are finished to match the planks.



OUTSIDE CORNER - This trim is to be used at any application you need to turn a 90-degree corner. This part will need to be installed prior to the planks. This part is finished to match the planks.

TRIM PROFILES



INSIDE CORNER - This trim is to be used at any application you need to turn a 90-degree corner. This part will need to be installed prior to the planks. This part is finished to match the planks.



2 PIECE INSIDE /OUTSIDE CORNER ASSEMBLY - This trim is to be used at any application you need to turn a 90-degree corner. This part will need to be installed prior to the planks. This part is finished to match the planks.



ZEE SUPPORT - This concealed trim element is used with a rip cut plank at a termination condition. This part will be installed prior to the planks at the termination trim piece. A piece of VHB tape (3M 4905 or Equivalent - purchased separately) will secure the termination plank to the zee support piece.





Lumabuilt offers a complete set of details to clarify and define the many options for each trim combination for your application. All the latest details are available on the website Lumabuilt.com.

WALL AND SOFFIT APPLICATION DETAILS

- Installation over open framing or solid surface
- Panel joint applications
- Termination conditions
- Penetrations
- Venting options
- Access panel

CALCULATING MATERIAL USAGE - Material take offs and quoted quantities were originally based on the layout from either the architectural drawings or the physical project requirements, you may see the need for changes as you define your plank layout and trim. *You should always include the necessary extra material to your order to accommodate any unforeseen circumstances. Installing the material in a pattern other than what has been predetermined at time of order may result in material shortages.*

NOTE: materials are sold in standard sizes

Planks 4" 6", 8" and 10" wide are available in 12'-0" or 24'-0" long. Based on each area of plank and the desired layout ensure you plan to utilize your material drop.

All trims are 12'-0" long

All .050 custom flashings are 10'-0" long

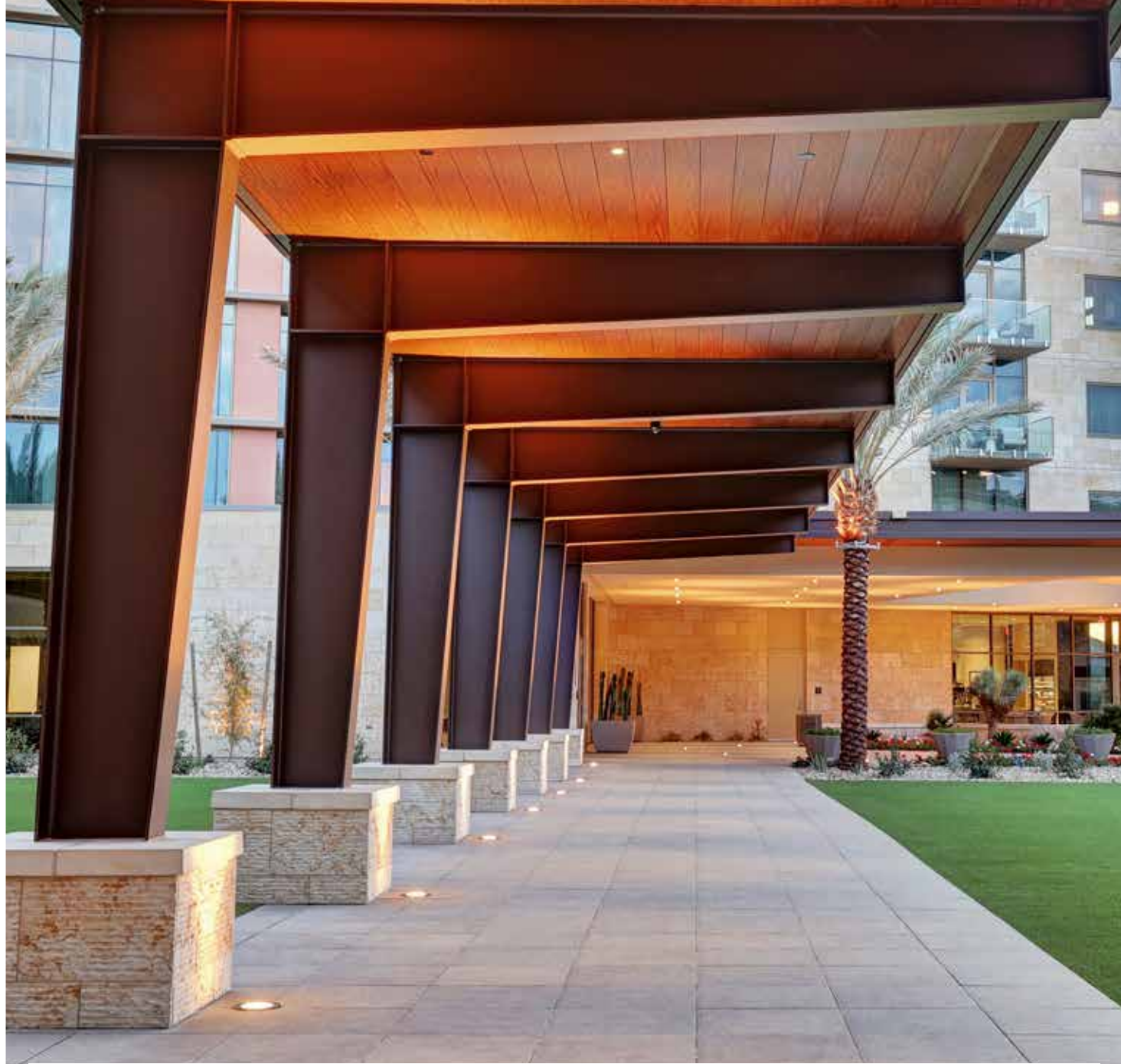
For best results the trim should utilize full length pieces as often as you can. It is not recommended to use a series of short trim pieces to complete an area that would be best served with a full-length part.





Lumabuilt

Design Guidelines



Lumabuilt

2529 W. Jackson St. | Phoenix, AZ 85009
602.275.1676 | Info@Lumabuilt.com
For more info visit: Lumabuilt.com

LB23-062 ©2023 Lumabuilt. All Rights Reserved. Revised 05.03.2024





Lumabuilt

Mosaic

Planks and Battens

THE USE OF LUMABUILT PRODUCTS MAY CONTRIBUTE TO THE LEED CREDITS

Lumabuilt produces and supplies aluminum extruded products for our valued customers made from both primary and secondary 6XXX series aluminum alloys. In total, approximately 40% of our extruded products are produced with recycled secondary aluminum (32% being post-consumer content and 8% being from pre-consumer content); this material is received and recycled by local suppliers. The remaining percentage of our production is processed from primary billet which typically contains 3 - 5% recycled aluminum. All of Lumabuilt's end aluminum products are 100% recyclable with no downgrading of the material qualities.



THE USE OF LUMABUILT PRODUCTS MAY CONTRIBUTE TO THE LEED CREDITS

Lumabuilt LEED v4 Exterior Systems Summary

LEED CREDIT	DESCRIPTION	POINTS
MR2.1 and 2.2: Construction waste management	Aluminum recycling	1-2 points
MR4.1 and 4.2: Recycled Content	Recycled content in aluminum extrusions	1-2 points
MR5.1 and 5.2: Regional Materials	Recycled content recovered, reprocessed near project	1-2 points
ID1: Innovation in Design	For use of Cradle-to-Cradle certified materials	1 point

Lumabuilt (RMP Architectural Products)
2529 W. Jackson St. | Phoenix, AZ 85009
602.275.1676 | Info@Lumabuilt.com
For more info visit: Lumabuilt.com



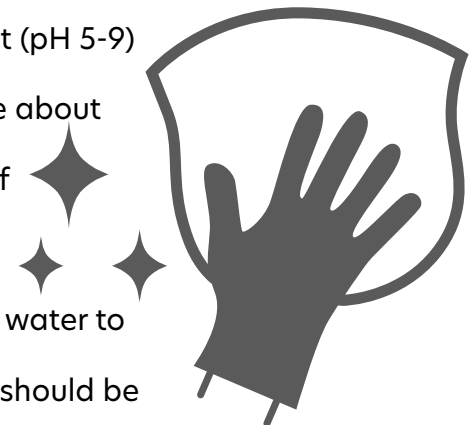


CLEANING INSTRUCTIONS FOR SOFFIT AND SIDING

To preserve the original beauty of Mosaic (Alumaboard) products a regular cleaning schedule is required with the warranties. General surface cleaning will prevent dirt and other particles from accumulating. These build-ups and deposits take away from the original beauty of Mosaic (Alumaboard) Products.

After installation you will need to thoroughly clean your Mosaic (Alumaboard) products to remove all construction elements that may have accumulated.

- Clean the finish surface with water and a soft cloth or sponge until it is free of debris. Avoid excessive rubbing as this will alter the finish.
- If required the finish surface may be also cleaned with a mild detergent (pH 5-9) or a cleaning agent diluted to 1:50 parts of water.
- Certain cleaning agents may damage the paint finish. If you are unsure about possibly damaging the surface, do a spot test on an area that is not easily visible. If the solution causes any damage or changes the look of the paint finish or gloss, immediately discontinue use.
- Always observe the recommended safety precautions including appropriate skin and eye protection to prevent irritations or burns.
- After each cleaning occurs, the surface must thoroughly be rinsed with water to remove any cleaner residue.
- To minimize the appearance of water spots and streaking, the surface should be wiped dry with a clean, soft, dry cloth.



LUMABUILT RECOMMENDED CLEANING SCHEDULE

Active Construction Site	Monthly
Industrial Area	Quarterly
Pools	Quarterly
Coastal Areas	Quarterly
Tropical Areas	Bi-Yearly
All Other Areas	Yearly

CAUTION

- Do NOT use a pressure washer.
- Do NOT use steel wool, abrasive pads or dirty rags.
- Do NOT use acetone, paint thinner or any type of stripper/remover.
- Do NOT use highly acidic or alkaline solutions of any kind especially any that react with metal.
- Do NOT clean in freezing temperatures or in extreme heat.



MAINTENANCE LOG

DATE	CLEANING PRODUCT	MAINTENANCE COMPANY	MAINTENANCE PERSON	INSPECTOR SIGNATURE



MOSAIC (ALUMABOARD) PRODUCT WARRANTY

15 YEAR FINISH WARRANTY

To: (OWNER)

From: LUMABUILT

Project Name and Location: (PROJECT NAME
(STREET NUMBER & NAME)
(CITY, STATE ZIP)

Commencement Date of Warranty: (Date is Required)

LUMABUILT hereby warrants to the Customer that the MOSAIC (ALUMABOARD) line of products supplied by LUMABUILT to the Customer pursuant to the order placed by Customer and accepted by LUMABUILT are, at the time of shipment, free from manufacturing defects.

When soffits and siding are applied according to the MOSAIC (ALUMABOARD) Installation instructions and properly maintained, such product is guaranteed against the following:

A. Aluminum Materials and workmanship, within the warranty period of Fifty (50) years.

1. **Buckling:** The product itself will be free of any buckling that is not associated with the substrate and/or structure to which the MOSAIC (ALUMABOARD) system is attached. Buckling shall be defined as warping of the product(s) exceeding one sixteenth of an inch out of plane per linear foot, for the purpose of this warranty.
2. **Rusting and Corrosion:** When applied according to LUMABUILT instructions and properly maintained per LUMABUILT guidelines, MOSAIC (ALUMABOARD) products are guaranteed against rusting and corrosion, subject to the limitations set out in section C.
3. **LUMABUILT Responsibility:** If, within the Limited Warranty Period, the Product(s) are defective in material or workmanship, LUMABUILT will; at its sole discretion; either repair or replace the defective portion of the Product(s), or, during the first 1st through the 50th year, LUMABUILT will reimburse the Covered Party for the original retail cost of the defective portion of the MOSAIC (ALUMABOARD) Product(s). Upon the 51st year, from the original retail sales date, this Limited Warranty will expire and shall no longer be applicable. If the original retail cost cannot be established by the Covered Person to LUMABUILT's reasonable satisfaction, the cost value shall be determined by LUMABUILT at its sole and reasonable discretion. LUMABUILT's reimbursement or replacement of the defective



Product(s) covered by this Limited Warranty, are the exclusive remedy for the Covered Party with regards to any defect in materials or workmanship only. LUMABUILT WILL NOT REFUND OR PAY ANY ASSOCIATED COSTS, CHARGES, OR FEES WITH REGARDS TO DELIVERY COST, INSTALLATION LABOR, OR ACCESSORY MATERIALS.

B. Paint Finishes, within the warranty period of Fifteen (15) years.

1. **Checking and Cracking:** There will be no clearly visible checking or cracking of the Painted Finish on the Product(s) installed on the building.
2. **Chalking Resistance:** There will be no chalking of the Painted Finish on the Product(s), installed on the building, in excess of that represented by the “No.8 rating” based on ASTM D4214.
3. **Color Retention:** There will be no color change of the Painted Finish on the building greater than 5 CIE Lab AE units calculated in accordance with ASTM 2244; Section 6.3. Color changes shall be measured on the exposed painted surface which has been cleaned of oil, grease, chalk, oxidized film or other contaminants, corresponding values shall be measured on the original retained batch Product(s) (Product(s) are stored in the dark at temperatures below 30° C).
4. **Gloss Retention:** The coated surface will exhibit gloss retention to a minimum of 30% from the original gloss. Gloss retention shall be measured on the exposed painted surface which has been cleaned of oil, grease, chalk, oxidized film or other contaminants, corresponding values shall be measured on the original retained batch Product(s) (Product(s) are stored in the dark at temperatures below 30° C).
5. **Paint Adhesion:** Adhesion of Painted Finish when initially applied to test panels and measured by reference to AAMA 2604-02; Clause 7.4.2 will show no evidence of film removal.

C. Warranty Terms and Conditions.

1. Registration of the purchased Product(s) is required for this warranty to be in effect. This warranty is valid to the original purchaser and one owner of the structure, where the Product(s) have been installed.
2. “Normal atmospheric conditions” excludes corrosive or aggressive atmospheres such as those contaminated with chemical fumes, salts, or other corrosive elements, including areas within proximity of a body of salt water. LUMABUILT recommends freshwater cleaning and maintenance program(s) be in effect to prevent corrosion from accumulated deposits.
3. The warranty will not extend or cover:
 - a. Damages to the coated metal caused by handling, shipping, processing and/or installation; or
 - b. Damages to the coated metal caused by scratching or abrading after installation; or
 - c. Damages to the coated metal as a result of standing water in horizontal installations.
 - d. The warranty will not be applicable to damage or failure, which is caused by acts of God, falling objects, external forces, explosions, fire, riots, civil commotion’s, acts of war, or other such similar or dissimilar occurrences beyond LUMABUILT’s control.
 - e. Customer shall make available to LUMABUILT the dates of the installation of the coated metal, the maintenance records including details of washing and cleaning procedures in compliance with the annual cleaning requirements as stated in the “Required

LUMABUILT Warranty Number:
Warranty Expiration Date:



Maintenance” section of this warranty. Customers that demonstrate the failure of the coated metal was due to a breach of the warranty stated herein.

- f. Claims must be made in writing to LUMABUILT within 30 days of the discovery of a problem and authorization obtained prior to beginning any repair and/or refinishing work. The claimant must provide proof of coverage. Claims must be made by writing and can be sent to the customer service department at LUMABUILT. After receiving such notice, LUMABUILT must be given a reasonable opportunity to inspect and verify the claim.
- g. LUMABUILT’s exclusive liabilities, under this warranty, or otherwise, will be limited to refinishing and/or repairing, at LUMABUILT’s sole discretion, the defective powder coating. The warranty on any refinished, repaired or replaced coated metal supplied hereunder shall be for the remainder of the warranty period applicable to the originally coated metal. All warranty work will be performed by a company or contractor selected by LUMABUILT. Color variance between refinished and/or repainted product and original shall not be indicative of a defect.

- 6. This warranty represents the entire agreement between all parties in relation to its subject matter and supersedes any previous agreement whether written or oral between the parties in relation to its subject matter. The limited warranties state the entire liability of LUMABUILT with respect to the Product(s) covered by them. LUMABUILT shall have no liability for any incidental or consequential damages. No person is authorized to make any representation or warranty on behalf of LUMABUILT except as expressly set forth above, and any such statement shall not be binding on LUMABUILT except as expressly set forth above. LUMABUILT makes no warranty of any kind, express or implied, including, without limitation, any implied warranty of merchantability or fitness for a particular purpose. Warranties shall be the duration of this limited warranty, or such shorter duration as provided under applicable local law. These limited warranties give you specific legal rights, and you may also have other rights which vary from region to region and state by state.
- 7. NOTHING WITHIN THIS WARRANTY SHALL BE CONSTRUED AS A WARRANTY OF THE WORKMANSHIP OF ANY INSTALLER OR AS IMPOSING ON LUMABUILT ANY LIABILITY FOR UNSATISFACTORY PERFORMANCE CAUSED BY FAULTY WORKMANSHIP BEFORE, DURING, OR AFTER INSTALLATION.
- 8. It is agreed, by all parties involved, that all claims and disputes relating to this agreement, which cannot be settled through negotiation, will try in good faith to first settle the dispute by mediation administered by the American Arbitration Association (Construction Industry Mediation Procedures) as a prelude to mandatory binding arbitration. Such binding arbitration is to be conducted and administered by the Construction Industry Arbitration Rules of the American Arbitration Association. Both seller and purchaser agree to share equally in the costs of both mediation and arbitration and that such binding arbitration will be the sole and final remedial action.

D. Required Maintenance.

On a semi-annual basis, use a soft sponge or cloth with water and mild detergent or a non-abrasive soap with the pH range of 5-9 to clean the powder coated area of dirt, grime and other debris. Pressure washing and the use of harsh detergents or chemicals is not recommended and may void this warranty. Include in your maintenance records the following: date, time, specific products used, name of maintenance person and their designation, maintenance company name and observed general condition of the powder coated finish.



Lumabuilt

Mosaic
Alumaboard

All notice given under or pursuant to this warranty shall be in writing in English and sent by Registered or Certified Mail, postage prepaid, return receipt requested to:

LUMABUILT
2529 West Jackson Street
Phoenix, Arizona 85009

Seller:

LUMABUILT

2529 West Jackson Street

Phoenix, AZ 85009

LUMABUILT Representative Signature

Printed Name Date

Customer:

Customer Signature

Printed Name Date



MOSAIC (MOSAIC (ALUMABOARD)) PRODUCT WARRANTY

20 YEAR FINISH WARRANTY

To: (OWNER)

From: LUMABUILT

Project Name and Location: (PROJECT NAME
(STREET NUMBER & NAME)
(CITY, STATE ZIP)

Commencement Date of Warranty: (Date is Required)

LUMABUILT hereby warrants to the Customer that the MOSAIC (ALUMABOARD) line of products supplied by LUMABUILT to Customer pursuant to the order placed by Customer and accepted by LUMABUILT are, at the time of shipment, free from manufacturing defects.

When soffits and siding are applied according to the MOSAIC (ALUMABOARD) Installation instructions and properly maintained, such product is guaranteed against the following:

Aluminum Materials and workmanship, within the warranty period of Fifty (50) years.

Buckling: The product itself will be free of any buckling that is not associated with the substrate and/or structure to which the MOSAIC (ALUMABOARD) system is attached. Buckling shall be defined as warping of the product(s) exceeding one sixteenth of an inch out of plane per linear foot, for the purpose of this warranty.

Rusting and Corrosion: When applied according to LUMABUILT instructions and properly maintained per LUMABUILT guidelines, MOSAIC (ALUMABOARD) products are guaranteed against rusting and corrosion, subject to the limitations set out in section C.

LUMABUILT Responsibility: If, within the Limited Warranty Period, the Product(s) are defective in material or workmanship, LUMABUILT will, at its sole discretion; either repair or replace the defective portion of the Product(s), or, during the first 1st through the 50th year, LUMABUILT will reimburse the Covered Party for the original retail cost of the defective portion of the MOSAIC (ALUMABOARD) Product(s). Upon the 51st year, from the original retail sales date, this Limited Warranty will expire and shall no longer be applicable. If the original retail cost cannot be established by the Covered Person to LUMABUILT's reasonable satisfaction, the cost value shall be determined by LUMABUILT at its sole and reasonable discretion. LUMABUILT's reimbursement or replacement of the defective Product(s)

<p>LUMABUILT Warranty Number: Warranty Expiration Date:</p>	<p>Page 1</p>
---	---------------



covered by this Limited Warranty, are the exclusive remedy for the Covered Party with regards to any defect in materials or workmanship only. LUMABUILT WILL NOT REFUND OR PAY ANY ASSOCIATED COSTS, CHARGES, OR FEES WITH REGARDS TO DELIVERY COST, INSTALLATION LABOR, OR ACCESSORY MATERIALS.

Paint Finishes, within the warranty period of Twenty (20) years.

Checking and Cracking: There will be no clearly visible checking or cracking of the Painted Finish on the Product(s) installed on the building.

Chalking Resistance: There will be no chalking of the Painted Finish on the Product(s), installed on the building, in excess of that represented by the “No.8 rating” based on ASTM D4214 test method A.

Color Retention: There will be no color change of the Painted Finish on the building greater than 5 ΔE units as measured by Hunter Lab color difference as set forth per AAMA 2604 specifications as of the application date and in such way as to significantly adversely affect the appearance of the surface to which the product has been applied and result in damage to the surface. Color changes shall be measured on the exposed painted surface which has been cleaned of oil, grease, chalk, oxidized film or other contaminants, corresponding values shall be measured on the original retained batch Product(s) (Product(s) are stored in the dark at temperatures below 30° C).

Gloss Retention: The coated surface will exhibit gloss retention to a minimum of 30% from the original gloss using a 60-degree reading per AAMA 2604 specifications. Gloss retention shall be measured on the exposed painted surface which has been cleaned of oil, grease, chalk, oxidized film or other contaminants, corresponding values shall be measured on the original retained batch Product(s) (Product(s) are stored in the dark at temperatures below 30° C).

Paint Adhesion: Adhesion of Painted Finish when initially applied to test panels and measured by reference to AAMA 2604-02; Clause 7.4.2 will show no evidence of film removal.

Warranty Terms and Conditions.

1. Registration of the purchased Product(s) is required for this warranty to be in effect. This warranty is valid to the original purchaser and one owner of the structure, where the Product(s) have been installed.
2. “Normal atmospheric conditions” excludes corrosive or aggressive atmospheres such as those contaminated with chemical fumes, salts, or other corrosive elements, including areas within proximity of a body of salt water. LUMABUILT recommends freshwater cleaning and maintenance program(s) be in effect to prevent corrosion from accumulated deposits.
3. The warranty will not extend or cover.
 - a. Damages to the coated metal caused by handling, shipping, processing and/or installation; or
 - b. Damages to the coated metal caused by scratching or abrading after installation; or

LUMABUILT Warranty Number:
Warranty Expiration Date:



- c. Damages to the coated metal as a result of standing water in horizontal installations.
- d. The warranty will not be applicable to damage or failure, which is caused by acts of God, falling objects, external forces, explosions, fire, riots, civil commotion's, acts of war, or other such similar or dissimilar occurrences beyond LUMABUILT's control.
- e. Customer shall make available to LUMABUILT the dates of the installation of the coated metal, the maintenance records including details of washing and cleaning procedures in compliance with the annual cleaning requirements as stated in the "Required Maintenance" section of this warranty. Customers that demonstrate the failure of the coated metal was due to a breach of the warranty stated herein.
- f. Claims must be made in writing to LUMABUILT within 30 days of the discovery of a problem and authorization obtained prior to beginning any repair and/or refinishing work. The claimant must provide proof of coverage. Claims must be made by writing and can be sent to the customer service department at LUMABUILT. After receiving such notice, LUMABUILT must be given a reasonable opportunity to inspect and verify the claim.

LUMABUILT's exclusive liabilities, under this warranty, or otherwise, will be limited to refinishing and/or repairing, at LUMABUILT's sole discretion, the defective powder coating. The warranty on any refinished, repaired or replaced coated metal supplied hereunder shall be for the remainder of the warranty period applicable to the originally coated metal. All warranty work will be performed by a company or contractor selected by LUMABUILT. Color variance between refinished and/or repainted product and original shall not be indicative of a defect.

This warranty represents the entire agreement between all parties in relation to its subject matter and supersedes any previous agreement whether written or oral between the parties in relation to its subject matter. The limited warranties state the entire liability of LUMABUILT with respect to the Product(s) covered by them. LUMABUILT shall have no liability for any incidental or consequential damages. No person is authorized to make any representation or warranty on behalf of LUMABUILT except as expressly set forth above, and any such statement shall not be binding on LUMABUILT except as expressly set forth above. LUMABUILT makes no warranty of any kind, express or implied, including, without limitation, any implied warranty of merchantability or fitness for a particular purpose. Warranties shall be the duration of this limited warranty or such shorter duration as provided under applicable local law. These limited warranties give you specific legal rights, and you may also have other rights which vary from region to region and state by state.

NOTHING WITHIN THIS WARRANTY SHALL BE CONSTRUED AS A WARRANTY OF THE WORKMANSHIP OF ANY INSTALLER OR AS IMPOSING ON LUMABUILT ANY LIABILITY FOR UNSATISFACTORY PERFORMANCE CAUSED BY FAULTY WORKMANSHIP BEFORE, DURING, OR AFTER INSTALLATION.

It is agreed, by all parties involved, that all claims and disputes relating to this agreement, which cannot be settled through negotiation, will try in good faith to first settle the dispute by mediation administered by the American Arbitration Association (Construction Industry Mediation Procedures) as a prelude to mandatory binding arbitration. Such binding arbitration is to be conducted and administered by the Construction Industry Arbitration Rules of the American Arbitration Association. Both seller and

LUMABUILT Warranty Number:
Warranty Expiration Date:



Lumabuilt

Mosaic
Alumaboard

purchaser agree to share equally in the costs of both mediation and arbitration and that such binding arbitration will be the sole and final remedial action.

Required Maintenance.

On a semi-annual basis, use a soft sponge or cloth with water and mild detergent or a non-abrasive soap with the pH range of 5-9 to clean the powder coated area of dirt, grime and other debris. Pressure washing and the use of harsh detergents or chemicals is not recommended and may void this warranty. Include in your maintenance records the following: date, time, specific products used, name of maintenance person and their designation, maintenance company name and observed general condition of the powder coated finish.

All notice given under or pursuant to this warranty shall be in writing in English and sent by Registered or Certified Mail, postage prepaid, return receipt requested to:

LUMABUILT

2529 West Jackson Street

Phoenix, Arizona 85009

<p>Seller:</p> <p>LUMABUILT</p> <p>2529 West Jackson Street</p> <p>Phoenix, AZ 85009</p>
--

LUMABUILT Representative Signature

Printed Name Date

<p>Customer:</p> <p>_____</p> <p>_____</p> <p>_____</p>
--

Customer Signature

Printed Name Date

<p>LUMABUILT Warranty Number:</p> <p>Warranty Expiration Date:</p>	<p>Page 4</p>
--	---------------



Lumabuilt

Please note that RMP Rollfab Architectural Solutions has been rebranded as **Lumabuilt**.

Product names have also been changed; the product specifications, warranties, accessories, and all things related to the products, have not changed. The products have been rebranded in name only.

Rebranding began June 26, 2023.

Mosaic is now the new product name for Alumaboard for Planks and Battens.

Mosaic
Planks and Battens

Technical Data Sheet
BEIGE SERIE 700 RAGG
Cod. DS 716

Powder Coatings: TGIC FREE POLYURETHANE

Use: Outdoor

Suggested for: Base coat for heat transfer process

Application: Corona Charging

Curing Cycle:

<u>25' X 195°C (Metal Temperature)</u>	<u>25' X 383 °F</u>
<u>20' X 200°C (Metal Temperature)</u>	<u>20' X 392 °F</u>
<u>15' X 205°C (Metal Temperature)</u>	<u>15 X 401°F</u>

Chemical and Mechanical Properties

1 - Packing	20 Kg. Boxes with PE-bag, palletized and shrink-wrapped
2- Shelf-life	In a dry place with a temperature lower than 35 °C - 95°F for 12 months
3 - Specific weight	1.27 ± 0.03 g/cm ³
4 – Yield m ² /Kg. considering 60 microns film thickness	13,1 m ² /Kg
5 - Appearance	Rough

	RIF Standard	Miniumum Tolerance Limit	Result
6 - Gloss (Gardner 60°)	ISO 2813	8 ± 3	OK
7 - Buchholz hardness	ISO 2815	minimum 80	OK
8 - Adhesion	ISO 2409	No loss of Adhesion	OK
9 - Thickness (Minim. thickness)	ISO 2360	60 microns	OK
10 - Direct Impact Test *	ASTM D2794	2,5 N*m	No Coating detaching
11 - Reverse Impact Test	ASTM D2794	2,5 N*m	No Coating detaching
12 - Erichsen Identation *	ISO 1520	5 mm	No Coating detaching
13 - Bending *	ISO 1519	mandrino 5 mm mandrel 5mm	No Coating detaching
14 - Kesternich Test	ISO 3231	No Coating detaching or penetration higher than 1 mm.	OK
15 - Humidity Test**	DIN 50017	No blistering/coating detaching	OK
16 - Acetic acid - Salt Spray Test **	ISO 9227	Corrosion lower than 4 mm.	OK
17 - Accellerated weathering Test	ISO 11341	Rit. di Brill. >50% ΔE < 2	OK
18 - Pressure Cooker Test	Cap.Qualicoat	No blistering/coating detaching	OK
19 - Lime Resistance	Cap.Qualicoat	No blistering/coating detaching	OK

* Tests carried out on 1 mm. thickness alloy AA5005 H24 chromate aluminium sheets and 60 microns coating layer .

** Tests carried out on AA6060 extruded alloy

Note importanti:

Important information:

La brillantezza del film di vernice è influenzata dalla spessore della polvere applicata e dalle condizioni di polimerizzazione.

Brightness of powder coating layer could change by applied thickness and by the curing process.

Per ottenere le migliori performance di resistenza ai raggi uv il valore di brillantezza del film di vernice deve rispettare i valori indicati nella scheda tecnica.

To obtain best UV ray resistance performance, the powder coating brightness must comply technical data sheet value.

This technical information is reliable to the best of our and our customers' experience but non warranty or guarantee is implied. Users will assume responsibility for the application of the product testing its characteristics on their own equipment and carriers.

Emission Date 20/07/2004

Revision 06
Date Revision 25/09/2007

Technical Data Sheet
MARRONE 349 SERIE 700 RAGG
Cod. DS 733

Powder Coatings:	TGIC FREE POLYURETHANE
Use:	Outdoor
Suggested for:	Base coat for heat transfer process
Application	Corona Charging
Curing Cycle:	25' X 195°C (Metal Temperature) 25' X 383 °F 20' X 200°C (Metal Temperature) 20' X 392 °F 15' X 205°C (Metal Temperature) 15 X 401°F

Chemical and Mechanical Properties

1 - Packing	20 Kg. Boxes with PE-bag, palletized and shrink-wrapped		
2- Shelf-life	In a dry place with a temperature lower than 35 °C - 95°F for 12 months		
3 - Specific weight	1.27 ± 0.03 g/cm ³		
4 – Yield m ² /Kg. considering 60 microns film thickness	13,1 m ² /Kg		
5 - Appearance	Rough		
	RIF Standard	Miniumum Tollerance Limit	Result
6 - Gloss (Gardner 60°)	ISO 2813	8 ± 3	OK
7 - Buchholz hardness	ISO 2815	minimum 80	OK
8 - Adhesion	ISO 2409	No loss of Adhesion	OK
9 - Thickness (Minim. thickness)	ISO 2360	60 microns	OK
10 - Direct Impact Test *	ASTM D2794	2,5 N*m	No Coating detaching
11 - Reverse Impact Test	ASTM D2794	2,5 N*m	No Coating detaching
12 - Erichsen Identation *	ISO 1520	5 mm	No Coating detaching
13 - Bending *	ISO 1519	mandrino 5 mm mandrel 5mm	No Coating detaching
14 - Kesternich Test	ISO 3231	No Coating detaching or penetration higher than 1 mm.	OK
15 - Humidity Test**	DIN 50017	No blistering/coating detaching	OK
16 - Acetic acid - Salt Spray Test **	ISO 9227	Corrosion lower than 4 mm.	OK
17 - Accellerated weathering Test	ISO 11341	Rit. di Brill. >50% ΔE < 2	OK
18 - Pressure Cooker Test	Cap.Qualicoat	No blistering/coating detaching	OK
19 - Lime Resistance	Cap.Qualicoat	No blistering/coating detaching	OK

* Tests carried out on 1 mm. thickness alloy AA5005 H24 chromate aluminium sheets and 60 microns coating layer .

** Tests carried out on AA6060 extruded alloy

Note importanti:

Important information:

La brillantezza del film di vernice è influenzata dalla spessore della polvere applicata e dalle condizioni di polimerizzazione.

Brightness of powder coating layer could change by applied thickness and by the curing process.

Per ottenere le migliori performance di resistenza ai raggi uv il valore di brillantezza del film di vernice deve rispettare i valori indicati nella scheda tecnica.

To obtain best UV ray resistance performance, the powder coating brightness must comply technical data sheet value.

This technical information is reliable to the best of our and our customers' experience but non warranty or guarantee is implied.
Users will assume responsibility for the application of the product testing its characteristics on their own equipment and carriers.

Emission Date **20/07/2004**

Revision **06**
Date Revision **25/09/2007**