

# INDEX

**I - INDEX**

**IA - INDEX CONTINUED**

**0- ELEVATION**

**0A- PANEL ISO**

**1- COMPONENTS**

**2- TYP. HORIZONTAL REVEAL DETAIL**

**3- TYP. VERTICAL REVEAL DETAIL**

**4- TYP. ALTERNATE REVEAL DETAIL**

**5- STIFFENER DETAIL**

**6- INSIDE CORNER DETAIL**

**7- OUTSIDE CORNER DETAIL**

**8- PANEL END DETAIL**

**9- PANEL END DETAIL WITH REVEAL**

**10- BASE DETAIL 1 WITH REVEAL**

**11- BASE DETAIL 2 WITH REVEAL**

**12- BASE DETAIL 1 WITH SEALANT**

**13- BASE DETAIL 2 WITH SEALANT**

**14- BASE DETAIL 1 NO REVEAL**

**15- BASE DETAIL 2 NO REVEAL**

**16- WINDOW HEADER DETAIL WITH REVEAL**

**17- WINDOW SILL DETAIL WITH REVEAL**

**18- WINDOW JAMB DETAIL WITH REVEAL**



**Lumabuilt**

**Visage**

2529 W. Jackson St.  
Phoenix, AZ 85298

PHONE: (602) 275-1676

FAX: (602) 275-1739

**A1000 DETAIL INDEX**

SCALE: NTS

1/26/24

SYSTEM = 4MM A1000

## INDEX

- 19- WINDOW HEADER DETAIL W/ SEALANT**
- 20- WINDOW SILL DETAIL W/ SEALANT**
- 21- WINDOW JAMB DETAIL W/ SEALANT**
- 22- WINDOW HEADER DETAIL NO REVEAL**
- 23- WINDOW JAMB DETAIL NO REVEAL**
- 24- SOFFIT & FASCIA DETAIL**
- 25- ACM COPING CAP DETAIL**
- 26- ACM @ COPING CAP DETAIL**
- 27- ACM AT GRAVEL STOP DETAIL**
- 28- SQUARE COLUMN COVER DETAIL**
- 29- STRUCTURAL PENETRATION DETAIL**
- 30- LIGHT STRIP DETAIL**
- 31- EXPANSION JOINT DETAIL**
- 32- PENETRATION DETAIL**



Lumabuilt

Visage

2529 W. Jackson St.  
Phoenix, AZ 85298

PHONE: (602) 275-1676

FAX: (602) 275-1739

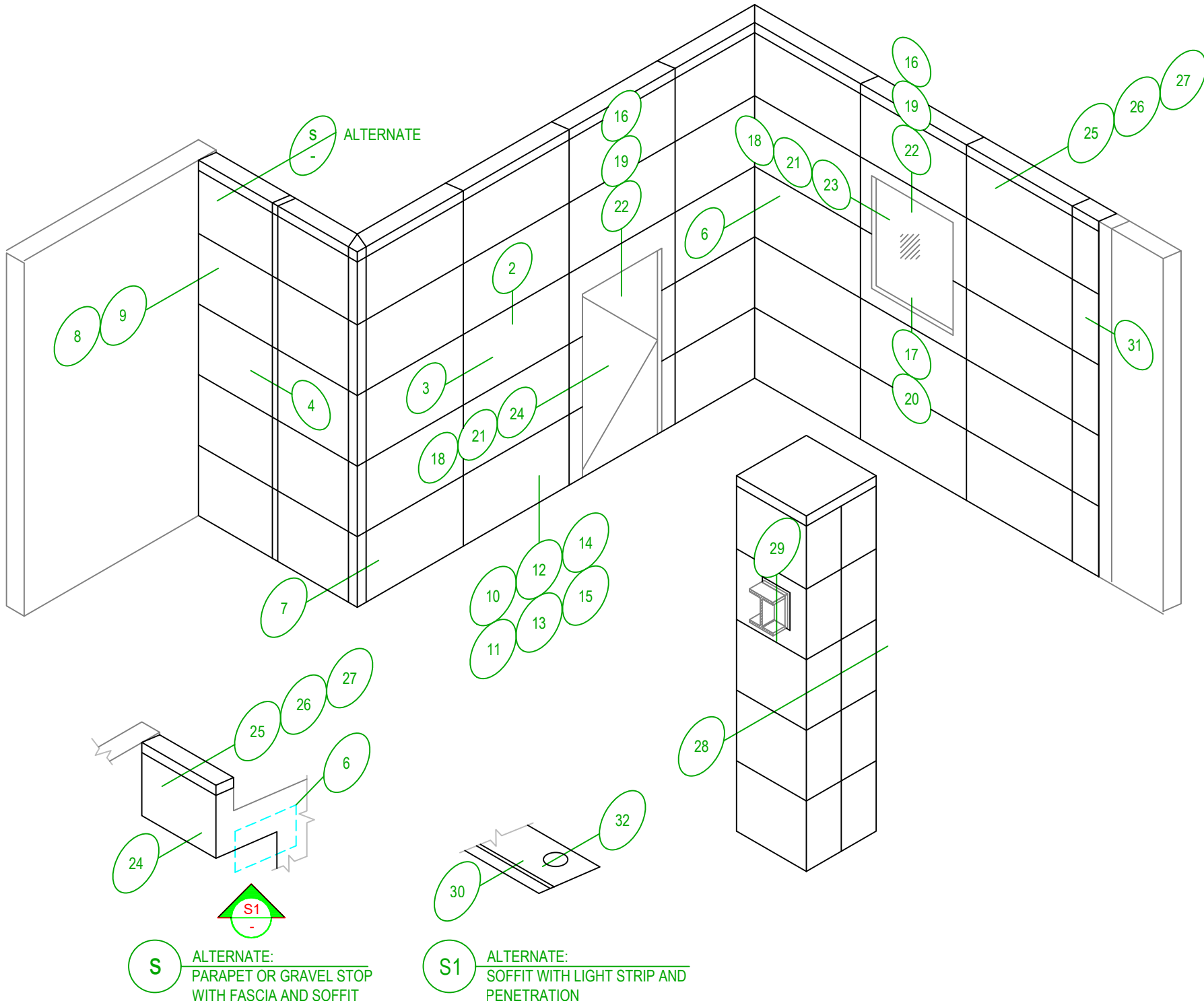
A1000 DETAIL INDEX

SCALE: NTS

1/26/24

SYSTEM = 4MM A1000

IA



**S** ALTERNATE:  
PARAPET OR GRAVEL STOP  
WITH FASCIA AND SOFFIT

**S1** ALTERNATE:  
SOFFIT WITH LIGHT STRIP AND  
PENETRATION

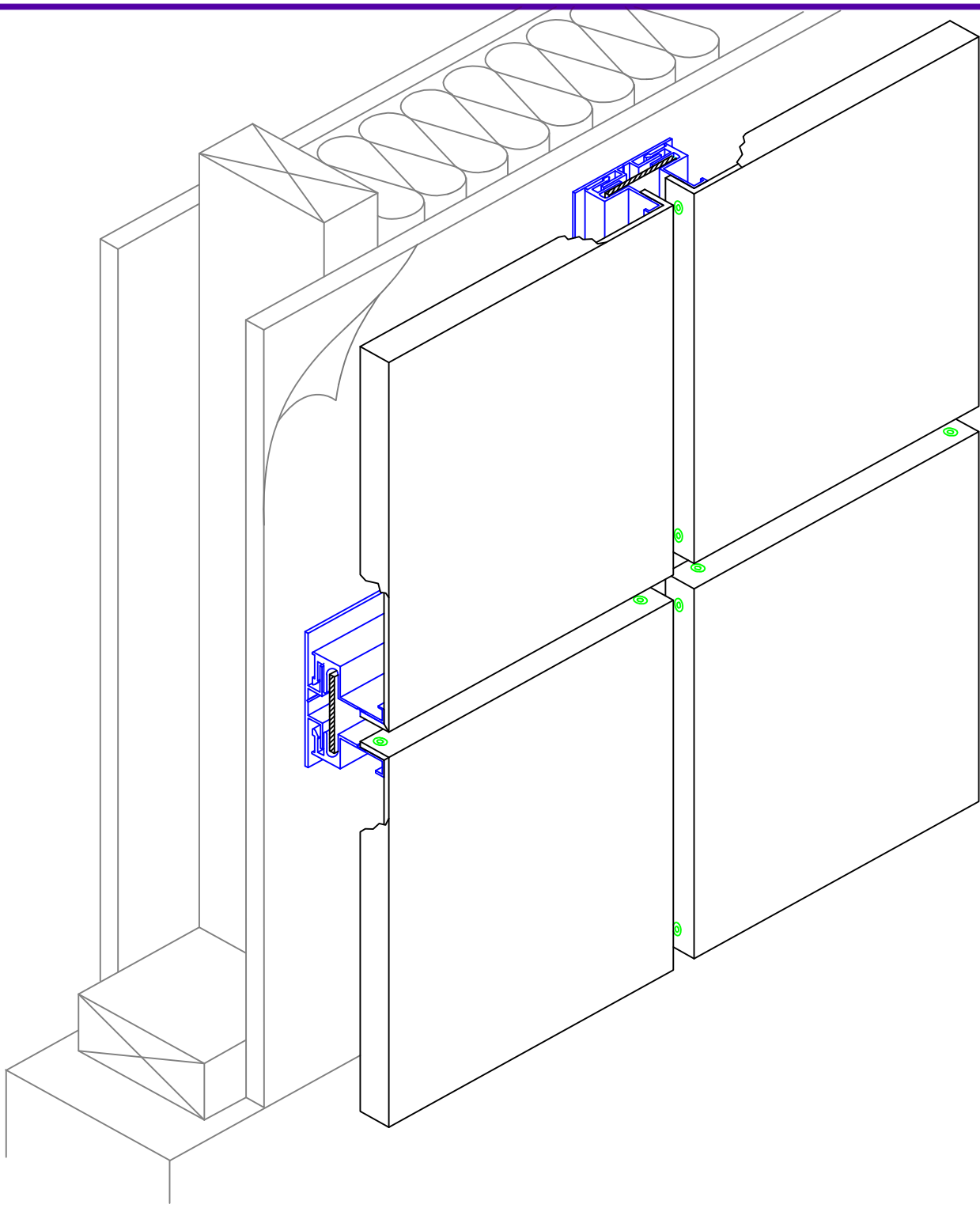
0

**A1000 ACM DETAIL ELEVATION**

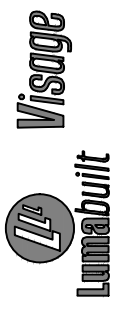
SCALE: NTS      1/26/24      SYSTEM = 4MM A1000

2529 W. Jackson St.  
Phoenix, AZ 85298  
PHONE: (602) 275-1676  
FAX: (602) 275-1739

**Visage**  
**Lumabuilt**



2529 W. Jackson St.  
Phoenix, AZ 85298  
PHONE: (602) 275-1676  
FAX: (602) 275-1739



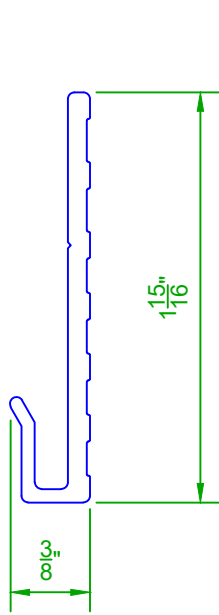
# A1000 PANEL ISOMETRIC SKETCH

SCALE: NTS

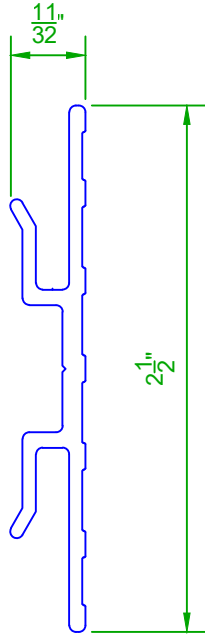
1/26/24

SYSTEM = 4MM A1000

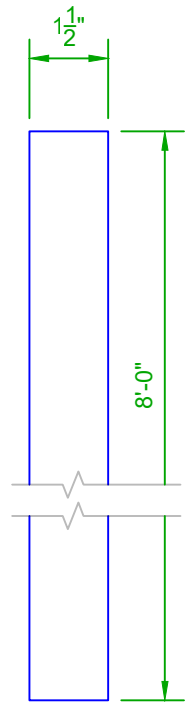
0A



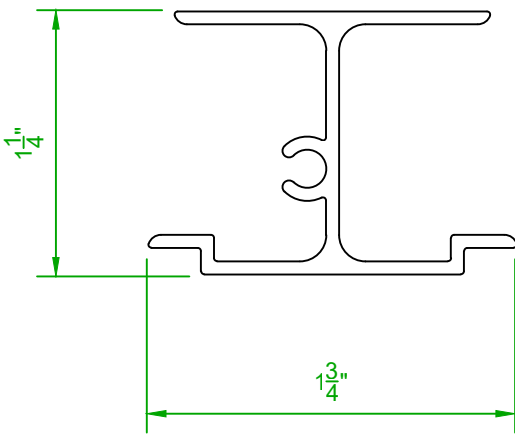
**SILL CLIP EXTRUSION**



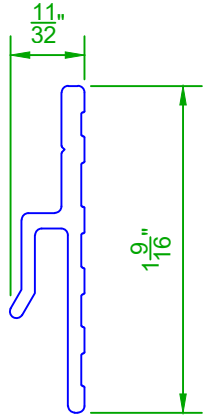
**STD. WALL CLIP EXTRUSION**



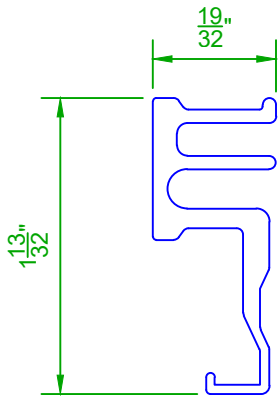
**ACM REVEAL STRIP  
(STD. PANEL JOINT)  
(HORIZONTAL & VERTICAL)**



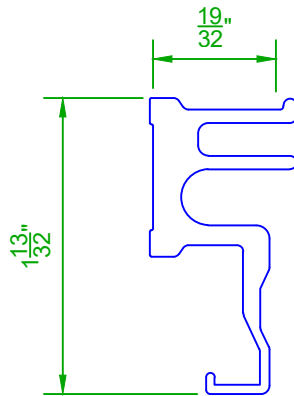
**STIFFENER EXTRUSION**



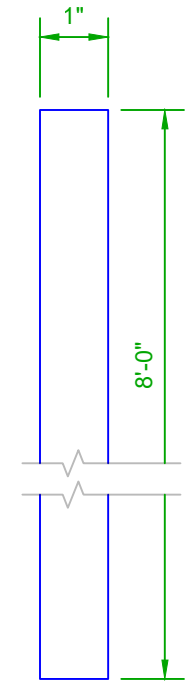
**MODIFIED WALL  
CLIP EXTRUSION**



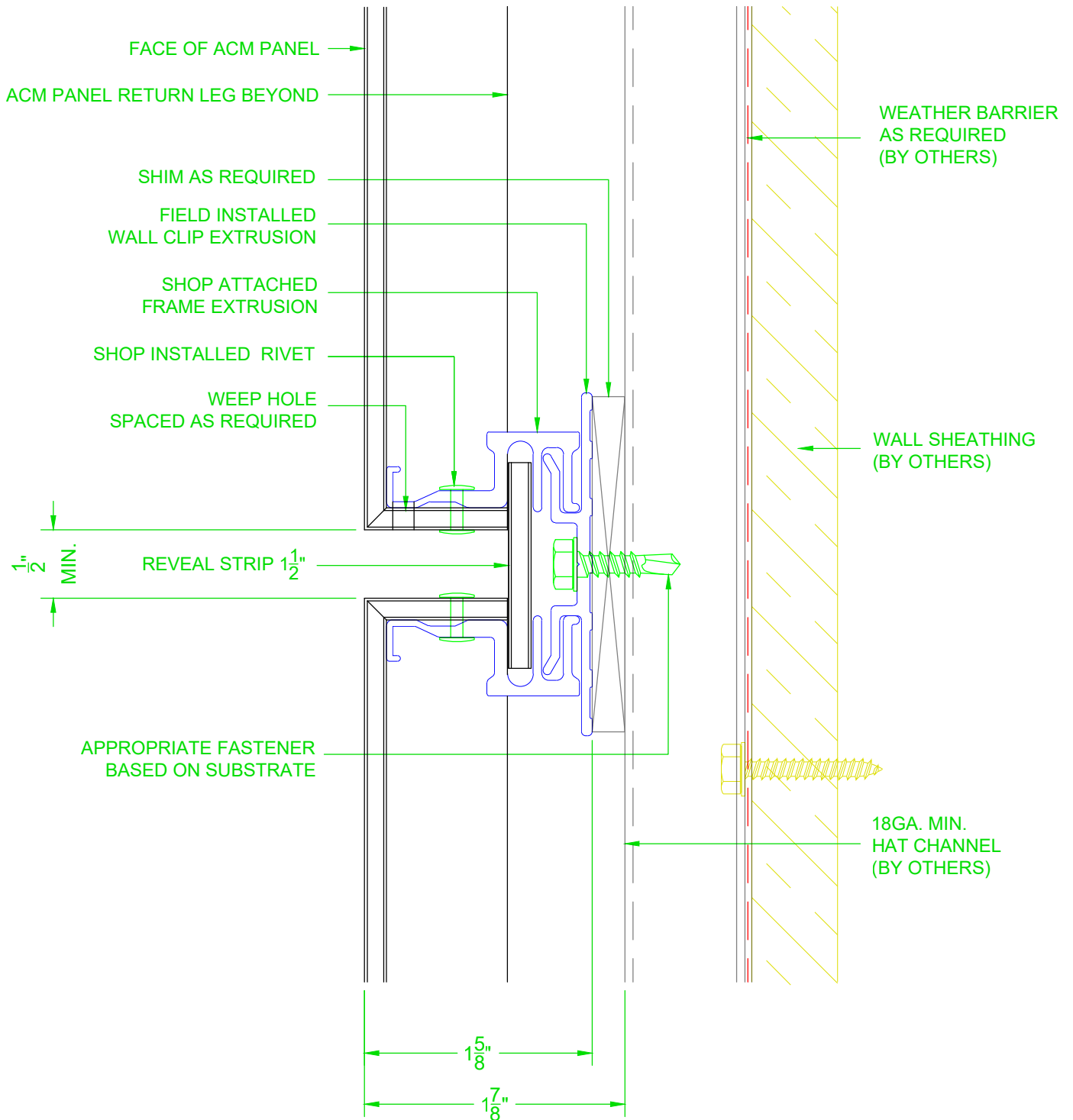
**4MM FRAME EXTRUSION**

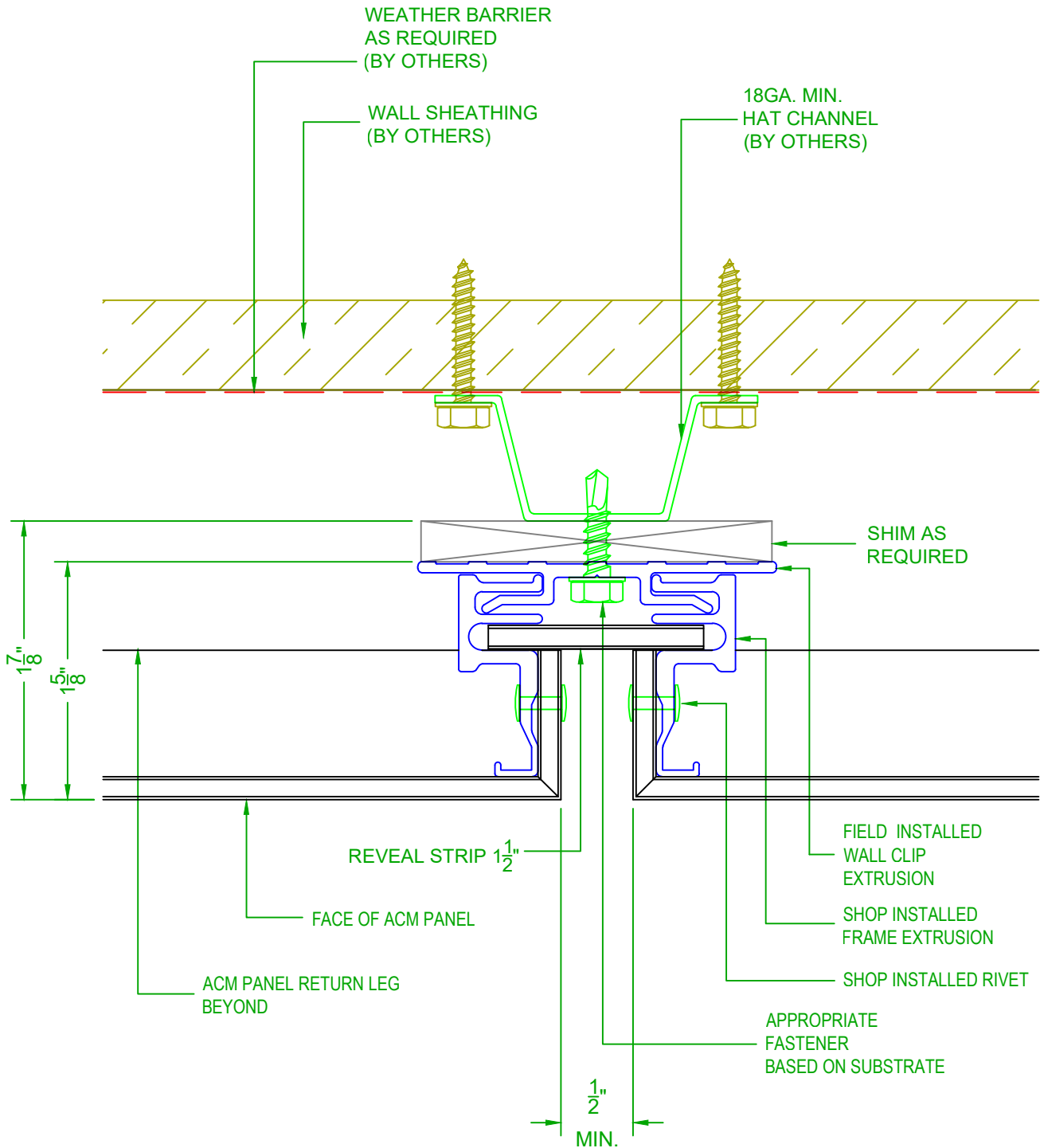


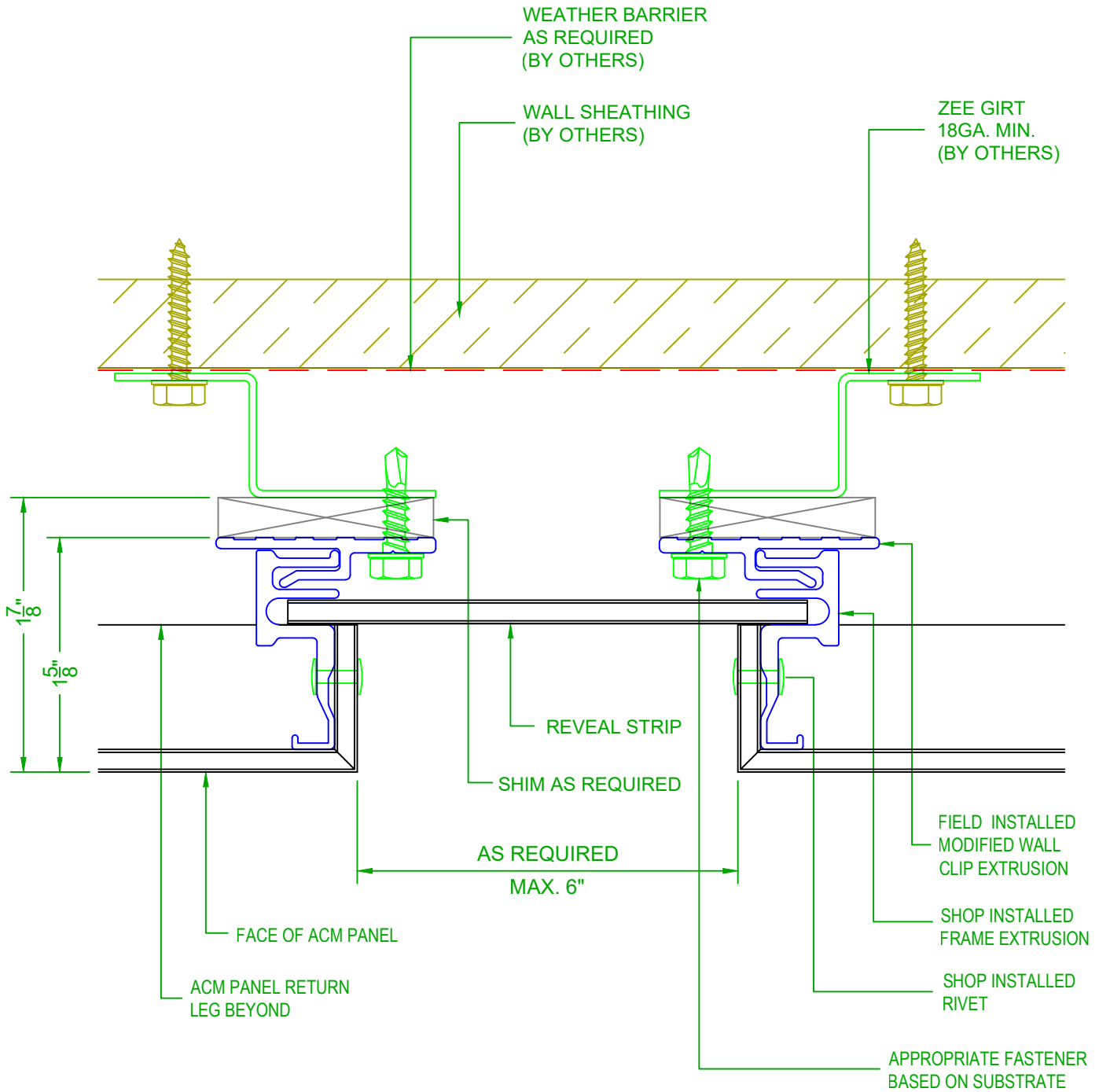
**6MM FRAME EXTRUSION**



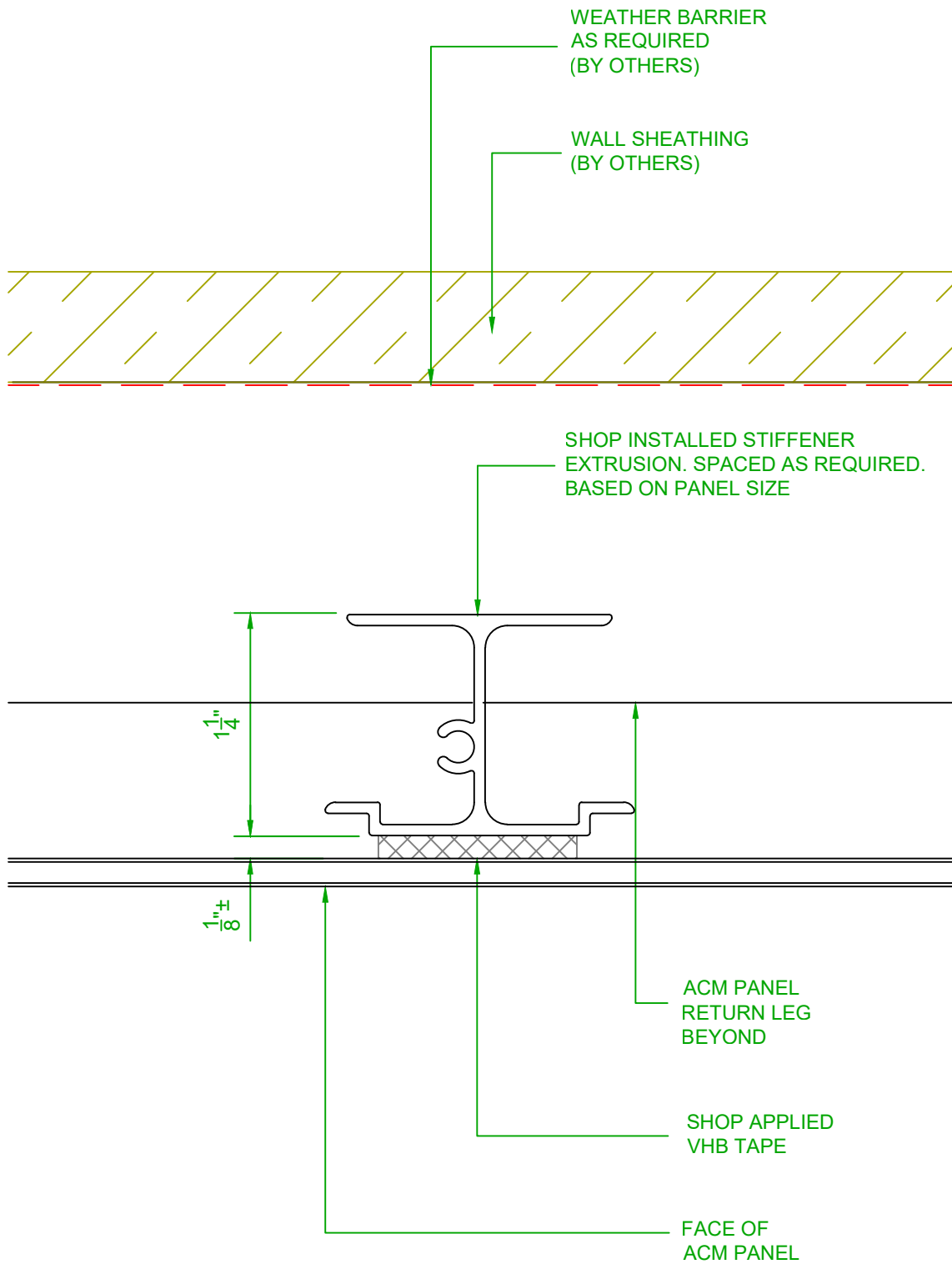
**ACM REVEAL STRIP  
(PANEL EDGE)**

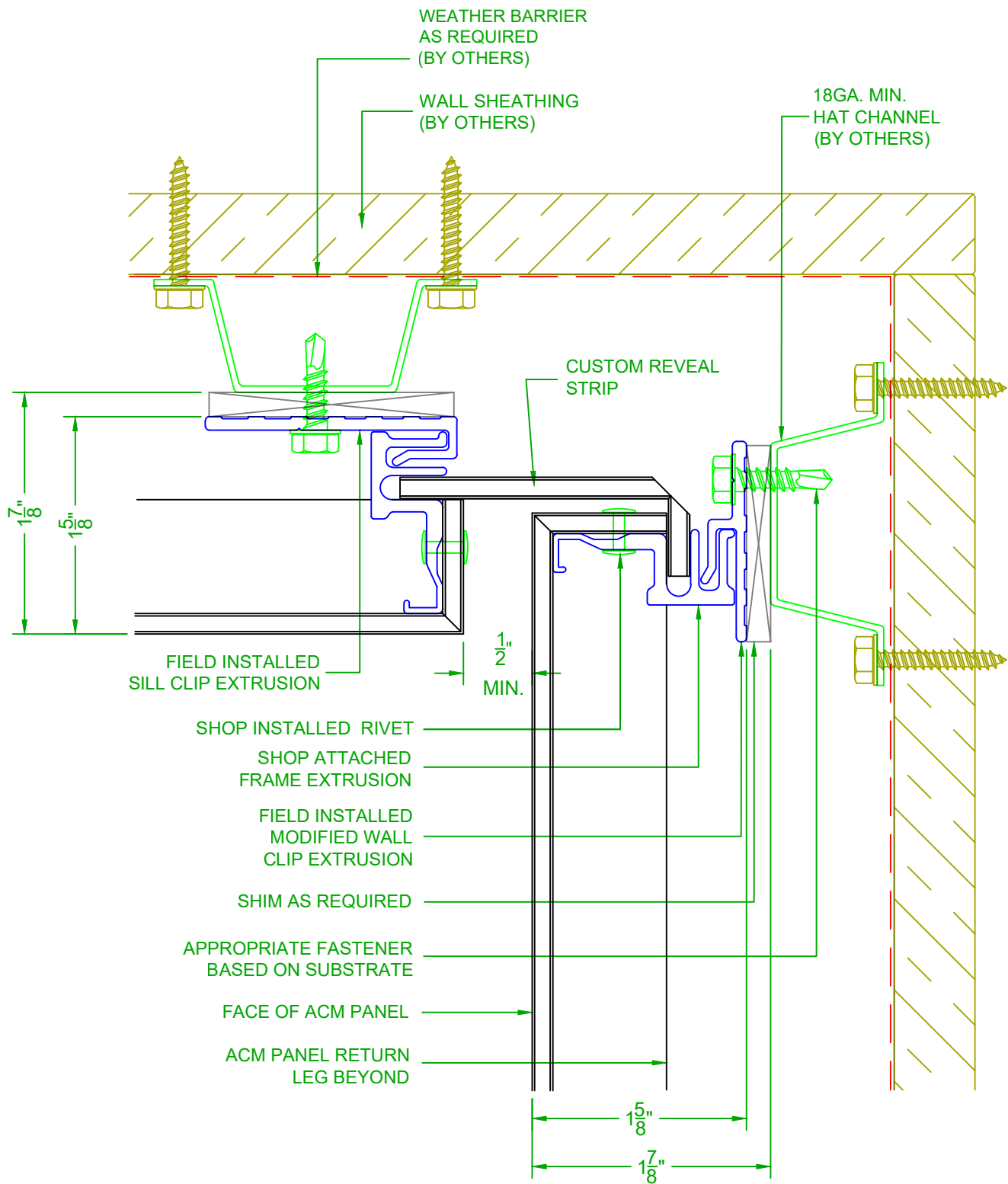


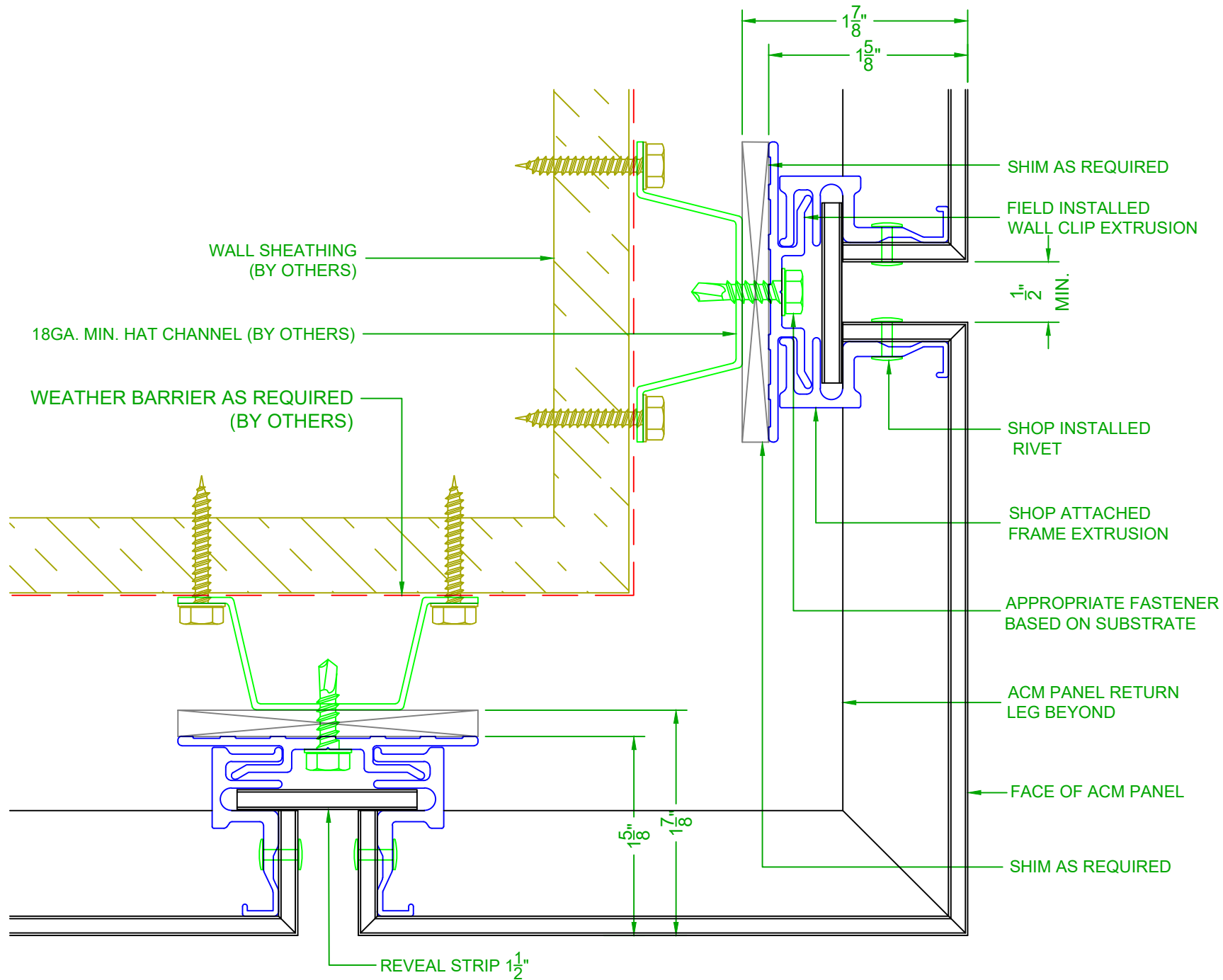












WALL SHEATHING  
(BY OTHERS)

18GA. MIN. HAT CHANNEL (BY OTHERS)

WEATHER BARRIER AS REQUIRED  
(BY OTHERS)

REVEAL STRIP 1 1/2"

1 5/8"

1 7/8"

1 7/8"

1 5/8"

1 1/2" MIN.

SHIM AS REQUIRED

SHIM AS REQUIRED

FIELD INSTALLED  
WALL CLIP EXTRUSION

SHOP INSTALLED  
RIVET

SHOP ATTACHED  
FRAME EXTRUSION

APPROPRIATE FASTENER  
BASED ON SUBSTRATE

ACM PANEL RETURN  
LEG BEYOND

FACE OF ACM PANEL

SHIM AS REQUIRED

# TYP. OUTSIDE CORNER DETAIL

2529 W. Jackson St.  
Phoenix, AZ 85298  
PHONE: (602) 275-1676  
FAX: (602) 275-1739

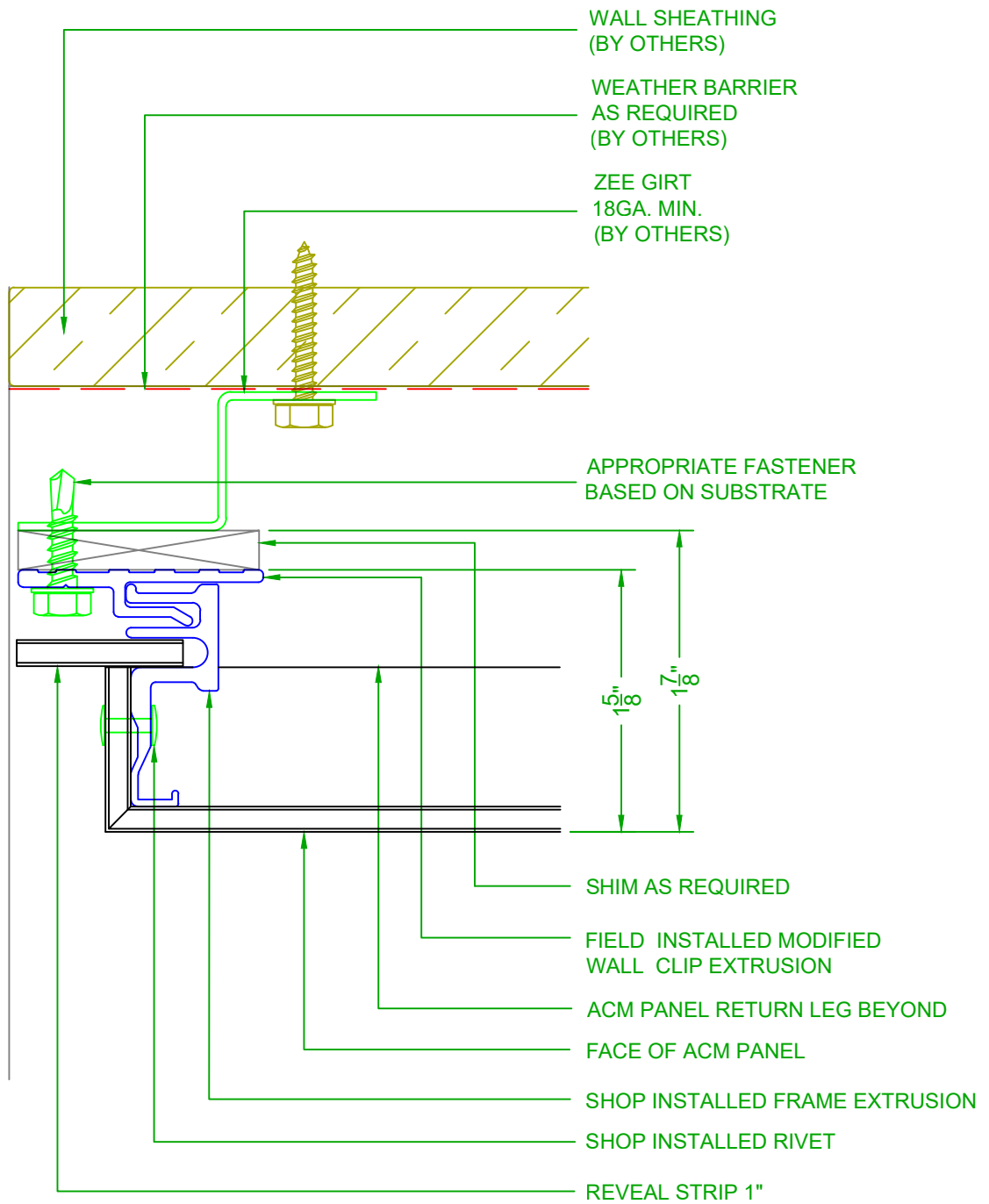
**Visage**

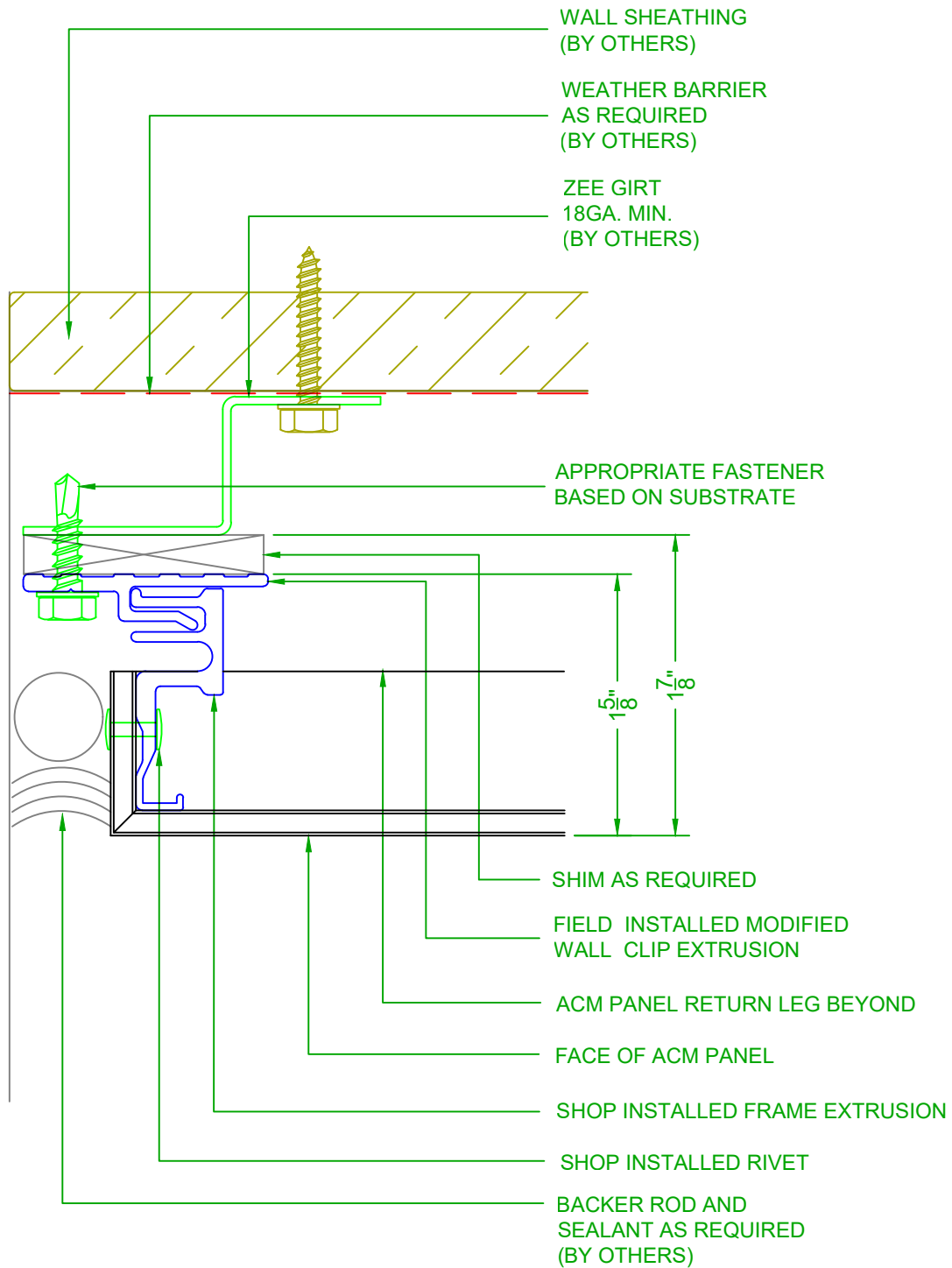
**Lumabuilt**

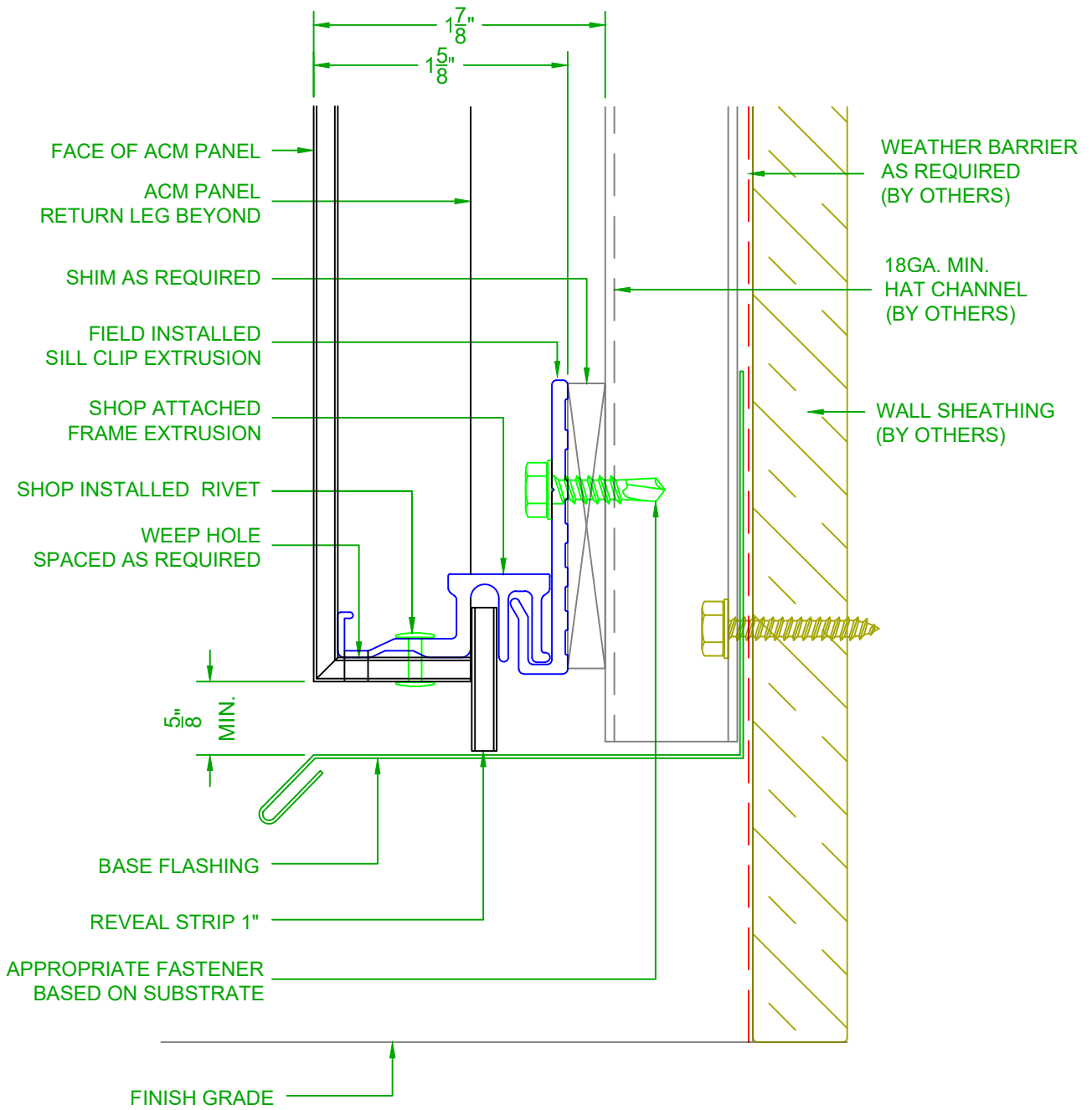
SYSTEM = 4MM A1000

1/26/24

SCALE: NTS







WEATHER BARRIER



Visage

2529 W. Jackson St.  
Phoenix, AZ 85298

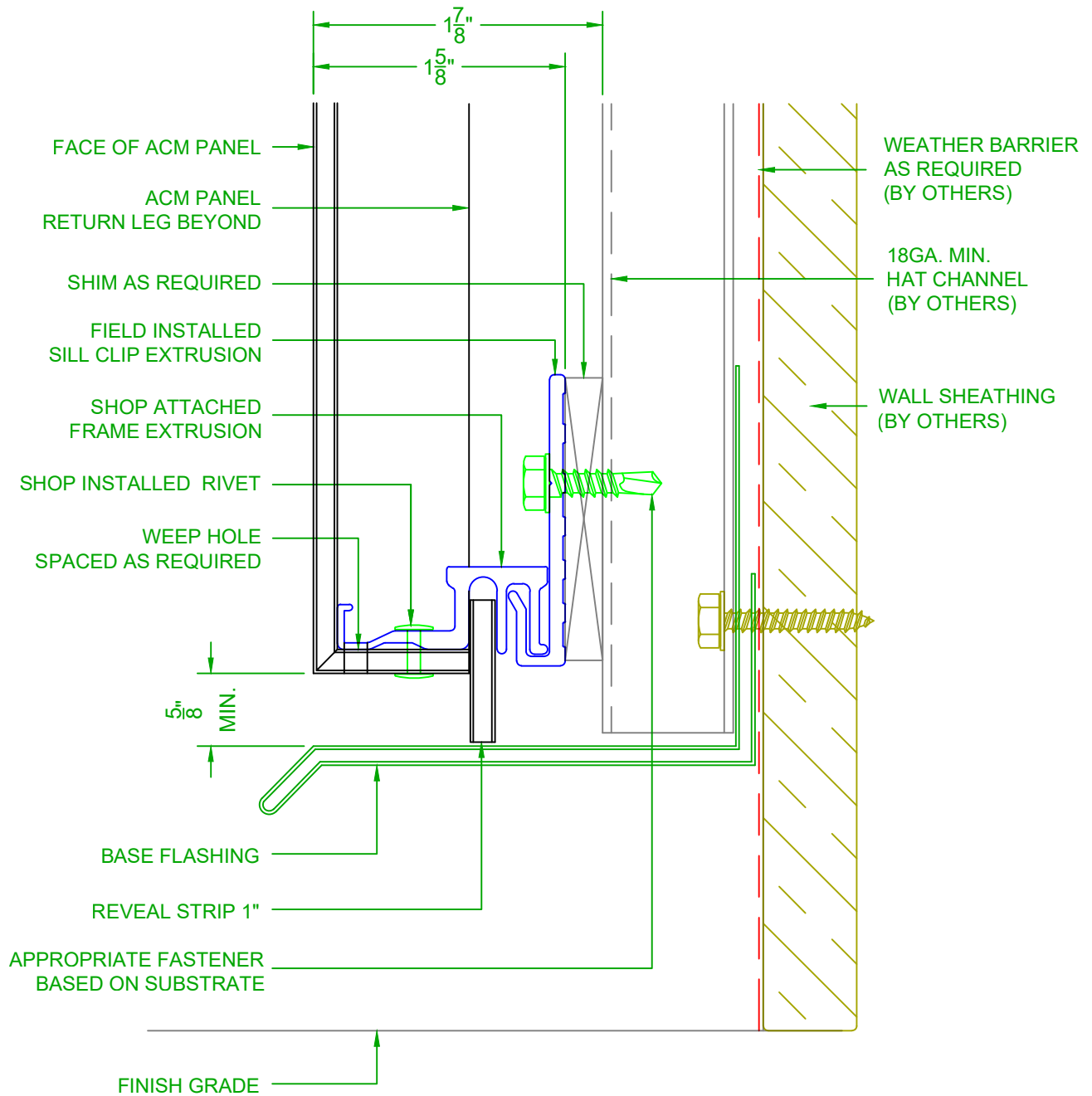
PHONE: (602) 275-1676  
FAX: (602) 275-1739

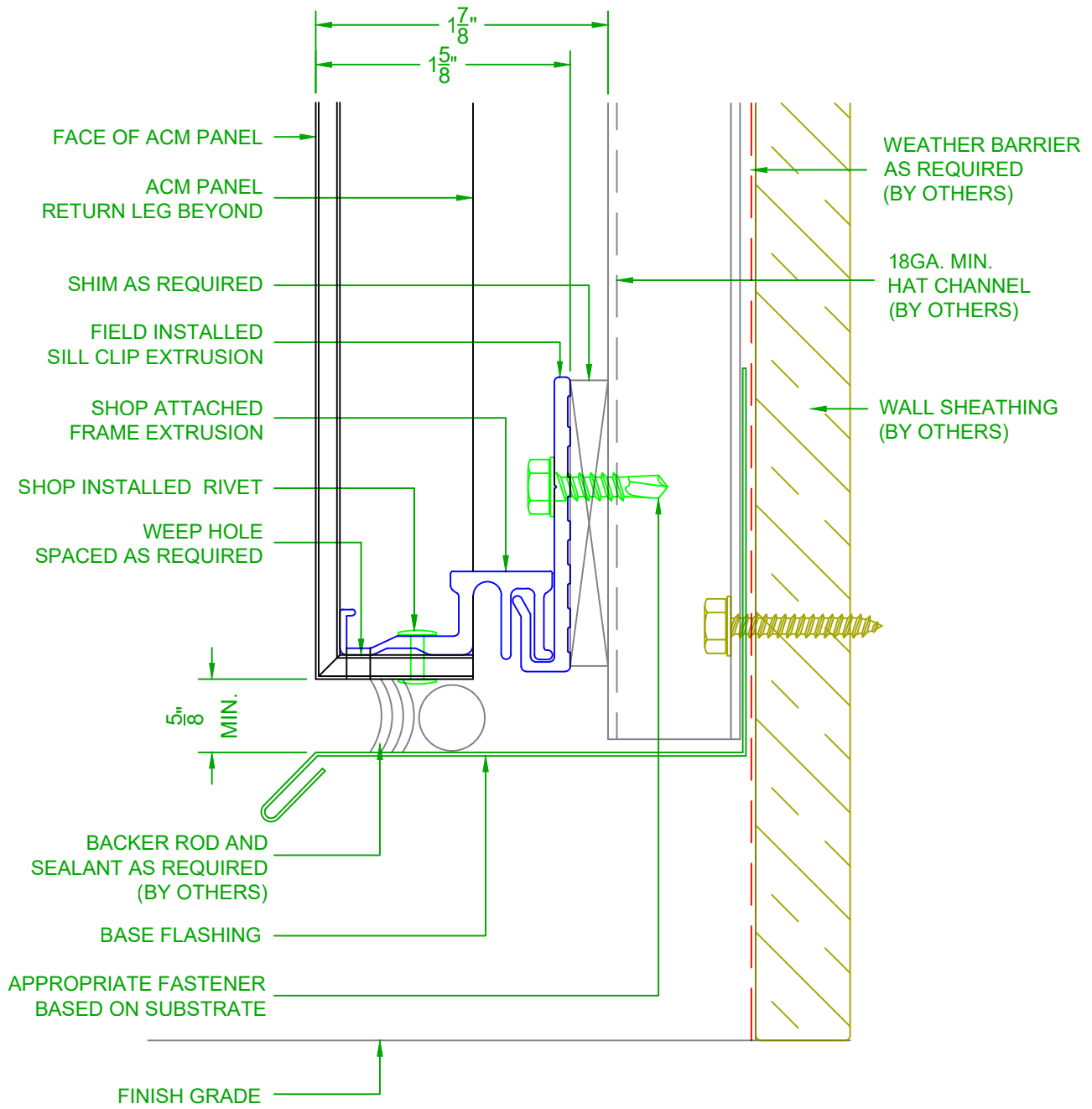
# PANEL BASE DETAIL 1 (REVEAL)

SCALE: NTS

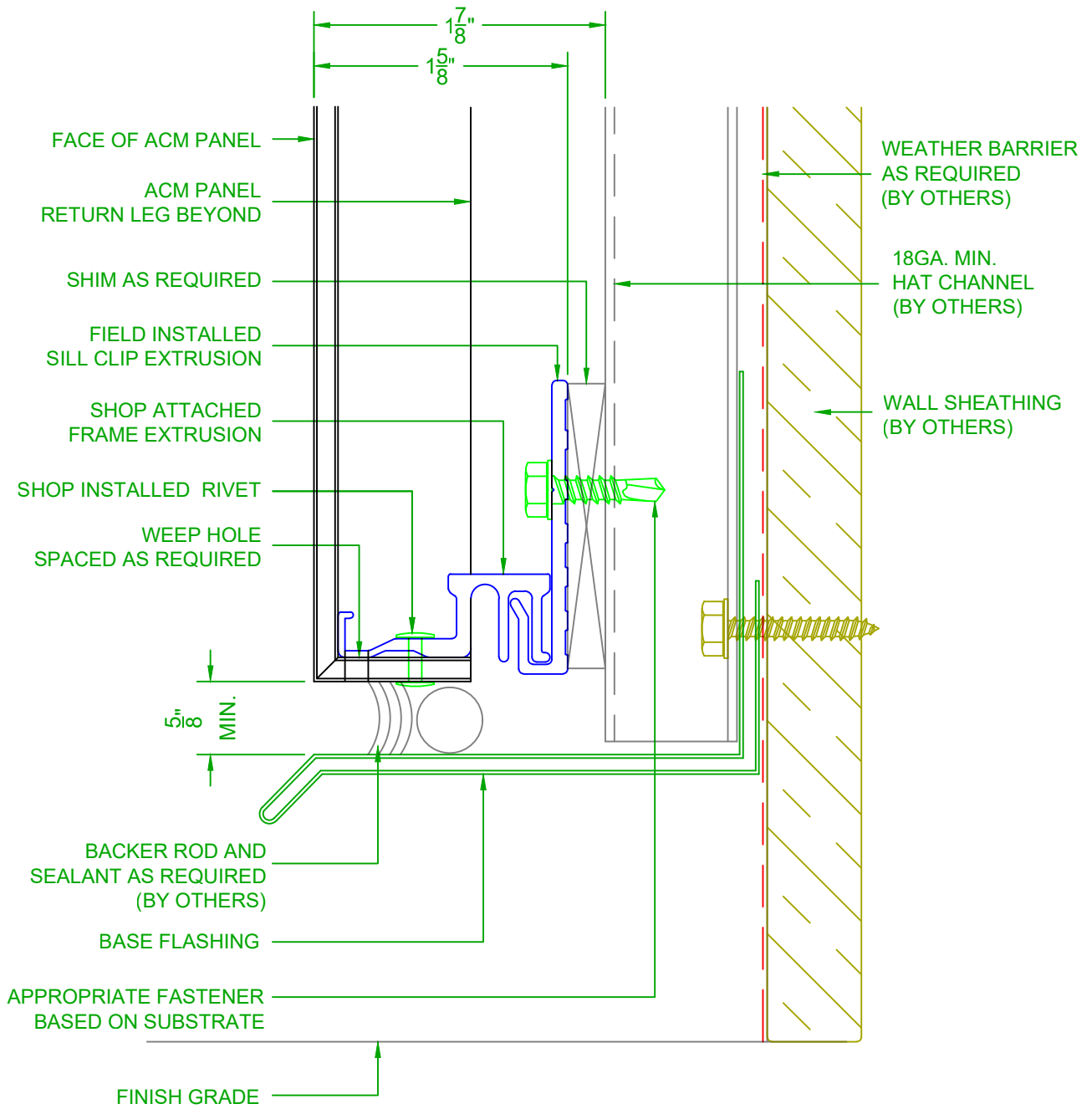
1/26/24

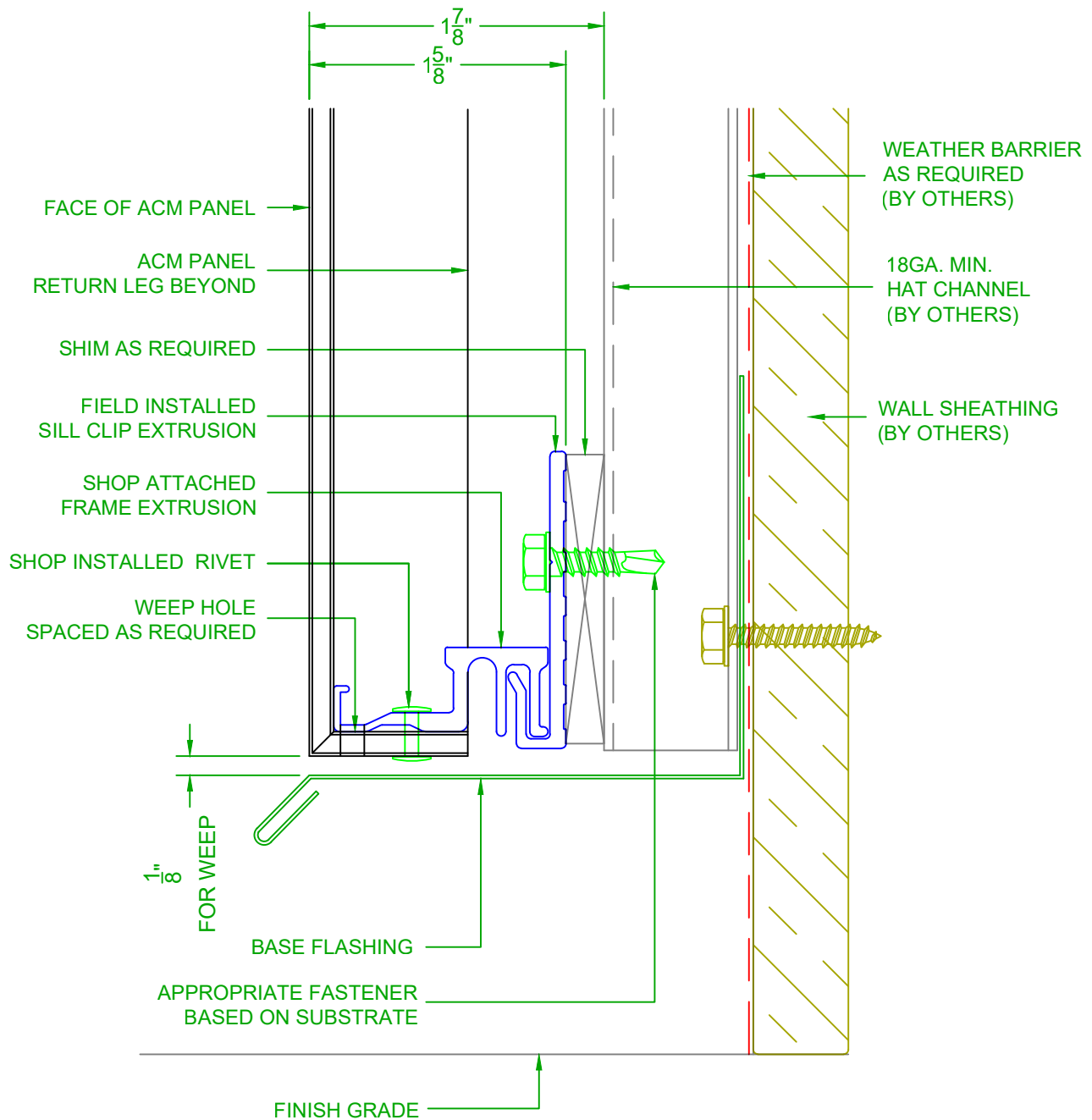
SYSTEM = 4MM A1000

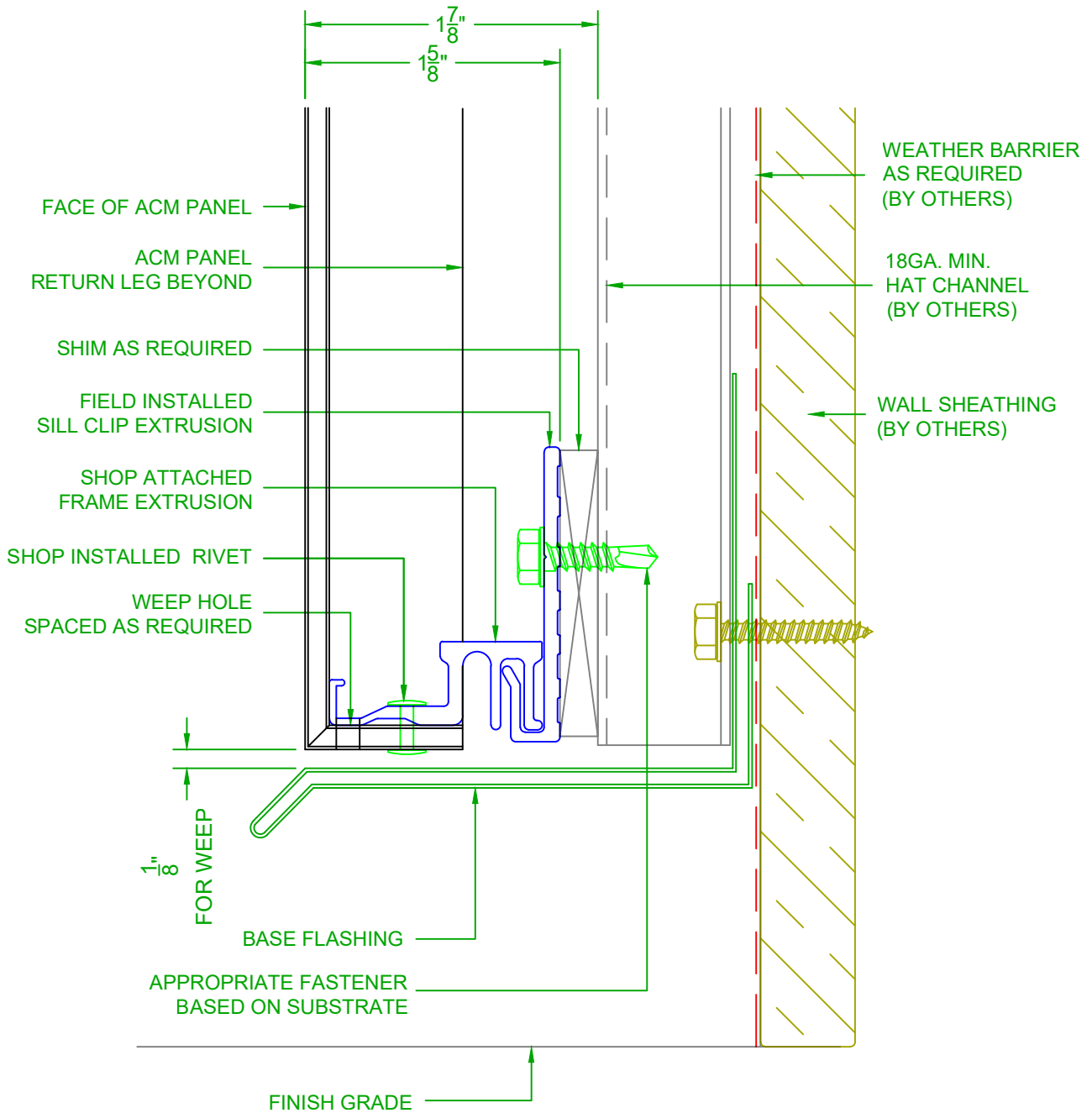


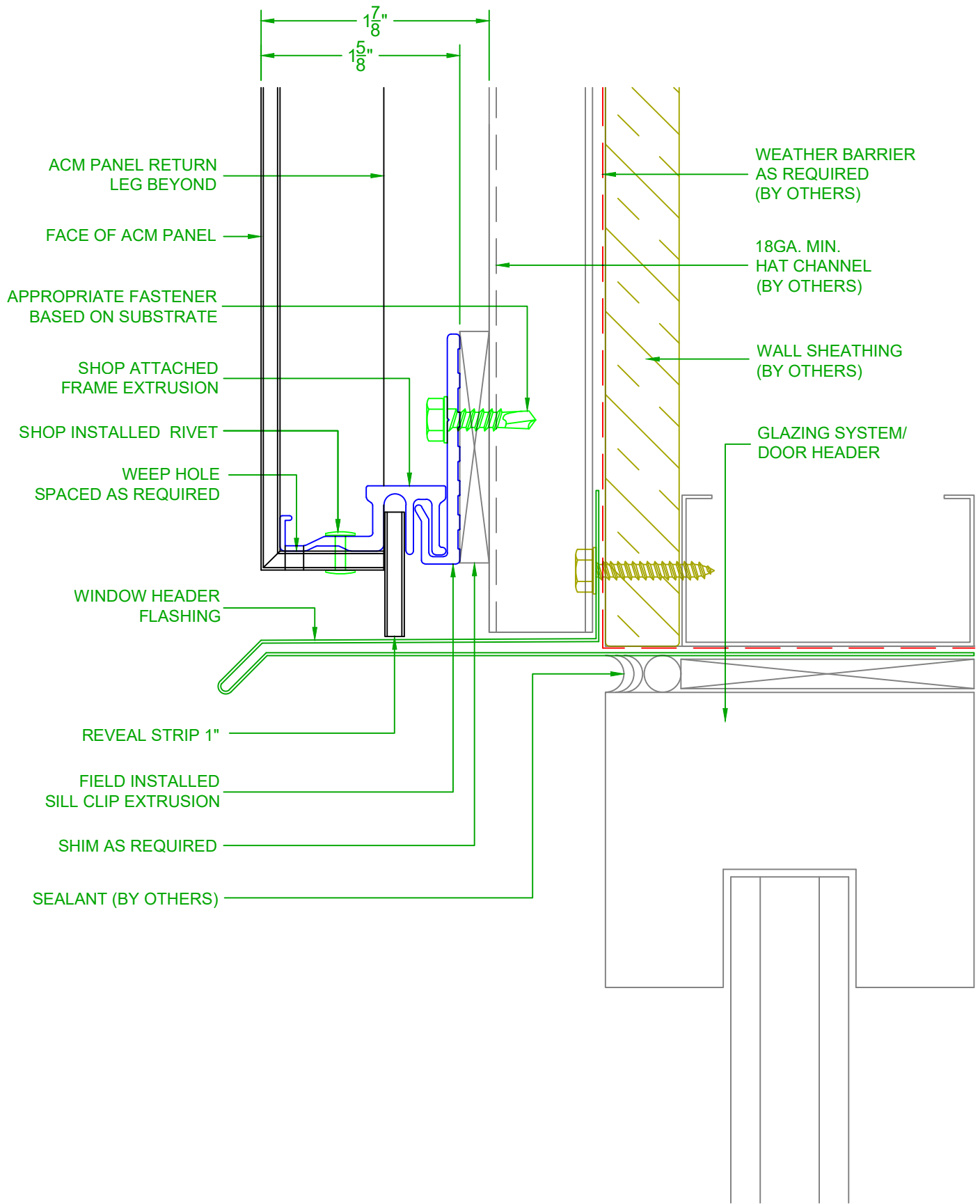


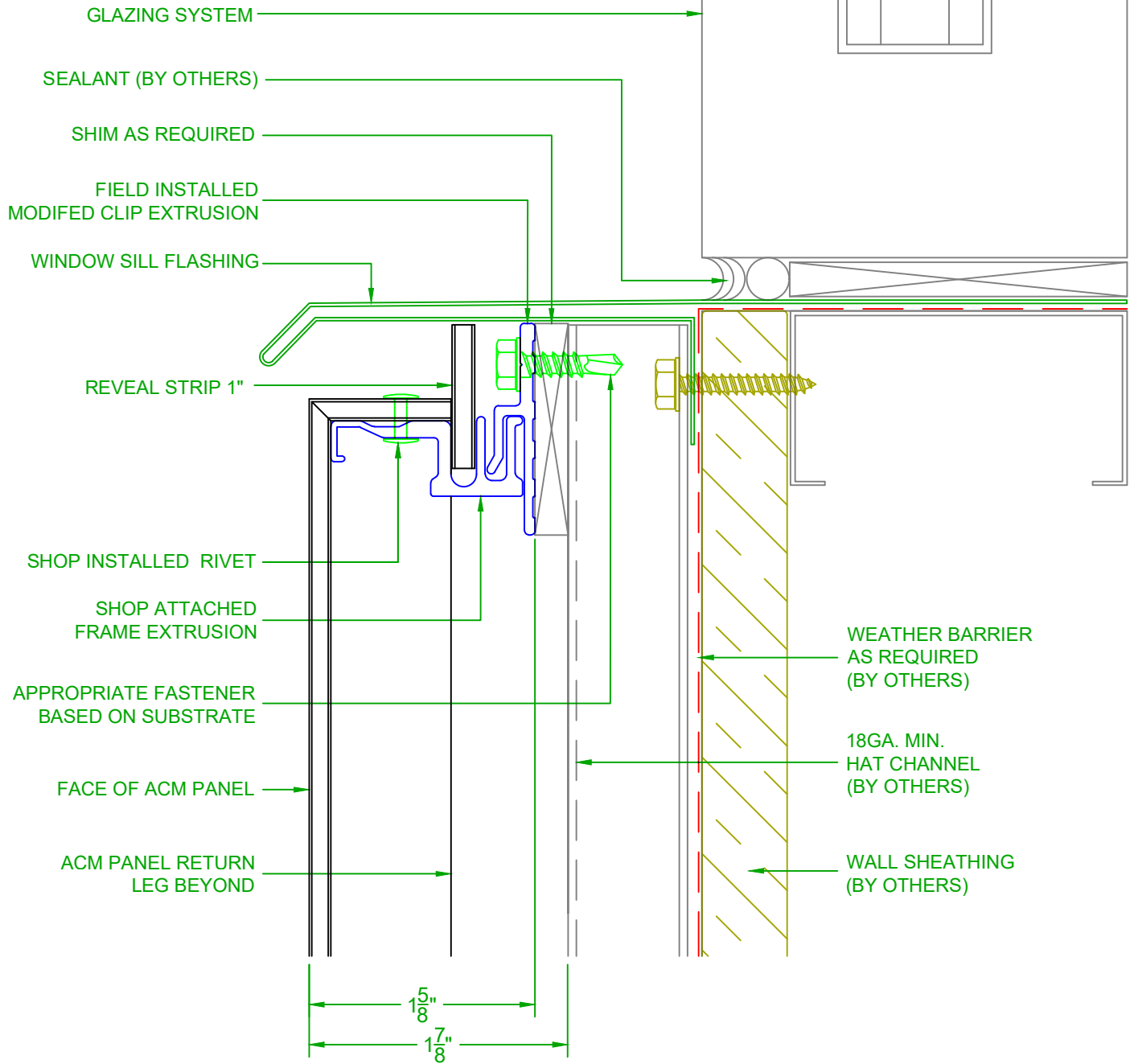


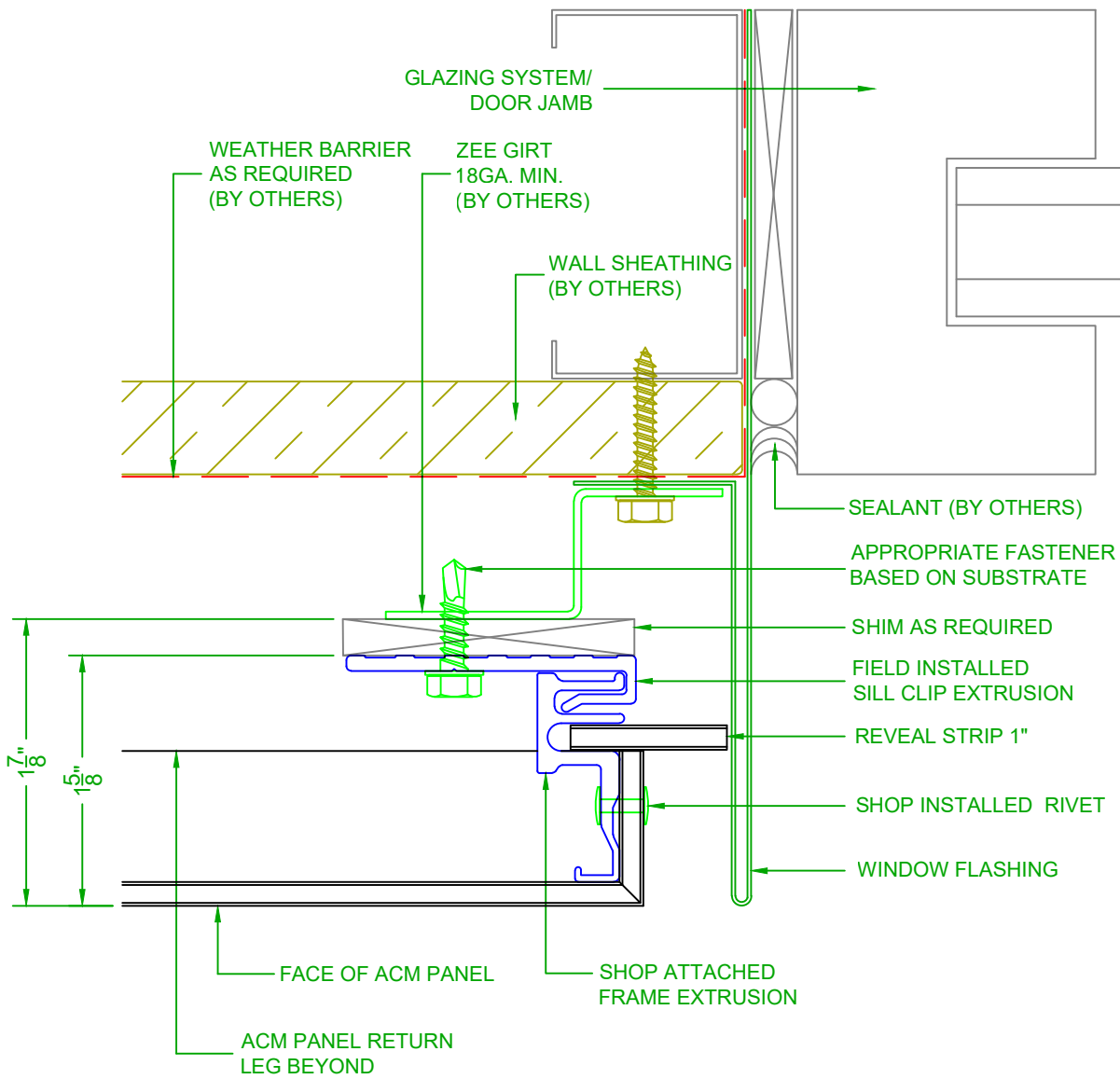


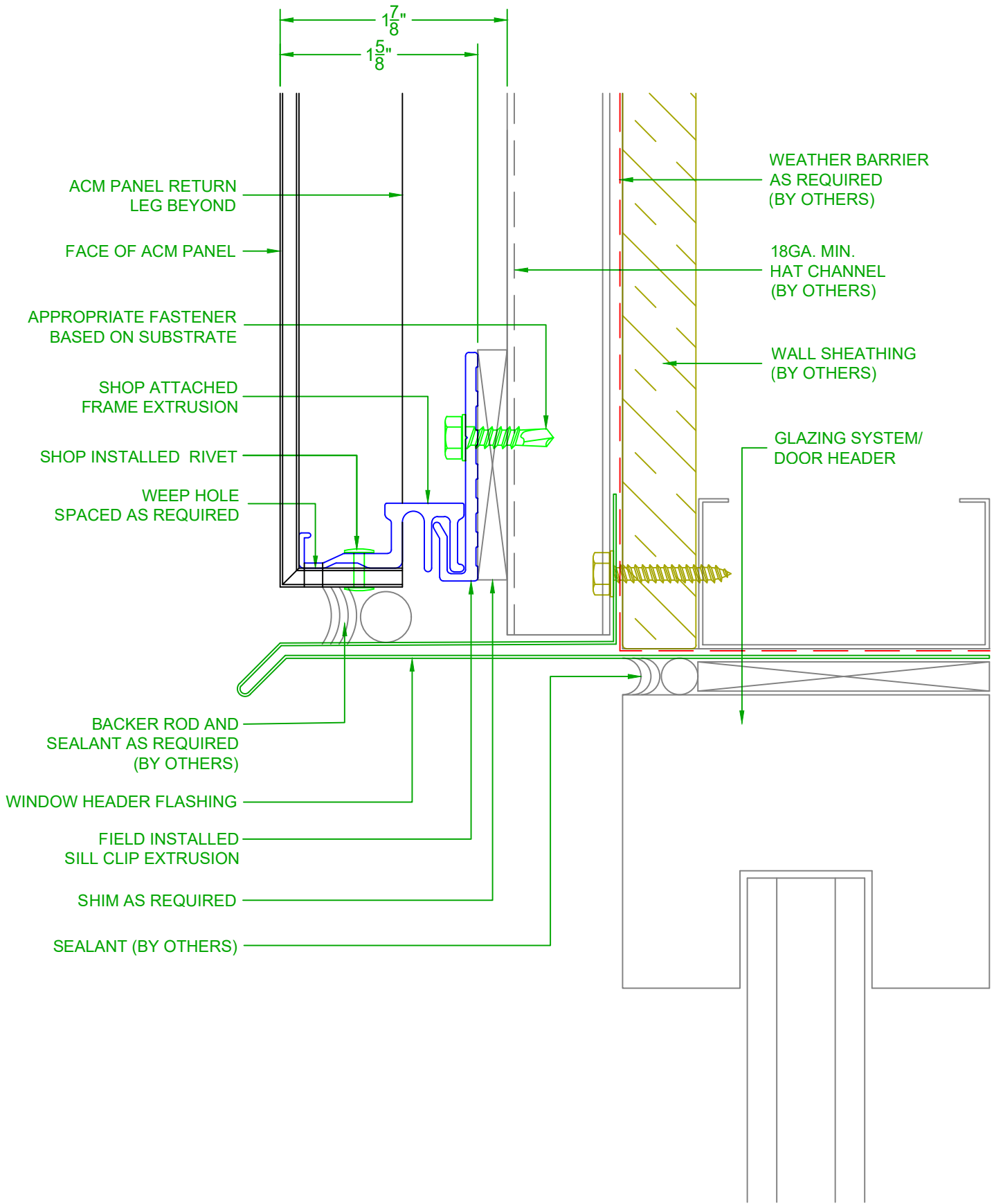


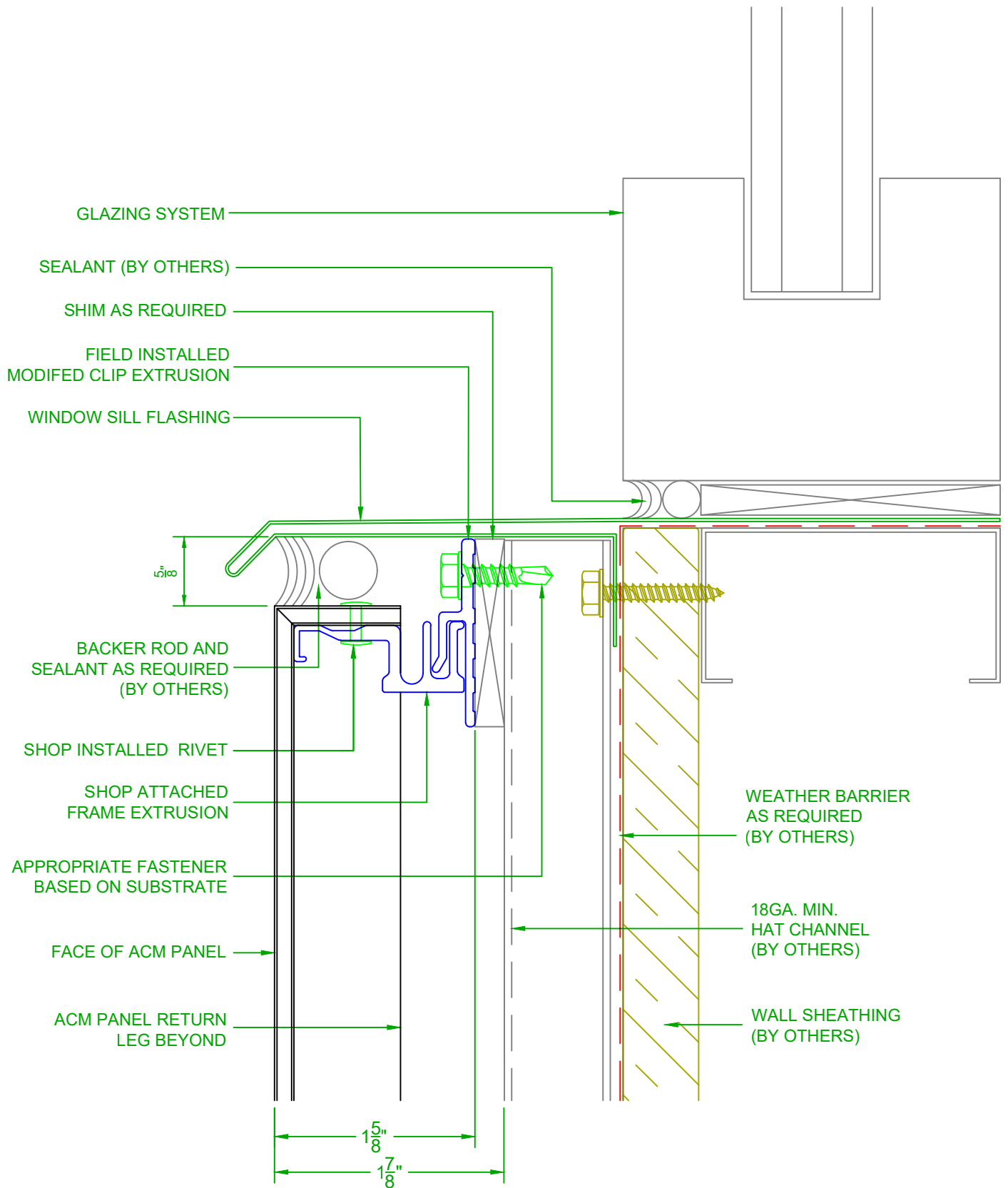




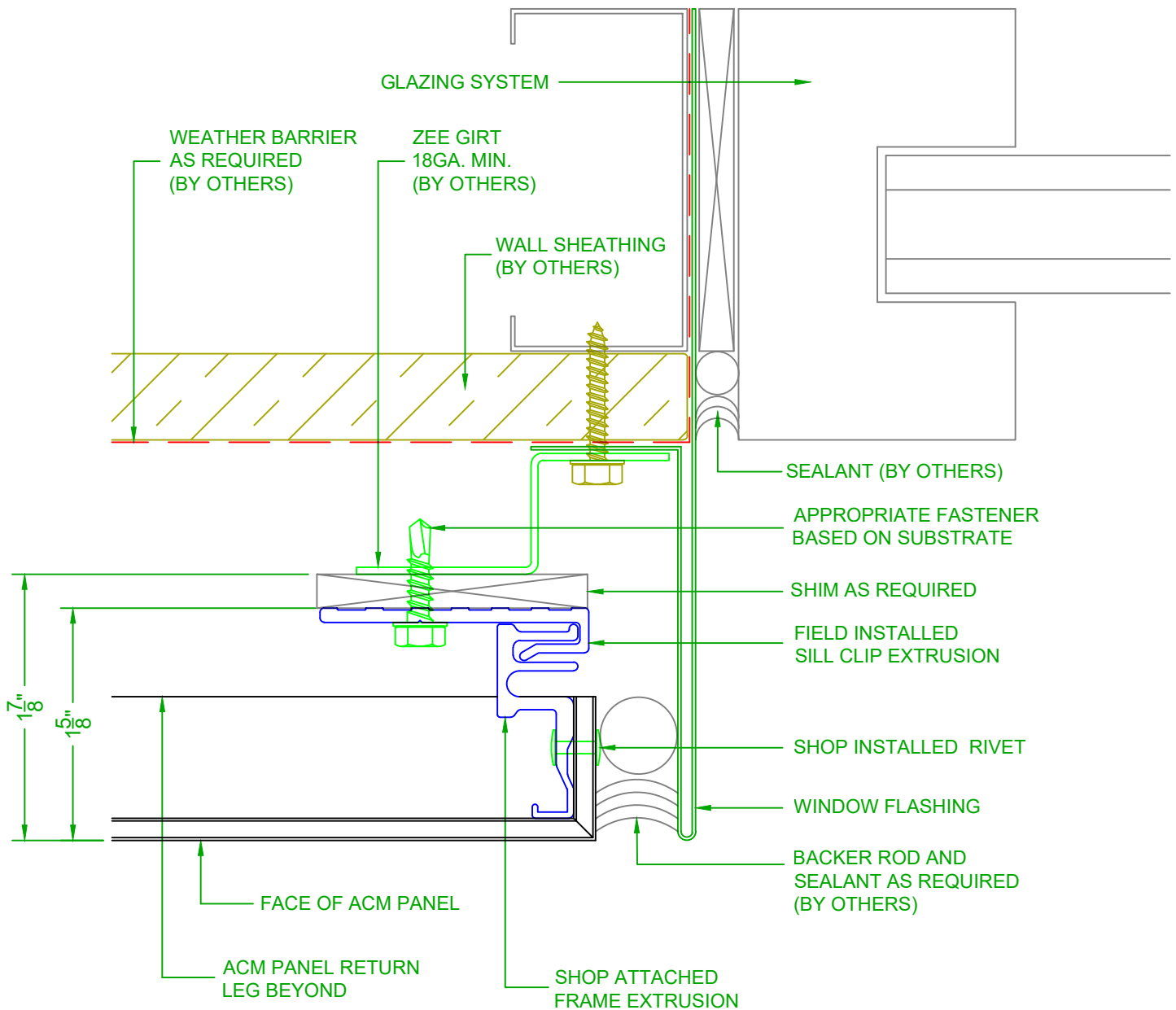


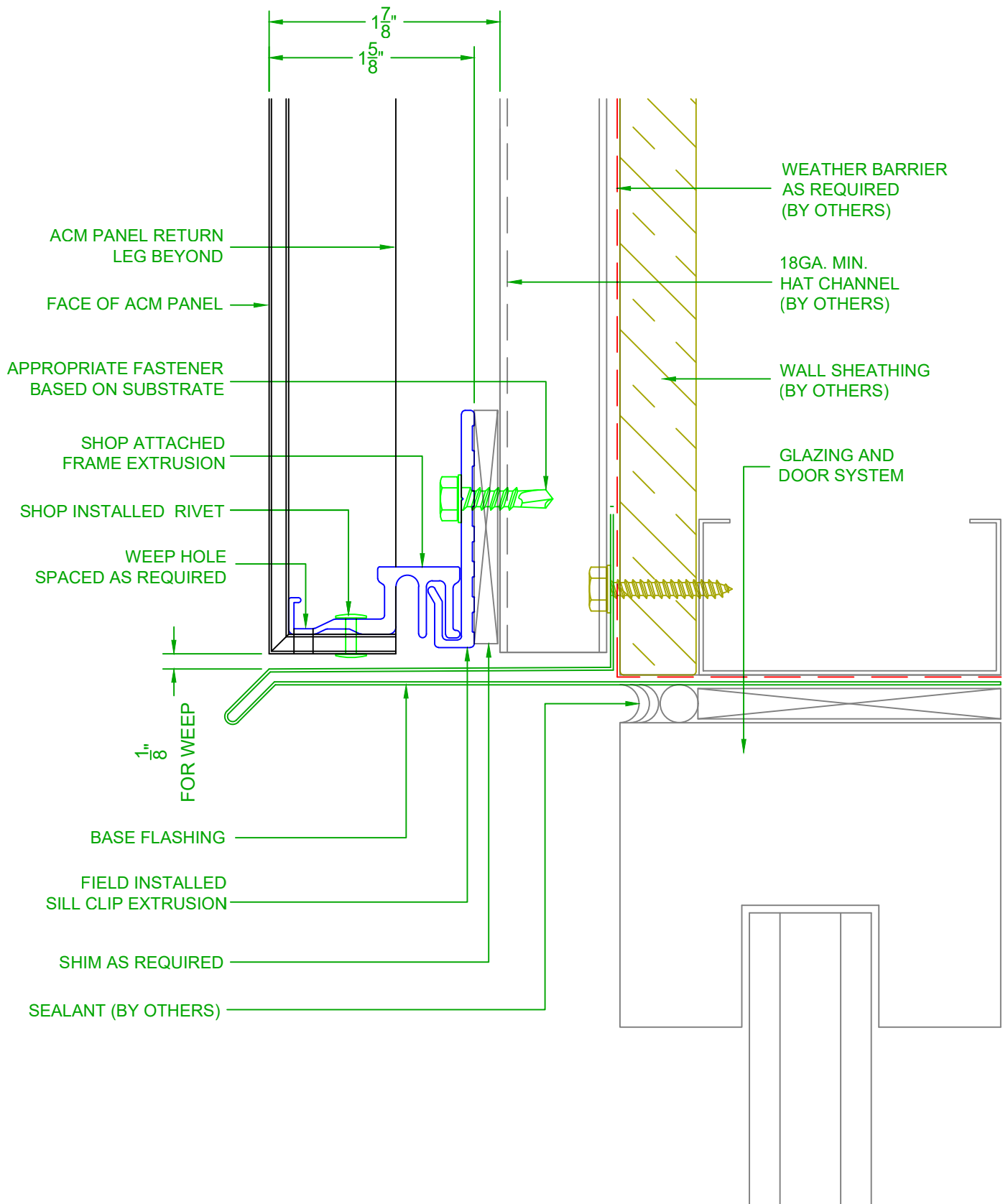


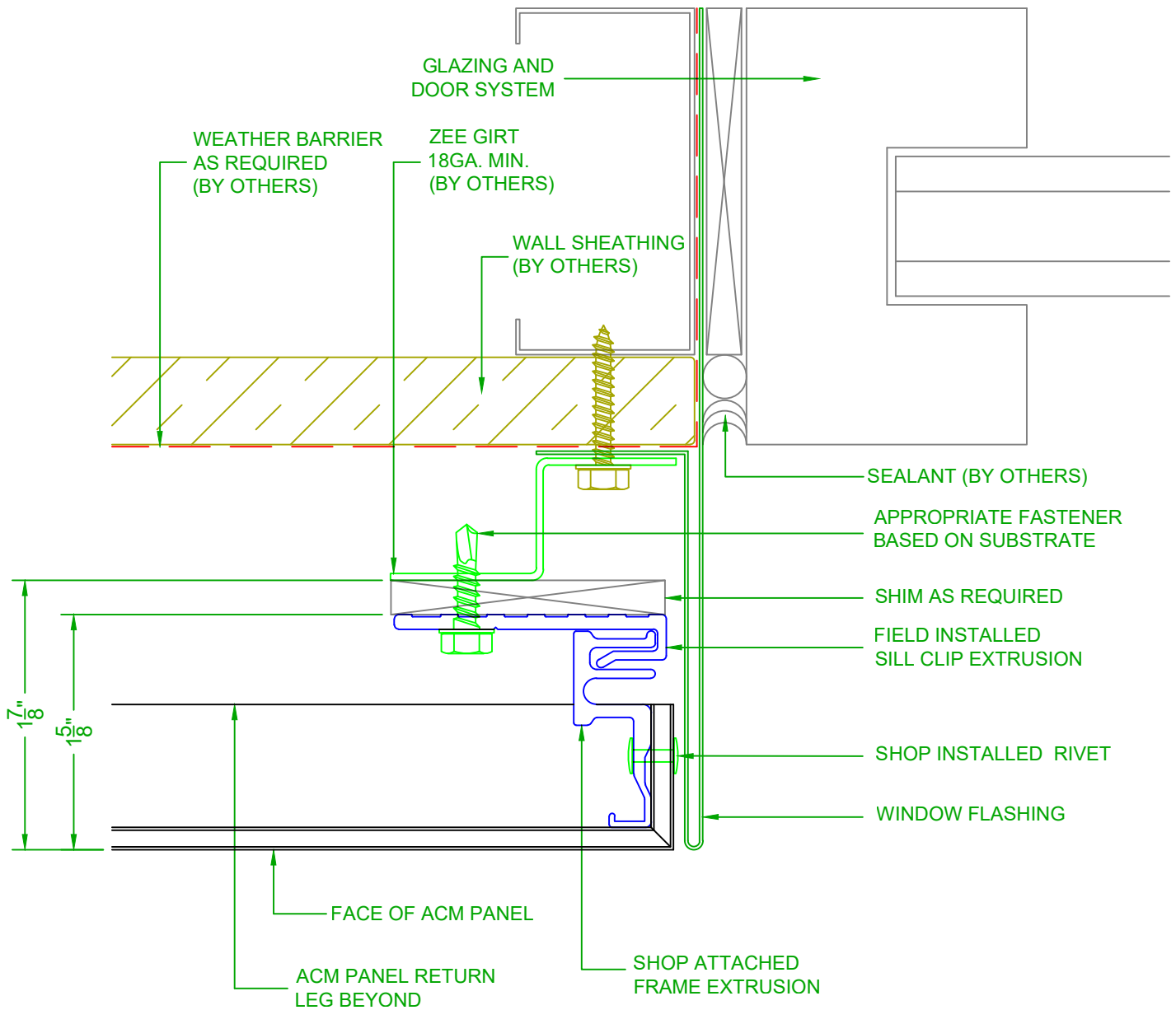












# FASCIA / SOFFIT DETAIL

SYSTEM - 4MM A1000

1/26/24

SCALE: NTS

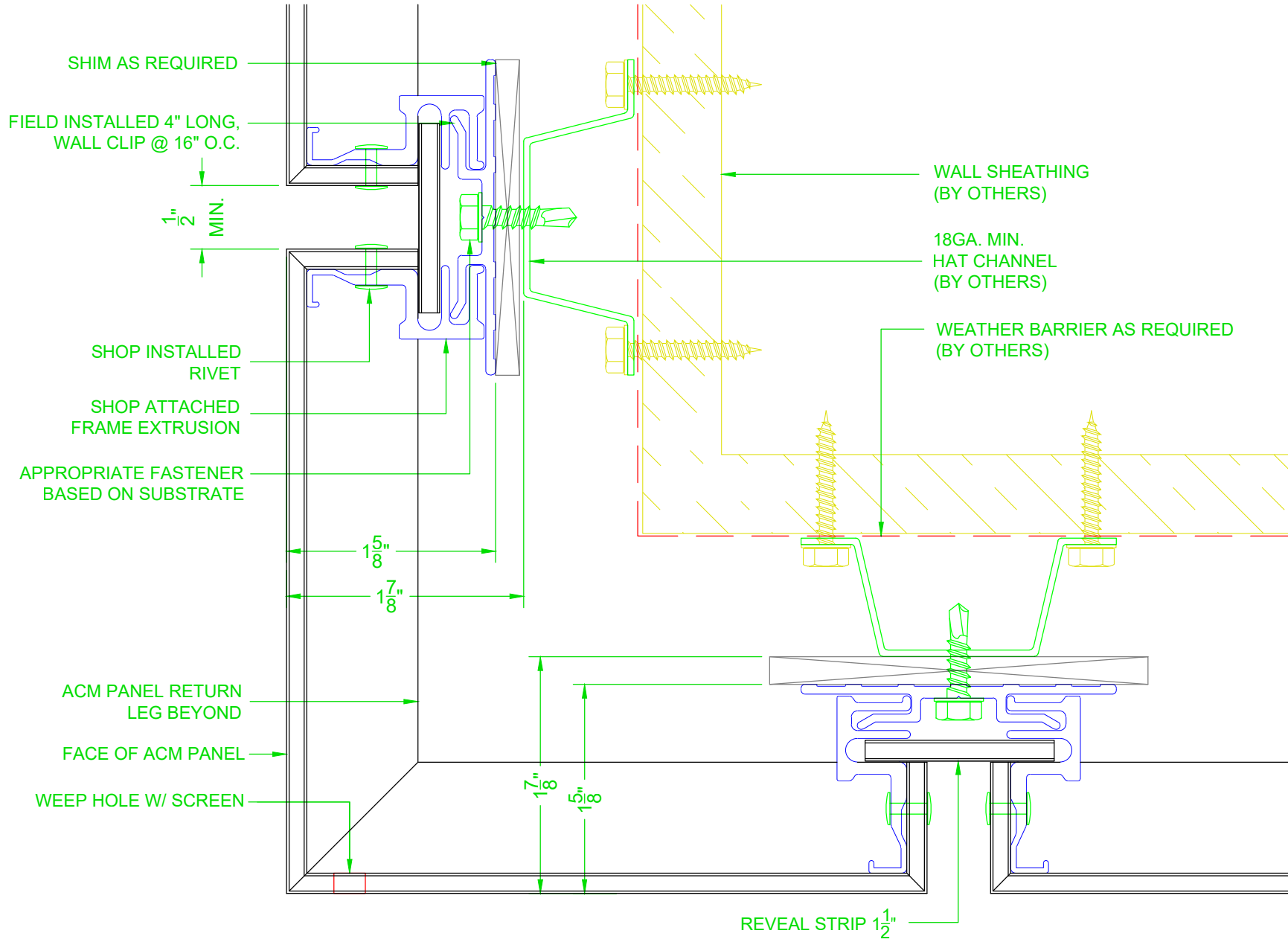
2529 W. Jackson St.  
Phoenix, AZ 85298  
PHONE: (602) 275-1676  
FAX: (602) 275-1739

**Visage**

**Lumabuilt**

FASCIA

SOFFIT



SHIM AS REQUIRED

FIELD INSTALLED 4" LONG, WALL CLIP @ 16" O.C.

1/2" MIN.

SHOP INSTALLED RIVET

SHOP ATTACHED FRAME EXTRUSION

APPROPRIATE FASTENER BASED ON SUBSTRATE

1 5/8"

1 7/8"

ACM PANEL RETURN LEG BEYOND

FACE OF ACM PANEL

WEEP HOLE W/ SCREEN

7/8"

5/8"

REVEAL STRIP 1 1/2"

WALL SHEATHING (BY OTHERS)

18GA. MIN. HAT CHANNEL (BY OTHERS)

WEATHER BARRIER AS REQUIRED (BY OTHERS)

# TYP. ACM COPING CAP DETAIL

SYSTEM = 4MM A1000

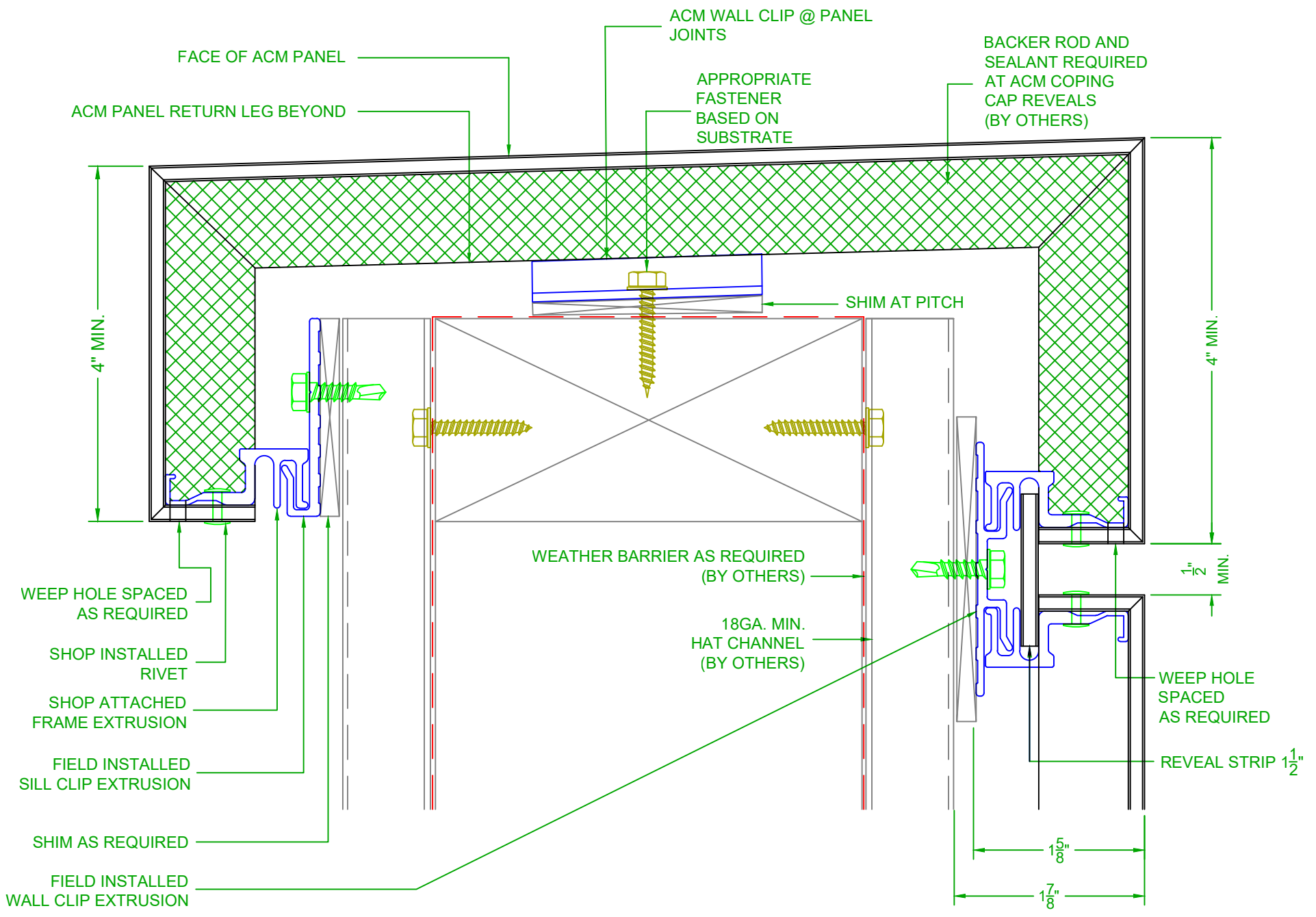
1/26/24

SCALE: NTS

2529 W. Jackson St.  
Phoenix, AZ 85298  
PHONE: (602) 275-1676  
FAX: (602) 275-1739

**Visage**

**Lumabuilt**



WEEP HOLE SPACED AS REQUIRED

SHOP INSTALLED RIVET

SHOP ATTACHED FRAME EXTRUSION

FIELD INSTALLED SILL CLIP EXTRUSION

SHIM AS REQUIRED

FIELD INSTALLED WALL CLIP EXTRUSION

SHIM AT PITCH

WEATHER BARRIER AS REQUIRED (BY OTHERS)

18GA. MIN. HAT CHANNEL (BY OTHERS)

WEEP HOLE SPACED AS REQUIRED

REVEAL STRIP 1 1/2"

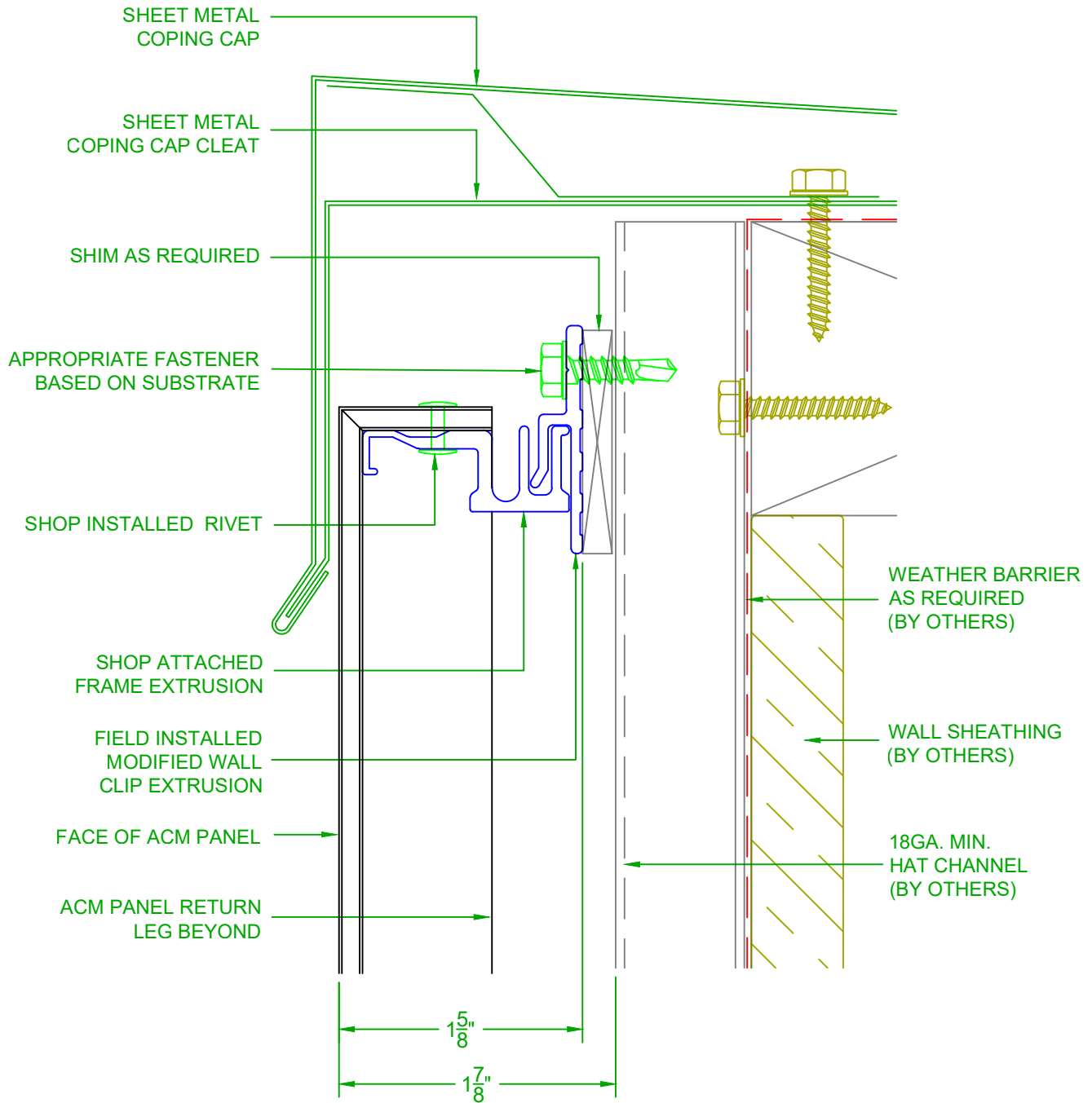
1 5/8"

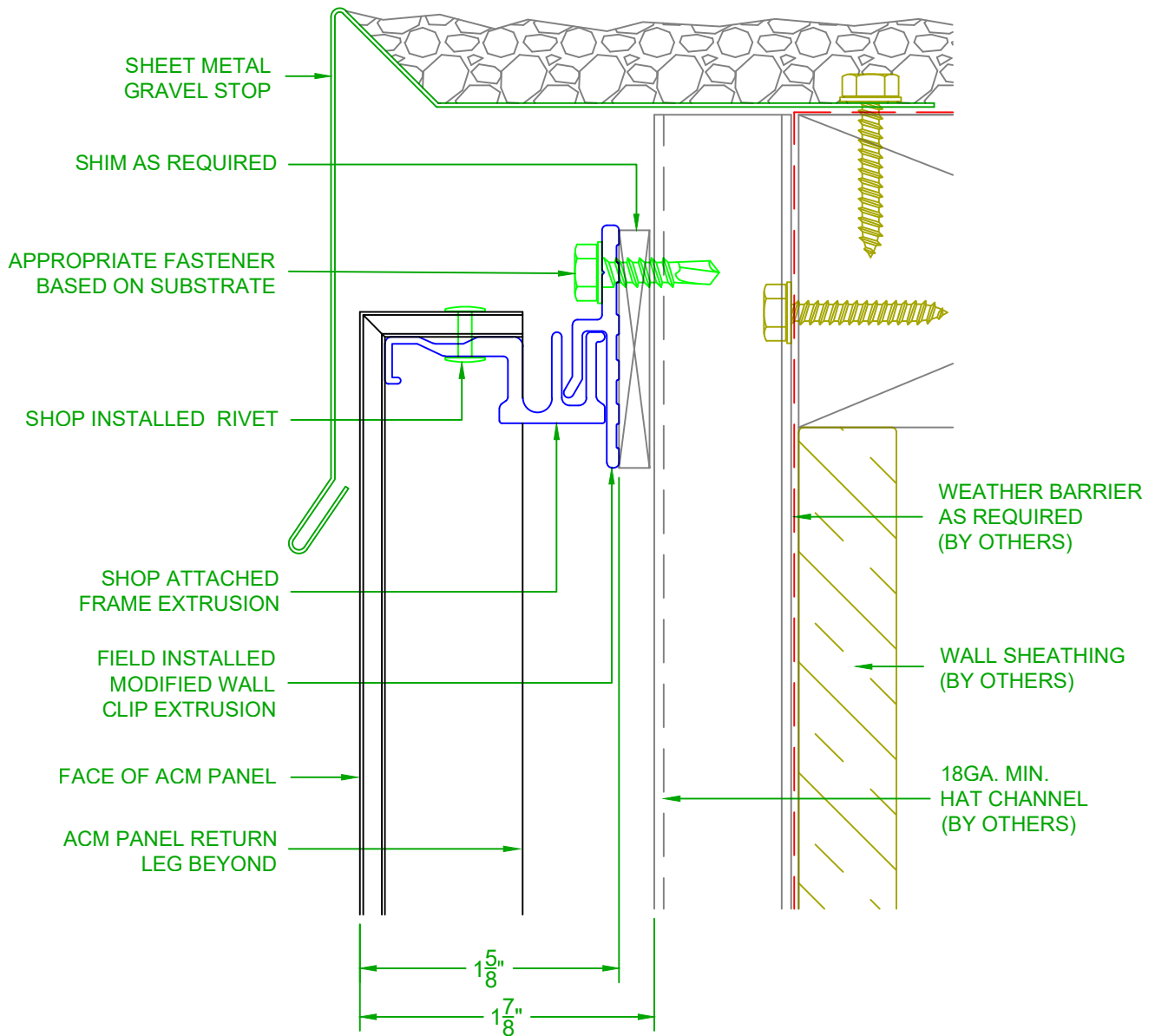
1 7/8"

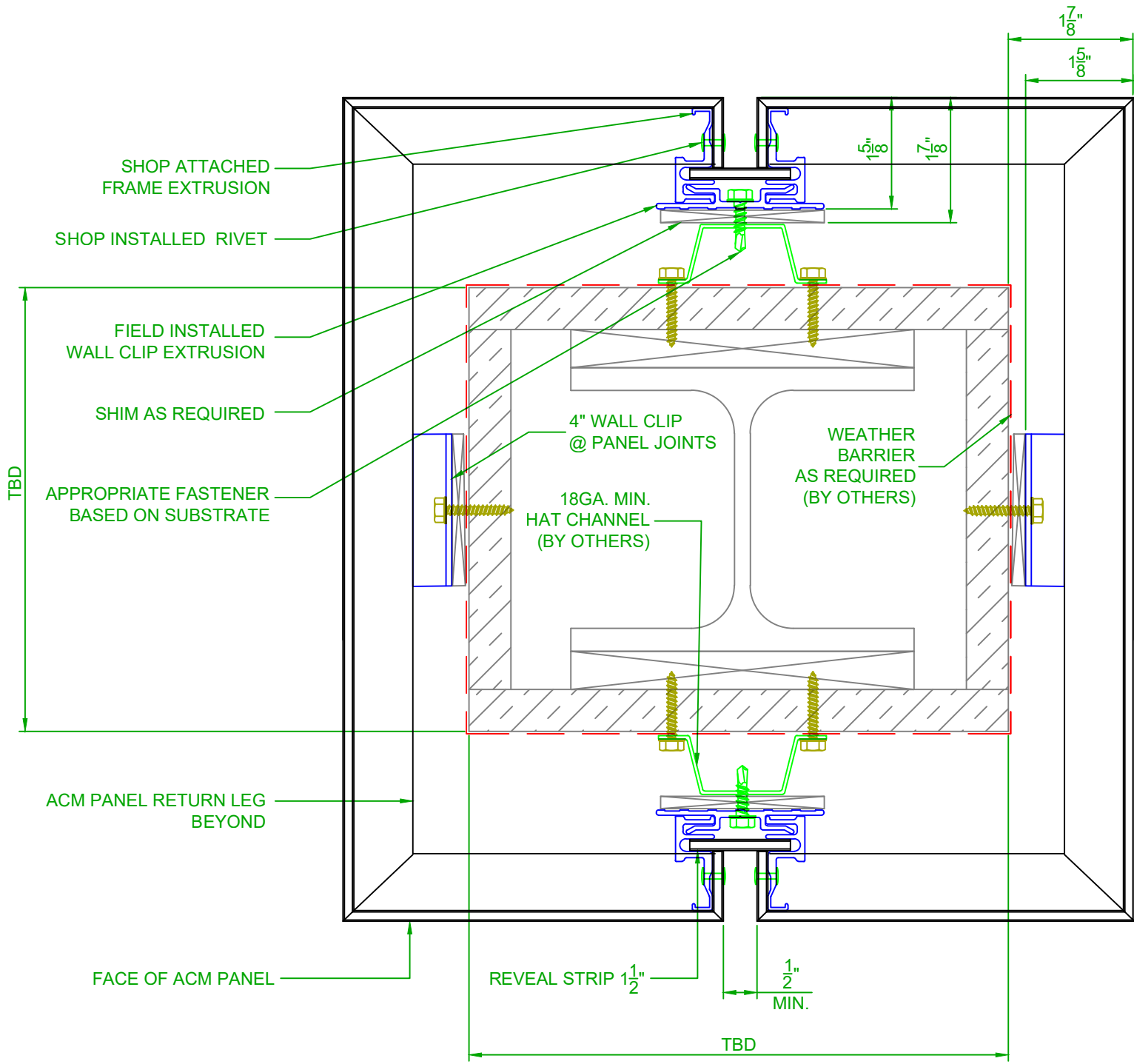
1 1/2" MIN.

4" MIN.

4" MIN.







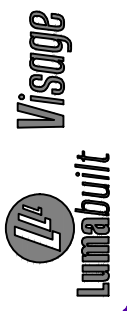
COLUMN COVER DETAIL

SYSTEM = 4MM A1000

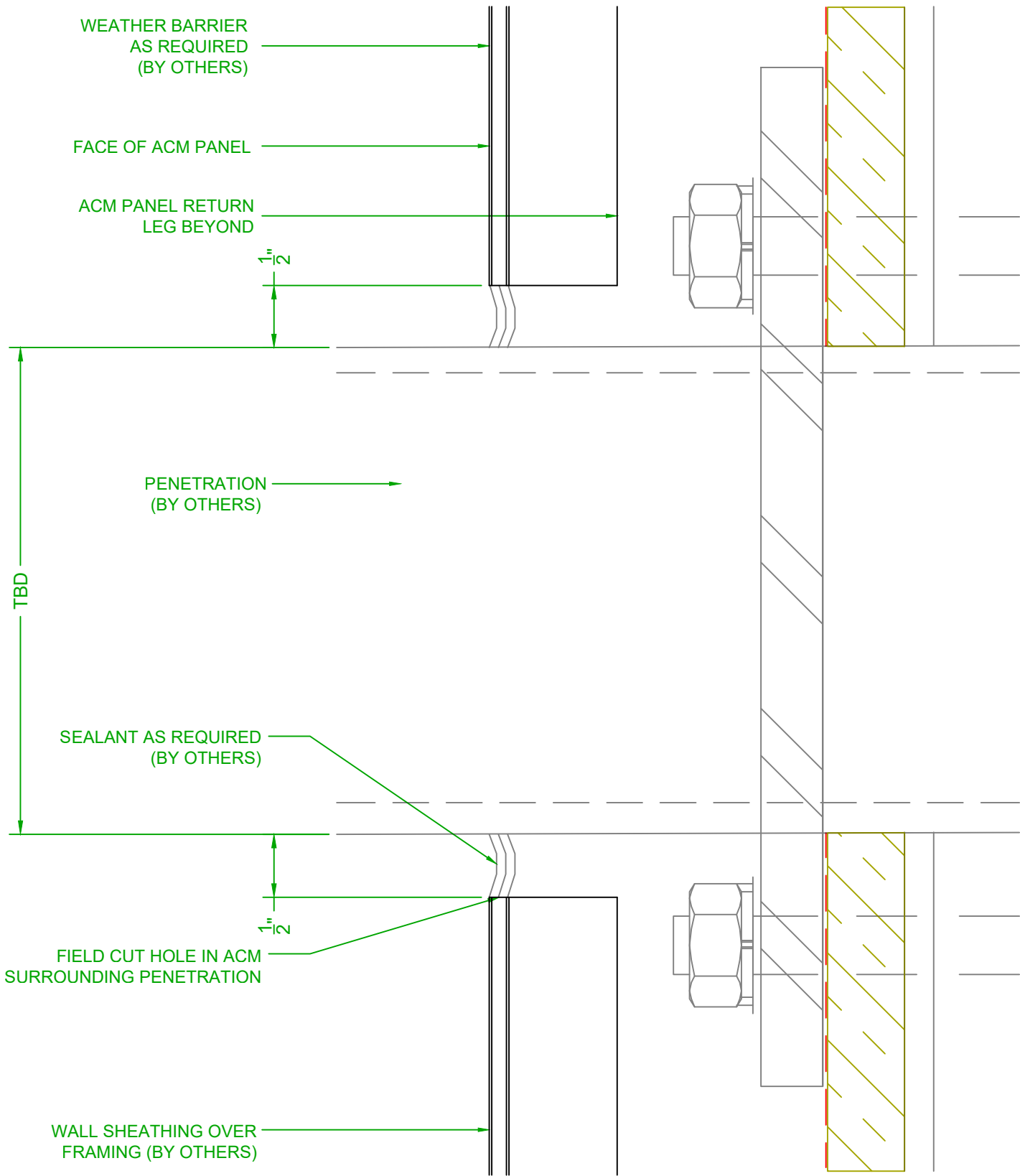
1/26/24

SCALE: NTS

2529 W. Jackson St.  
 Phoenix, AZ 85298  
 PHONE: (602) 275-1676  
 FAX: (602) 275-1739







# LIGHT STRIP DETAIL

SYSTEM = 4MM A1000

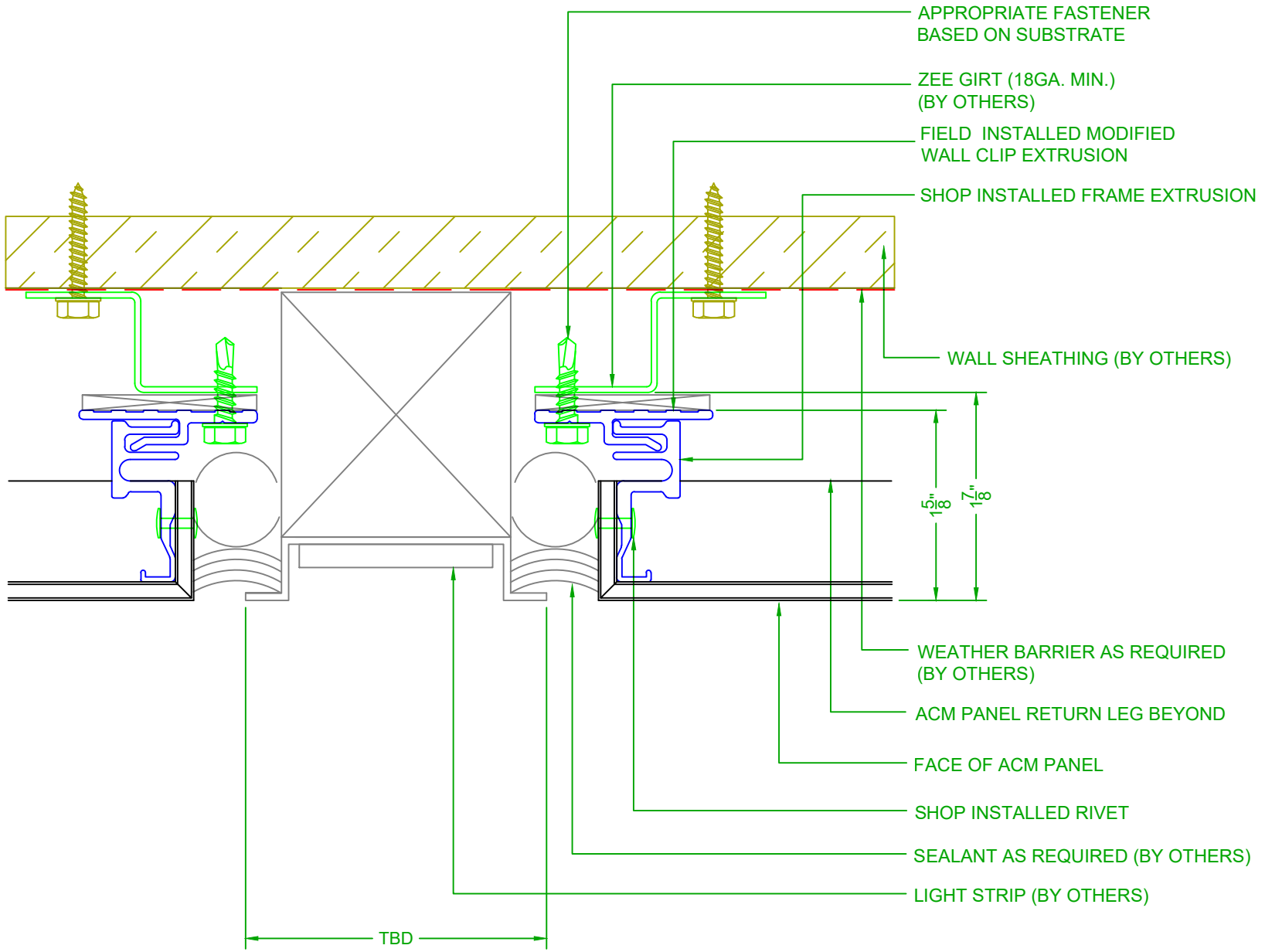
1/26/24

SCALE: NTS

2529 W. Jackson St.  
Phoenix, AZ 85298  
PHONE: (602) 275-1676  
FAX: (602) 275-1739

**Visage**

**Lumabuilt**



SHOP INSTALLED FRAME EXTRUSION

FIELD INSTALLED MODIFIED WALL CLIP EXTRUSION

WALL SHEATHING (BY OTHERS)

ZEE GIRT (18GA. MIN.) (BY OTHERS)

APPROPRIATE FASTENER BASED ON SUBSTRATE

1 7/8"  
1 5/8"

WEATHER BARRIER AS REQUIRED (BY OTHERS)

EDGE FLASHING

ACM PANEL RETURN LEG BEYOND

FACE OF ACM PANEL

SHOP INSTALLED RIVET

BACKER ROD AND SEALANT AS REQUIRED (BY OTHERS)

