

USES:

Façade & Curtain Wall Cladding, Interior Walls & Ceilings Commercial, Multifamily Residential, Healthcare, Hospitality, Entertainment & a Variety of Other Building Types

Visage

Expert ACM Fabrication

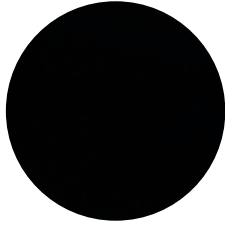


Visage is an aluminum composite material system (ACM). Visage is available in sheets or a fully fabricated rainscreen. It is also available as components for field fabrication. Fabricated Visage panels are available in standard or custom designs. Visage is a fully integrated and tested system.

STOCKING COLORS



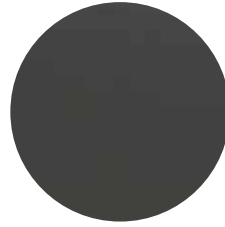
SL-1824 BONE WHITE



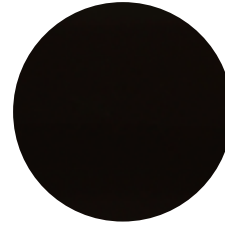
SL-1012 BLACK



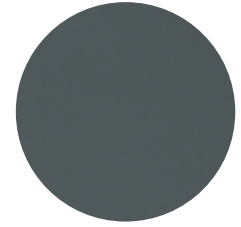
MI-2002 SILVER*



MI-2117 PEWTER*



SL-1050 DARK BRONZE*



SL-1831 MOUSE GREY

*For accurate color selections please request color samples.
* Directional*

LUMABUILT PROVIDES ACM FABRICATION OF OUR TESTED SYSTEMS

- *A1000 ACM Rainscreen System*
- *A1000NF ACM Non-Exposed Fasteners Rainscreen System*
- *A2000 ACM Wet Seal Rainscreen System*

ALSO AVAILABLE AT LUMABUILT

- Full Line of Extrusions
- ACM Manufacturing Partners
- Visage Flat Sheets
- Engineering Services



CUSTOM COLORS & MATCHING AVAILABLE

*Special order custom colors have a 5,500sf minimum order.
10-12 Week lead time.*

FEATURES & BENEFITS

- Architectural ACM sheets for interior or exterior applications
- FR (Fire Resistant mineral core) standard
- Available in 4mm (standard), 6mm thickness (upon request)
- Face & Backer Sheet - 0.5 mm (0.0197"), A3000 Series Aluminum Alloy
- Finishes: PVDF - Solid & Mica, specialty Woodgrain Finishes also available
- Standard ACM sheet size is 62" x 196"; A1000 Maximum fabricated panel is 60" x 194"; A1000NF Maximum fabricated panel is 58" x 192"
- Matching flat sheets available in 36" x 120" x 0.032, 0.040, & 0.050 Aluminum (min order qty 125 sheets /color-gauge)
- Variety of colors and finishes in standard offering & color matching services available
- PPG Paint Finish 20 Year Warranty / Panel 10 Year Warranty
- Fully ICC certified (ESR-5448)
- Ask us about our other product lines



Approved
Continuing
Education

