

# LUMAPLATE

FULL-DEPTH ALUMINUM PLATES

## LUMAPLATE SYSTEMS DATA SHEET

Lumabuilt's Lumaplate Systems are engineered to meet project-specific design and performance requirements. Each system is custom-fabricated from architectural aluminum plate in a range of available thicknesses to achieve the desired strength, rigidity, and visual expression. Panels are delivered with pre-mounted frame and stiffener extrusions, along with all required wall, sill, and modified clip components for efficient installation. Each assembly includes matching aluminum plate reveal color strips, standard at 1.5" wide for a 0.5" reveal system, with optional widths up to 12" to support design flexibility.

### Available Finishes

Lumaplate Systems are available in an endless variety of finishes including metallic, rust, stone, marble, pearlescent, woodgrain, and solid colors.

### Warranty

Lumabuilt Fabricated Assembly: 1 year

Aluminum Plate Finish: Varies by finish type

### Specifications

Maximum Fabricated Panel Size	46" x 118"
Plate Thickness	.08"
	.09"
	.10"
	.125"
System Depth	See Table

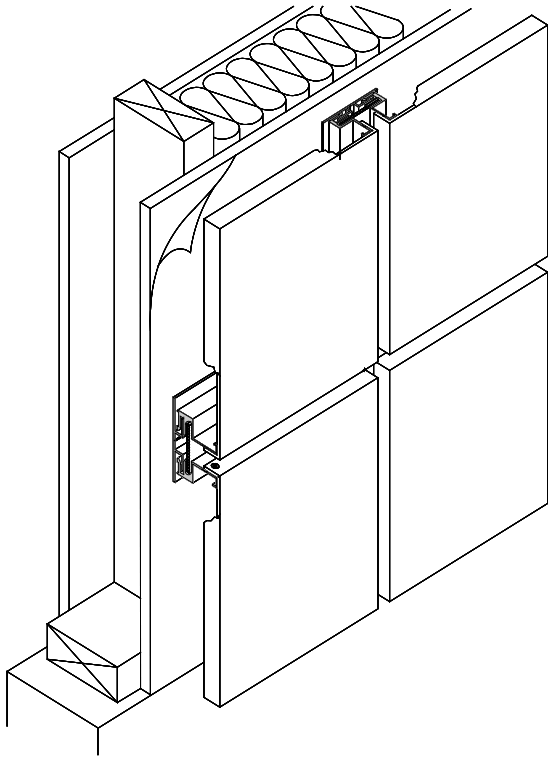
### Aluminum Plate Testing Information

NFPA 285 ASTME2768 ASTME84 ASTME136	Fire Performance
AAMA 2605	Finish Durability



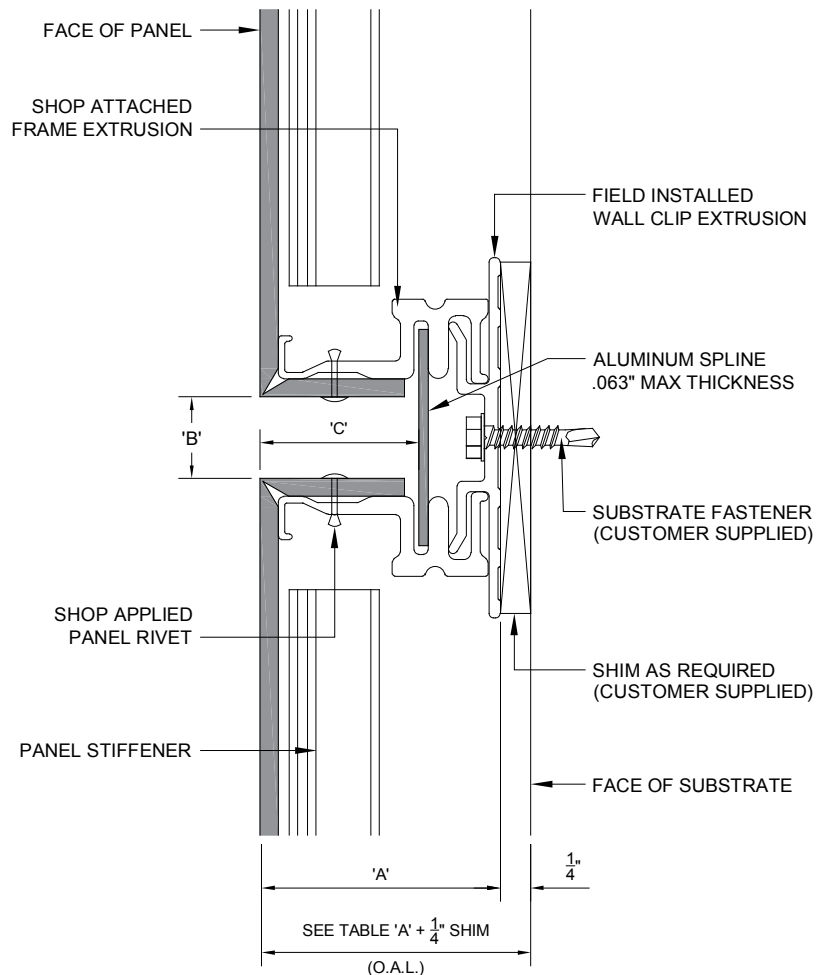
### AP400 RAINSCREEN SYSTEM

The AP400 Rainscreen System is a drained and back ventilated cladding solution engineered to manage incidental water through pre-drilled weep holes that allow controlled drainage and ventilation. Each panel assembly includes pre-mounted frame and stiffener extrusions, along with reinforced corner bracing for added structural stability. Designed for straightforward installation using standard tools, the AP400 provides a reliable, high-performance envelope that combines precision fabrication with ease of use.



#### System Depth

PLATE THICKNESS	A	B	C
.080"	1.638"	.655"	1.056"
.090"	1.648"	.635"	1.066"
.100"	1.658"	.615"	1.076"
.125"	1.683"	.565"	1.101"



LUMAPLATE SERIES RAINSCREEN SYSTEM  
(SECTION A - HORIZONTAL & VERTICAL PANEL JOINT)

### EXTRUSIONS

Lumabuilt offers a proprietary line of extrusions for riveted, concealed, and wet systems. Every component is made from 6063-T6 aluminum and is designed for compatibility with our Lumaplate Systems. All fabricated systems include the necessary extrusions for installation.

