

FABRICATED
ACM SYSTEMS

A1000/A1000NF Installation Guide

 **Lumabuilt**





IMPORTANT

The installation methods outlined in this guide are intended to provide general information and recommended procedures for installing our Fabricated ACM Systems. These instructions are designed to assist experienced installers by illustrating typical installation techniques and best practices.

This guide does not address every possible condition, application, or site-specific requirement. It is the responsibility of the installer, contractor, and/or project team to ensure that all installations comply with applicable local building codes, regulations, and safety standards for the jurisdiction in which the product is being installed.

Lumabuilt does not install the product and has no control over jobsite conditions or installation practices. As such, Lumabuilt assumes no responsibility or liability for improper installation, failure to follow these guidelines, or personal injury resulting from incorrect use or installation of the product. Failure to adhere to Lumabuilt's recommended installation procedures may result in product failure and may void applicable warranties.

These instructions are intended for qualified professionals familiar with architectural cladding systems and standard construction practices. If project-specific conditions require clarification or deviation from these guidelines, please contact Lumabuilt prior to installation for technical support.

MATERIAL RECEIVING & INSPECTION

Upon delivery, inspect all panel assemblies and cartons for shipping damage, weather exposure, or visible defects before unloading.

Verify the following upon receipt:

- **Confirm all panels are undamaged and acceptable.**
- **Ensure all materials are clean and dry.**
- **Confirm all panels and accessories are included.**
- **Verify piece counts match the packing list.**

TRANSPORTATION & HANDLING

- Pallets containing fabricated systems must be moved only by forklift using forks of adequate length or approved extensions, and should remain in original, sealed packaging until material processing is ready to begin.
- Clean work gloves must be worn at all times when handling product to protect against sharp edges.
- Do not drag or slide panels during handling. All components must be lifted clear of contacting surfaces to prevent damage to painted finishes.

STORING MATERIAL

Fabricated ACM panels must be stored in a dry, well-ventilated area and protected from environmental and construction-related exposure. Improper storage may result in damage to the finished surface or core material and is not covered under warranty.

Panels may be stored horizontally or vertically under the following conditions:

- **Store panels flat using pallets or rack stands to prevent warping.**
- **Stack panels of the same size together to avoid scratching or denting.**
- **When stored vertically, support panels in a structural rack and place them on a rubber mat.**

IMPORTANT

- Document any shipping damage or packaging issues on the Bill of Lading and report them to the manufacturer immediately.
- The customer is responsible for filing freight claims with the carrier **within 24 hours of delivery**. Failure to do so may forfeit corrective action.
- Any material defect must be reported directly to the manufacturer.

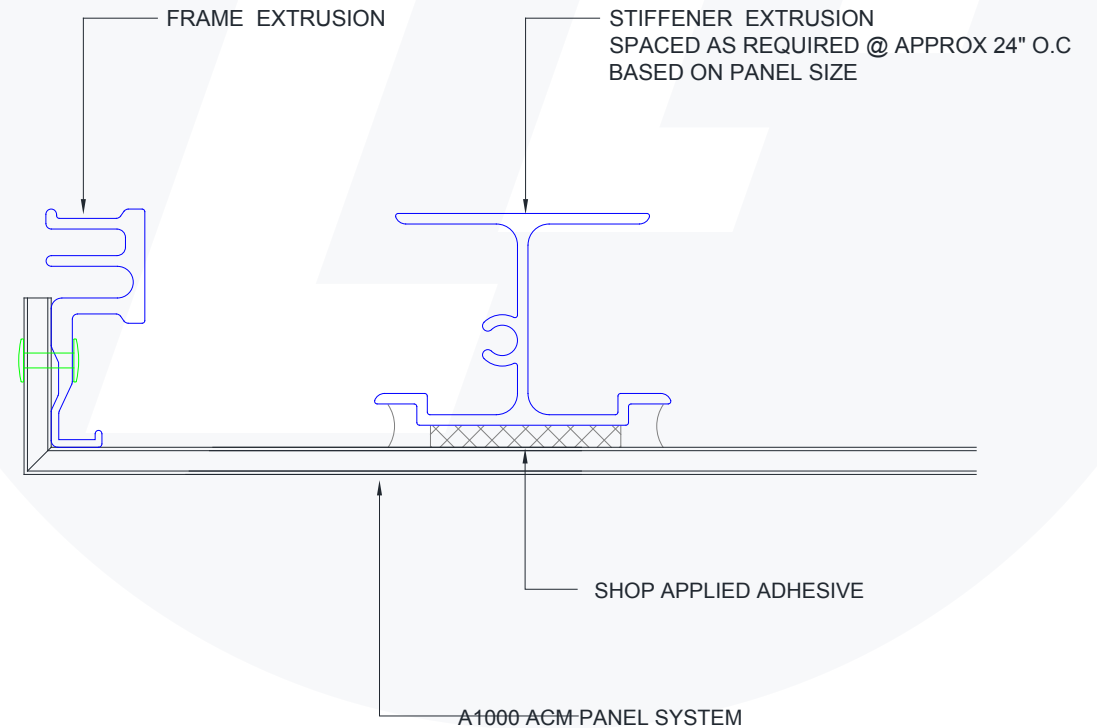
Failure to properly store and handle fabricated ACM panels will void any implied finish / product warranties.

SYSTEM COMPONENT OVERVIEW



FABRICATED PANELS

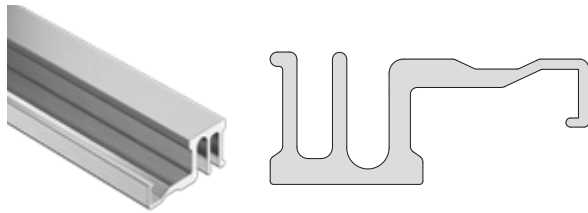
Fabricated system panels are delivered with frame and stiffener extrusions pre-mounted, where required. All panels include pre-drilled weep holes and are reinforced with angle bracing at the backside corners to strengthen the assembly. Each panel is labeled with a unique panel mark for placement identification, which corresponds to the provided installation grid and area maps.



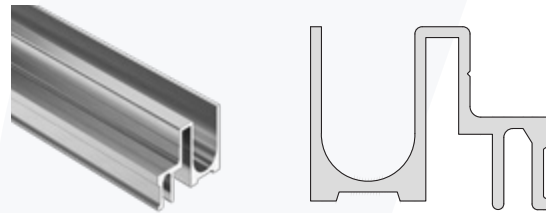
SYSTEM COMPONENT OVERVIEW

EXTRUSIONS

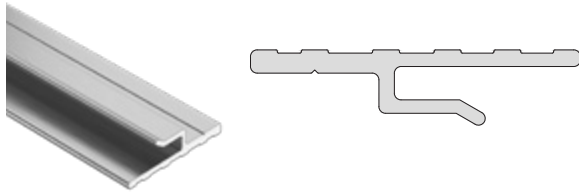
All required sill, wall clip, and modified extrusions are fabricated for the project and shipped with the panel assemblies to support complete, installation-ready systems.



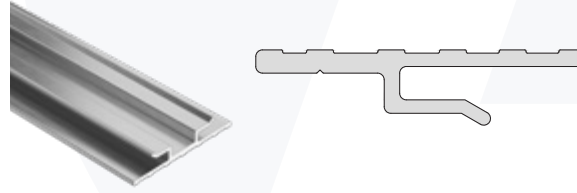
A1000/A2000 4mm Frame



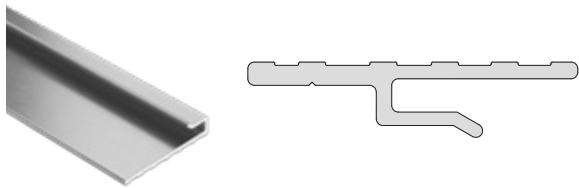
A1000NF 4mm Frame



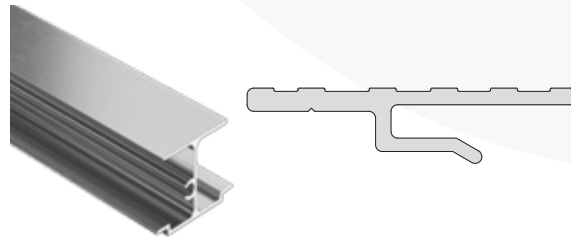
Modified Clip



Wall Clip



Sill Clip

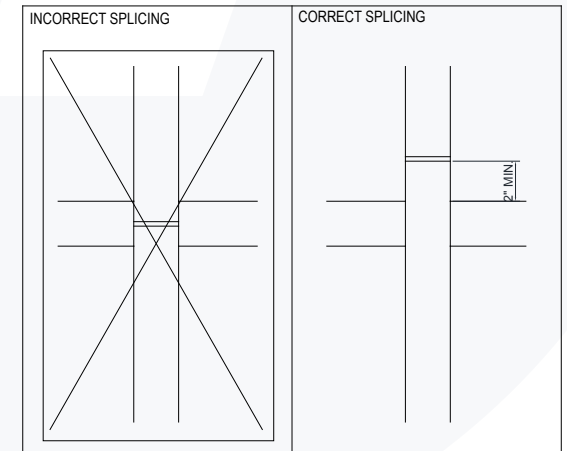


Stiffener

REVEAL COLORS STRIPS

ACM Reveal Color Strips are shipped with the panel assemblies and match the thickness of the project ACM. Standard strips are 1½" wide and supplied in varying lengths for a ½" reveal system, with optional widths available up to 12" for wider reveal conditions.

During installation, vertical reveal strips should pass through horizontal strips to maintain a continuous appearance. When cutting strips to size, add approximately 1" to the desired joint dimension (e.g., a ½" joint requires a 1½" strip). Remove all protective film from the strips prior to installation.



INSTALLATION SPECIFICATIONS

System Type

Non Structural, 'rainscreen principle' System

Work Flow

Progressive, moving up and across the elevation beginning at the bottom corner (typical).

Possible Structures

- Nailable substrate with moisture barrier
- Non-Nailable Substrate with Moisture Barrier (fastened directly to studs)

Expansion/Contraction Spacing

Typical joint spacing is 1/2" - 12" between abutting panels.

**Type of Fastener
(for mounting extrusions)**

#10 TEK Screw, 1 1/2" long, hex head

Fastening Schedule

Attach extrusions every 16" along length of molding

Insect Screen

Placed by the fabricator into weep holes to prevent debris/insects from getting into the cladding cavity. Weep holes should be facing downward.

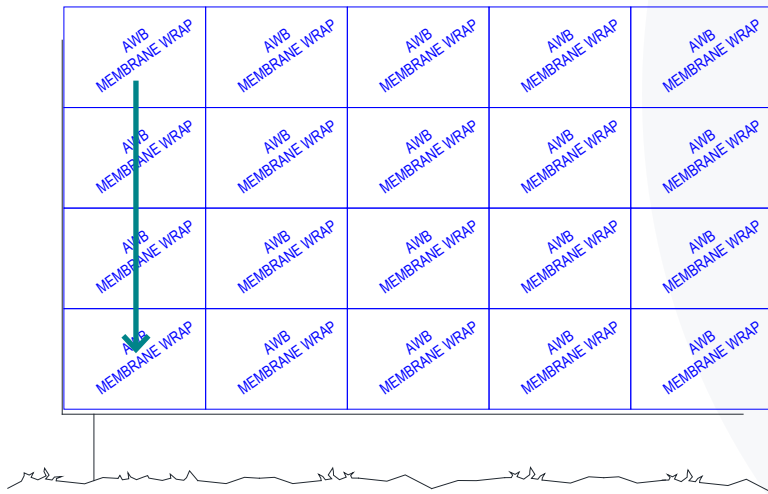
Reveal Color Strips

Placed between mounting extrusions to close the cladding cavity, range in size from 1 1/2" for 1/2" joint to 13" for 12" joints.

SYSTEM ASSEMBLY NOTES

ALIGNING & MARKING THE GRID

Using the approved grid layout, establish a base reference point at the lower left corner or at the lower center of the elevation. Once all weatherproofing and dry-in materials are in place, use chalk lines, levels, and a plumb bob to lay out the complete grid on the substrate. This layout allows for verification and adjustment before panel installation begins. Ensure the substrate surface is clear of obstructions or projections that could interfere with panel placement, and identify any locations where shimming may be required to achieve a plumb, level, and consistent plane.



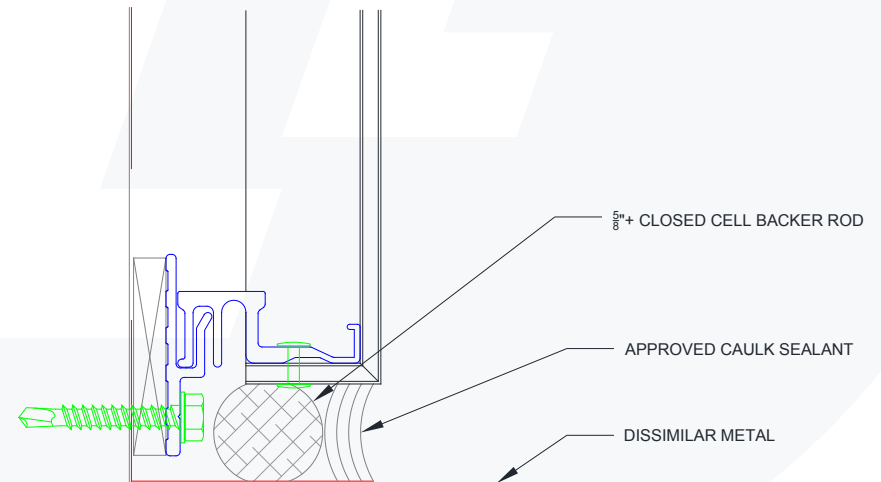
PROTECTIVE FILM

Fabricated ACM system panels are supplied with a strippable protective film on the painted surface to help prevent minor abrasions during handling and installation. The film should remain in place until installation is complete and must be removed within 45 days of installation. For best results, remove the film by pulling it back against itself in the same plane as the panel. Prolonged exposure to sunlight or delayed removal may make the film difficult to remove and can leave adhesive residue. While the protective film provides surface protection, panels must still be handled carefully, as scratches or dents can penetrate the film and damage the finished surface.

SEALANT

As a pressure-equalized rainscreen system, the A1000 exterior cladding system is designed to manage incidental water by allowing it to enter the cavity and drain through integrated weep holes. The system must be installed over a continuous air and moisture barrier. Where the system interfaces with dissimilar materials, properly detailed sealant joints are required to maintain moisture control.

Sealants must be selected and applied in accordance with the sealant manufacturer's recommendations, as improper products or preparation can result in staining, poor adhesion, or premature failure. Sealant should be applied at all dissimilar material interfaces, with a closed-cell backer rod installed prior to application and recessed approximately one-half the width of the joint to ensure proper sealant geometry.



PLEASE READ BEFORE THE PROCEEDING WITH THE FOLLOWING INSTALLATION STEPS

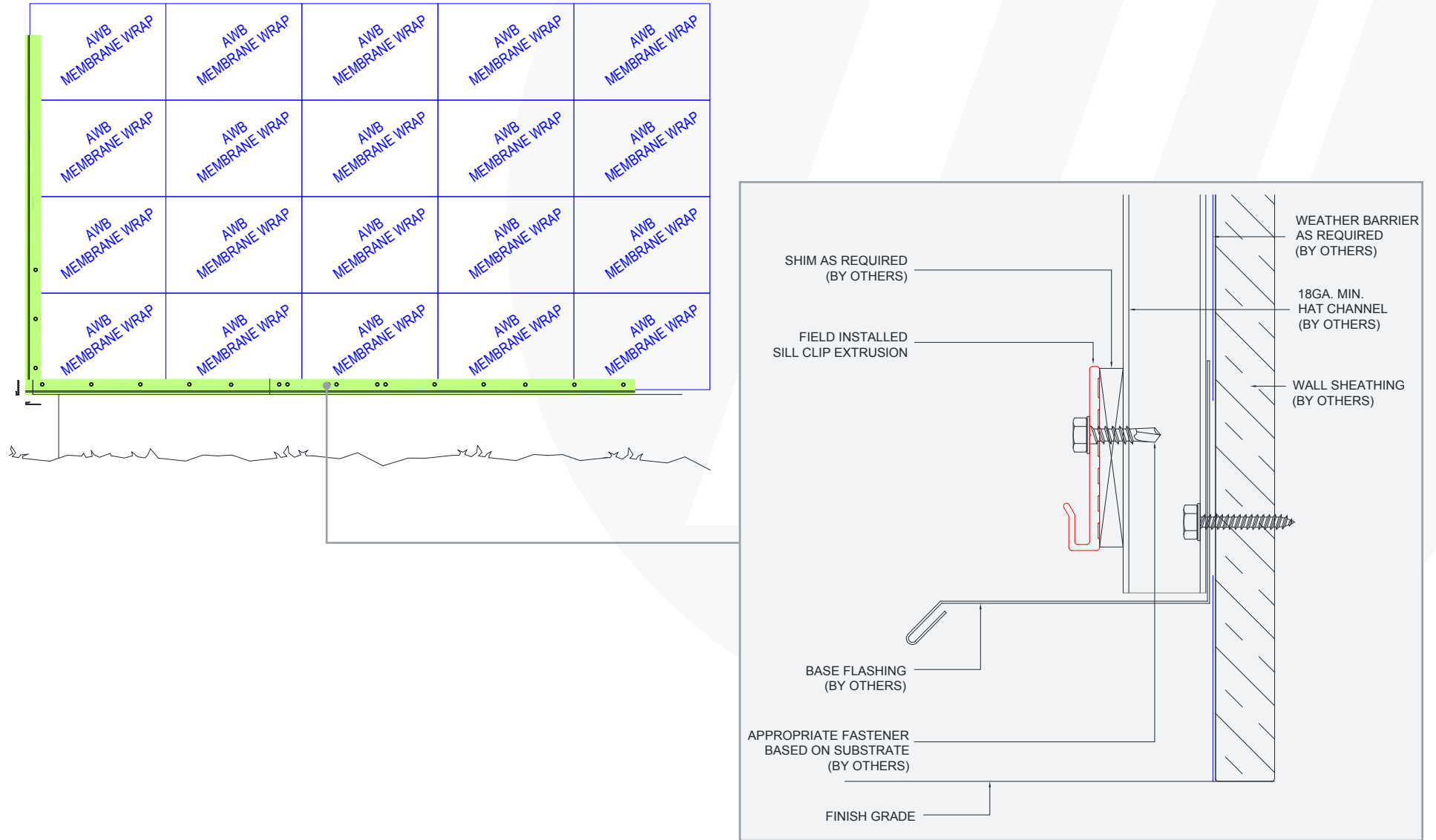
These guidelines are intended to illustrate the general installation approach and sequence. Actual procedures may vary based on project-specific conditions and applications.

For conditions not covered in this guide, including parapets or interfaces with dissimilar materials, refer to the Typical Details or contact Lumabuilt for guidance.



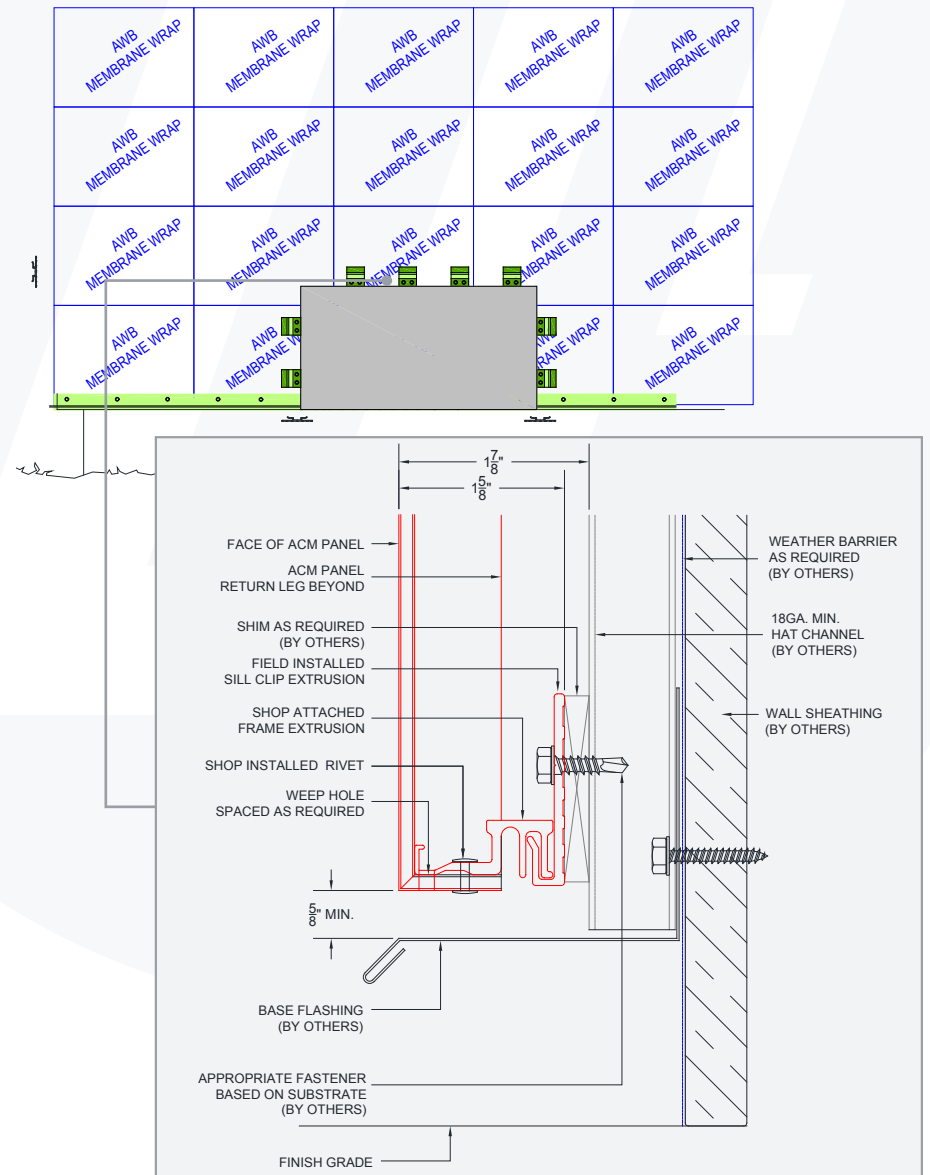
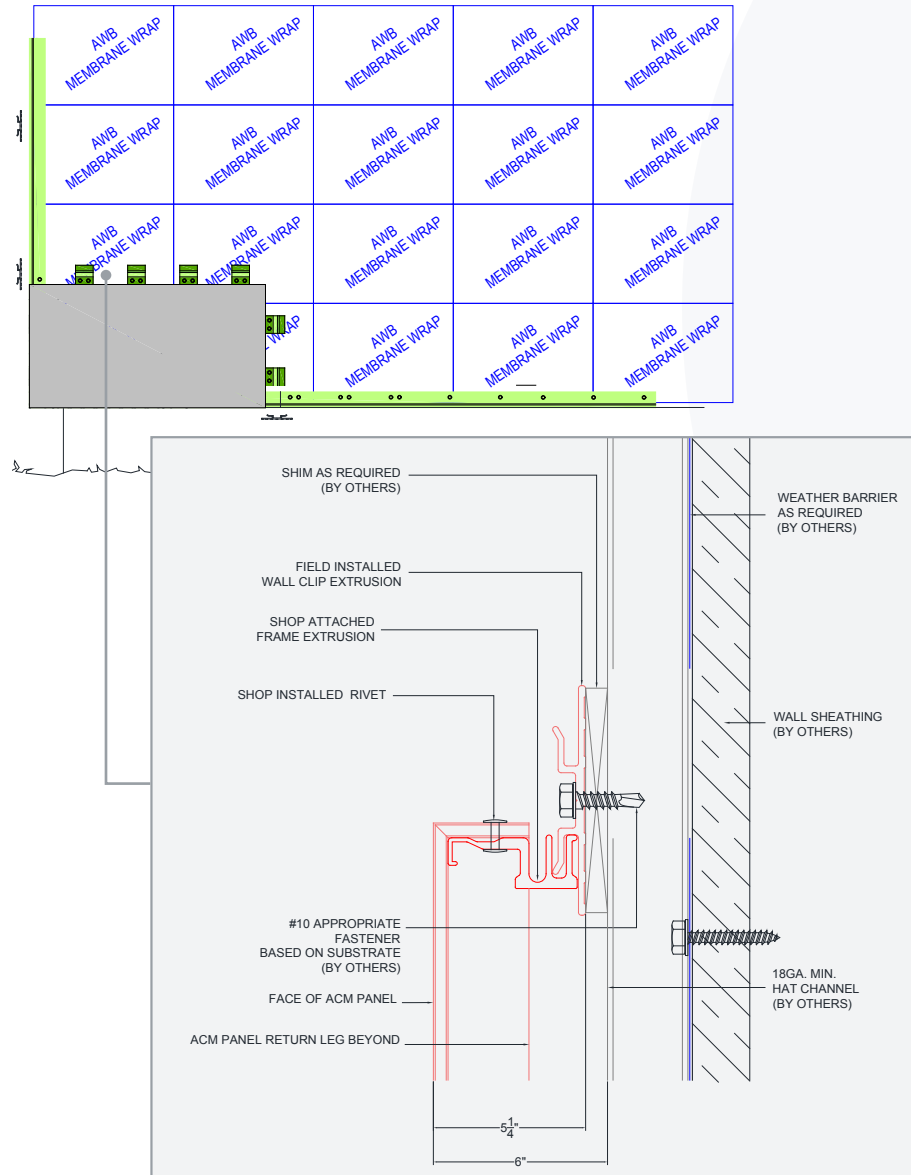
ATTACHING THE STARTER EXTRUSIONS

Because the system is installed progressively, installation typically begins at the lowest corner of the elevation. After the appropriate flashing is installed, place spacer blocks (1/2" joint typical) on the flashing to establish alignment for the first panel. Peel the protective film back from the returned edges of the panel, then install the sill or modified clip extrusion along the bottom and left side (for left-to-right installations), shimming as required to achieve proper alignment.



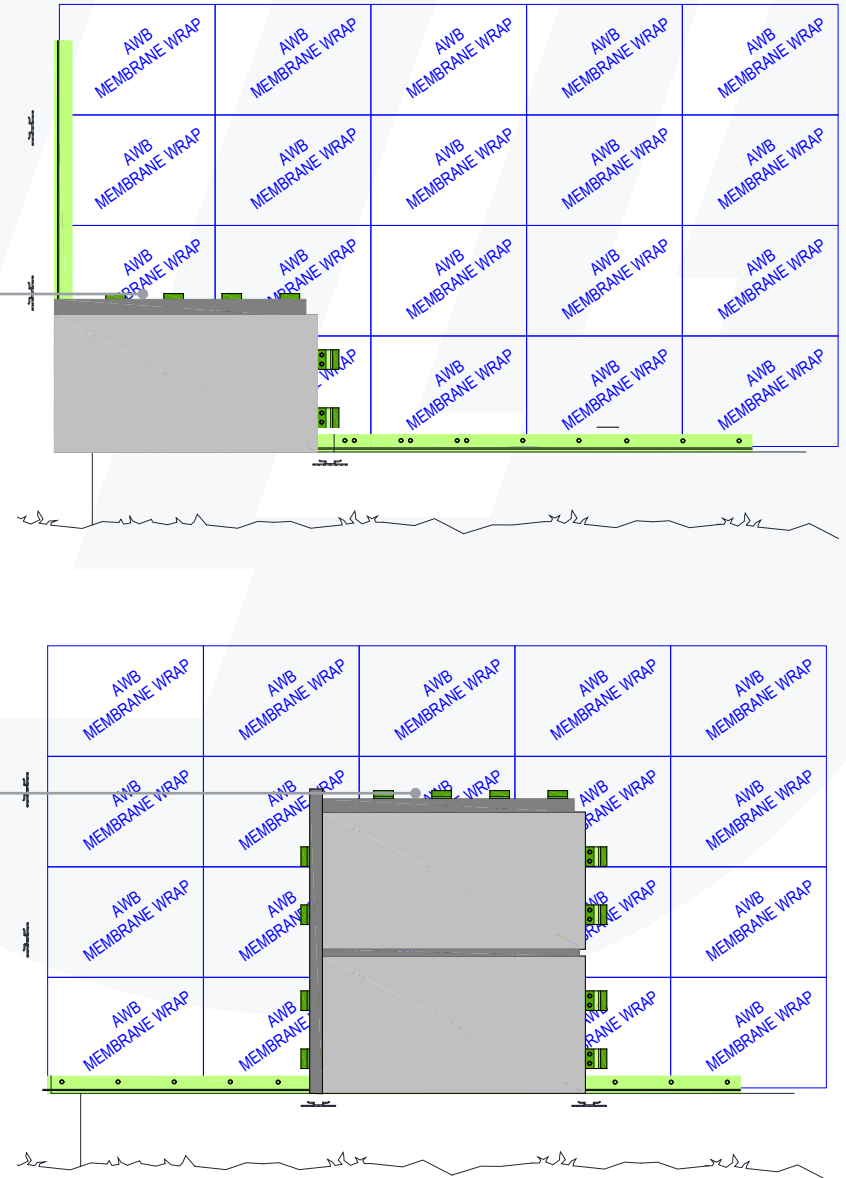
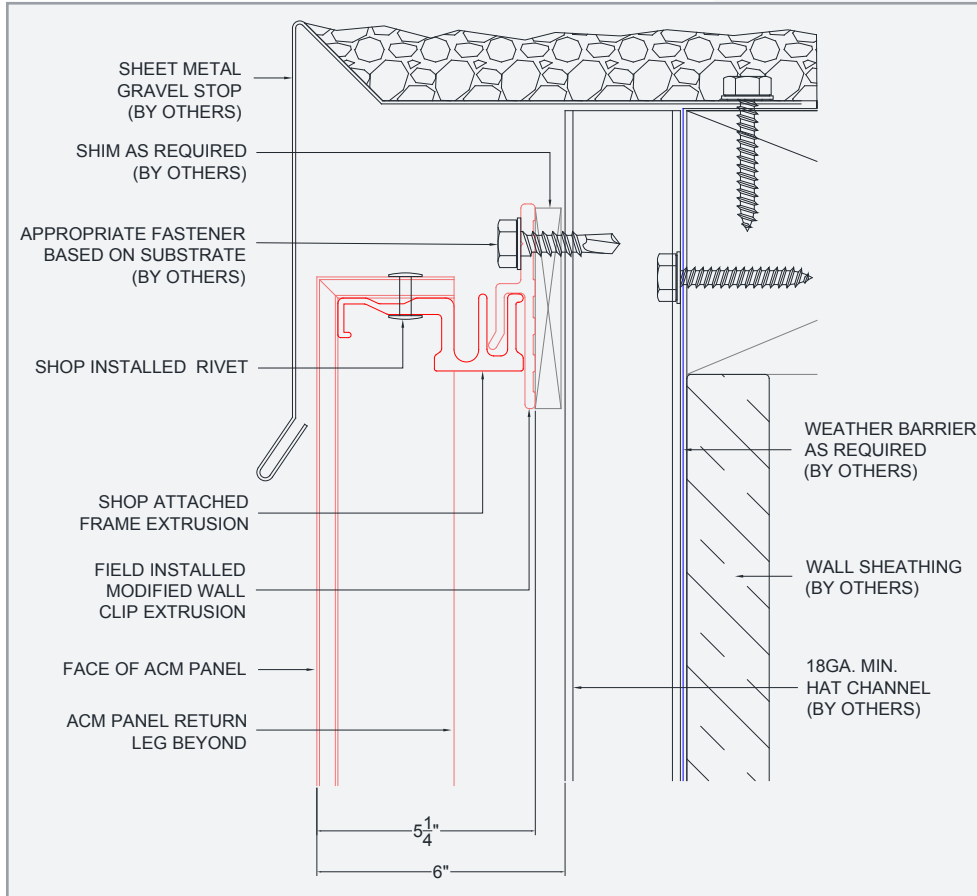
INSTALLING THE FIRST PANEL

Slide the edges of the panel onto the starter extrusion, inserting the lower edge first to fully engage the horizontal extrusion. For directional installations, shift the panel left or right as needed to engage the vertical extrusion. Insert the 4" wall clips into the top and side frame extrusions, seating them lightly and maintaining a 1/16" gap to allow for thermal movement. Secure the clips to the substrate using two #10 × 1½" self-tapping or TEK screws. Remove the protective film completely once the panel is installed.



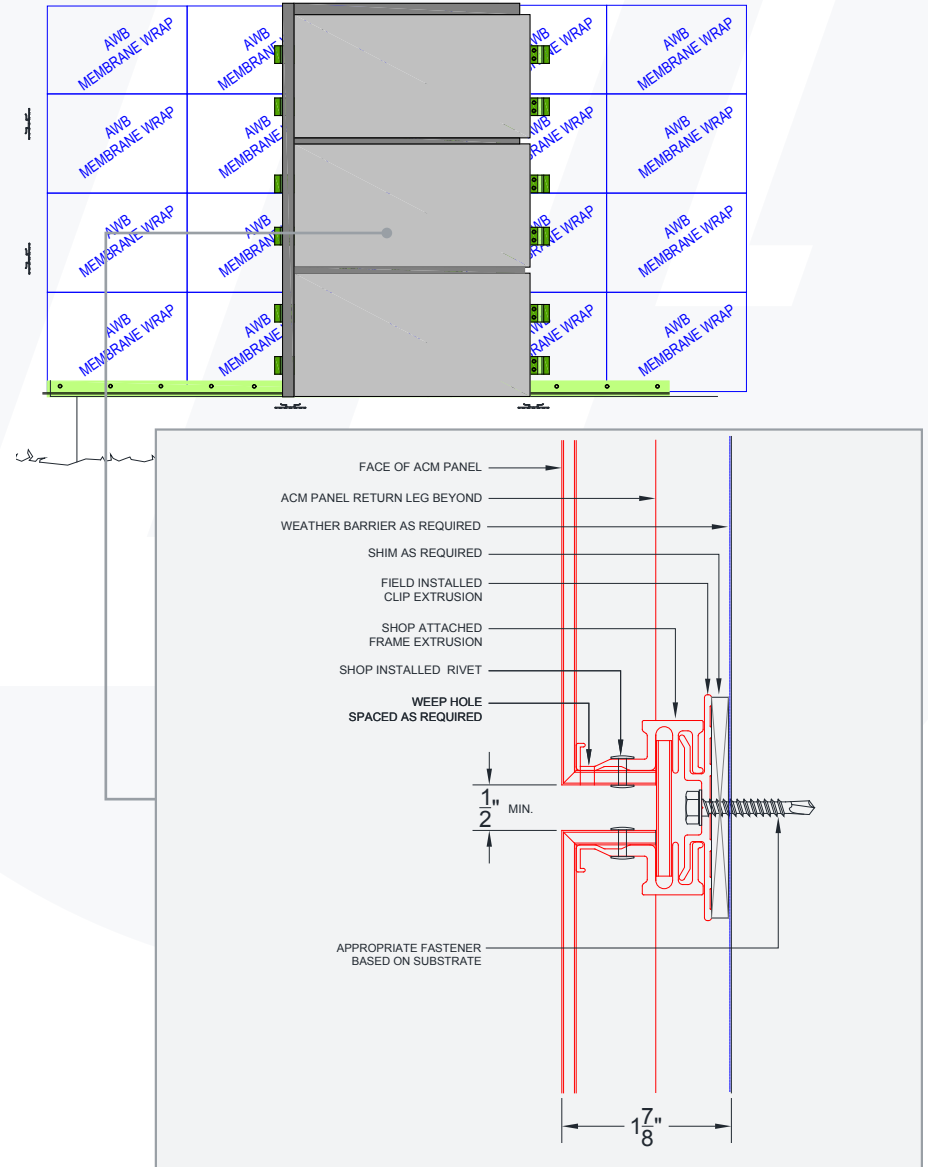
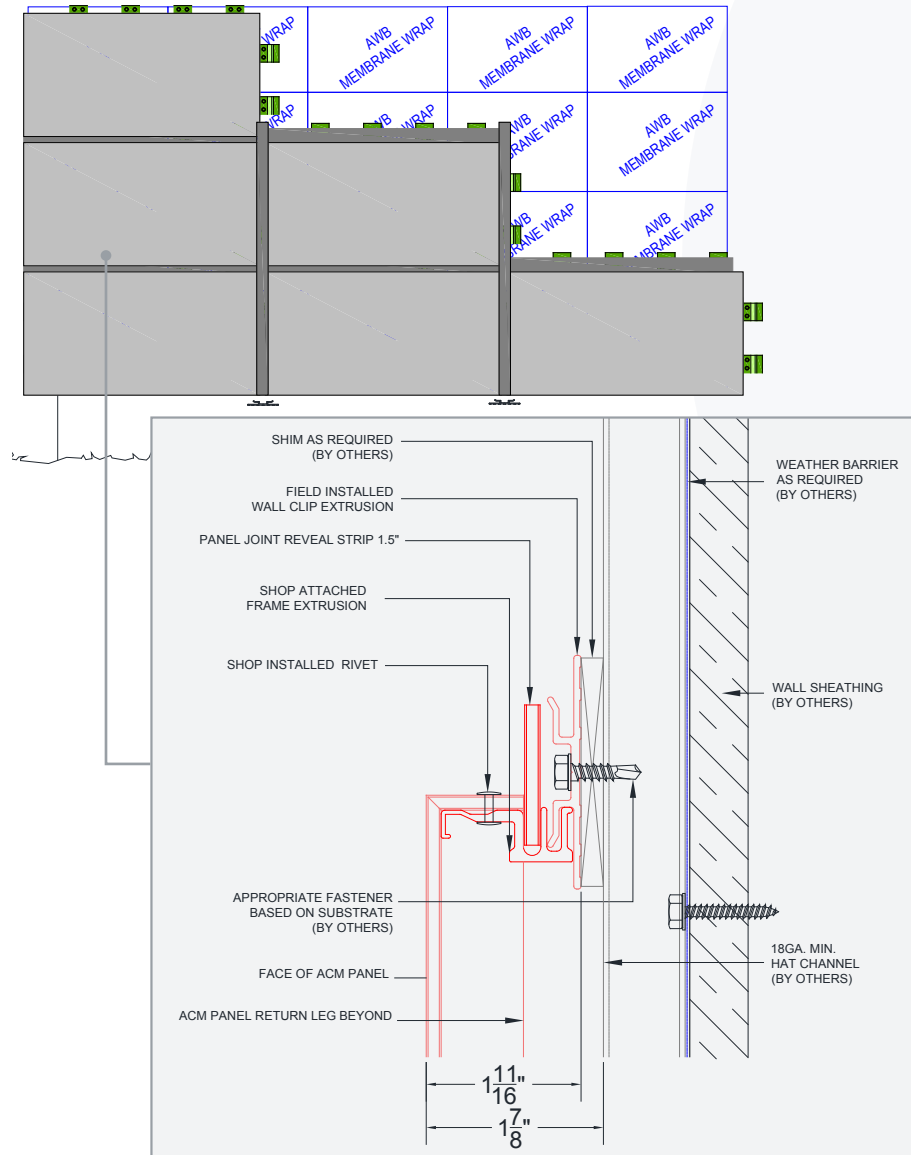
INSERT THE REVEAL COLOR STRIPS

At each joint, install the reveal color strip into the frame extrusions before installing the next panel in sequence. Vertical strips should pass through horizontal strips to maintain a continuous appearance. Slide the color strips into the slot within the frame extrusion, allowing them to float freely without mechanical fastening. Remove the protective film completely from the color strips prior to installation.



INSERT THE ADJOINING PANELS

Place spacer blocks equal to the joint width along the panel edges to establish proper spacing. Prepare the panel for installation, then slide it over the edge of the reveal strip and into the frame extrusion. Insert the wall clips at the top and sides of the panel and fasten them to the substrate. Remove the protective film completely from the installed panel(s). Continue installation by working vertically and horizontally across the grid; it is recommended to complete the first column vertically before moving horizontally to the next column. Complete the installation by trimming with flashings and installing backer rod and sealant at end-wall and termination conditions as required.



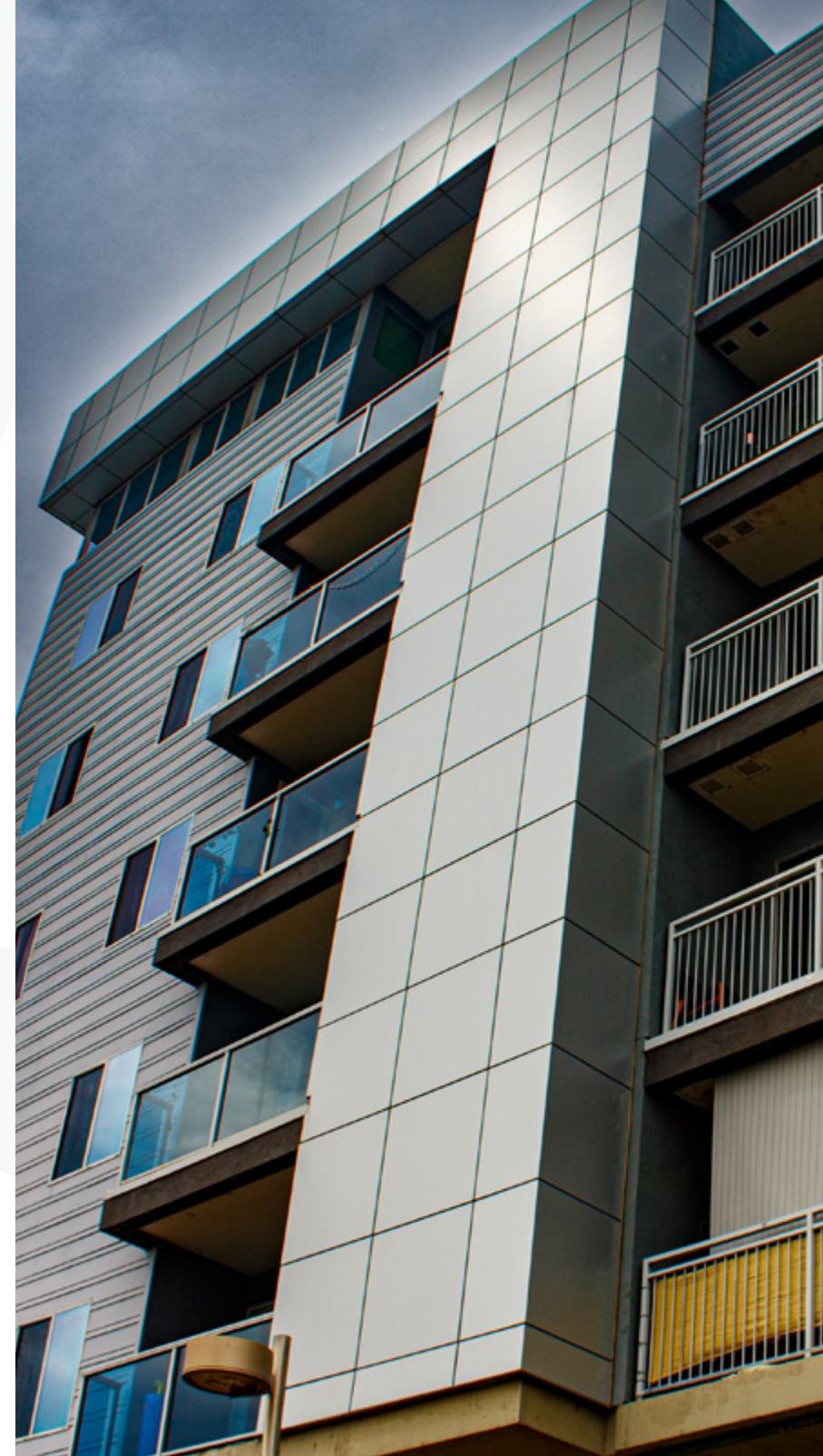
MAINTENANCE & CARE

Panels should be incorporated into the building's regular cleaning and maintenance program and cleaned in accordance with AAMA 610.1, Voluntary Guide Specification for Cleaning and Maintenance of Painted Aluminum Extrusions and Curtain Wall Panels. In general, panels may be cleaned using warm water and a mild detergent as needed. For more persistent contaminants, light brushing or gentle scrubbing may be required. Abrasive cleaners, harsh chemicals, or aggressive solvents must not be used, as they may damage the finish.

TOUCH-UP & REPAIR

Minor scratches or surface damage incurred during installation may be addressed using touch-up paint supplied by the fabricator. Touch-up paint is intended for small, localized repairs only and should not be used to refinish large areas. Repainted surfaces may differ in appearance from the factory-applied finish, and use of touch-up paint beyond minor repairs may void the finish warranty in the affected areas.

Lumabuilt makes no warranties, express or implied, including any warranty of merchantability or fitness for a particular purpose, with respect to the information, recommendations, or product data provided. Lumabuilt shall not be liable for any direct, indirect, incidental, special, or consequential damages arising from the use of such information, whether based on contract, negligence, strict liability, or any other legal theory, and regardless of whether such damages arise from a breach of warranty, express or implied.



**We are more than a manufacturer,
we are your partner in design,
every step of the way.**



2529 West Jackson Street
Phoenix, AZ 85009

602.275.1676

info@lumabuilt.com

For more information, visit lumabuilt.com