

INDEX

I - INDEX

IA - INDEX CONTINUED

0- ELEVATION

0A- PANEL ISO

1- COMPONENTS

2- TYP. HORIZONTAL REVEAL DETAIL

3- TYP. VERTICAL REVEAL DETAIL

4- TYP. ALTERNATE REVEAL DETAIL

5- STIFFENER DETAIL

6- INSIDE CORNER DETAIL

7- OUTSIDE CORNER DETAIL

8- PANEL END DETAIL

9- PANEL END DETAIL WITH REVEAL

10- BASE DETAIL 1 WITH REVEAL

11- BASE DETAIL 2 WITH REVEAL

12- BASE DETAIL 1 WITH SEALANT

13- BASE DETAIL 2 WITH SEALANT

14- BASE DETAIL 1 NO REVEAL

15- BASE DETAIL 2 NO REVEAL

16- WINDOW HEADER DETAIL WITH REVEAL

17- WINDOW SILL DETAIL WITH REVEAL

18- WINDOW JAMB DETAIL WITH REVEAL

INDEX

- 19- WINDOW HEADER DETAIL W/ SEALANT**
- 20- WINDOW SILL DETAIL W/ SEALANT**
- 21- WINDOW JAMB DETAIL W/ SEALANT**
- 22- WINDOW HEADER DETAIL NO REVEAL**
- 23- WINDOW JAMB DETAIL NO REVEAL**
- 24- SOFFIT & FASCIA DETAIL**
- 25- ACM COPING CAP DETAIL**
- 26- ACM @ COPING CAP DETAIL**
- 27- ACM AT GRAVEL STOP DETAIL**
- 28- SQUARE COLUMN COVER DETAIL**
- 29- STRUCTURAL PENETRATION DETAIL**
- 30- LIGHT STRIP DETAIL**
- 31- EXPANSION JOINT DETAIL**
- 32- PENETRATION DETAIL**



Lumabuilt

Lumaplate

2529 W. Jackson St.
Phoenix, AZ 85298

PHONE: (602) 275-1676
FAX: (602) 275-1739

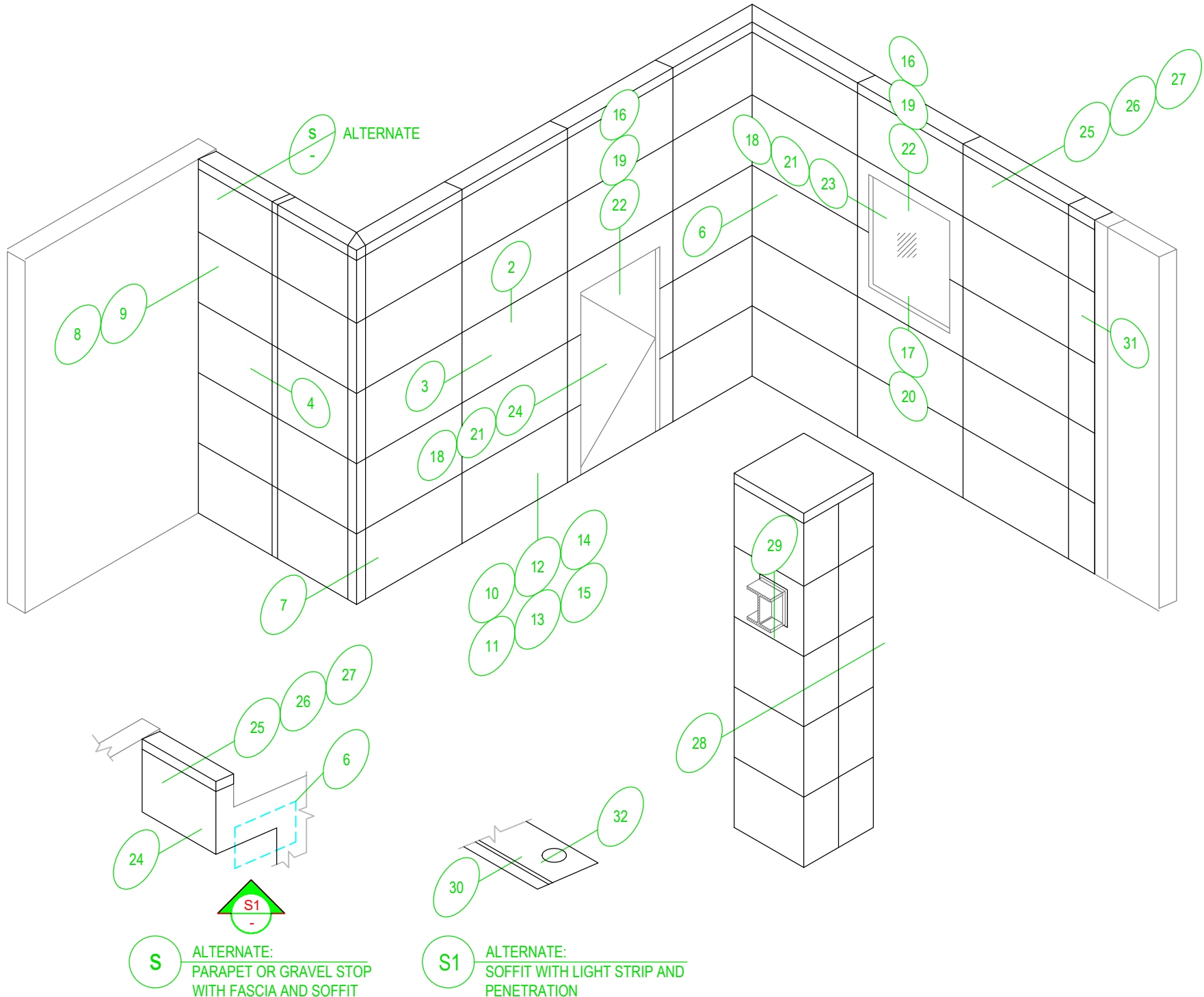
AP400 DETAIL INDEX

SCALE: NTS

1/26/24

SYSTEM = ALUMINUM AP400

IA



S ALTERNATE:
PARAPET OR GRAVEL STOP
WITH FASCIA AND SOFFIT

S1 ALTERNATE:
SOFFIT WITH LIGHT STRIP AND
PENETRATION

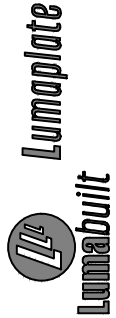
AP400 ACM DETAIL ELEVATION

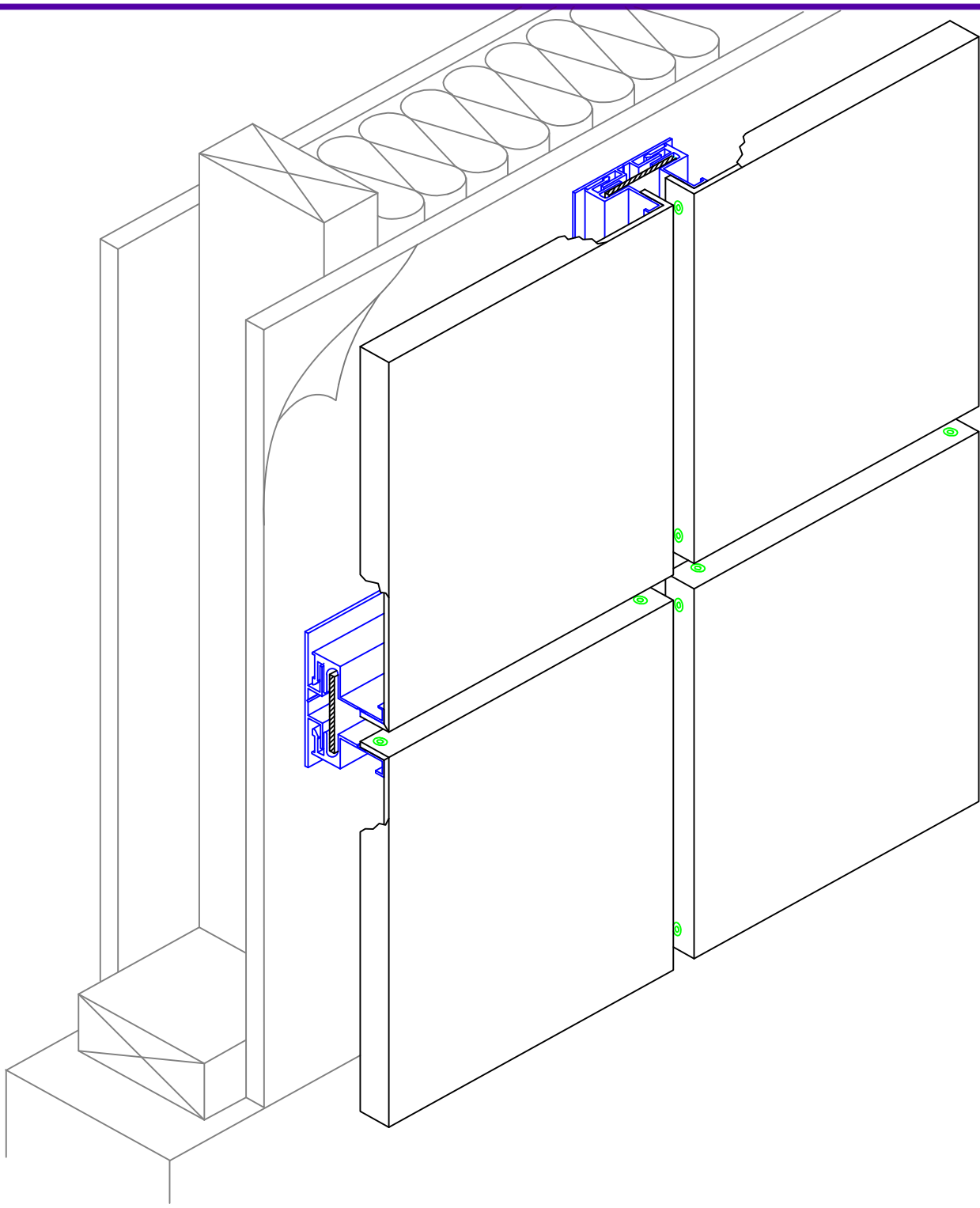
SYSTEM = ALUMINUM AP400

1/26/24

SCALE: NTS

2529 W. Jackson St.
Phoenix, AZ 85298
PHONE: (602) 275-1676
FAX: (602) 275-1739





Lumabuilt

Lumaplate

2529 W. Jackson St.
Phoenix, AZ 85298
PHONE: (602) 275-1676
FAX: (602) 275-1739

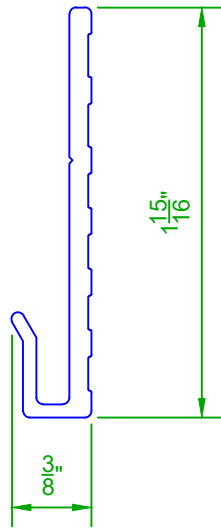
SCALE: NTS

1/26/24

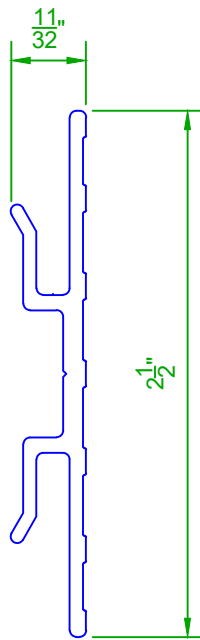
SYSTEM = ALUMINUM AP-400

AP400 PANEL ISOMETRIC SKETCH

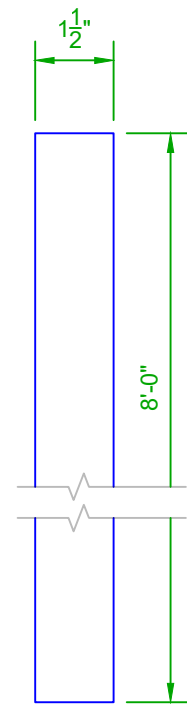
0A



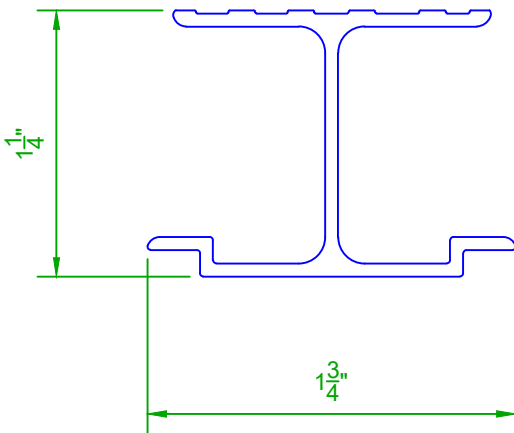
SILL CLIP EXTRUSION



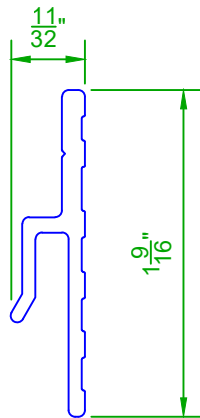
STD. WALL CLIP EXTRUSION



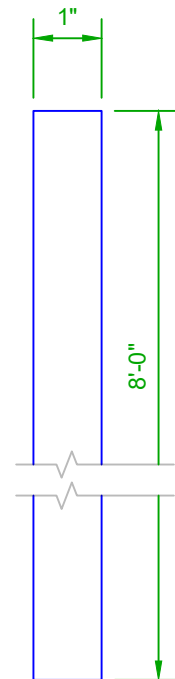
**.063" ALUMINUM REVEAL STRIP
(STD. PANEL JOINT)
(HORIZONTAL & VERTICAL)**



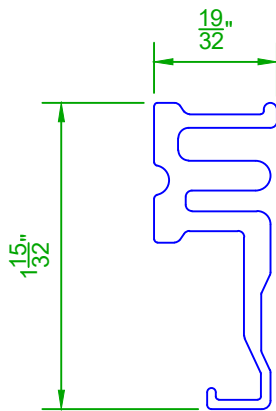
STIFFENER EXTRUSION



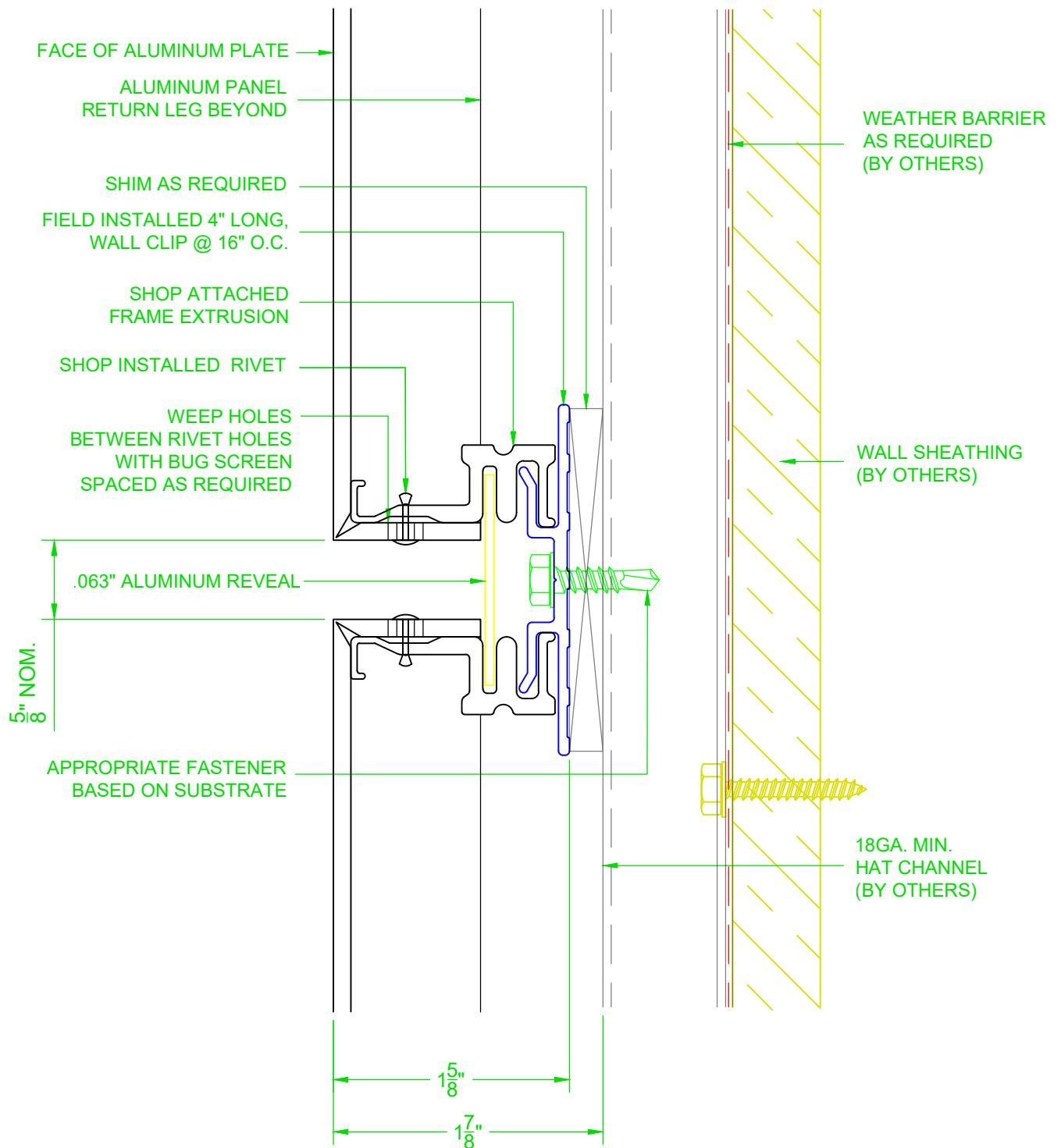
**MODIFIED WALL
CLIP EXTRUSION**

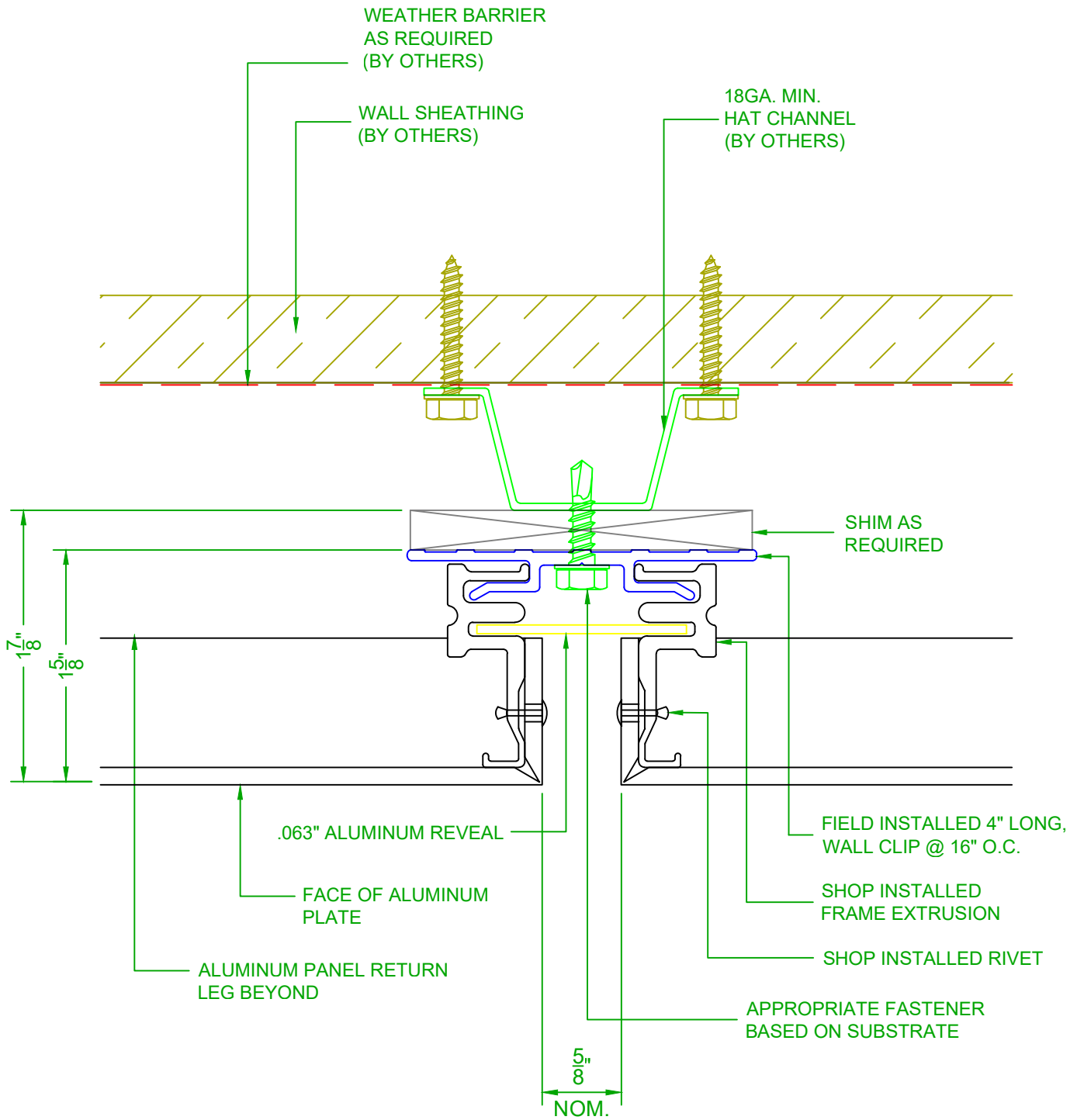


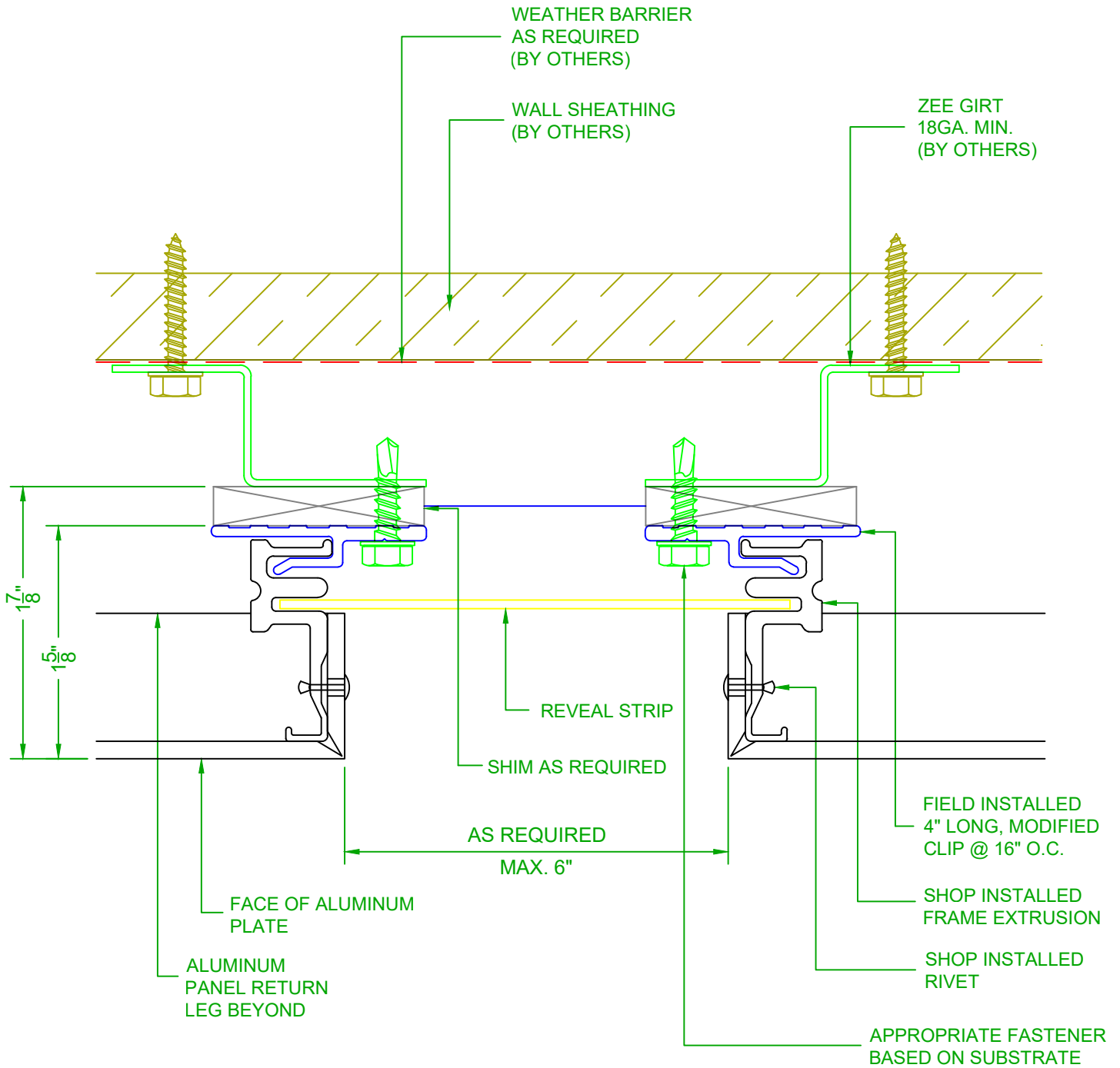
**.063" ALUMINUM REVEAL STRIP
(PANEL EDGE)**

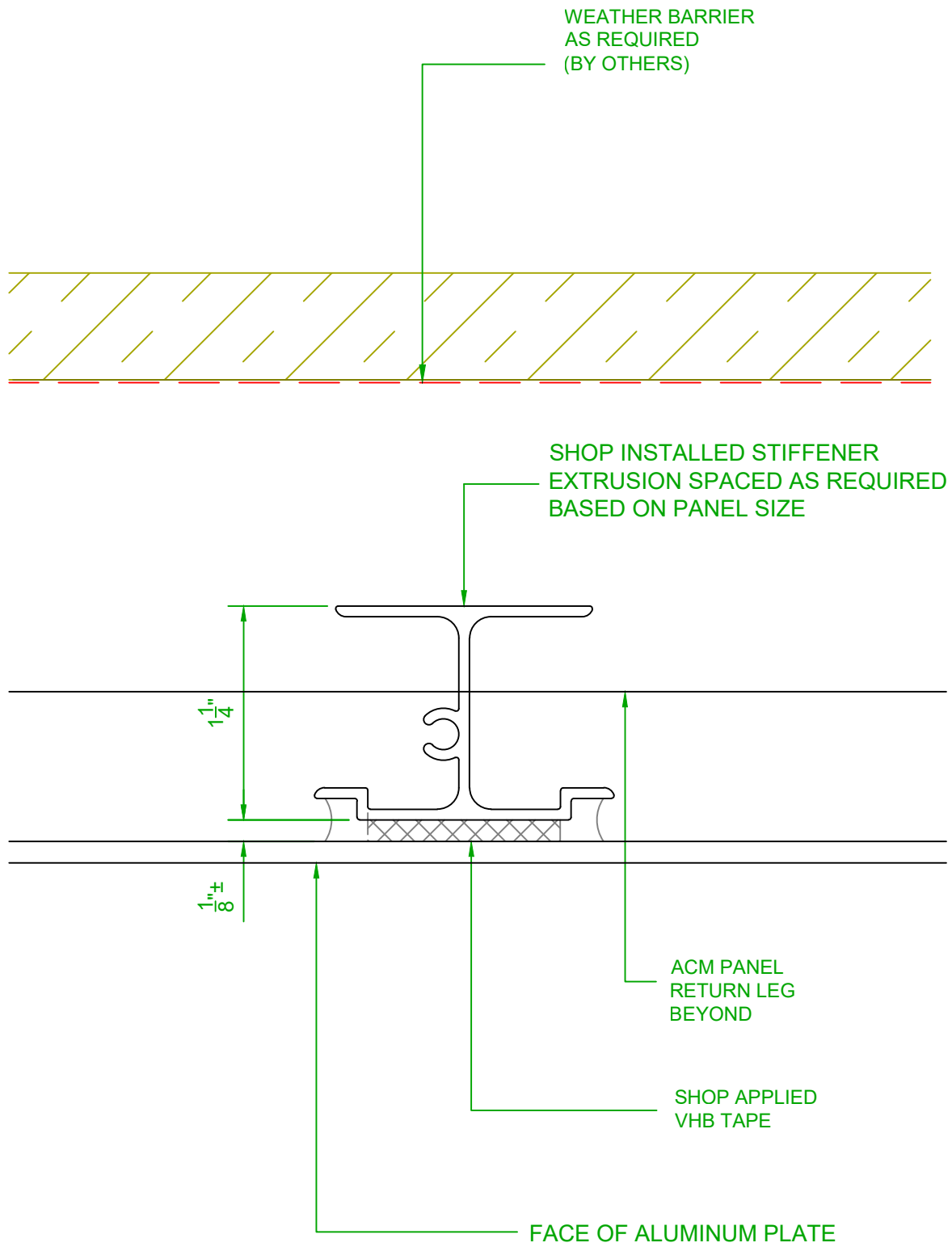


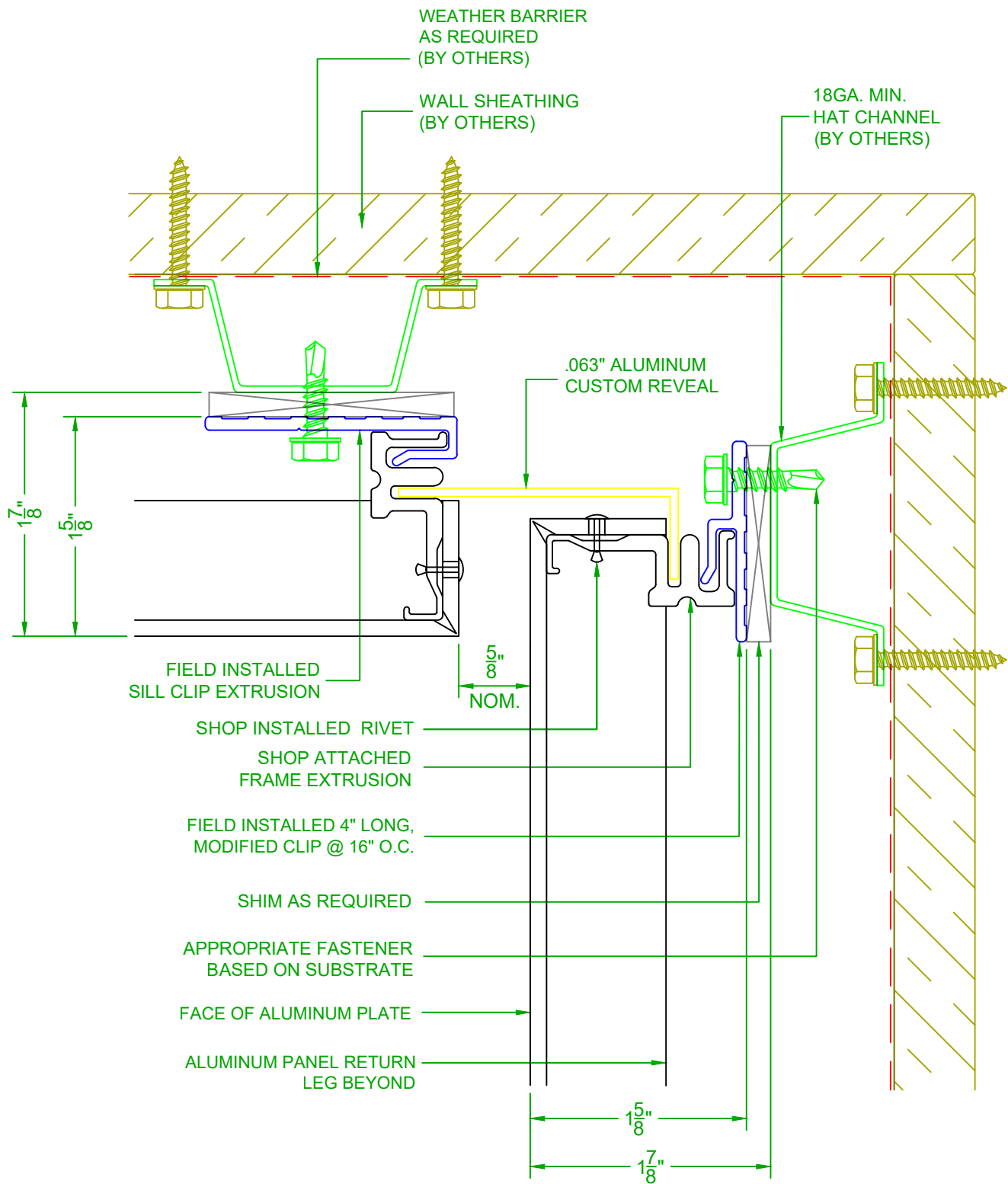
4MM FRAME EXTRUSION



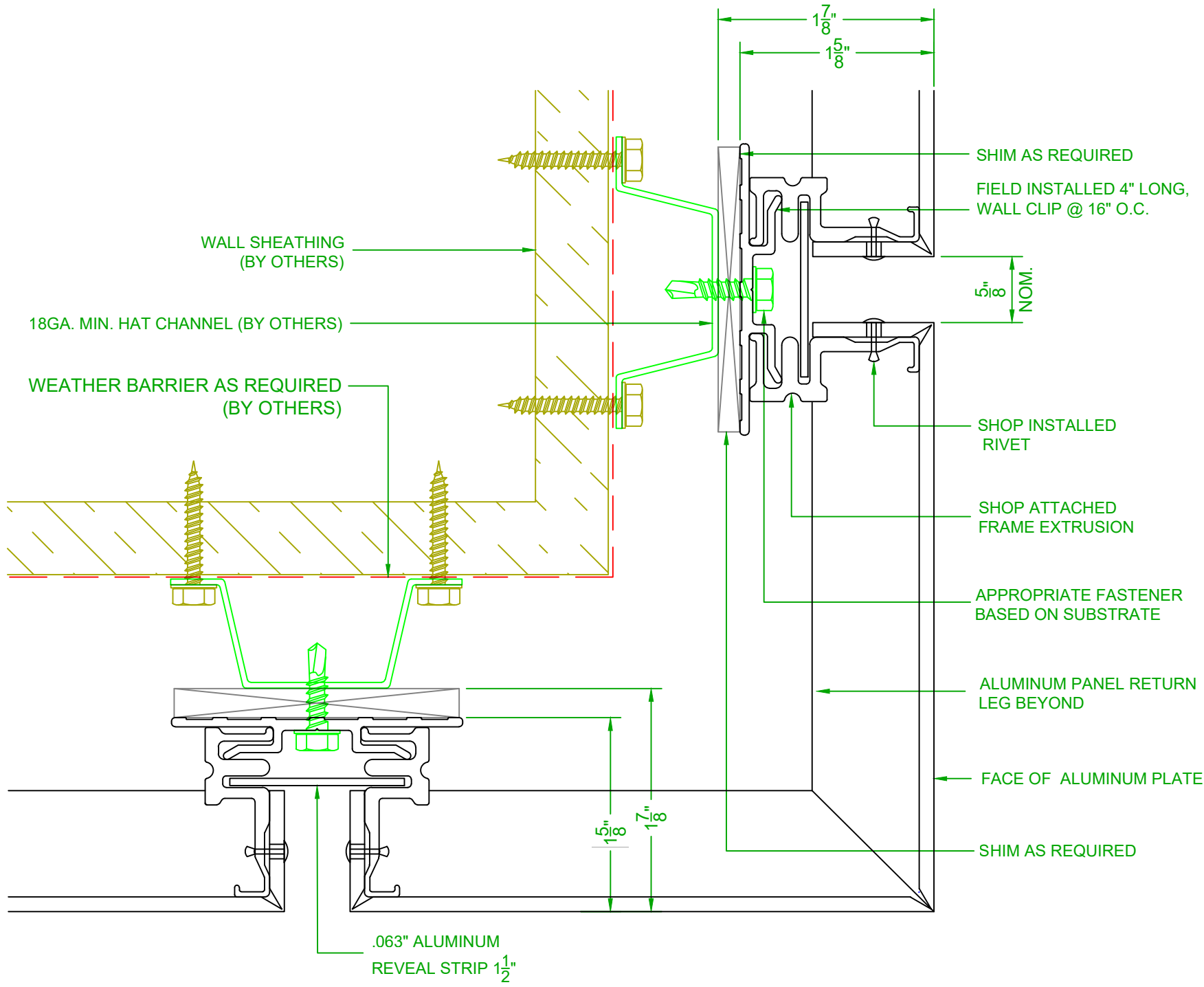






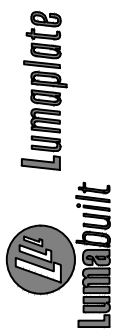


TYPICAL INSIDE CORNER DETAIL



TYP. OUTSIDE CORNER DETAIL

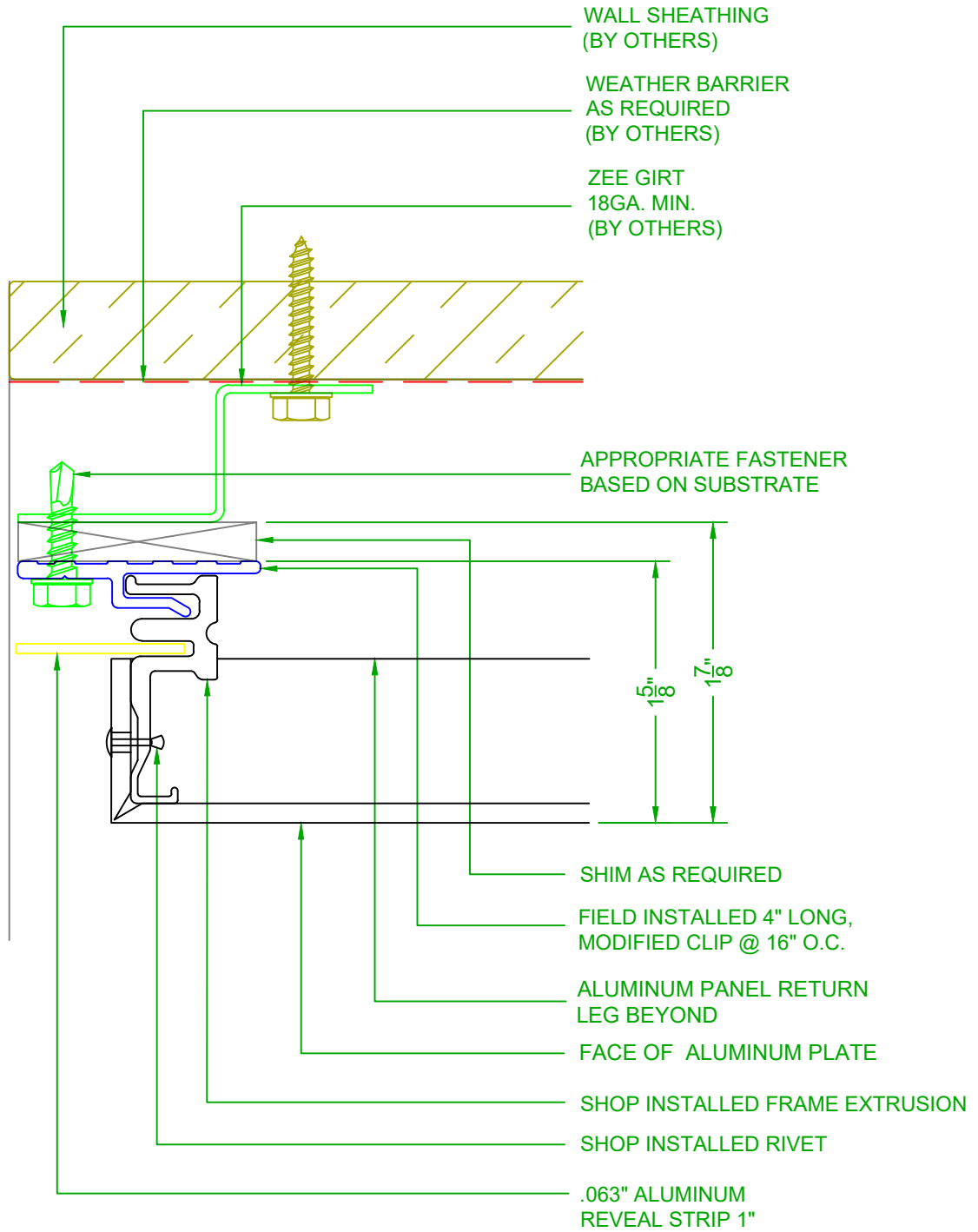
2529 W. Jackson St.
Phoenix, AZ 85298
PHONE: (602) 275-1676
FAX: (602) 275-1739

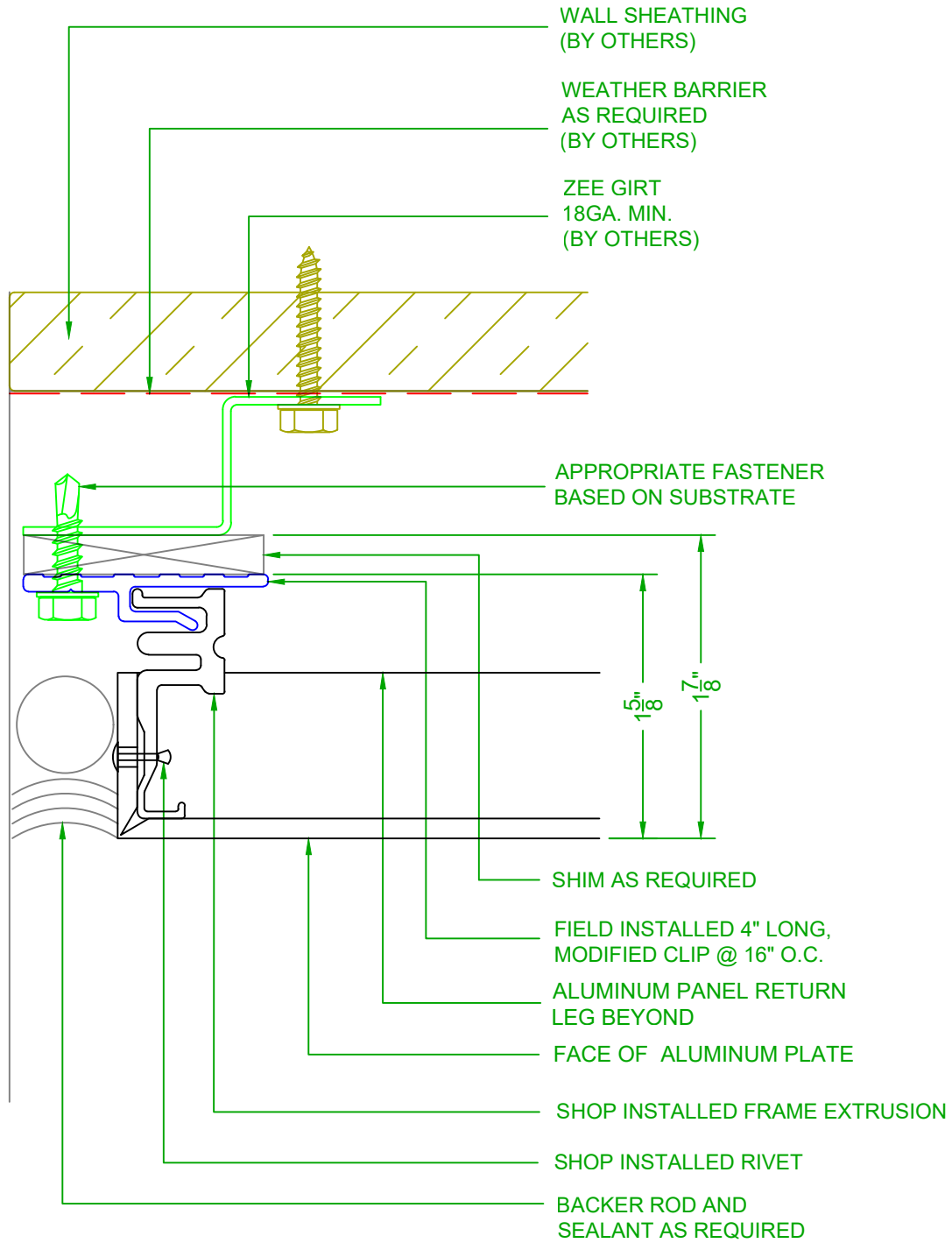


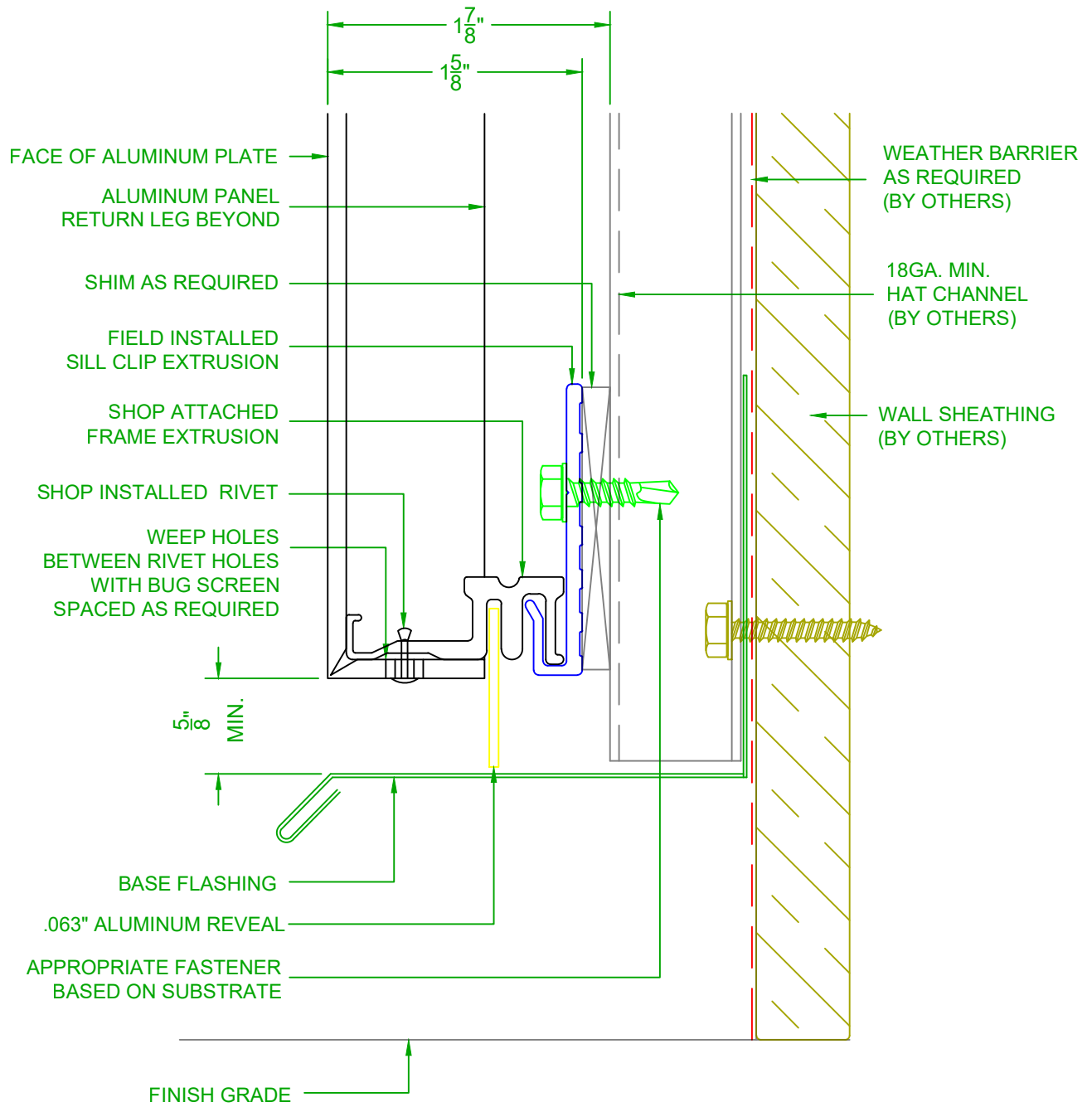
SYSTEM = ALUMINUM AP-400

1/26/24

SCALE: NTS







WEATHER BARRIER



Lumaplate

2529 W. Jackson St.
Phoenix, AZ 85298

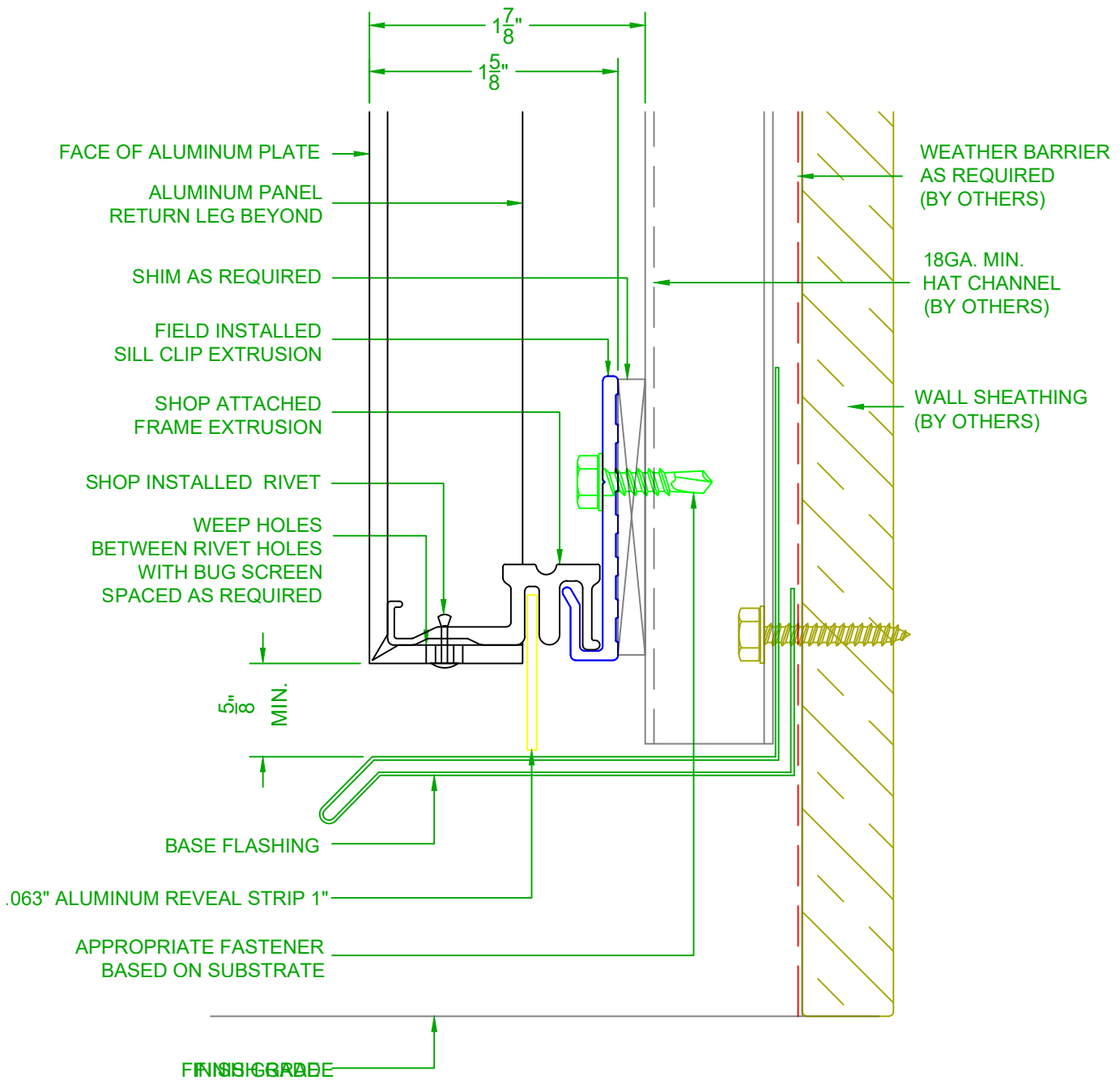
PHONE: (602) 275-1676
FAX: (602) 275-1739

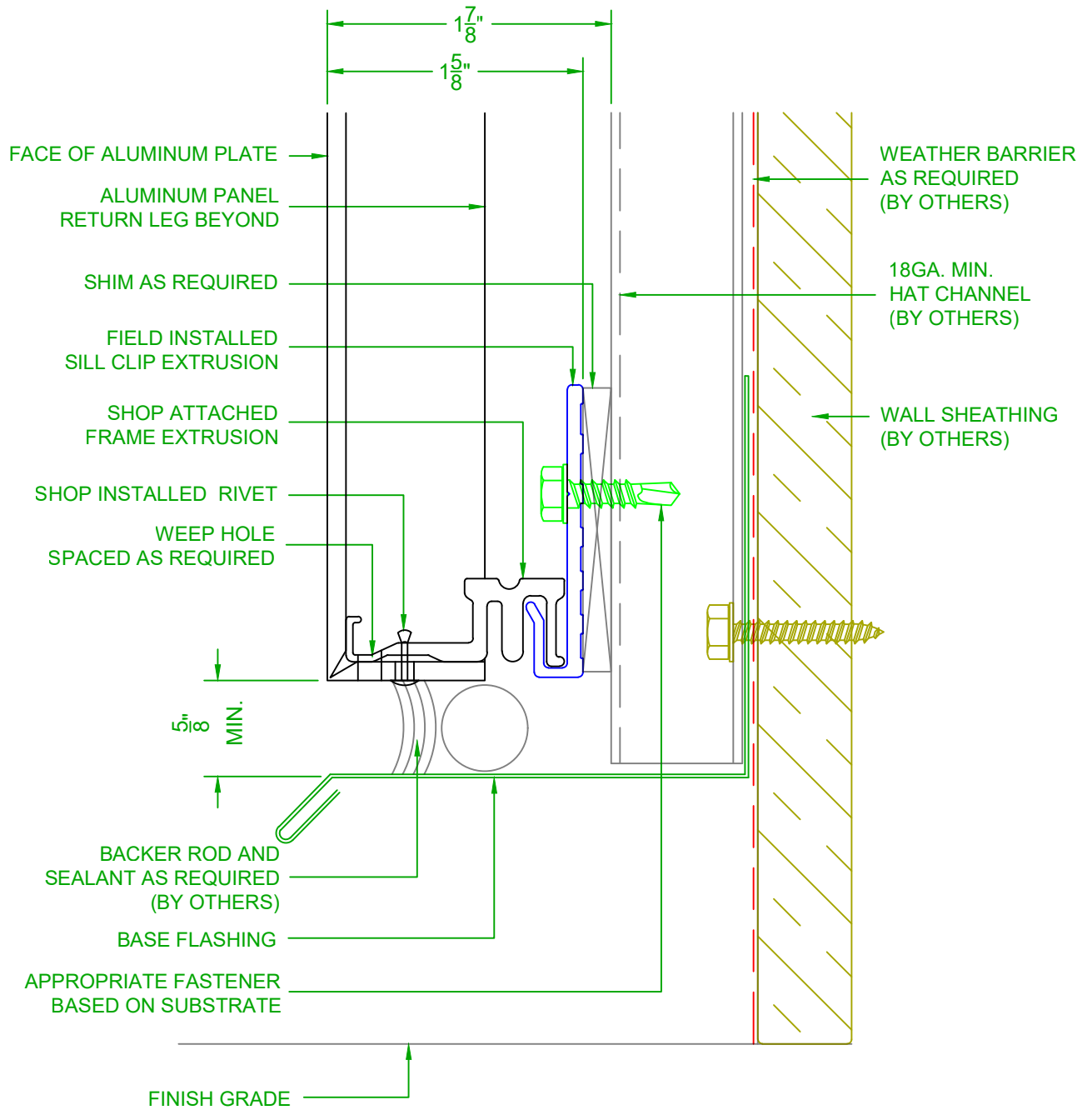
PANEL BASE DETAIL 1 (REVEAL)

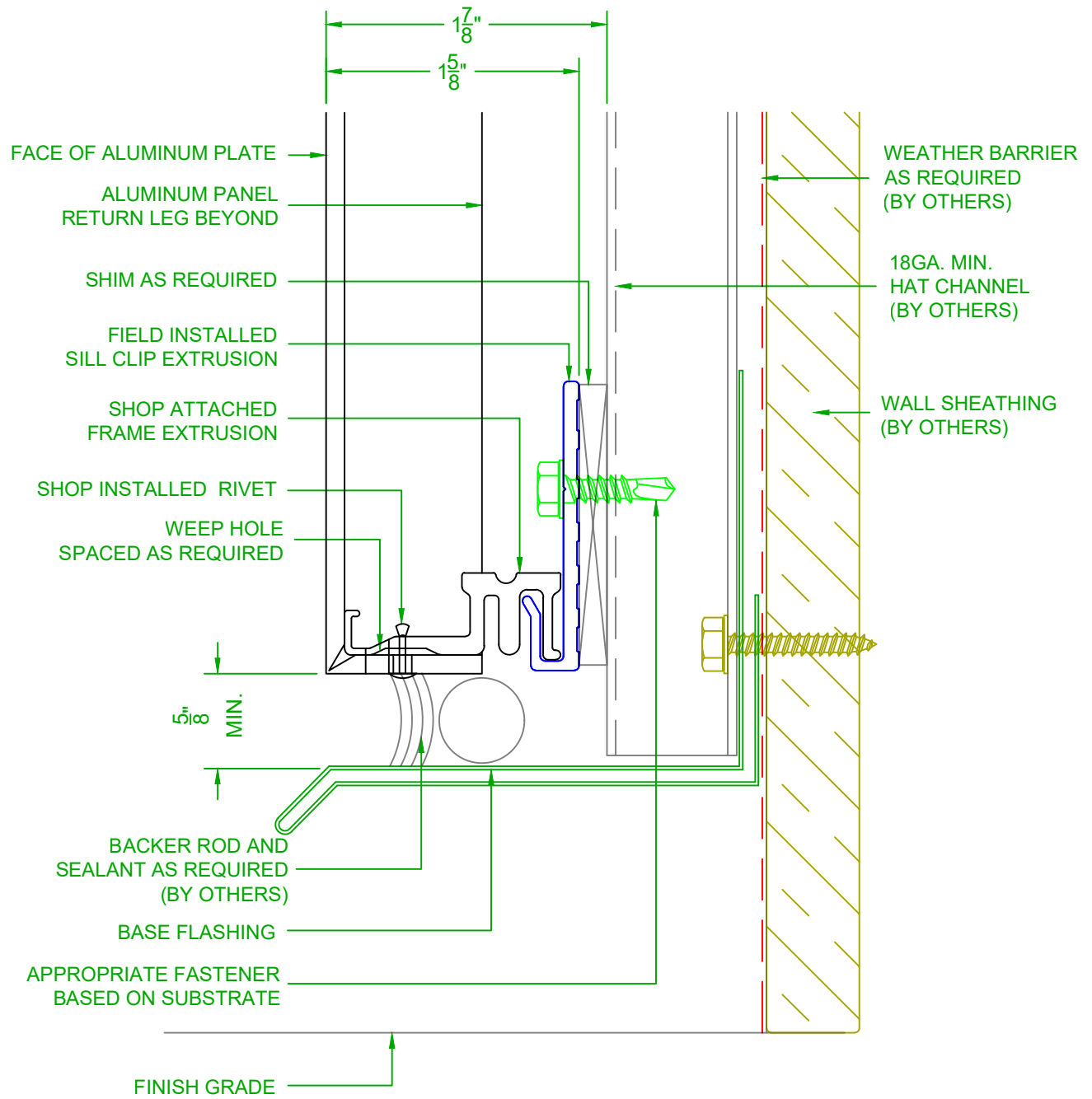
SCALE: NTS

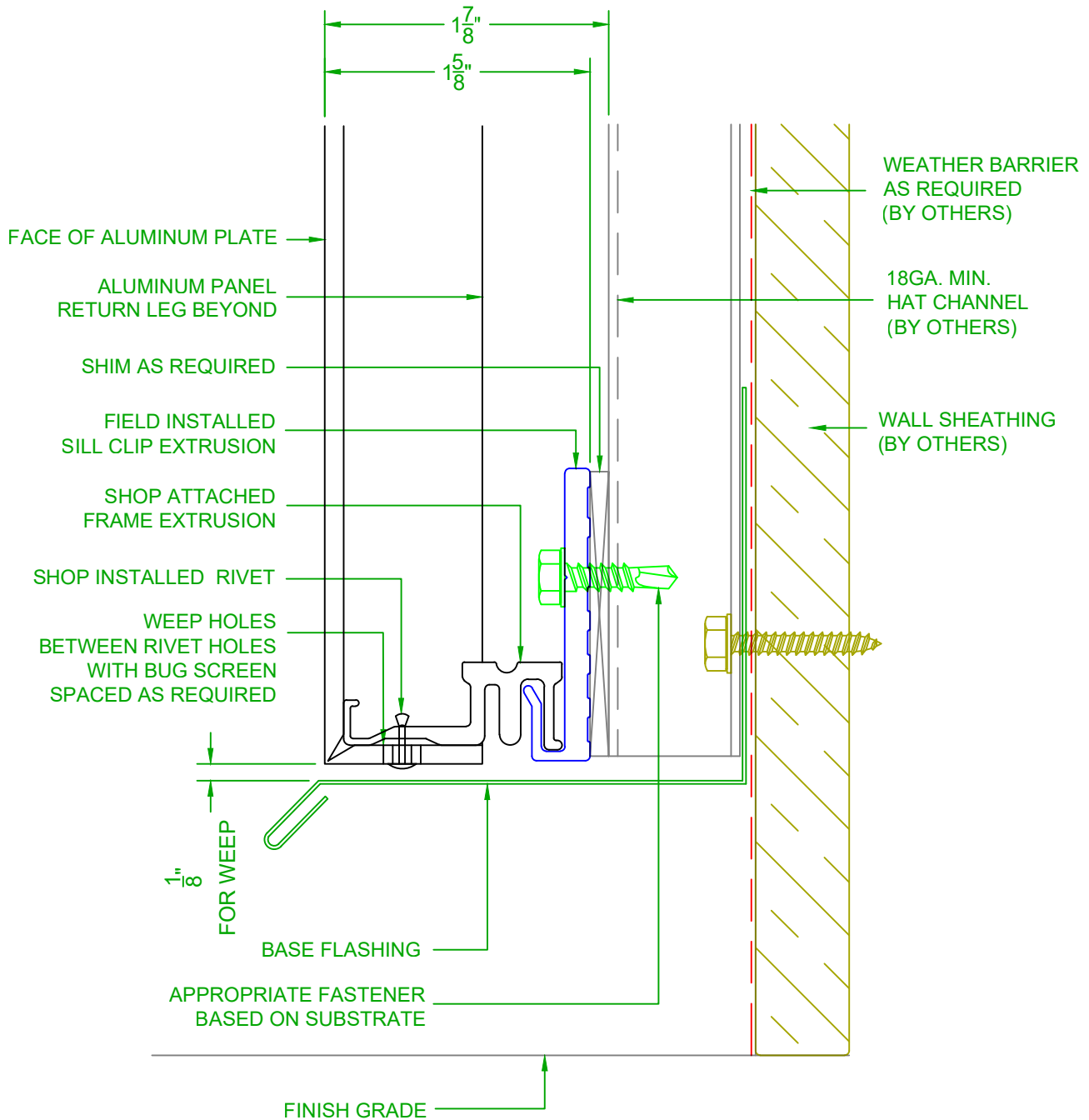
1/26/24

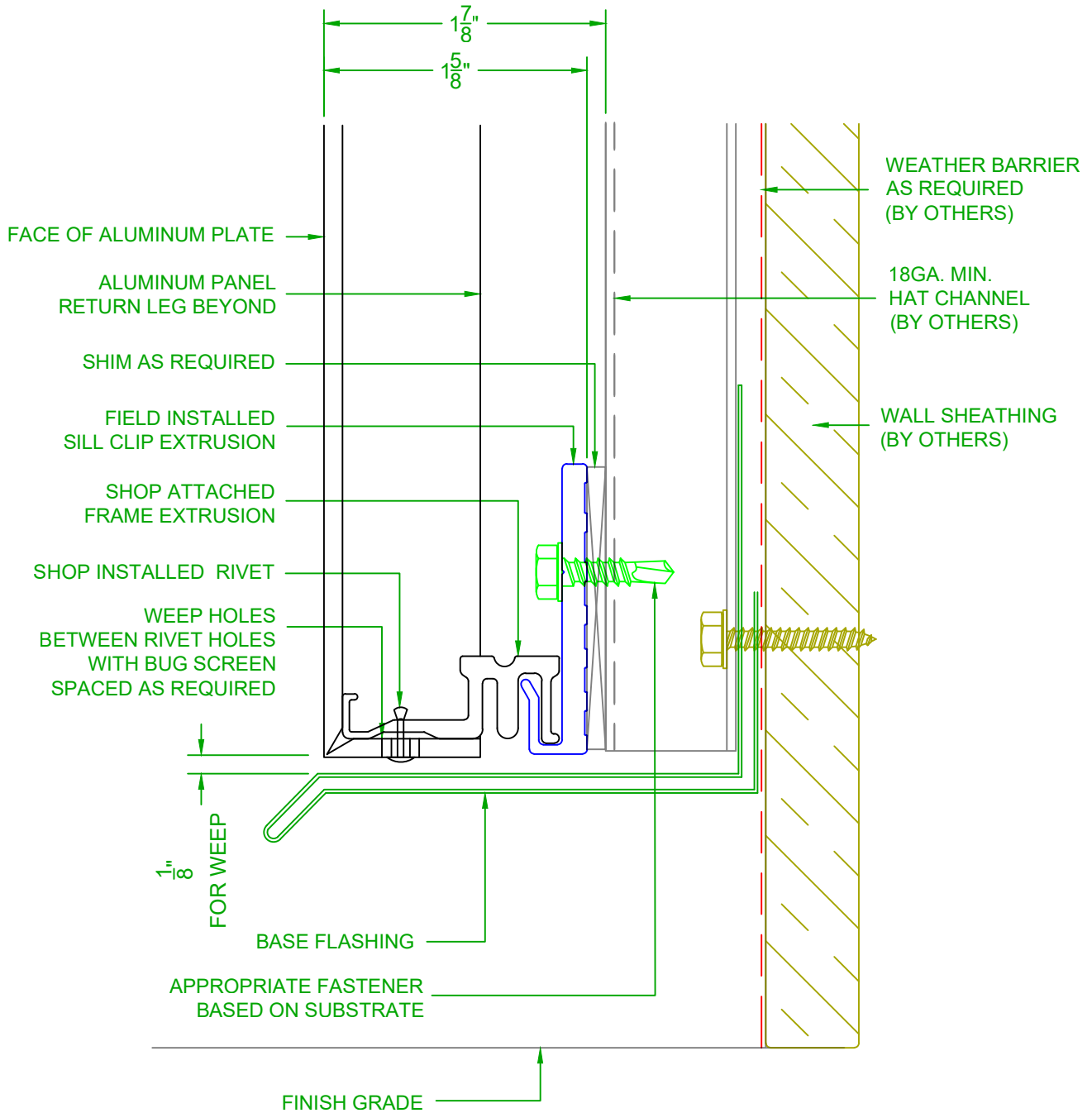
SYSTEM = ALUMINUM AP400

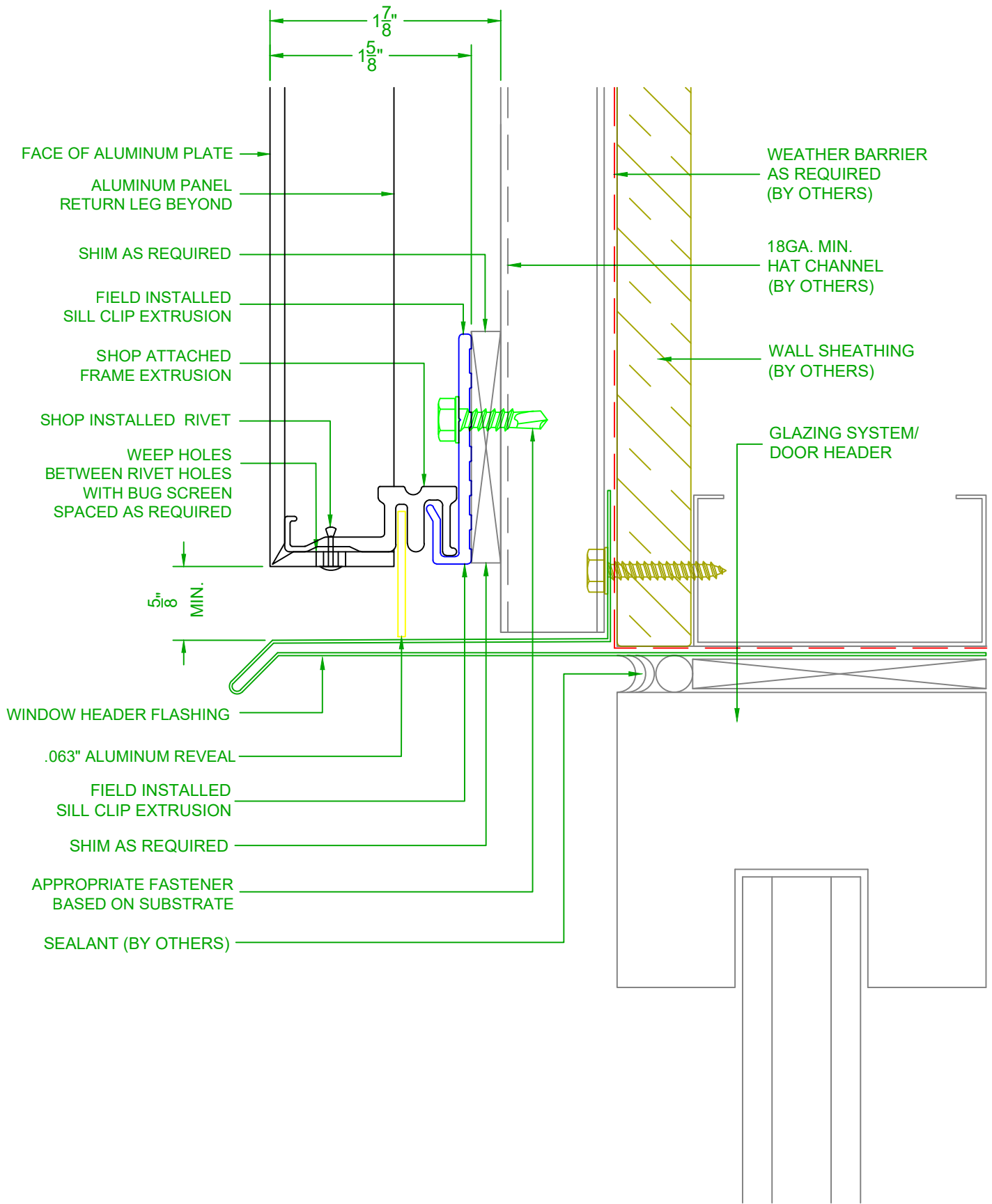


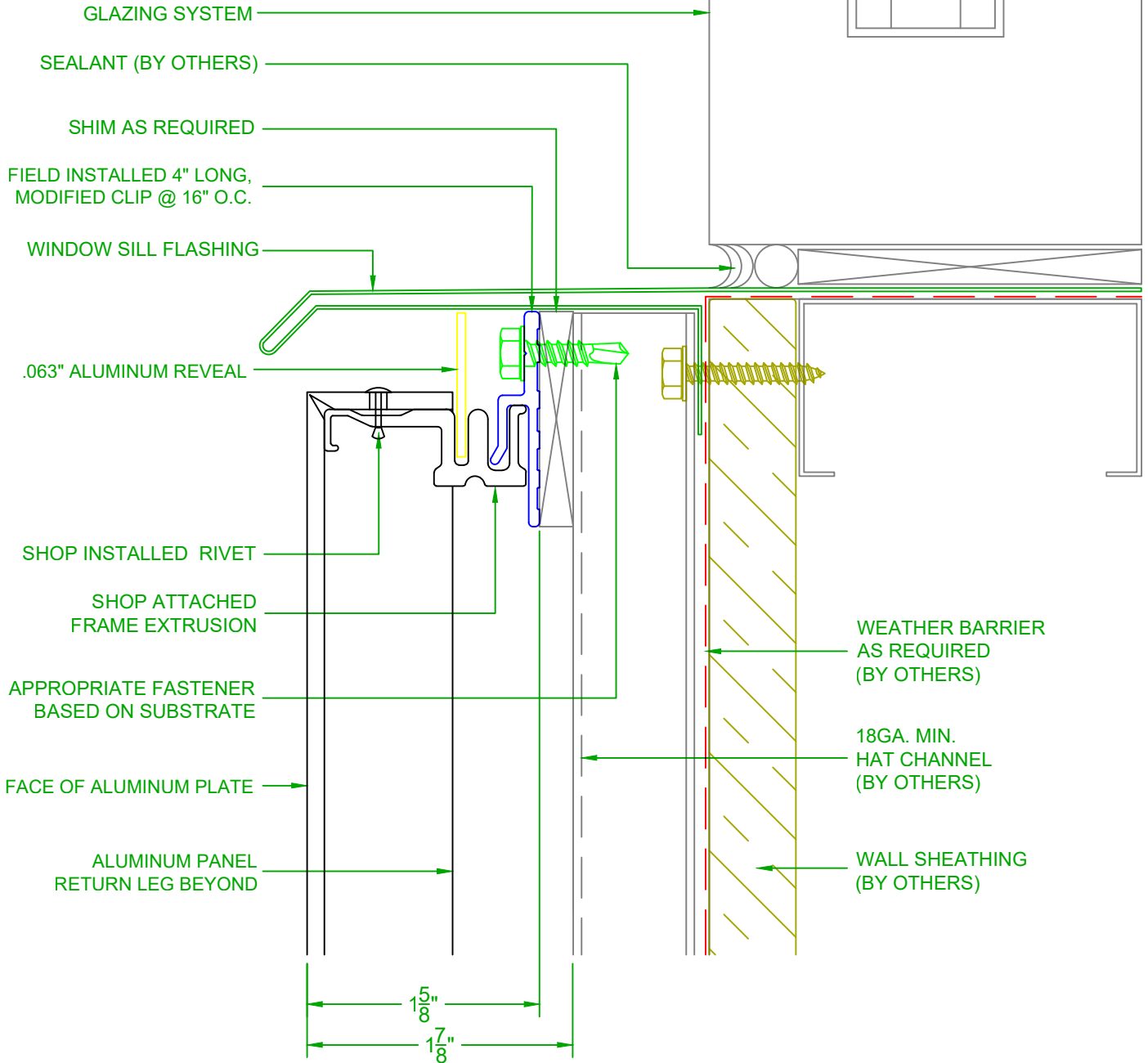


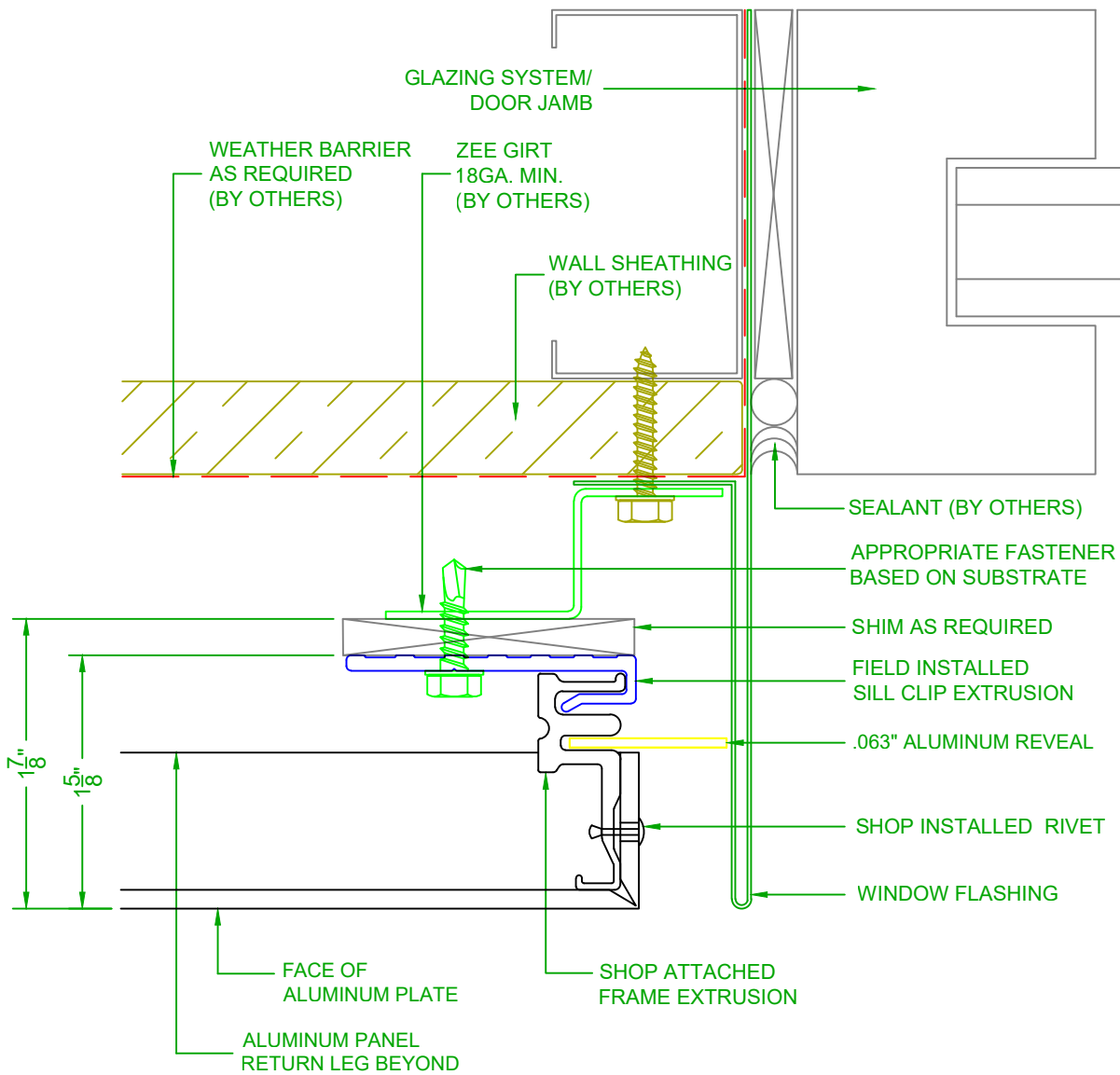


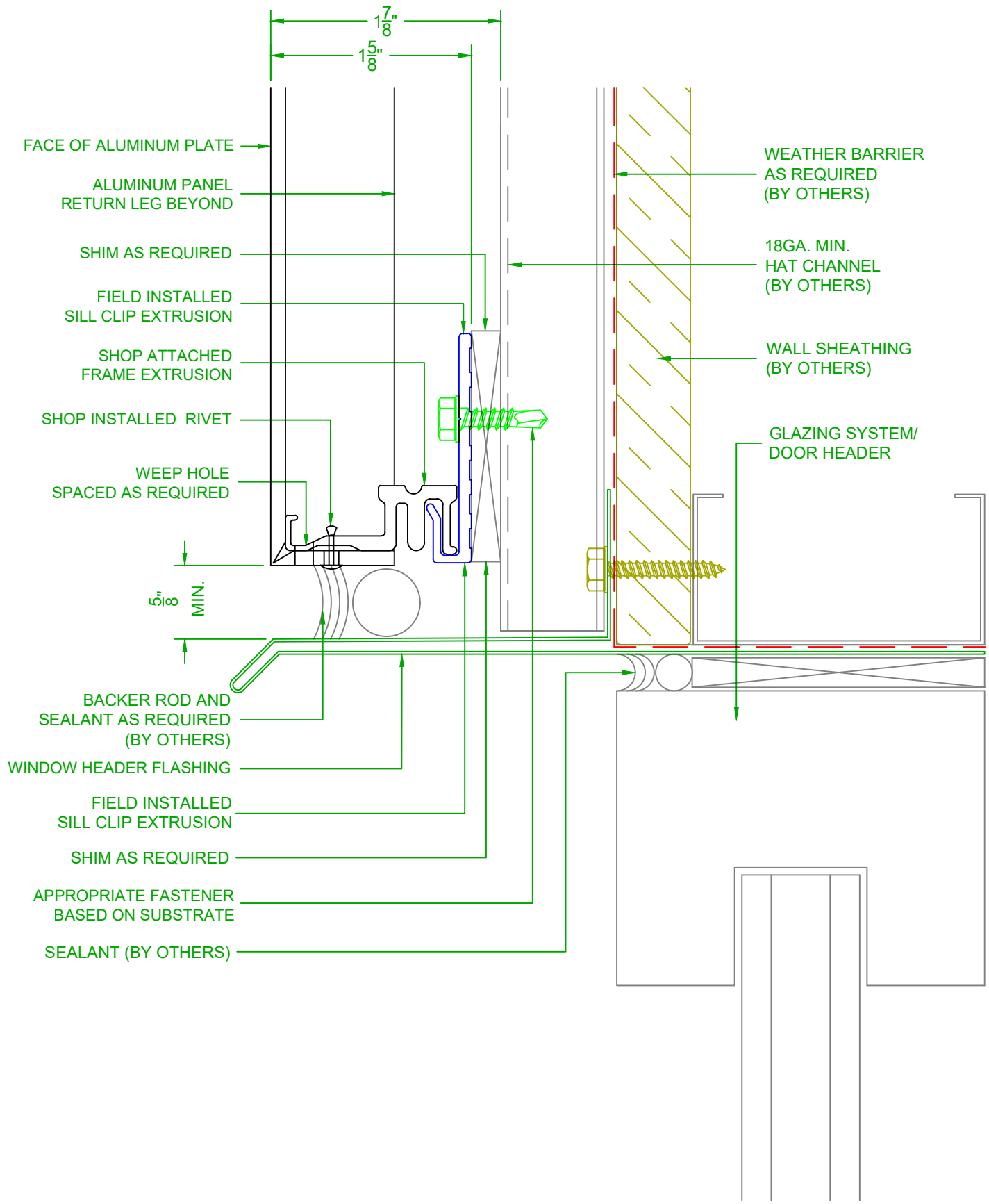


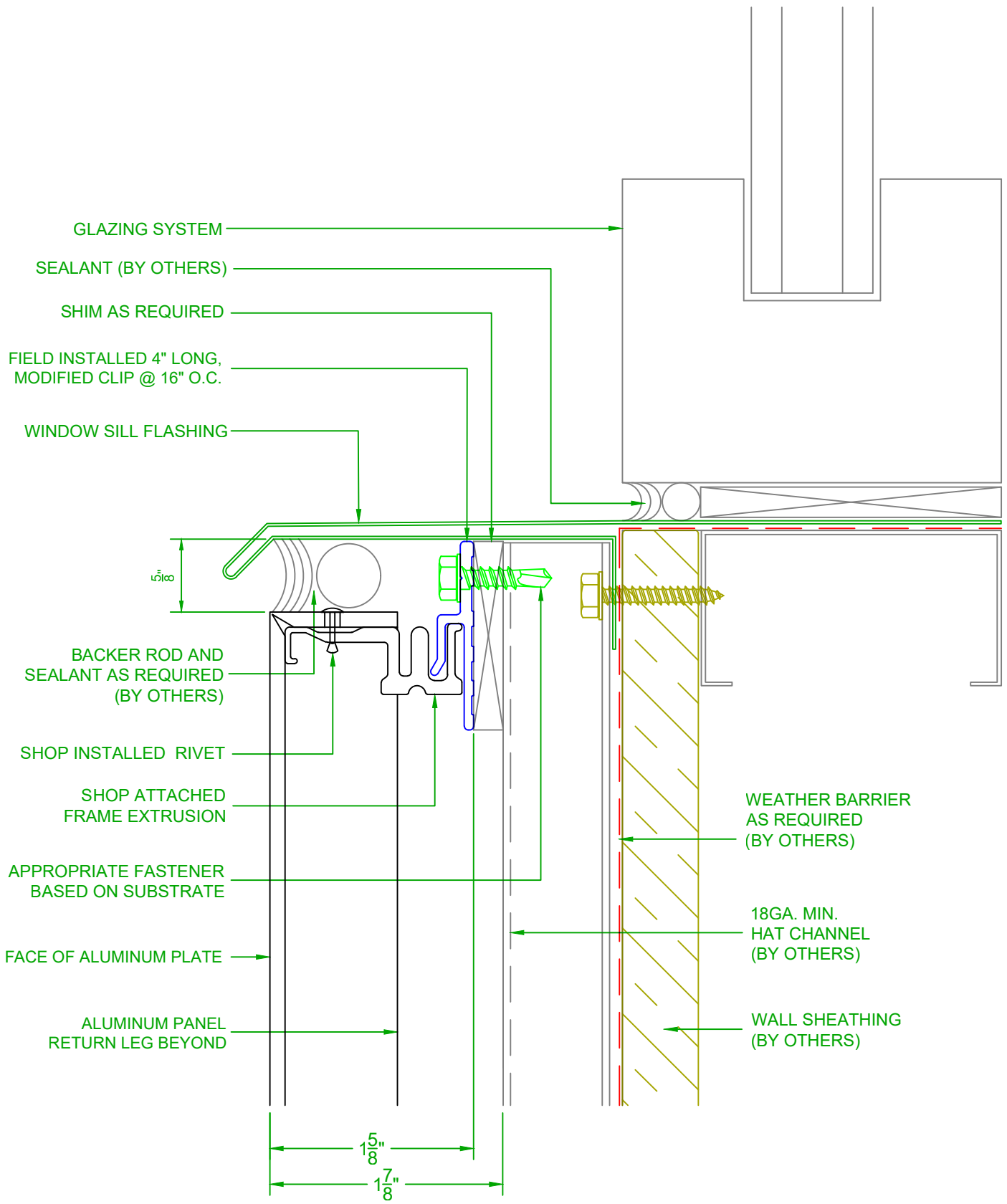


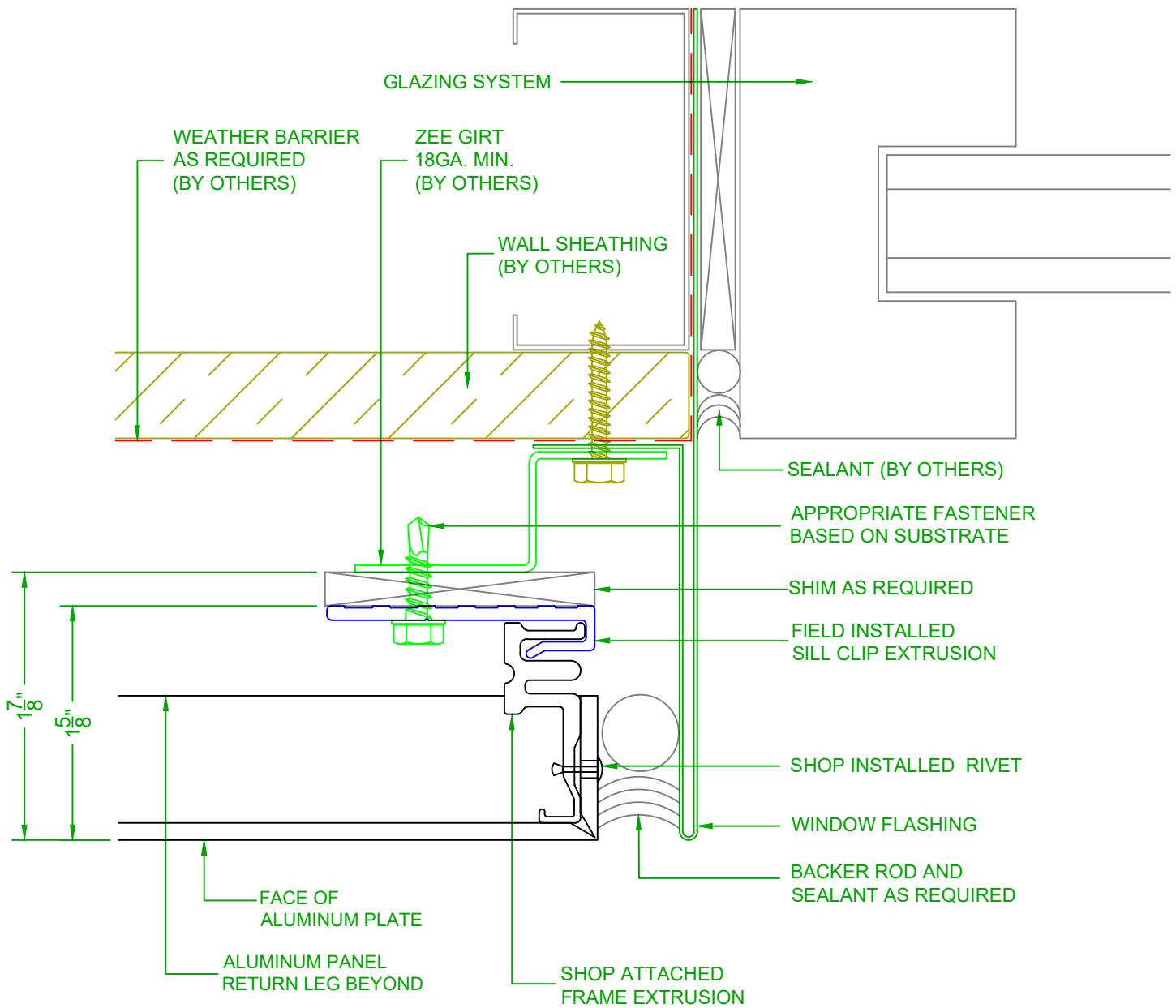


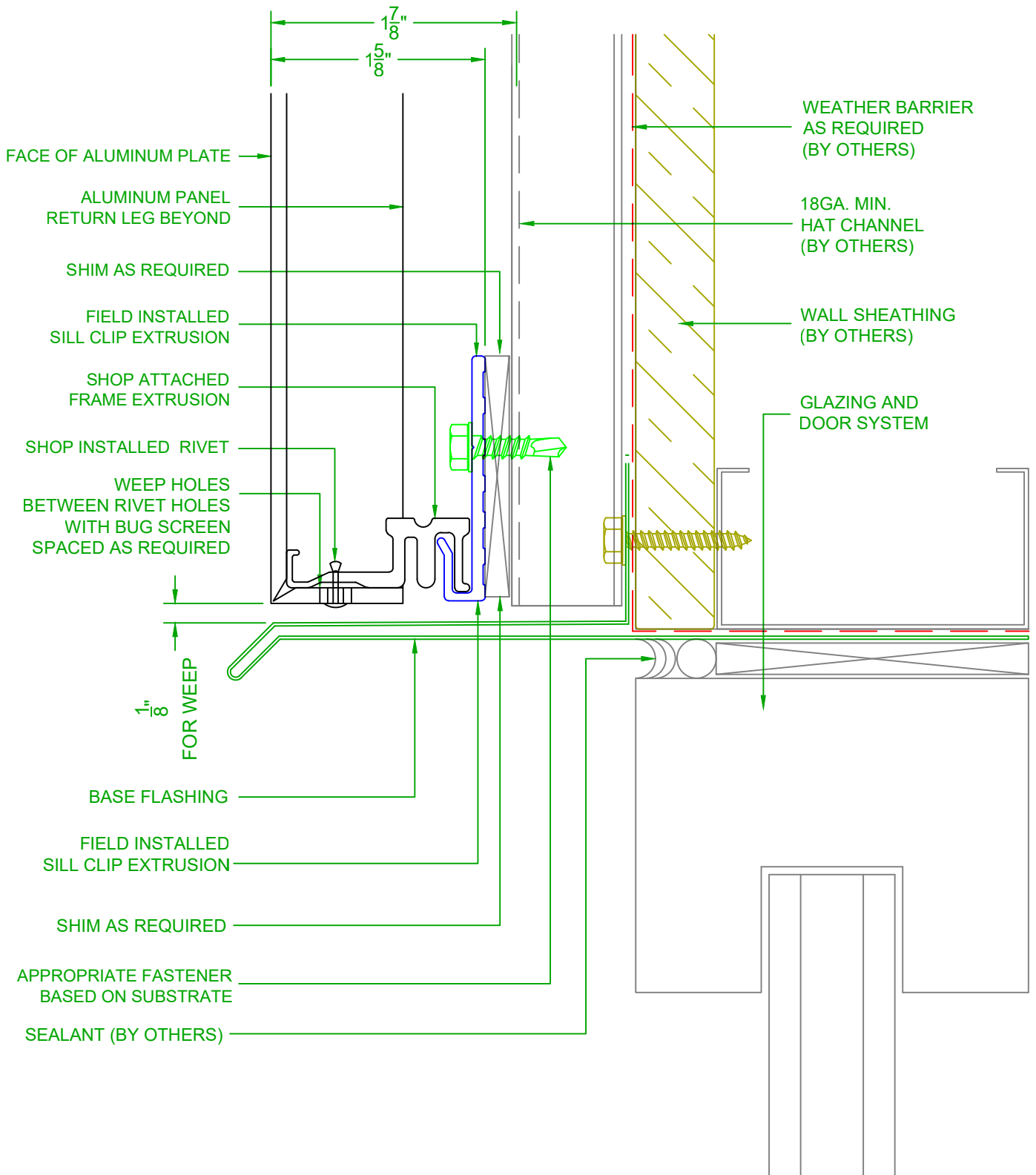


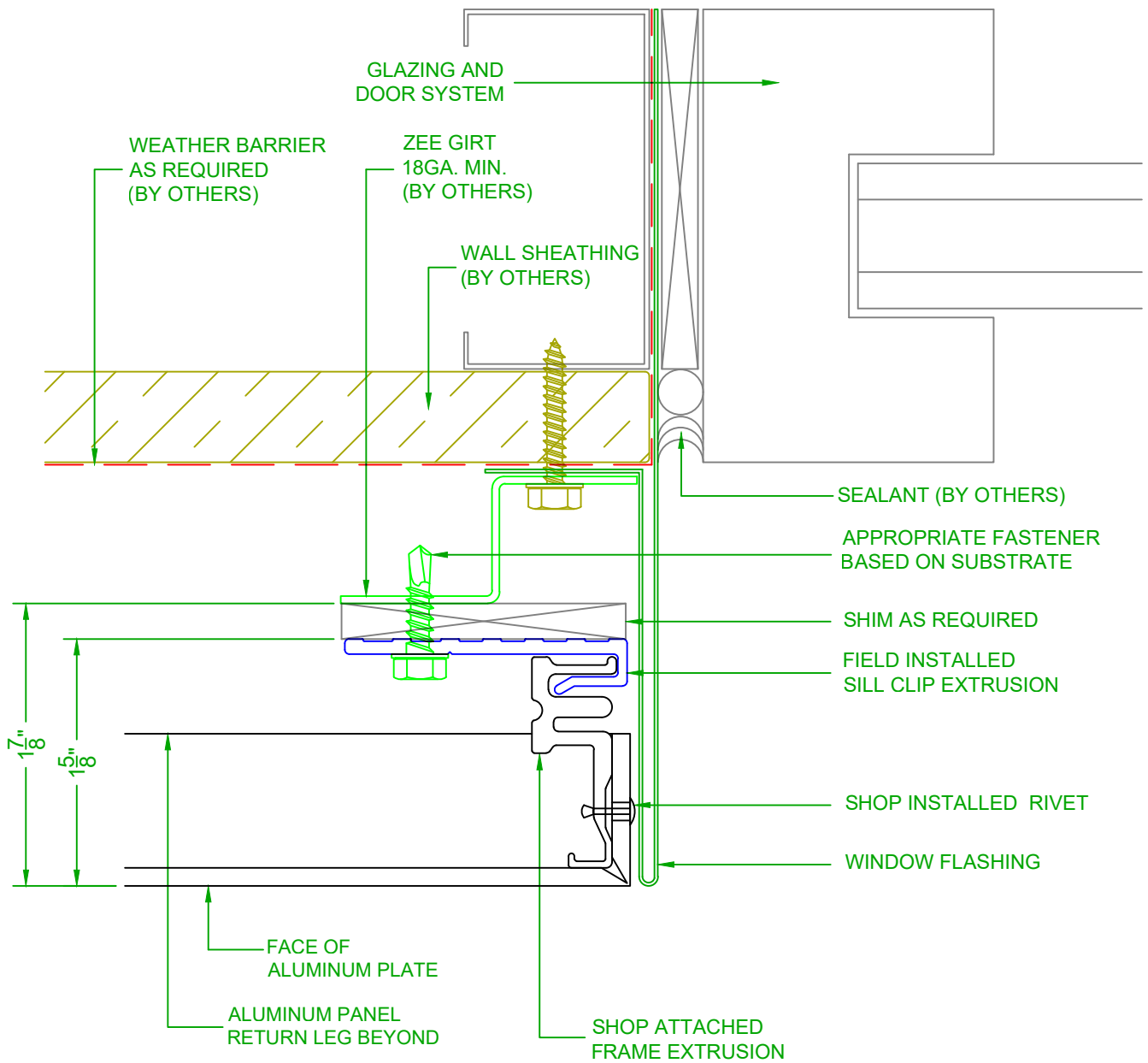




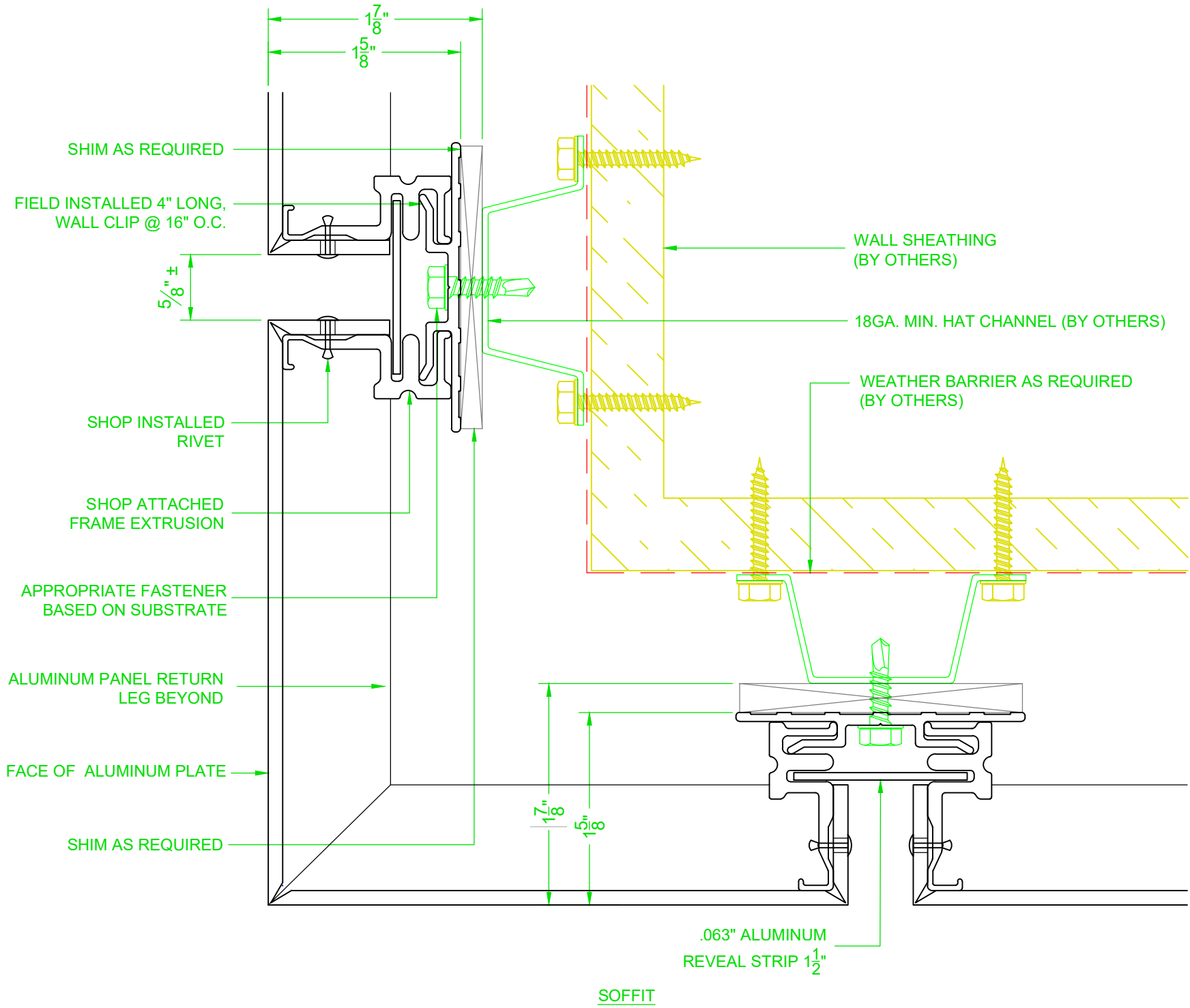








FASCIA



SOFFIT

FASCIA / SOFFIT DETAIL

SYSTEM = ALUMINUM AP-400

1/26/24

SCALE: NTS

2529 W. Jackson St.
 Phoenix, AZ 85298
 PHONE: (602) 275-1676
 FAX: (602) 275-1739

Lumaplate

Lumabuilt

TYP. ACM COPING CAP DETAIL

SYSTEM = ALUMINUM AP-400

1/26/24

SCALE: NTS

2529 W. Jackson St.
Phoenix, AZ 85298

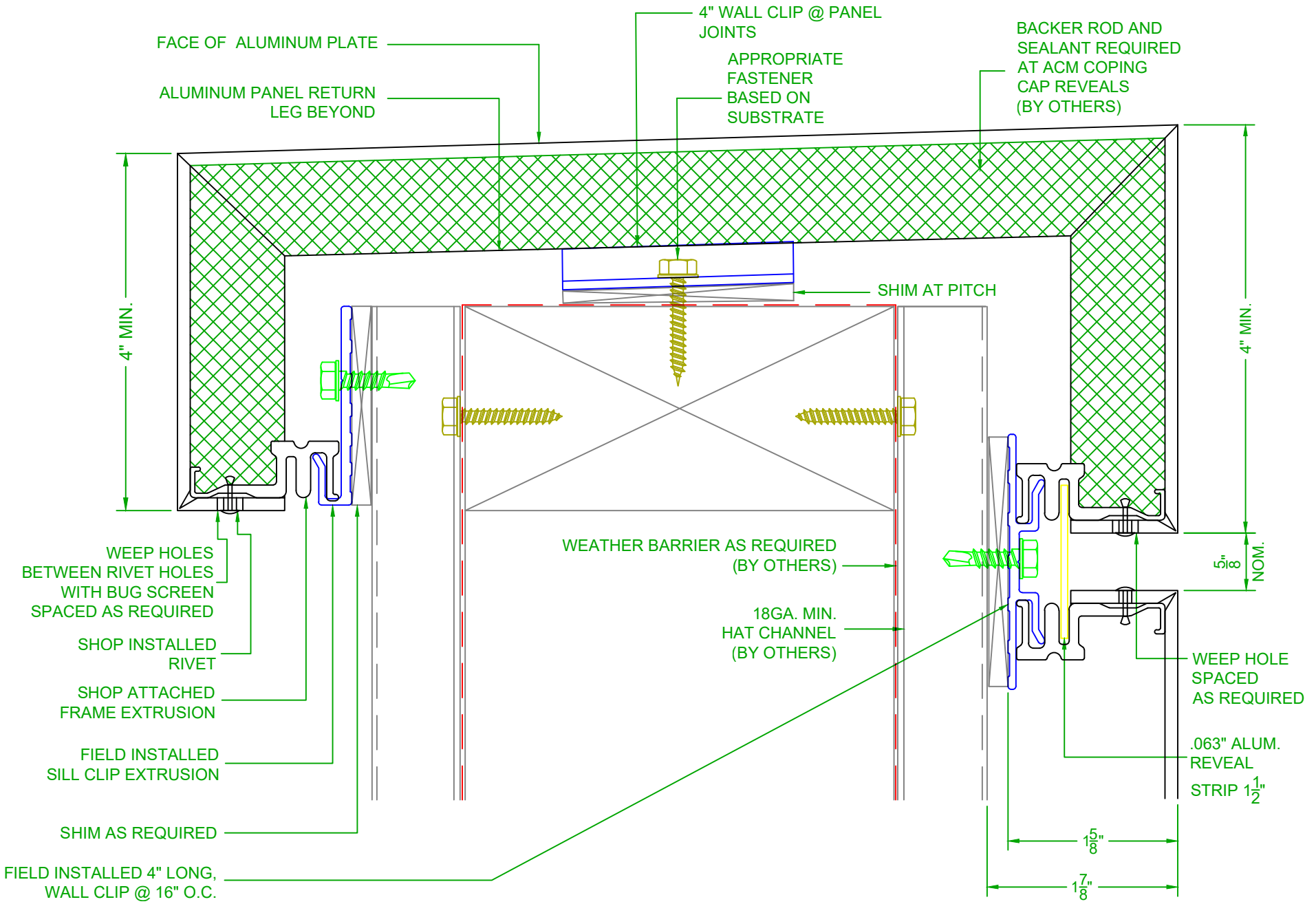
PHONE: (602) 275-1676

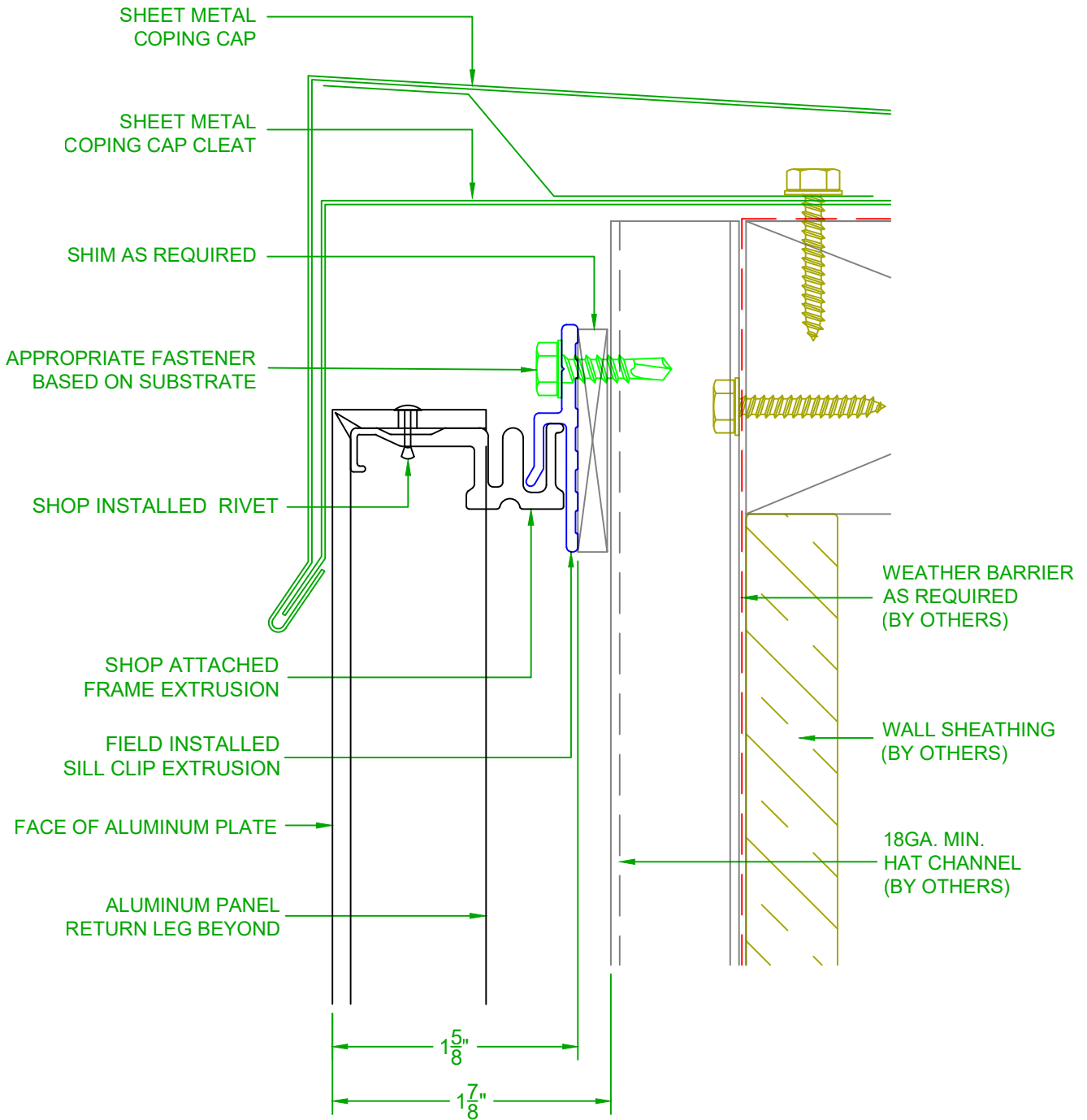
FAX: (602) 275-1739

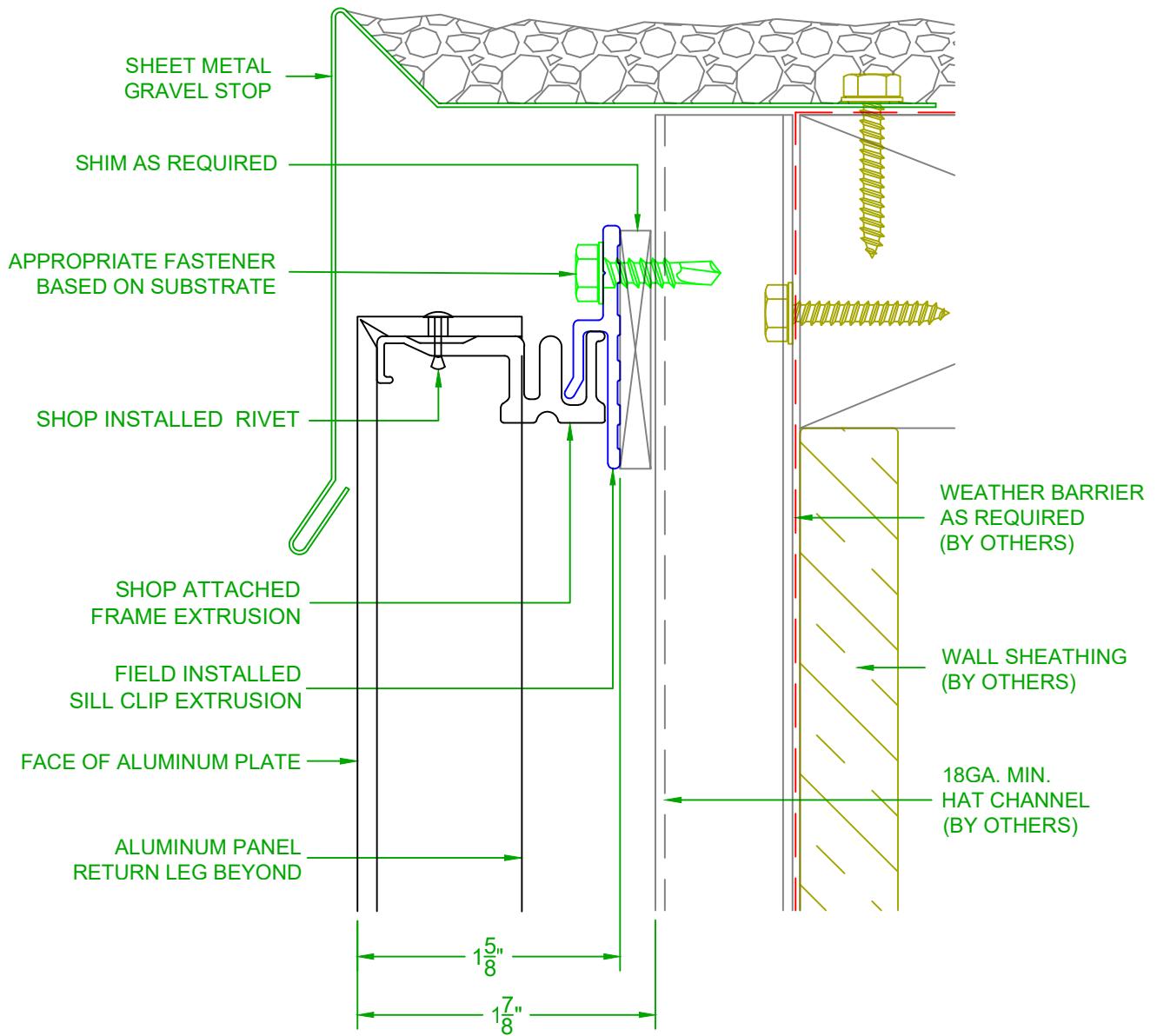
Lumaplate

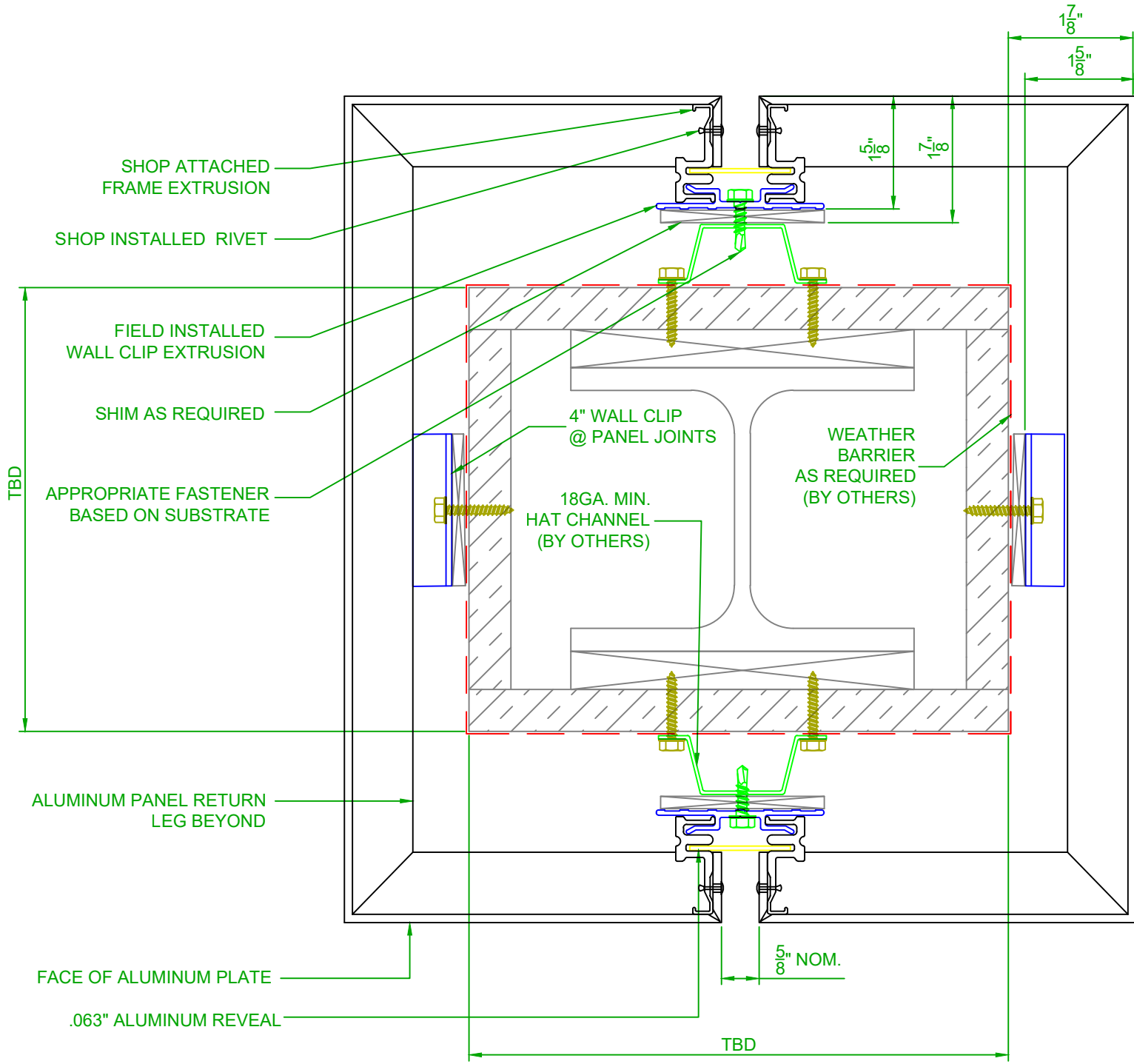


Lumabuilt









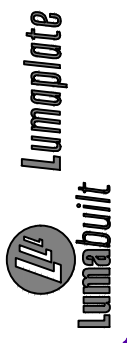
COLUMN COVER DETAIL

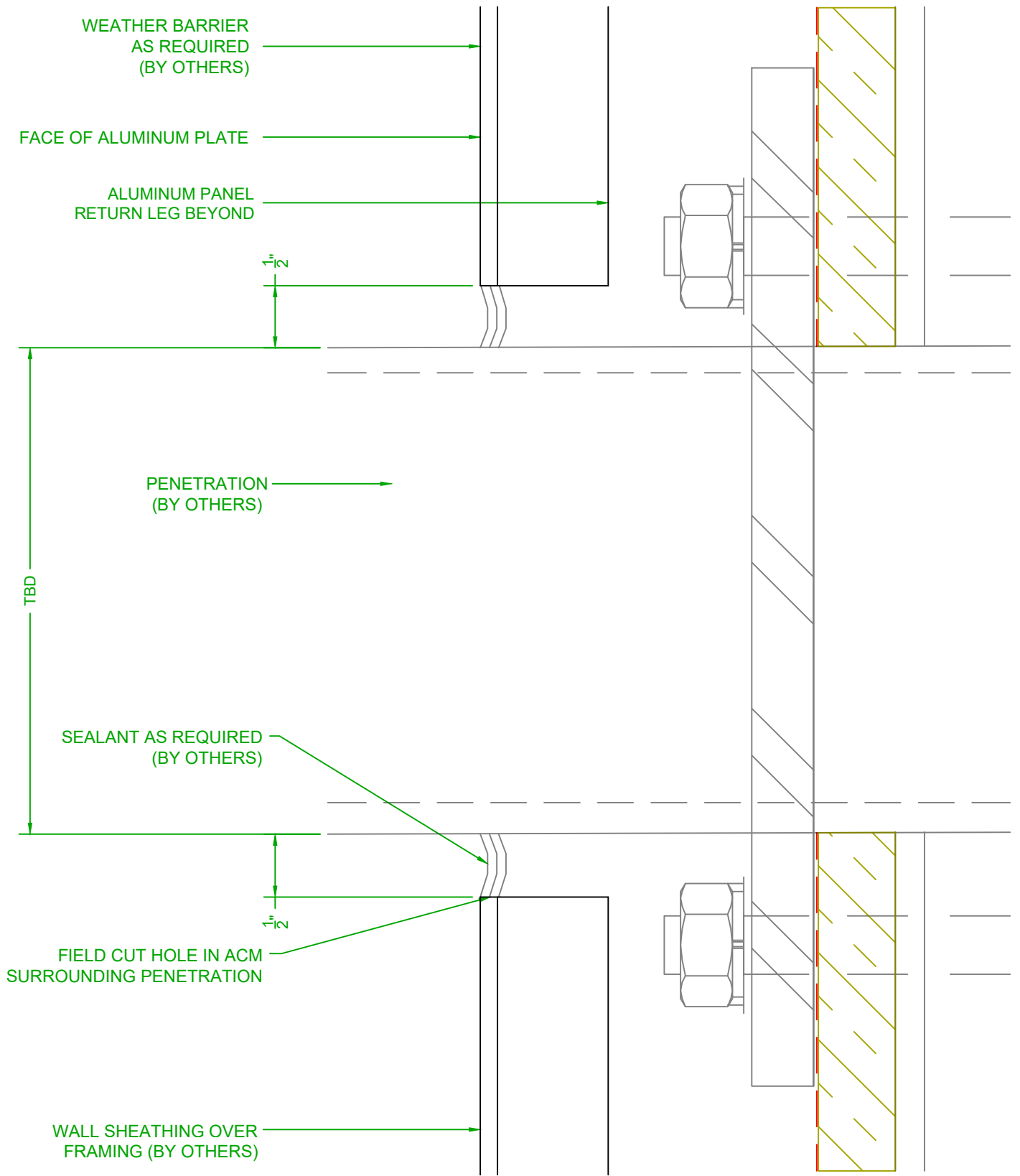
SYSTEM = ALUMINUM AP-400

1/26/24

SCALE: NTS

2529 W. Jackson St.
Phoenix, AZ 85298
PHONE: (602) 275-1676
FAX: (602) 275-1739





LIGHT STRIP DETAIL

SYSTEM = ALUMINUM AP-400

1/26/24

SCALE: NTS

2529 W. Jackson St.
Phoenix, AZ 85298
PHONE: (602) 275-1676
FAX: (602) 275-1739

Lumaplate

Lumabuilt

